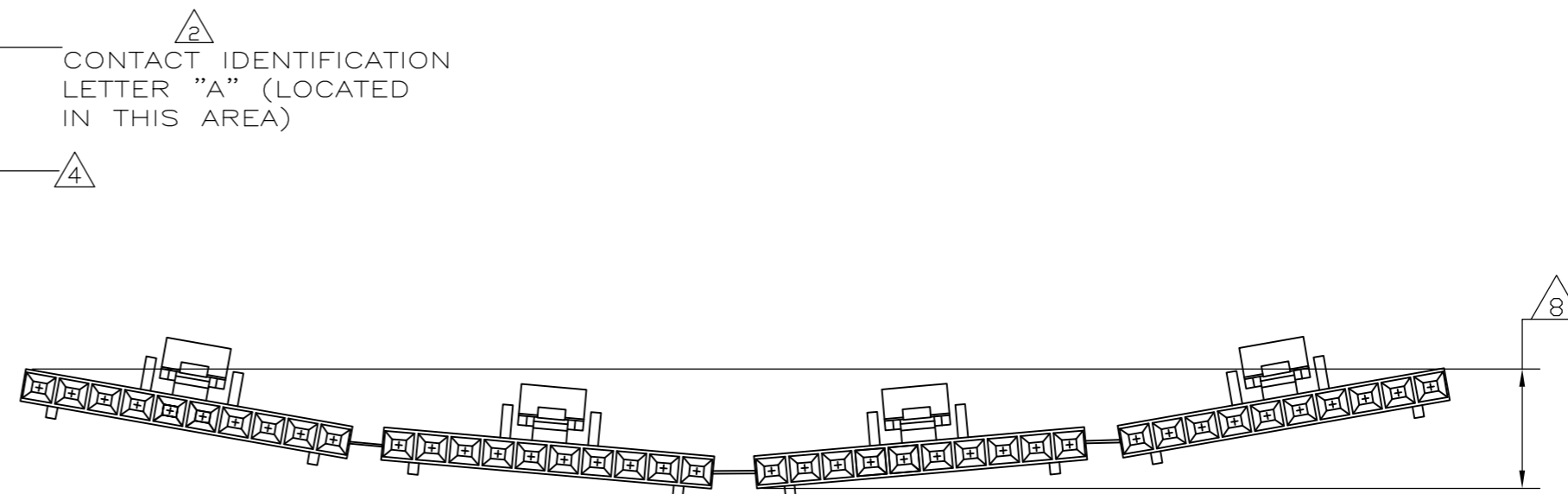
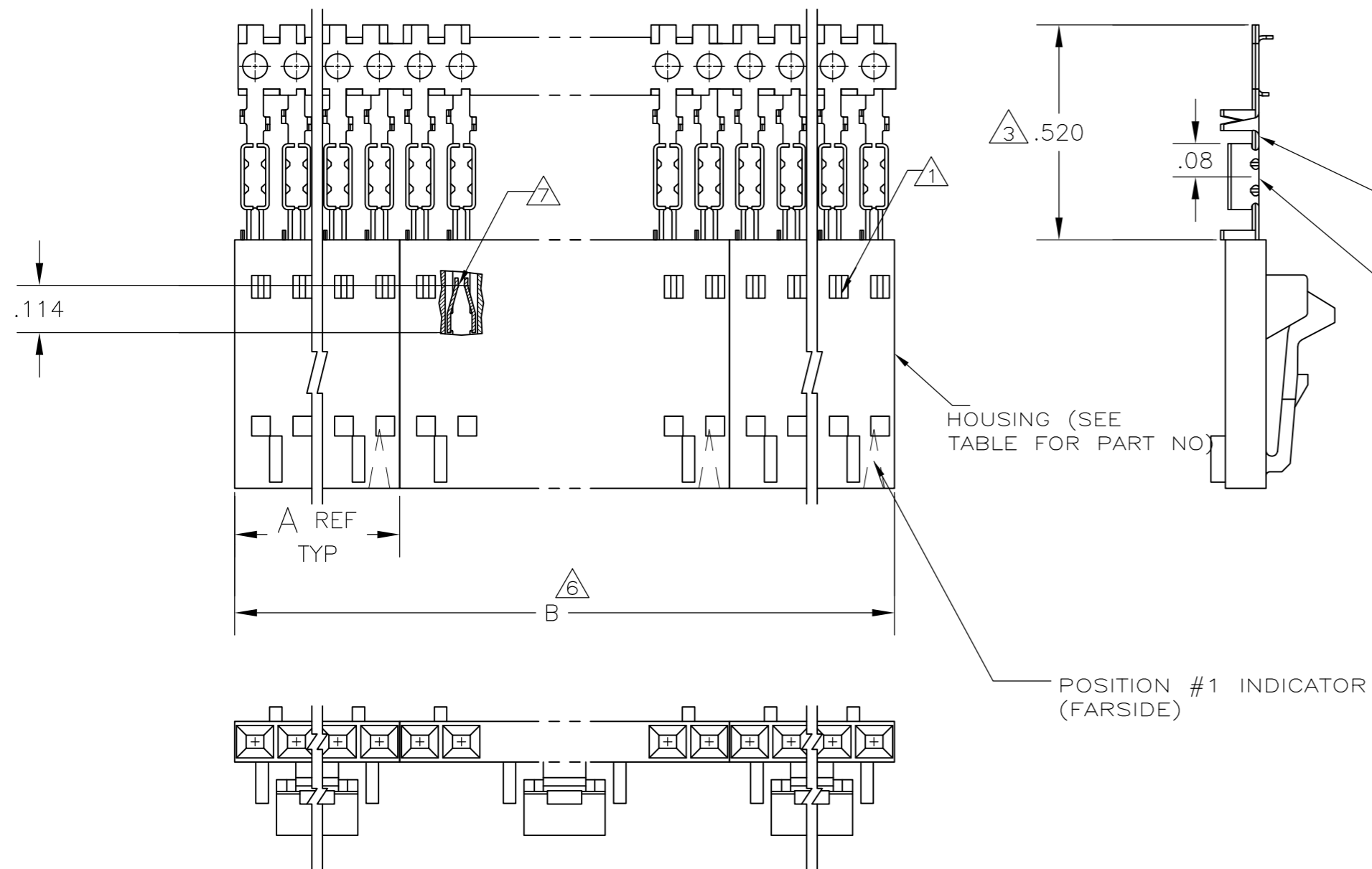


THIS DRAWING IS UNPUBLISHED. RELEASED FOR PUBLICATION. ALL RIGHTS RESERVED.

LOC	DIST	REVISIONS					
AD	00	P	LTR	DESCRIPTION	DATE	DWN	APVD
		M2		REVISED PER ECO-11-004820	11MAR11	RK	HMR



EXAMPLE: STRIP ASSEMBLY SCALE 2:1

- 1 CONTACTS ARE LATCHED INTO THE PRELOAD WINDOWS.
- 2 USE WITH #26-#30 AWG WIRE SIZE, .054/.030 INSULATION DIAMETER, .015 MAXIMUM INSULATION THICKNESS.
- 3 THE DIMENSION APPLIES WITH THE FORWARD STOP IN CONTACT WITH THE HOUSING SURFACE
- 4 POINT OF MEASUREMENT FOR PLATING THICKNESS
- 5. FOR INDIVIDUAL ASSEMBLIES SEE PART NUMBER 103640
- 6 ASSEMBLIES ARE JOINED BY THE CARRIER STRIP. ORDER QUANTITY REFLECTS TOTAL NUMBER OF INDIVIDUAL ASSEMBLIES REQUIRED. SEE TABLE FOR NUMBER OF ASSEMBLIES PER STRIP.
- 7 POINT OF MEASUREMENT FOR PLATING THICKNESS (INSIDE BEAMS)
- 8 MAXIMUM ALLOWABLE BOW OF ASSEMBLY NOT TO EXCEED .055.
- 9 .000015 GOLD IN THE CONTACT AREA. .000050-.000100 BRIGHT TIN-LEAD ON THE TERMINATION AREA, ALL OVER .000050 NICKEL.
- 10 .000015 GOLD IN THE CONTACT AREA. .000050-.000100 BRIGHT TIN ON THE TERMINATION AREA, ALL OVER .000050 NICKEL.
- 11 PRELIMINARY PART - NOT RELEASED FOR PRODUCTION.
- 12 .000015 GOLD IN THE CONTACT AREA. .000050-.000100 MATTE TIN ON THE TERMINATION AREA, ALL OVER .000050 NICKEL.
- 13 OBSOLETE PARTS: OBSOLETE CIS STREAMLINING PER D.RENAUD/D.SINISI

13 OBSOLETE	12	2	2.40	1.198	1-104257-1	12	6-103960-1
13 OBSOLETE	12	2	2.20	1.098	1-104257-0	11	6-103960-0
13 OBSOLETE	12	2	2.00	.998	104257-9	10	5-103960-9
	12	2	1.80	.898	104257-8	9	5-103960-8
	12	2	1.60	.798	104257-7	8	5-103960-7
	12	2	1.40	.698	104257-6	7	5-103960-6
	12	4	2.39	.598	104257-5	6	5-103960-5
	12	4	1.99	.498	104257-4	5	5-103960-4
	12	5	1.99	.398	104257-3	4	5-103960-3
	12	8	2.40	.298	104257-2	3	5-103960-2
	12	10	2.00	.198	104257-1	2	5-103960-1
	11	10	2.00	.198	104257-1	2	5-103960-1
13 OBSOLETE	9	2	2.40	1.198	1-104257-1	12	1-103960-1
	9	2	2.20	1.098	1-104257-0	11	1-103960-0
	9	2	2.00	.998	104257-9	10	103960-9
	9	2	1.80	.898	104257-8	9	103960-8
	9	2	1.60	.798	104257-7	8	103960-7
	9	2	1.40	.698	104257-6	7	103960-6
	9	4	2.39	.598	104257-5	6	103960-5
	9	4	1.99	.498	104257-4	5	103960-4
	9	5	1.99	.398	104257-3	4	103960-3
	9	8	2.40	.298	104257-2	3	103960-2
	9	10	2.00	.198	104257-1	2	103960-1
PLATING	6	B	A	HOUSING PART NUMBER	NO OF POSN	ASSEMBLY PART NUMBER ON STRIP	

THIS DRAWING IS A CONTROLLED DOCUMENT.

DWN L A MAYER 11-4-86
CHK P de JONG 11-4-86
APVD P de JONG 11-4-86

TE Connectivity

RCPT ASSY, AMPMODU MTE, SINGLE ROW, .100 C/L, LATCHED & POLARIZED FOR NO 26- NO 30 AWG WIRE SIZE, STRIP FORM

108-25034
114-25026

SIZE A2 CAGE CODE 00779 DRAWING NO C=103960

WEIGHT -

CUSTOMER DRAWING SCALE 3:1 SHEET 1 of 1 REV M2

Mouser Electronics

Authorized Distributor

Click to View Pricing, Inventory, Delivery & Lifecycle Information:

[TE Connectivity:](#)

[5-103960-1](#)