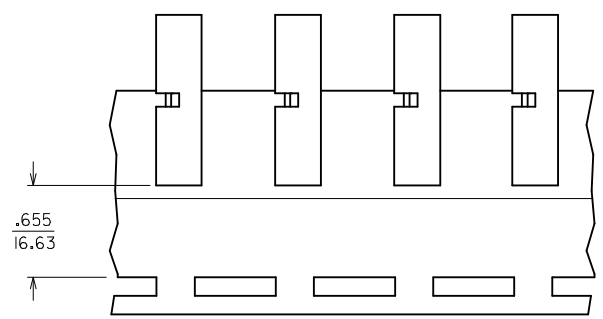
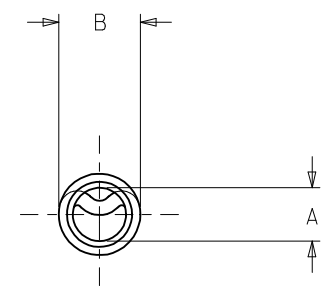
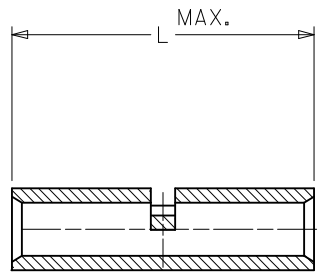


MATERIAL NUMBER	ALTERNATE NUMBER	"L" MAX	"A" MIN.	"B"	PACKAGING
192150009	AS-345	.675 (17.10)	.059 (1.50)	.130 (3.30)	LOOSE PIECE
192150007	AS-332	.605 (15.37)	.059 (1.50)	.130 (3.30)	
192150012	AS-348	.635 (16.13)	.059 (1.50)	.130 (3.30)	
192150011	AS-345T	.675 (17.10)	.059 (1.50)	.130 (3.30)	TAPE MOUNTED
192150248	AS-345US	.675 (17.10)	.059 (1.50)	.130 (3.30)	LOOSE PIECE
192150254	AS-345UST	.675 (17.10)	.059 (1.50)	.130 (3.30)	TAPE MOUNTED

(B)



PARTS ON TAPE



CUSTOMER DRAWING

NOTES:  
 1. MATERIAL: COPPER.  
 2. PLATING: ELECTRO-TIN.  
 3. ALL DIMENSIONS IN INCHES/(MM).

REVISED / REDRAWN EC NO: ETC2005-0116 DRWN: JLOMASTRO 2005/03/03 CHKD: RDEROSS 2005/03/04 APPR: RDEROSS 2005/03/07	DESCRIPTION B	QUALITY SYMBOLS	GENERAL TOLERANCES (UNLESS SPECIFIED)	DIMENSION STYLE	SCALE	DESIGN UNITS	THIRD ANGLE PROJECTION															
		$\nabla=0$ $\sphericalangle=0$	<table border="1"> <thead> <tr> <th></th> <th>mm</th> <th>INCH</th> </tr> </thead> <tbody> <tr> <td>4 PLACES</td> <td>± ---</td> <td>± ---</td> </tr> <tr> <td>3 PLACES</td> <td>± ---</td> <td>± .005</td> </tr> <tr> <td>2 PLACES</td> <td>± 0.13</td> <td>± .01</td> </tr> <tr> <td>1 PLACE</td> <td>± 0.25</td> <td>± ---</td> </tr> </tbody> </table>		mm	INCH	4 PLACES	± ---	± ---	3 PLACES	± ---	± .005	2 PLACES	± 0.13	± .01	1 PLACE	± 0.25	± ---	IN/MM	INCH	INCH	
			mm	INCH																		
		4 PLACES	± ---	± ---																		
3 PLACES	± ---	± .005																				
2 PLACES	± 0.13	± .01																				
1 PLACE	± 0.25	± ---																				
	ANGULAR ±1/2°	DRAWN BY JLOMASTRO	DATE 05/01/07	TITLE BUTT CONNECTOR SEAMLESS 22-18 AWG WIRE SIZE																		
	DRAFT WHERE APPLICABLE MUST REMAIN WITHIN DIMENSIONS	CHECKED BY RDEROSS	DATE 05/01/07	MATERIAL NO. SEE CHART			MOLEX INCORPORATED DOCUMENT NO. SD-19215-001															

THIS DRAWING CONTAINS INFORMATION THAT IS PROPRIETARY TO MOLEX INCORPORATED AND SHOULD NOT BE USED WITHOUT WRITTEN PERMISSION