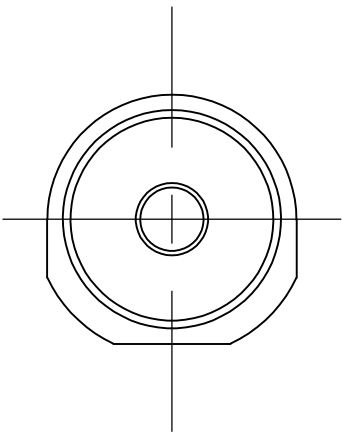
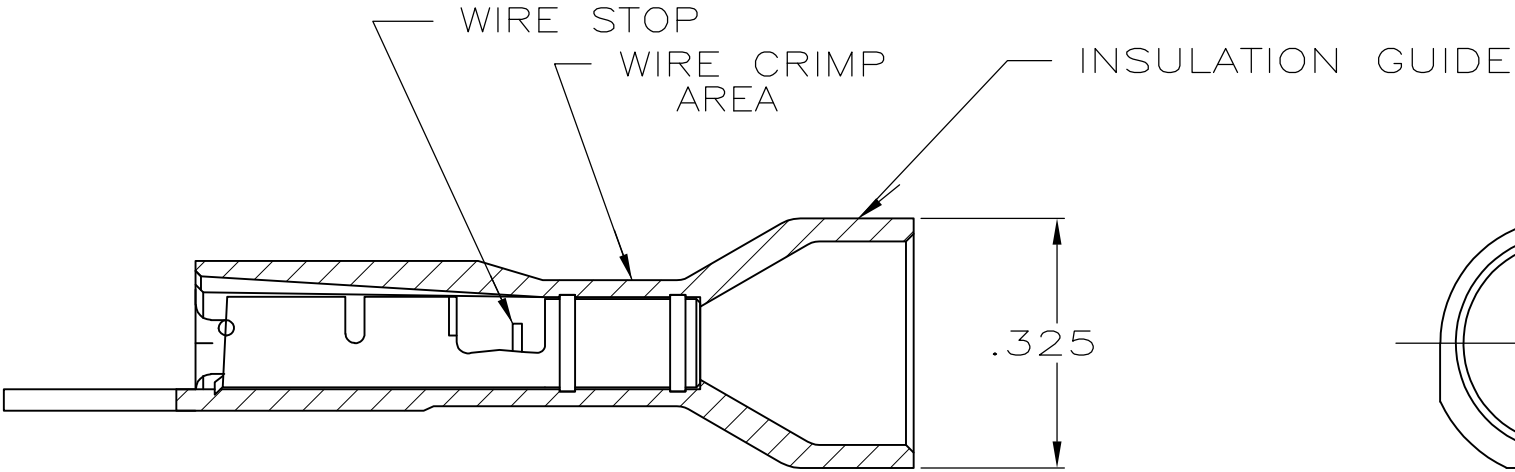
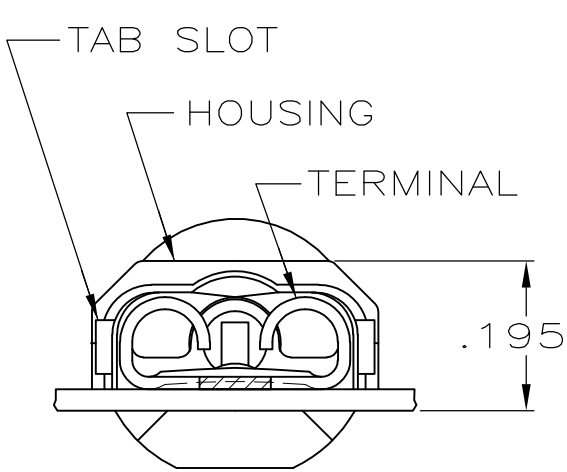

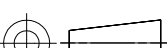


- 1 MATES WITH .032±.001x.250 TAB
- 2 WIRE STRIP LENGTH .281
- 3 INSULATION SIZE .260 MAX DIA
- 4 CONTINUOUS STRIP ON REELS
- 5 DIMENSION DOES NOT INCLUDE TRIM BURR
- 6 .015 MAX CARRIER TRIM BURR PER SIDE IS ALLOWABLE IN THE SHADED AREA
- 7 PRELIMINARY - NOT FOR PRODUCTION



| | | |
|-----------|--|------------|
| STANDARD | HOUSING:NYLON,COLOR-BLACK RECEPTACLE: BRASS,TIN | 9-520140-2 |
| BULK | HOUSING:NYLON,COLOR-BLUE TRANSLUCENT RECEPTACLE: BRASS,TIN | 5-520140-2 |
| STANDARD | HOUSING:NYLON,COLOR-BLUE TRANSLUCENT RECEPTACLE:#3 HARD PH BRONZE,TIN | 3-520140-4 |
| STANDARD | HOUSING:NYLON,COLOR-BLUE TRANSLUCENT RECEPTACLE: BRASS,TIN | 3-520140-2 |
| PACKAGING | MATERIAL & FINISH | PART NO. |

| | | | | | | |
|---|---------------------|------------------------------|---|--------------------|------------------------|--------------------|
| THIS DRAWING IS A CONTROLLED DOCUMENT. | | DWN JR RUTH 21NOV00 |  TE Connectivity | | | |
| | | CHK MS FEHER 21NOV00 | | | | |
| DIMENSIONS: INCHES | | APVO J HUMMEL 21NOV00 | NAME RECEPTACLE ASSY, ULTRA-FAST, .250 SERIES, 16-14 AWG | | | |
|  | | PRODUCT SPEC 108-2043 | | | | |
| | | APPLICATION SPEC 114-2123 | SIZE A2 | CAGE CODE 00779 | DRAWING NO C=520140 | RESTRICTED TO — |
| MATERIAL SEE TABLE | FINISH SEE TABLE | WEIGHT — | | | | |
| | | CUSTOMER DRAWING | SCALE 4:1 | | SHEET 1 of 1 | REV R |

Mouser Electronics

Authorized Distributor

Click to View Pricing, Inventory, Delivery & Lifecycle Information:

[TE Connectivity:](#)

[3-520140-2](#) [3-520140-2 \(Cut Strip\)](#) [3-520140-2 \(Mouser Reel\)](#)