

FIT106-2

Description:

The FIT106-2 toroidal inductor is specifically designed to minimize transients. It stores energy and therefore, conditions the output signal by leveling the current waveform providing a more stable current supply. Generally used in high frequency circuits, its standard design provides an economical solution in differential mode applications or as an output inductor.

Electrical Specifications (@25C):

Min. Inductance (μ H)		Rated	Max
No Bias	At Bias	DC Amps	DCR (m Ω)
197.0	113.0	4.8	106.0

Note: No Bias inductance measured at .25V, 10KHZ.

Dimensions:

A	B	C	D	E	F	G
1.30	.725	1.40	.500	.724	.125	.029 \pm .003

Units: In inches

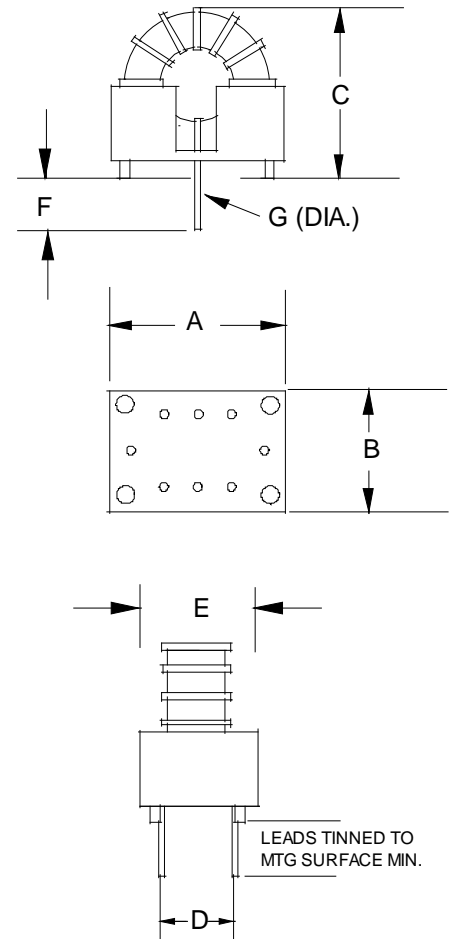
Weight: .090 lbs.

Technical Notes:

1. Nominal inductance values are typically 10% higher than minimal rating.
2. Biased inductance measured at rated DC amps.
3. Operation at rated current yields approximately 40°C temperature rise over 20°C ambient.

RoHS Compliance: As of manufacturing date February 2005, all standard products meet the requirements of 2011/65/EU, known as the RoHS initiative.

*Upon printing, this document is considered "uncontrolled". Please contact Triad Magnetics website for the most current version. For soldering and washing information please see <http://www.triadmagnetics.com/faq.html>



Mouser Electronics

Authorized Distributor

Click to View Pricing, Inventory, Delivery & Lifecycle Information:

[Triad Magnetics:](#)

[FIT106-2](#)