

4

3

2

1

PART NUMBER	MS NUMBER	SIZE REF	Ø A	Ø B	C	COLOR CODE	TYPE I	TYPE II
10-405996-22	MS27488-22	23/22	.040±.005	.063±.005	.469±.031	BLACK	I	
-20	MS27488-20	20	.060 ^{+.005} _{-.010}	.090	.564±.020	RED	I	
-16	MS27488-16	16	.083±.010	.133	.564±.020	BLUE	I	
-12	MS27488-12	12	.121±.010	.171	.564±.020	YELLOW	I	
-8	MS27488-8	8	.185±.010	.315	.470±.010	RED	I	
-4	MS27488-4	4	.310±.010	.415	.470±.010	BLUE	I	
-0	MS27488-0	0	.440±.010	.605	1.000±.010	YELLOW	I	
-221	MS27488-22-1	23/22	.041 ^{+.004} _{-.003}	.062±.004	.771±.025	BLACK		II
-201	MS27488-20-1	20	.053±.005	.085±.005	.780	RED		II
-161	MS27488-16-1	16	.074±.005	.125±.005	1.447	BLUE		II
-121	MS27488-12-1	12	.120±.005	.165±.005	1.416	YELLOW		II
-81	MS27488-8-1	8	.170±.005	.310±.005	1.164	RED		II
-41	MS27488-4-1	4	.278±.005	.409±.005	1.164	BLUE		II
-01	MS27488-0-1	0	.423 ^{+.008} _{-.007}	.601±.005	1.046	YELLOW		II
-222	MS27488-22-2	23/22	.041 ^{+.004} _{-.003}	.062±.004	.469±.031	BLACK		II
-202	MS27488-20-2	20	.053±.005	.085±.005	.780±.025	RED		II
-162	MS27488-16-2	16	.074±.005	.125±.005	.847	GREEN		II
-122	MS27488-12-2	12	.120±.005	.165±.005	.816	ORANGE		II
-163	MS27488-16-3	16	.074±.005	.125±.005	1.447	BLUE		II
-123	MS27488-12-3	12	.120±.005	.165±.005	1.416	YELLOW		II
-83	MS27488-8-3	8	.170±.005	.310±.005	1.164	RED		II
-43	MS27488-4-3	4	.278±.005	.409±.005	1.164	BLUE		II
-03	MS27488-0-3	0	.423 ^{+.008} _{-.007}	.601±.005	1.046	YELLOW		II

5. PARTS MUST BE CAPABLE OF WITHSTANDING A 90° BEND WITH NO EVIDENCE OF CRACKING.

4. INSULATION RESISTANCE SHALL BE 100 MEGOHMS MINIMUM AT 500 VDC ±2% USING FLAT PROBES ON OPPOSITE FLAT ENDS OF THE SEALING PLUG.

3. MATERIAL: FEP (ASTM-D2116)
PFA (ASTM-D3307) OR
PTFE (ASTM-D1710, OR PPSU (ASTM-D6394)
RESIN. SURFACE FINISH TO BE 32%.

2. INDICATED DIAMETER MUST BE FREE OF FLASH OR SURFACE IMPERFECTIONS.

1. SPECIFIED GENERAL TOLERANCES:
CORNERS .000-.010

NOTES:

⊕

Ø.005

THE USE OF THIS DOCUMENT IS UNLIMITED. HOWEVER, DOCUMENTS REFERENCED HEREON MAY CONTAIN LIMITED RIGHTS DATA.

COMPANY ID: 9
INTERNAL: N
DATE CODE: N

CODED/MS/CUST: N
LOT NO: N
SEE DRAW: N

N/A
N/A

STAMPING DATA

NEXT ASSEMBLY

UNLESS OTHERWISE SPECIFIED

MATERIAL SPEC.

SEE NOTE 3

PROCESS SPEC.

N/A

LINEAR DIMENSIONS ARE IN INCHES

TOLERANCES:
.XXXX = ±.0005
.XXX = ±.010
.XX = ±.03
.X = ±.1
ANGLES = ±2°

OTHER STANDARDS PER 9-3800 AND DOD-D-1000
THIRD ANGLE PROJECTION

POS

QTY

PART NUMBER

DESCRIPTION

NOTE

APPROVALS

DATE

PREPARED D. ALGER 07-Nov-01

CHECKED D.FREAR 2-5-02

MATERIAL AL DAVIS 2-4-02

APPROVED D.FREAR 1-31-02

APPROVED E.SHEPLER 1-31-02

PRO/ENG INFORMATION
10-544762.PART
10-405996-REVK

AMPHENOL CORPORATION

SIDNEY, N.Y. 13838

PLUG, SEALING, GROMMET,
ELECTRICAL CONNECTOR,
TYPE JT-RE

SIZE

C

FSCM NO.

77820

DOCUMENT NO.

10-405996

REV.

K

SCALE: 10.0

REF: 10-101033

SHEET 1 OF 2

REVISIONS

LTR

DESCRIPTION

DATE

APPVD

H

(CL11) REDRAWN SAME SIZE
ADDED P/N'S -XX1 (TYPE II)
ECN: 90777

1/26/2002

D.FREAR
2-4-02

J

(CL 11) CHG BLOCK ONLY CHANGE
TO ALLOW USE OF -XX NUMBERS
ECN: 92705

3-12-03
V.JONES

K

(CL 11) ADDED -222 THRU -03
AND DATA, SEE ECN
ECN: A6037

D.FREAR
8-11-08

TYPE I

SCALE 2

TYPE II

SCALE 5

10-405996

1 OF 2

4

3

2

1

FORMAT: CUP REV: 22-JULY-92

IMAGED / Jan . 30 2009, 12:42 PM

FAMCODES DATA3: * CICS: *

D

D

C

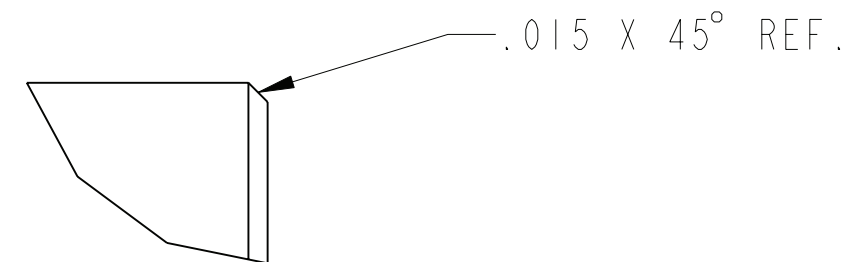
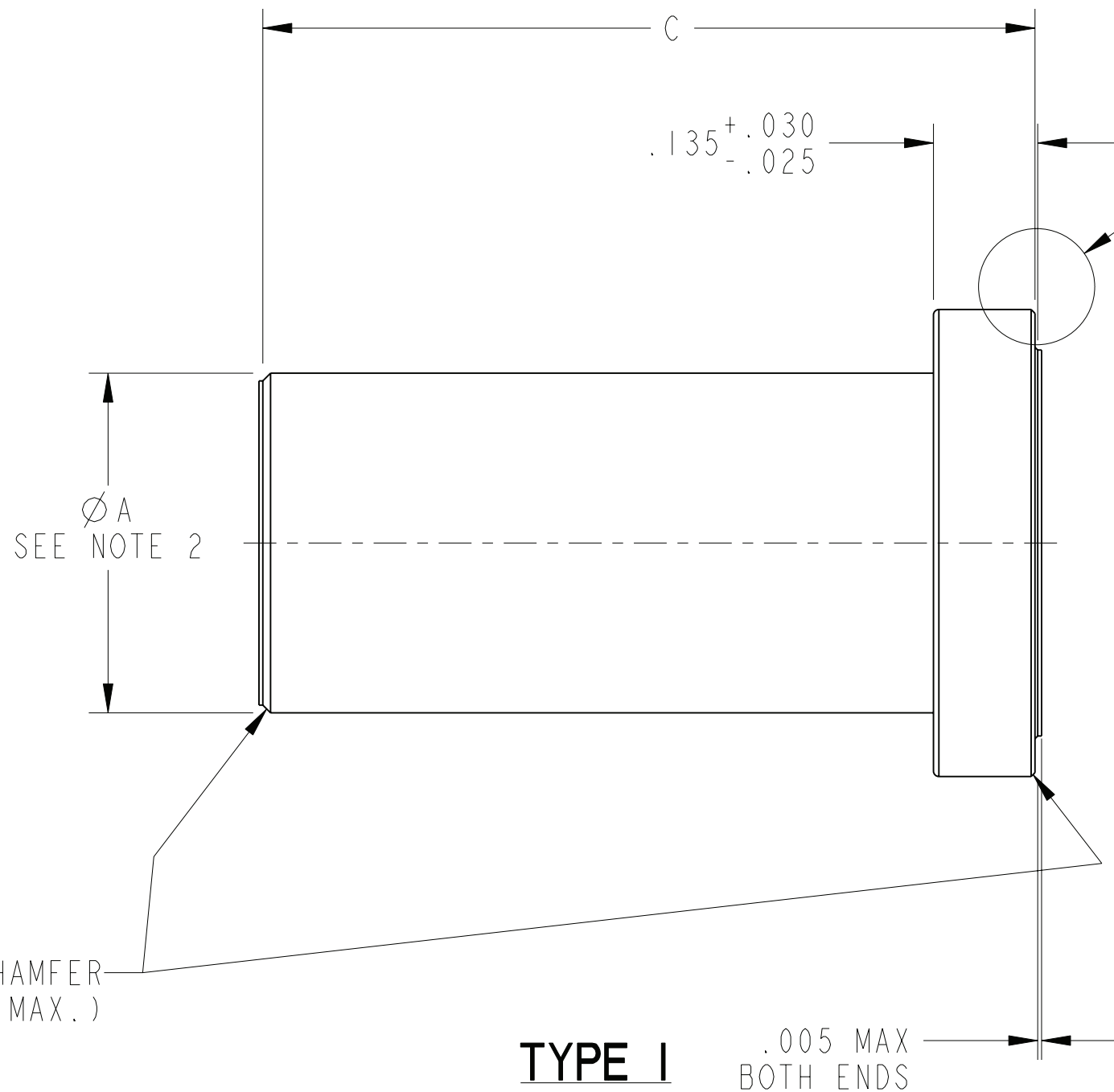
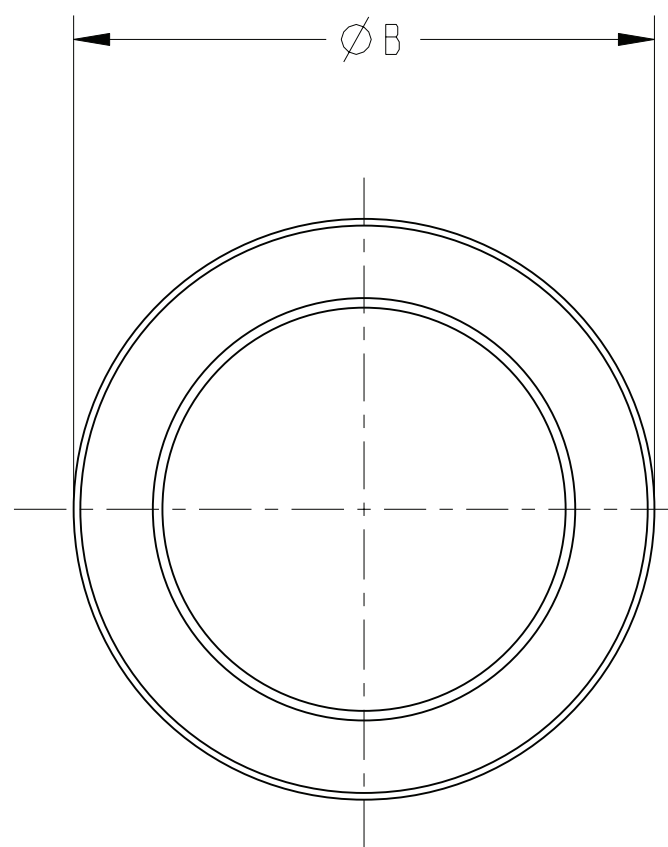
C

B

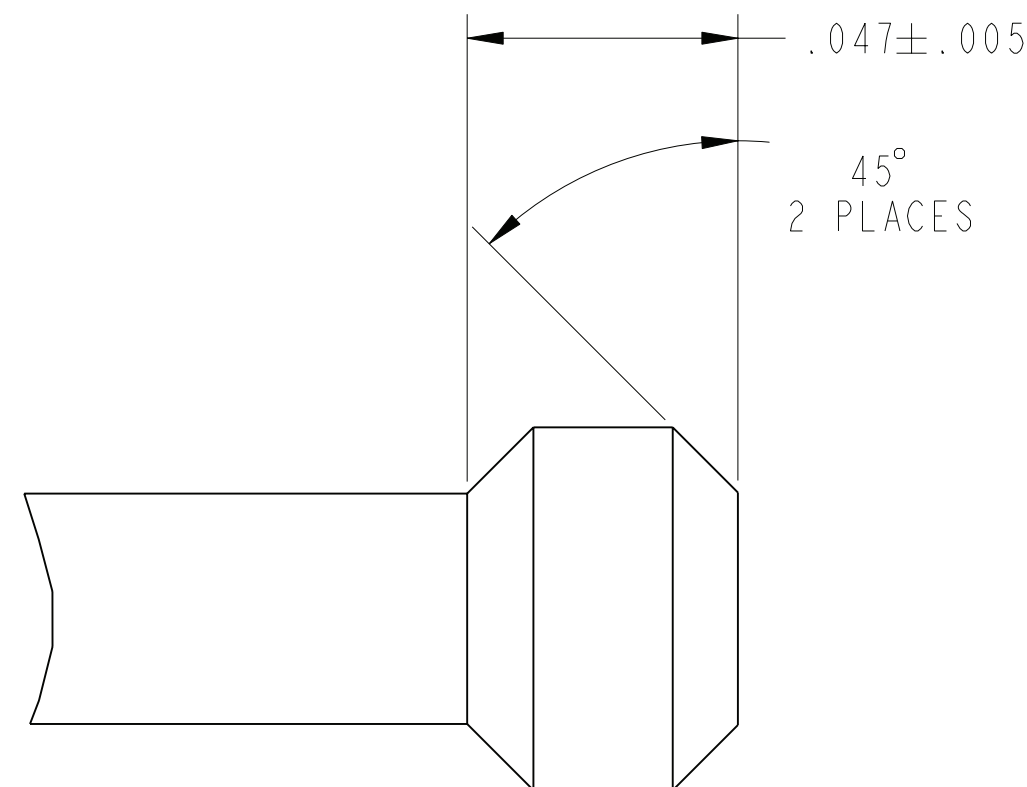
B

A

A

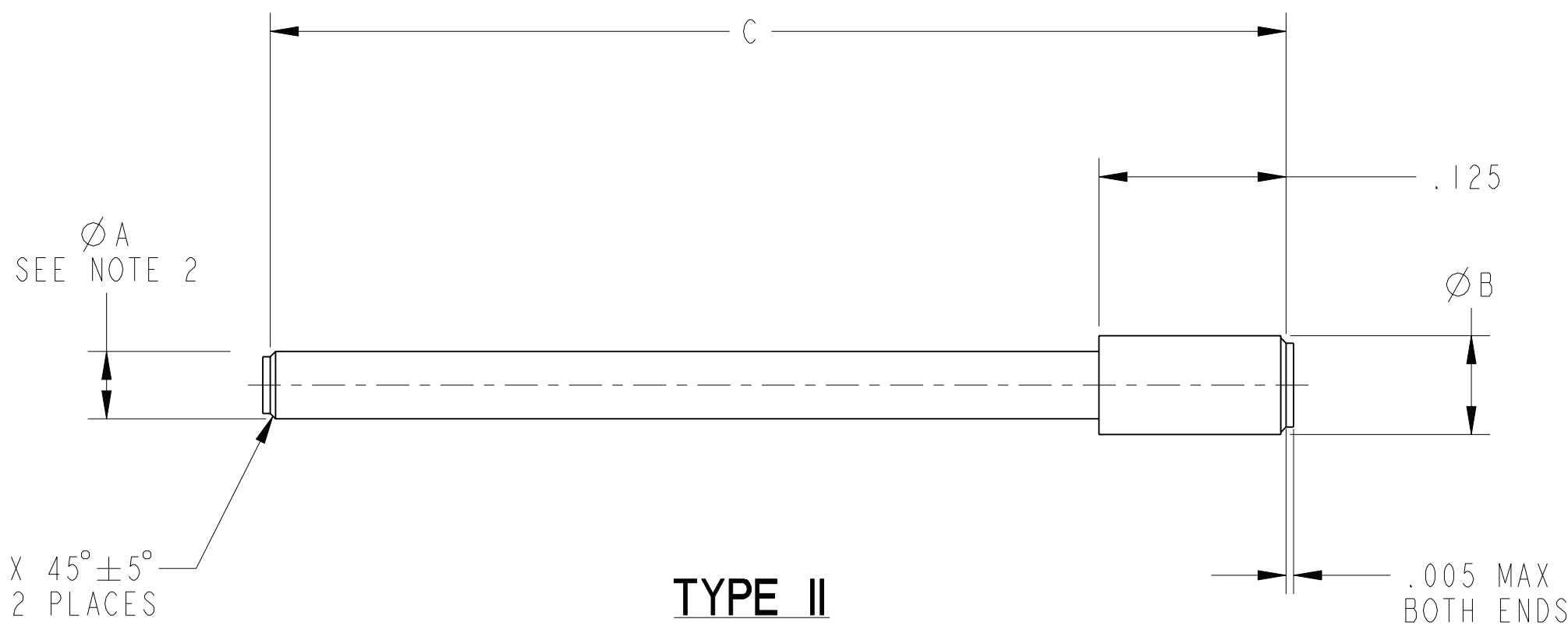


DETAIL D
SCALE 20

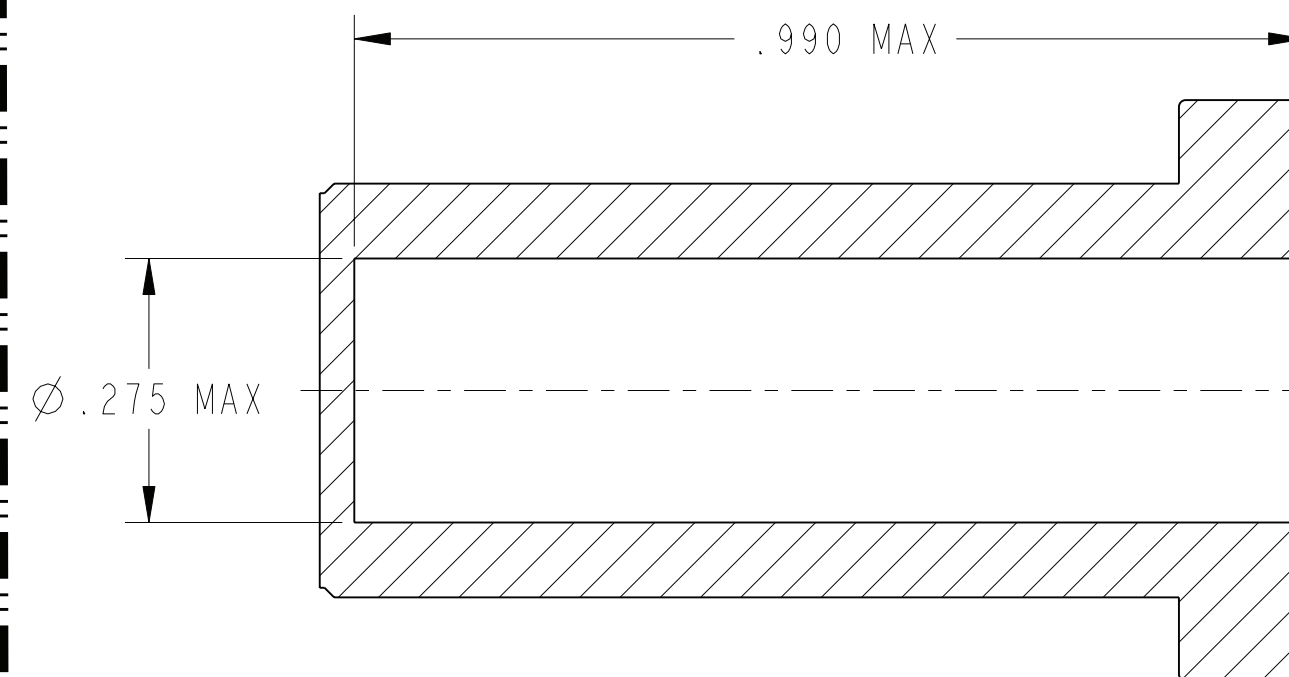


KNOB
SIZE 22 ONLY
TYPE I

TYPE I



TYPE II



OPTIONAL DESIGN FOR 10-405996-03
(MS27488-0-3)

THE USE OF THIS DOCUMENT IS UNLIMITED.
HOWEVER, DOCUMENTS REFERENCED HEREON
MAY CONTAIN LIMITED RIGHTS DATA.

SIZE	FSCM NO.	DOCUMENT NO.	REV.
C	77820	10-405996	K
SCALE: 10.0		REF: 10-101033	SHEET 2 OF 2

SH 2 OF 2

10-405996
DOC NO

A

Mouser Electronics

Authorized Distributor

Click to View Pricing, Inventory, Delivery & Lifecycle Information:

[Amphenol:](#)

[MS27488-20](#)