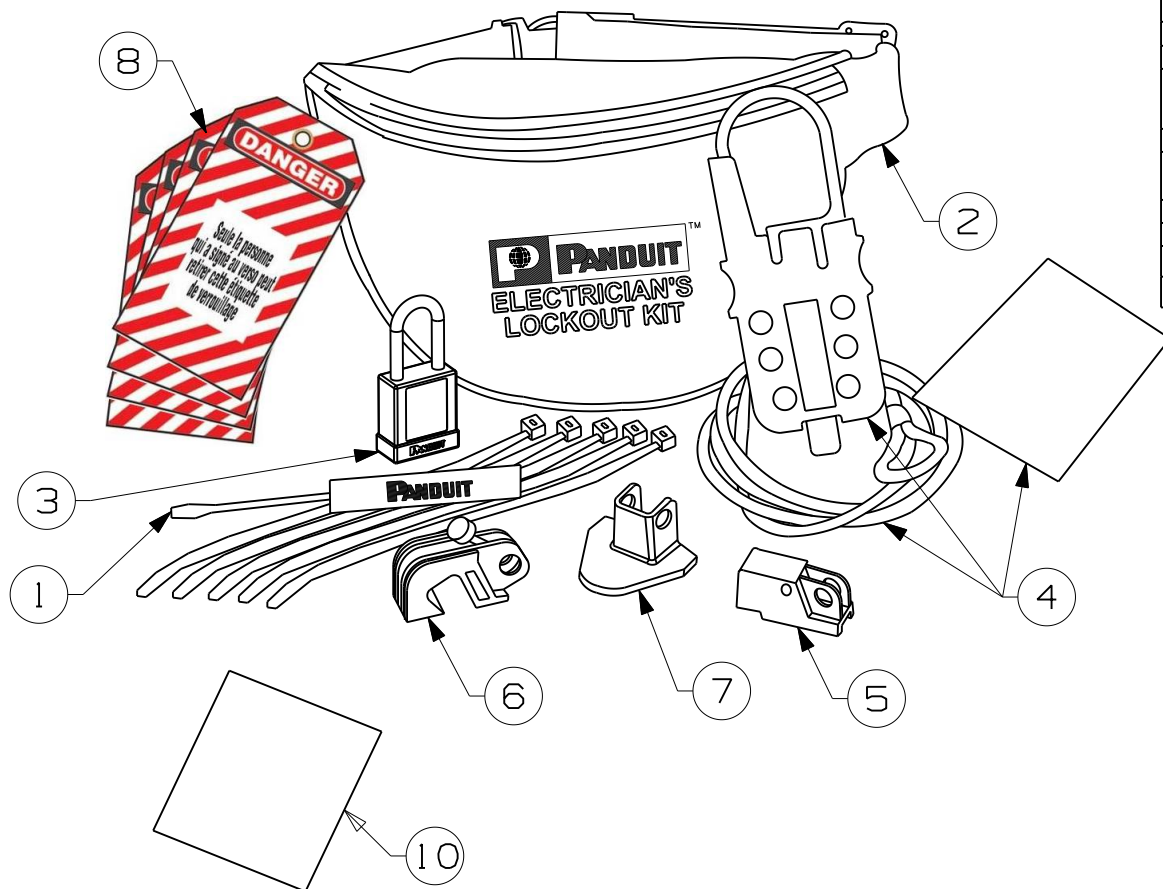



THIS COPY IS PROVIDED ON A RESTRICTED BASIS AND IS NOT TO BE USED IN ANY WAY DETRIMENTAL TO THE INTERESTS OF PANDUIT CORP.



ITEM NO.	QTY. (PCS.)	PART NO.	DESCRIPTION
1	1	GMSDCOM	PANDUIT SCREWDRIVER
2	1	PSL-PK	POUCH
3	1	PSL-BRD	RED PLASTIC BODY PADLOCK
4	1	PSL-MLD	PSL-MLD MULTIPLE LOCKOUT HASP, 6" VINYL COATED CABLE AND INSTRUCTION SHEET
5	1	PSL-WS	WALL SWITCH LOCKOUT DEVICE
6	1	PSL-CBNT	"NO TOOL" UNIVERSAL CIRCUIT BREAKER LOCKOUT DEVICE
7	1	PSL-P	PLUG LOCKOUT DEVICE
8	5	PVT-98-F	SAFETY TAG FRENCH
9	5	PLT2S	NYLON CABLE TIE
10	1	GMPSL-INKT	INSTRUCTION SHEET

										CAD FILENAME/LAYERS		100824BE-DC-C10913/00A	
										PANDUIT CORP. TINLEY PARK, ILLINOIS			
										CUSTOMER DRAWING PSL-PK-EA-F FRENCH ELECTRICIAN LOCKOUT KIT			
										UNLESS OTHERWISE SPECIFIED, DIMENSIONAL TOLERANCES ARE: (.X) ± (.XXX) ± (.XX) ± ANGLES ±		UNLESS OTHERWISE SPECIFIED, ALL DIMENSIONS ARE GIVEN IN INCHES, THIRD ANGLE PROJECTION.	
										DRAWN BY RVU	MAT'L;	SCALE NTS	
0	5/20/11	RVU		DRAWING RELEASE.	6390	R				DATE 5/20/11		DRAWING NO. C10913	DWG A
REV	DATE	BY	CHK	DESCRIPTION	ECN	-	R	CUST	SUP	CHK'D 		SIZE	

Mouser Electronics

Authorized Distributor

Click to View Pricing, Inventory, Delivery & Lifecycle Information:

Panduit:

PSL-PK-EA-F