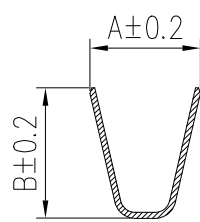
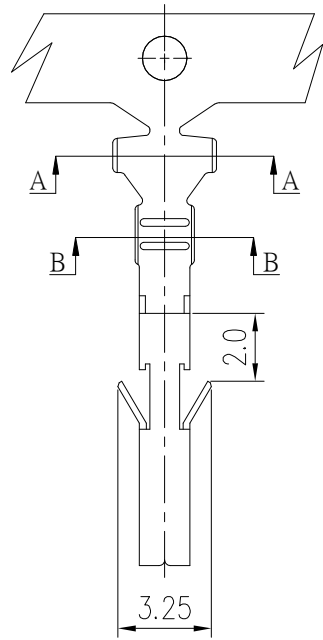
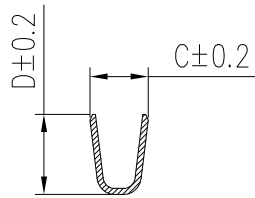


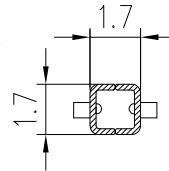
PRODUCT NUMBER  
SEE PART NO. TABLE



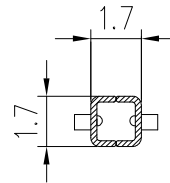
SEC A-A



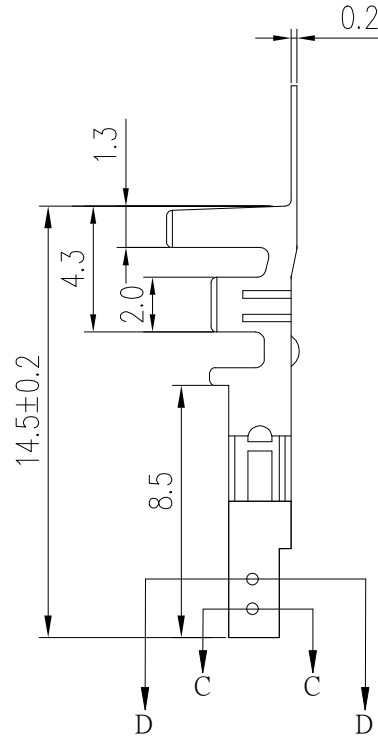
SEC B-B



SEC C-C



SEC D-D



NOTES:

1. MATERIAL: OPTIONAL.
2. THIS TERMINAL IS USED WITH FCI RECEPTACLE HSG 10127815.
3. PRODUCT SPECIFICATION: GS-12-1181.
4. PACKAGE SPECIFICATION: GS-14-2362.
5. PART NUMBER SCHEME:  
10127817- X X X X LF

PLATING TYPE:  
P: PRE-PLATED  
BLANK: POST-PLATED

APPLICABLE AWG:  
1: AWG #16~#22  
2: AWG #24~#28

PLATING CODE:  
1: GOLD FLASH  
2: TIN  
4: 30u" GOLD PLATING

MATERIAL CODE:  
1: PHOSPHORUS BRONZE  
2: BRASS

6. DIMENSIONAL & PART NO. TABLE:

PART NO.	A	B	C	D	APPLICABLE WIRES
10127817-XX2XLF	3.2	3.4	1.8	2.2	#24~#28
10127817-XX1XLF	3.7	4.5	1.8	2.7	#16~#22

mat'l. code		surface ISO 1302 ✓		tolerance ISO 406 ISO 1101		projection		product family	
ltr		ecn no		dr		date		WTB	
A		TAI		2013-11-11		tolerances unless otherwise specified		title	
B		ELX-T-17193		TAI		2014-03-12		RECEPTACLE TERMINAL FOR	
C		ELX-T-18006		TAI		2014-06-19		MINITEK PWR4.2 WIRE CONNECTOR	
D		ELX-N-29382		TONY		2018-02-22		dwg no	
				dr		KENNY TAI		sheet 1 of 1	
				engr		KENNY TAI		size	
				chr		KENNY TAI		10127817	
				appd		PM ZHENG		A3	
								type	
								Product Customer Drawing	
sheet index		revision sheet		D		1			



# Mouser Electronics

Authorized Distributor

Click to View Pricing, Inventory, Delivery & Lifecycle Information:

## [FCI / Amphenol:](#)

[10127817-222LF](#) [10127817-221LF](#) [10127817-121LF](#) [10127817-122LF](#) [10127817-121PLF](#) [10127817-122PLF](#)  
[10127817-211LF](#) [10127817-111PLF](#) [10127817-222PLF](#) [10127817-111LF](#) [10127817-212LF](#) [10127817-221PLF](#)  
[10127817-112LF](#) [10127817-211PLF](#) [10127817-212PLF](#) [10127817-112PLF](#)