

# Board Level Cooling – Narrow Channel 7020



## BOARD LEVEL COOLING - Narrow Channel 7020

Narrow Channel 7020 is a series of narrow channel board level heat sinks designed to cool TO-220 and TO-220-single gauge devices. Representative image only.

## ORDERING INFORMATION

Part Number	Device Type
7020BG	TO-220, TO-220-single gauge
7020B-MTG	TO-220, TO-220-single gauge
7020B-TC12-MTG	TO-220, TO-220-single gauge



## HEAT SINK DETAILS

Property	Details
Material	Aluminum
Finish	Black Anodize
Device Attachment Options	Thermal Clip (Factory Applied)
Thermal Interface Material	-

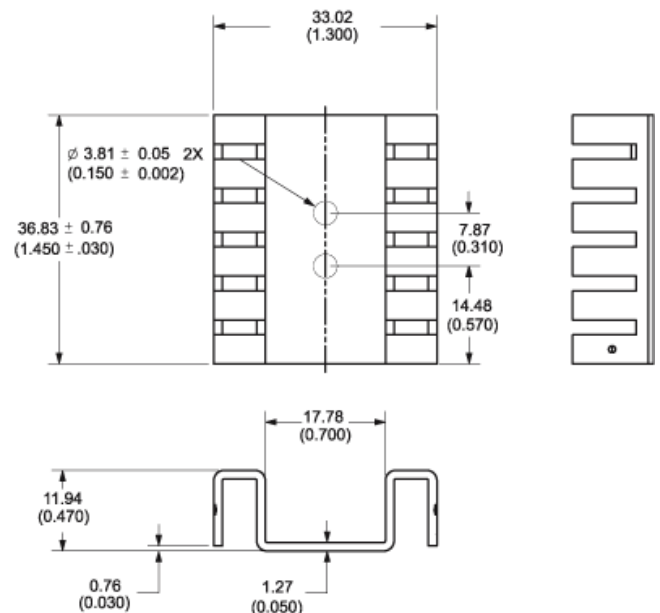
Property	Details
Heat Sink Width (mm)	33.02
Heat Sink Length (mm)	11.94
Heat Sink Height (mm)	36.83
Heat Sink Mounting Direction	Vertical

## MECHANICAL & PERFORMANCE

Drawing dimensions are shown in mm, (in)

Part Number	"X" Dim	"Y" Dim	"Z" Dim
7020BG	-	-	-
7020B-MTG	15.87 (0.625)	4.83 (0.190)	2.95 (0.116)
7020B-TC12-MTG	15.87 (0.625)	4.83 (0.190)	3.10 (0.122)

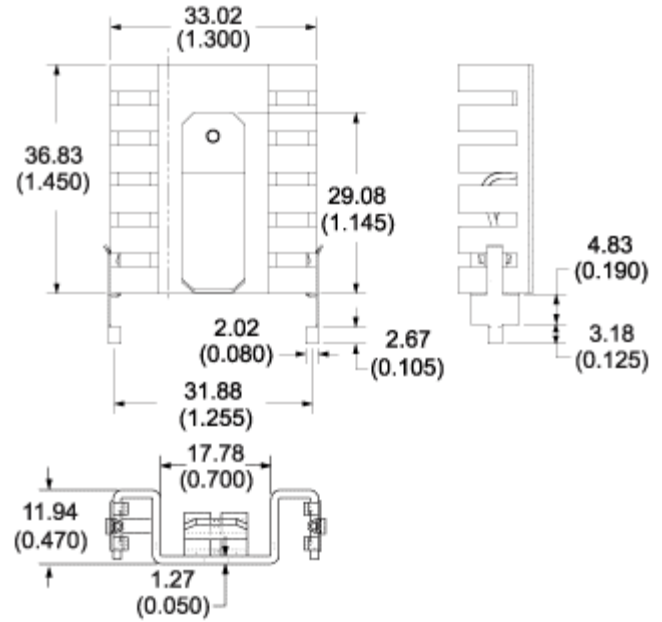
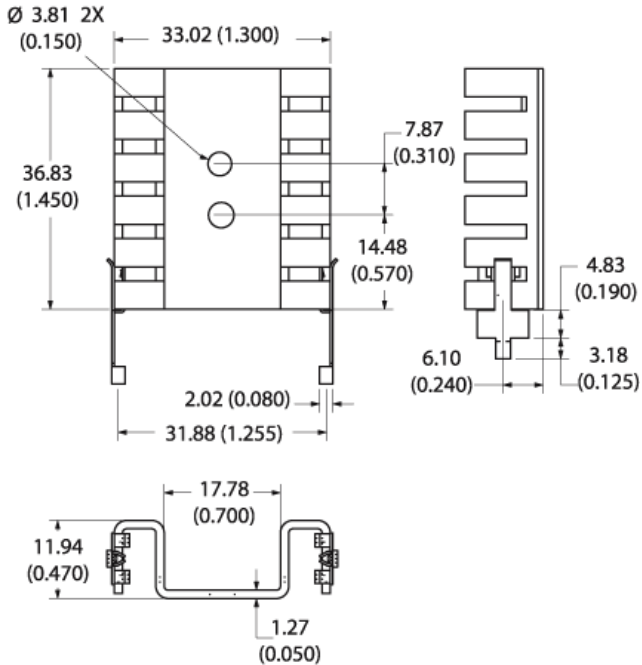
Part Number: 7020BG



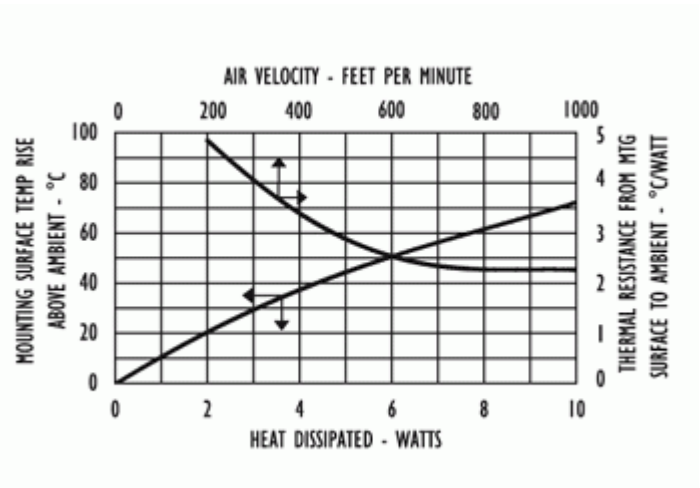
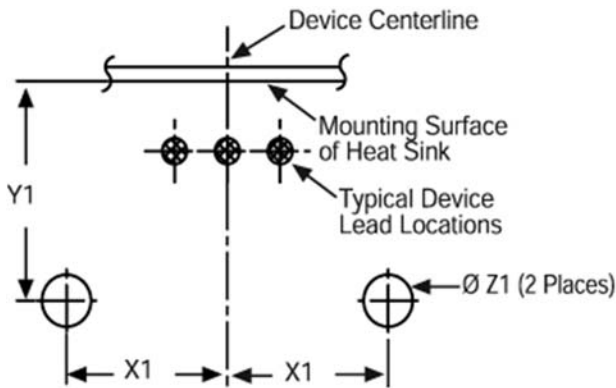
# Board Level Cooling – Narrow Channel 7020

Part Number: 7020B-MTG

Part Number: 7020B-TC12-MTG



Mounting Details: 7020B-MTG & 7020B-TC12-MTG



# Mouser Electronics

Authorized Distributor

Click to View Pricing, Inventory, Delivery & Lifecycle Information:

[Aavid Thermalloy:](#)

[7020B-MTG](#) [7020BG](#)