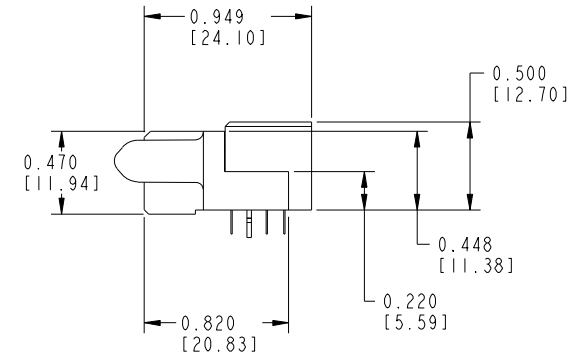
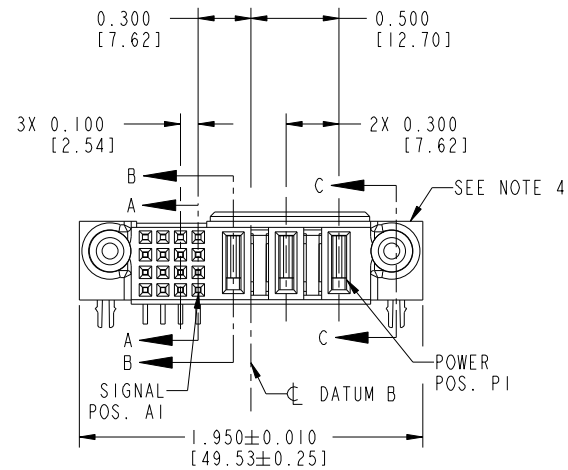
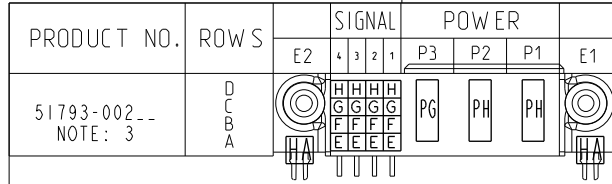




All rights strictly reserved. Reproduction or issue to third parties in any form whatever is not permitted without written authority from the proprietor. Property of FCI. Copyright FCI.

Tous droits strictement réservés. Reproduction ou communication à des tiers interdite sous quelque forme que ce soit sans autorisation écrite du propriétaire. Propriété de c FCI. Droits de reproduction FCI.

CODE	DIM "M" MATING LENGTH	CONTACT TYPE
E	N/A [N/A]	SIGNAL
F	N/A [N/A]	SIGNAL
G	N/A [N/A]	SIGNAL
H	N/A [N/A]	SIGNAL
PG	0.042 [1.07]	POWER
PH	0.092 [2.34]	POWER
HA	N/A [N/A]	HOLD-DOWN



mat'l code				SEE NOTE 2		tolerances unless otherwise specified		CUSTOMER		www.fciconnect.com	
litr	ecn no.	dr	date			linear	.XX±.01/0.X±0.3	COPY		title	
A	V03-1259	TAB	11/26/03				.XXX±.005/0.XX±0.13	projection		3ACP + 16S	
B	D607-0450	JC	11/09/07			angles	.XXX±.0020/0.XXX±0.051	INCH/MM		R/A SOLDER RECEPTACLE	
						dr	T. BRUNGARD 11/26/03	scale	1:1	product family	PwrBlade
						enrg	M. GRAY 11/26/03			size	dwg no
						chr	M. GRAY 11/26/03			A	51793-002
						appd	M. GRAY 11/26/03				code
											213
sheet index	revision sheet	B	B	B	B						sheet 1 of 4
		1	2	3	4						

Pro/E

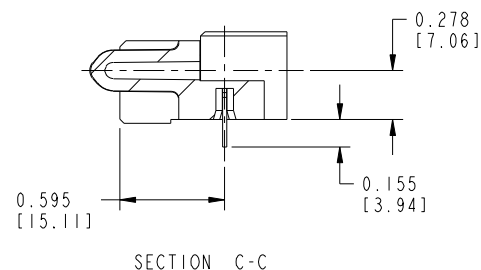
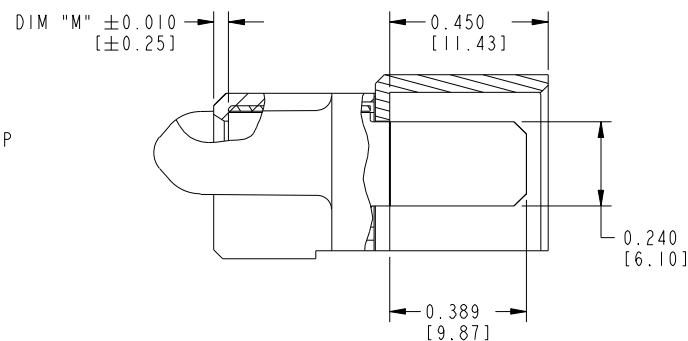
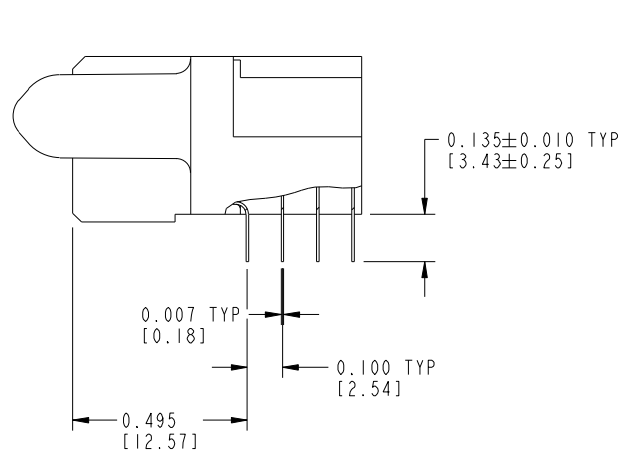
cage code 22526


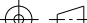

Tous droits strictement reserves. Reproduction ou communication a des tiers interdite sous quelque forme que ce soit sans autorisation écrite du propriétaire. Propriete de c FCI. Droits de reproduction FCI.



All rights strictly reserved. Reproduction or issue to third parties in any form whatever is not permitted without written authority from the proprietor. Property of FCI. Copyright FCI.

PRODUCT NUMBER
51793-002--
NOTE: 3



mat'l code SEE NOTE 2				tolerances unless otherwise specified				CUSTOMER				 www.fciconnect.com				
litr	ecn no.	dr	date	linear	.XX±.01/0.X±0.3				COPY				title3ACP + 16S R/A SOLDER RECEPTACLE			
B					.XXX±.005/0.XX±0.13				projection 							
				angles	.XXX±.0020/0.XXX±0.051				 INCH/MM				product familyPwrBlade			
					0°±2°											
				dr	T. BRUNGARD 11/26/03				scale1:1				size dwg no A 51793-002			
				enrg	M. GRAY 11/26/03											
				chr	M. GRAY 11/26/03				sheet2 of 4							
				appd	M. GRAY 11/26/03											
sheet index		revision sheet														

cage code 22526

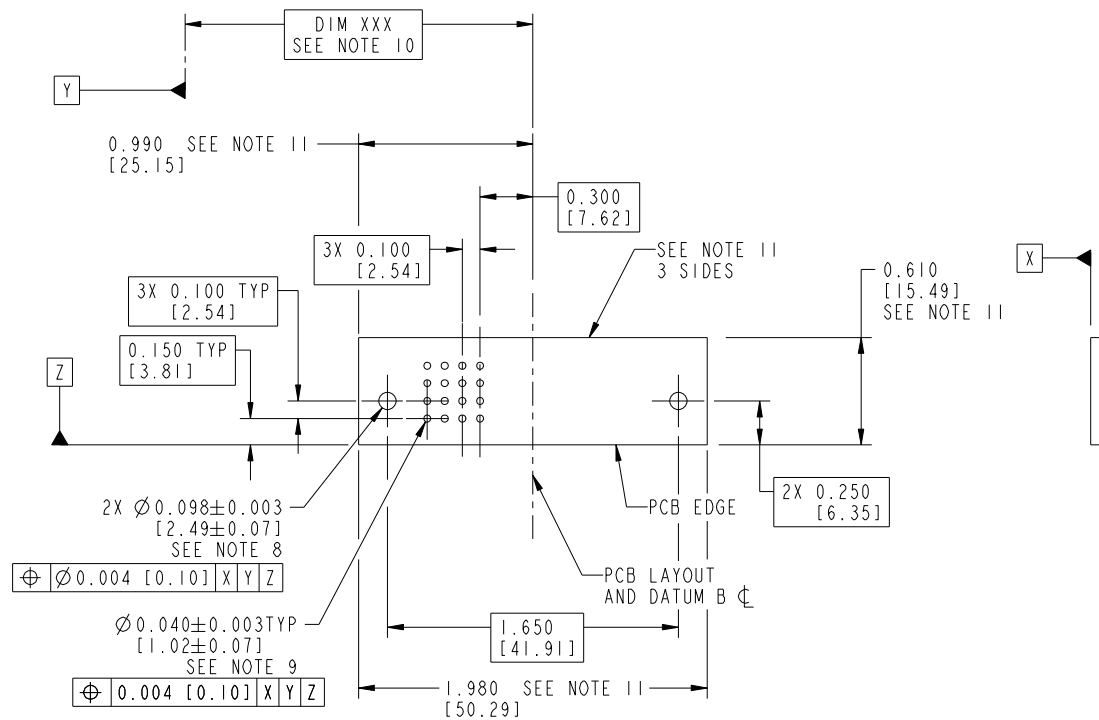
Pro/E

Tous droits strictement reserves. Reproduction ou communication a des tiers interdite sous quelque forme que ce soit sans autorisation écrite du propriétaire.
Propriete de c FCI. Droits de reproduction FCI.



All rights strictly reserved. Reproduction or issue to third parties in any form whatever is not permitted without written authority from the proprietor.
Property of FCI. Copyright FCI.

PRODUCT NUMBER
51793-002--
NOTE: 3



RECOMMENDED PCB LAYOUT

mat'l code				SEE NOTE 2		tolerances unless otherwise specified		CUSTOMER		FCI	
litr	ecn no.	dr	date			linear	.XX±.01/0.X±0.3	COPY		www.fciconnect.com	
B						angles	.XXX±.005/0.XX±0.13	projection		title	3ACP + 16S
							.XXX±.0020/0.XXX±0.051			R/A SOLDER RECEPTACLE	
						dr	T. BRUNGARD 11/26/03	INCH/MM		product family	PwrBlade
						enrg	M. GRAY 11/26/03	scale		size	dwg no
						chr	M. GRAY 11/26/03	1:1		A	51793-002
						appd	M. GRAY 11/26/03				
sheet index	revision sheet										

Pro/E

cage code 22526

Tous droits strictement reserves. Reproduction ou communication a des tiers interdite sous quelque forme que ce soit sans autorisation écrite du propriétaire. Propriete de c FCI. Droits de reproduction FCI.

A



All rights strictly reserved. Reproduction or issue to third parties in any form whatever is not permitted without written authority from the proprietor. Property of FCI. Copyright FCI.

B

1 | 2

3 |

4

PRODUCT NUMBER
51793-002-- NOTE: 3

NOTES:

1. DIMENSIONS AND TOLERANCES ARE IN ACCORDANCE WITH
ASME Y14.5M, 1994 UNLESS OTHERWISE SPECIFIED.

CONNECTOR NOTES:


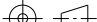
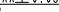

2. HOUSING MATERIAL: UL 94 V-0 GLASS FILLED HIGH-TEMP THERMOPLASTIC
POWER CONTACT MATERIAL: COPPER ALLOY
SIGNAL PIN MATERIAL: COPPER ALLOY
3. 51793-002; 51793-002LF PLATING SPEC.SEE PRINT:10064183
4. MANUFACTURER'S NAME, P/N, AND DATE CODE TO APPEAR ON
THIS SURFACE.
5. PRODUCT SPECIFICATION GS-12-149.
APPLICATION SPECIFICATION BUS-20-067.

6. PACKAGED IN TRAYS.

PCB NOTES:

7. ALL HOLE DIAMETERS ARE FINISHED HOLE SIZE.
8. MOUNTING HOLES, WHERE APPLICABLE, ARE UNPLATED.
9. $\varnothing .0453 \pm .0010$ [1.151 \pm 0.025] DRILLED HOLES PLATED WITH
.0003 [0.008] MIN SnPb OR Sn OVER .001 [0.03]
TO .003 [0.08] Cu PLATING TO ACHIEVE
 $\varnothing .040 \pm .003$ [1.02 \pm .07] HOLE.
10. "DIM XXX" TO BE DETERMINED BY THE CUSTOMER.
11. CONNECTOR KEEP-OUT ZONE.

A

mat'l code				SEE NOTE 2				tolerances unless otherwise specified				CUSTOMER								www.fciconnect.com							
litr		ecr no.		dr		date		linear	.XX±.01/0.X±0.3				COPY					title 3ACP + 16S R/A SOLDER RECEPTACLE									
B									.XXX±.005/0.XX±0.13				projection														
								angles	.XXX±.0020/0.XXX±0.051																		
									0°±2°																		
								dr	T. BRUNGARD 11/26/03								product family				PwrBlade				code		
								enrg	M. GRAY 11/26/03								size				dwg no				213		
								chr	M. GRAY 11/26/03				scale				A				51793-002				sheet 4 of 4		
								appd	M. GRAY 11/26/03																		
sheet index		revision sheet																									

B

1 | 2

Pro/E

3 |

cage code 22526

4

Mouser Electronics

Authorized Distributor

Click to View Pricing, Inventory, Delivery & Lifecycle Information:

[FCI / Amphenol:](#)

[51793-001LF](#) [51793-002LF](#) [51793-004LF](#) [51793-003LF](#)