

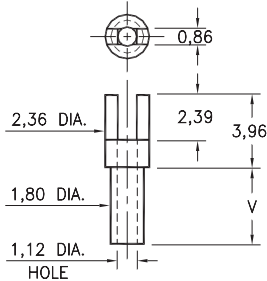
MALE PCB PINS

SOLDER TERMINALS SLOTTED

2314

2314-X-01-XX-00-00-07-0

Swage mount in 1,93 hole

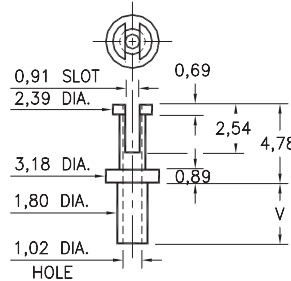


Basic Part Number	Board Thickness	Length V
2314-1	0,79	1,14
2314-2	1,57	2,39
2314-3	2,39	3,18
2314-4	3,18	3,96

2511

2511-X-01-XX-00-00-07-0

Swage mount in 1,93 hole

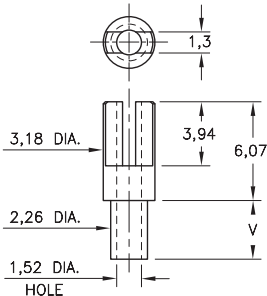


Basic Part Number	Board Thickness	Length V
2511-1	0,79	1,60
2511-2	1,57	2,39
2511-3	2,39	3,18
2511-4	3,18	3,96

2515

2515-X-01-XX-00-00-07-0

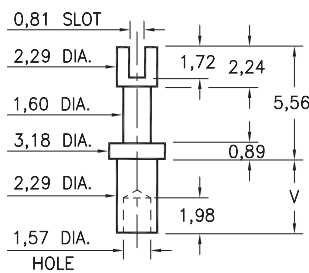
Swage mount in 2,39 hole



2516

2516-X-01-XX-00-00-07-0

Swage mount in 2,39 hole

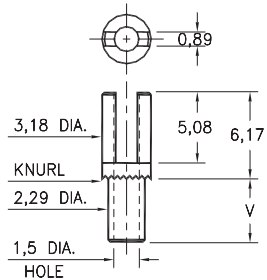


Basic Part Number	Board Thickness	Length V
251X-1	0,79	1,91
251X-2	1,57	2,67
251X-3	2,39	3,43
251X-4	3,18	3,73

2502

2502-X-01-XX-00-00-07-0

Swage mount in 2,39 hole



Basic Part Number	Board Thickness	Length V
2502-1	0,79	2,03
2502-2	1,57	2,82
2502-3	2,39	3,63
2502-4	3,18	4,42

SPECIFICATIONS:

Pin Material: Brass Alloy 360, 1/2 Hard
(Swage pins are annealed)

Dimensions: Millimeters

Tolerances On: Lengths: $\pm 0,13$
Diameters: $\pm 0,051$
Angles: $\pm 2^\circ$



ORDER CODE: XXXX - X - 01 - XX - 00 - 00 - 07 - 0

BASIC PART #

SPECIFY PIN FINISH:

- 01 5,08 μ m TIN/LEAD OVER NICKEL
- ◆ 80 5,08 μ m TIN OVER NICKEL (RoHS)
- ◆ 44 7,62 μ m SILVER OVER COPPER (RoHS)
- 50 7,62 μ m ELECTRO-SOLDER
(60/40 SnPb)



Mouser Electronics

Authorized Distributor

Click to View Pricing, Inventory, Delivery & Lifecycle Information:

[Mill-Max:](#)

[2515-2-01-44-00-00-07-0](#) [2515-3-01-44-00-00-07-0](#)