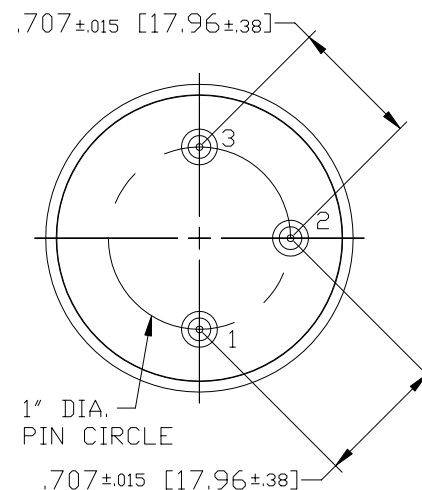
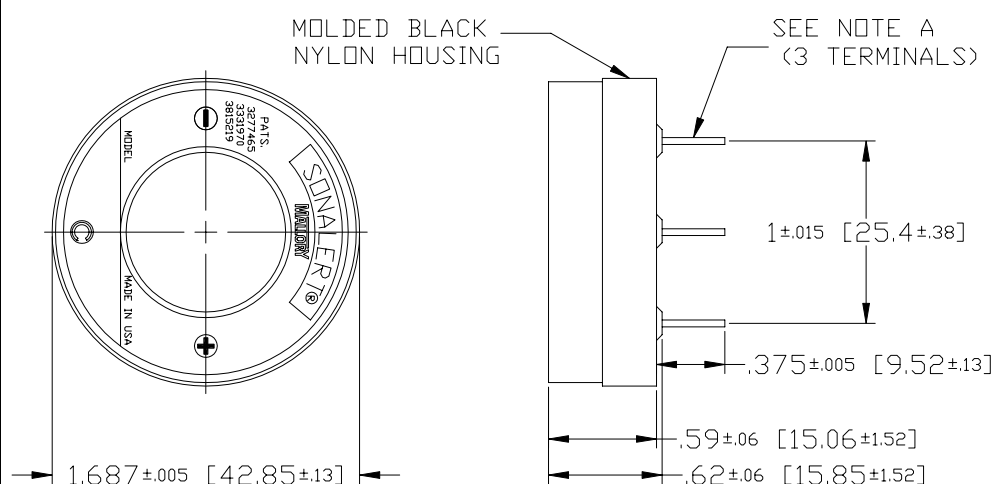


Specifications:

Sound level Category	Medium Sound Level
Mode of Operation	Continuous tone
Mounting	Printed Circuit Board (see note B)
Voltage Rating	1 - 5 Vdc
Frequency	2900 Hz \pm 500 Hz
Loudness (Min. Voltage)	55 dB(A) min. @ 2 FT and 1 Vdc
Loudness (Max Voltage)	68 dB(A) min. @ 2FT and 5 Vdc
Current Draw	3 mA Max @ 1 Vdc
Current Draw	16 mA Max @ 5 Vdc
Storage Temperature	-40°C to +85°C
Operating Temperature	-30°C to +65°C
Weight (Typical)	0.6 oz (17 g)
Housing	6/6 Nylon, Color Black
Options	For other options contact factory

Dimensions: Inches (mm)



NOTE A:

TERMINALS - .031" DIA. SOLDER COATED COPPER-CLAD
STEEL. TERMINAL 1 IS POSITIVE, TERMINAL 3 IS
NEGATIVE. TERMINAL 2 IS FOR SUPPORT ONLY - NO
ELECTRICAL CONNECTION.

NOTE B:

MOUNTING - INSERT INTO PRINTED CIRCUIT BOARD AND HAND OR MACHINE SOLDER.

Mouser Electronics

Authorized Distributor

Click to View Pricing, Inventory, Delivery & Lifecycle Information:

[Mallory Sonalert:](#)

[SBM2](#)