

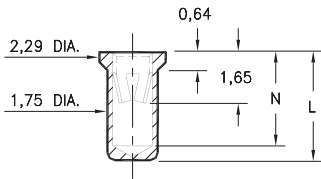
PIN RECEPTACLES

FOR 0,94 - 1,09 DIAMETER PINS

0331/9353

X3XX-0-15-XX-18-XX-10-0

Solder mount in 1,80 min. mounting hole
Also available on 24mm wide carrier tape:
1,000 parts per 330mm reel
See page 194.10 for Tape & Reel details

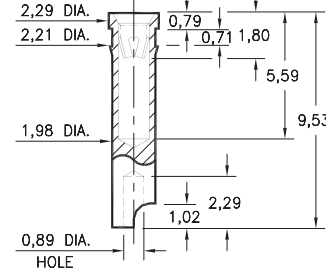


Basic Part Number	Length L	Depth N
0331-0	3,81	3,23
9353-0	4,32	3,73

7405

7405-0-18-XX-18-XX-10-0

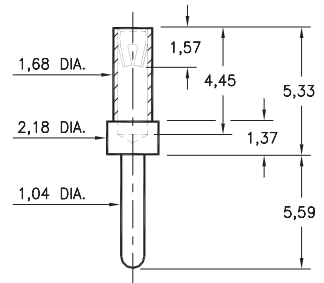
Press-fit in 2,13 mounting hole
Accepts wire sizes up to 0,64 dia.



3450

3450-0-15-XX-18-XX-04-0

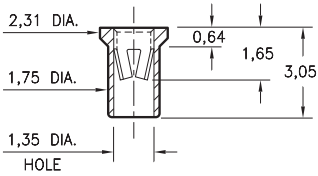
Solder mount in 1,09 min. mounting hole



7406

7406-0-15-XX-18-XX-10-0

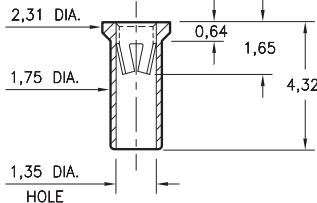
Solder mount in 1,80 min. mounting hole
Also available on 16mm wide carrier tape:
2,200 parts per 330mm reel
See page 194.10 for Tape & Reel details



9354

9354-0-15-XX-18-XX-10-0

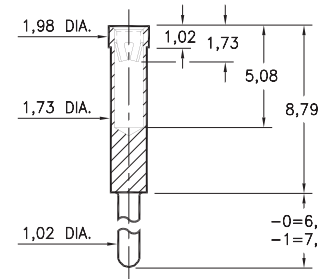
Solder mount in 1,80 min. mounting hole
Also available on 12mm wide carrier tape:
1,400 parts per 330mm reel
See page 194.10 for Tape & Reel details



0319

0319-X-15-XX-18-XX-04-0

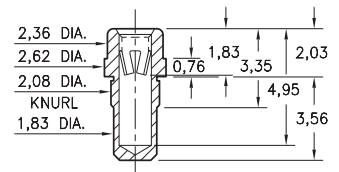
Solder mount in 1,07 min. mounting hole



9357

9357-0-15-XX-18-XX-10-0

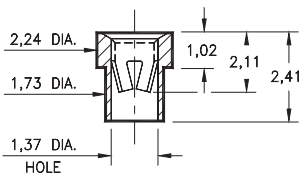
Press-fit in 1,98 mounting hole



3520

3520-0-15-XX-18-XX-10-0

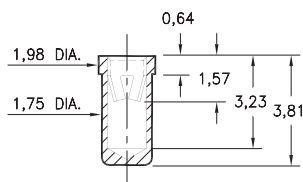
Solder mount in 1,78 min. mounting hole



8331

8331-0-15-XX-18-XX-10-0

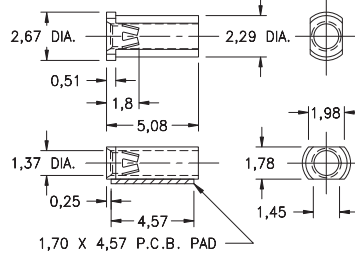
Solder mount in 1,80 min. mounting hole
Also available on 16mm wide carrier tape:
1,900 parts per 330mm reel
See page 194.10 for Tape & Reel details



6628

6628-0-18-XX-18-XX-10-0

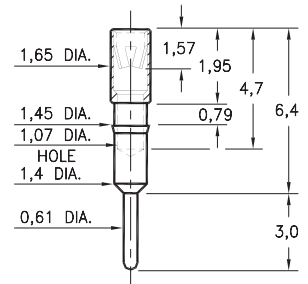
Surface mount
Also available on 12mm wide carrier tape:
3,700 parts per 330mm reel
See page 194.10 for Tape & Reel details



1313

1313-0-15-XX-18-XX-04-0

Press-fit in 1,42 mounting hole



SPECIFICATIONS:

Shell Material: Brass Alloy 360, 1/2 Hard

Contact Material: Beryllium Copper Alloy 172, HT

Dimensions: Millimeters

Tolerances On: Lengths: ± 0,13

Diameters: ± 0,051

Angles: ± 2°



ORDER CODE: XXXX - X - XX - 18 - XX - XX - 0

BASIC PART #

SPECIFY SHELL FINISH:

01 5,08µm TIN/LEAD OVER NICKEL

◆ 80 5,08µm TIN OVER NICKEL (RoHS)

◆ 15 0,25µm GOLD OVER NICKEL (RoHS)

SPECIFY CONTACT FINISH:

01 5,08µm TIN/LEAD OVER NICKEL

◆ 80 5,08µm TIN OVER NICKEL (RoHS)

◆ 27 0,76µm GOLD OVER NICKEL (RoHS)

SELECT CONTACT:

#18 CONTACT (DATA ON PAGE 257)

(For alternate contact choices, see group L on page 248)



Mouser Electronics

Authorized Distributor

Click to View Pricing, Inventory, Delivery & Lifecycle Information:

[Mill-Max:](#)

[8331-0-15-80-18-27-10-0](#) [8331-0-15-15-18-14-10-0](#)