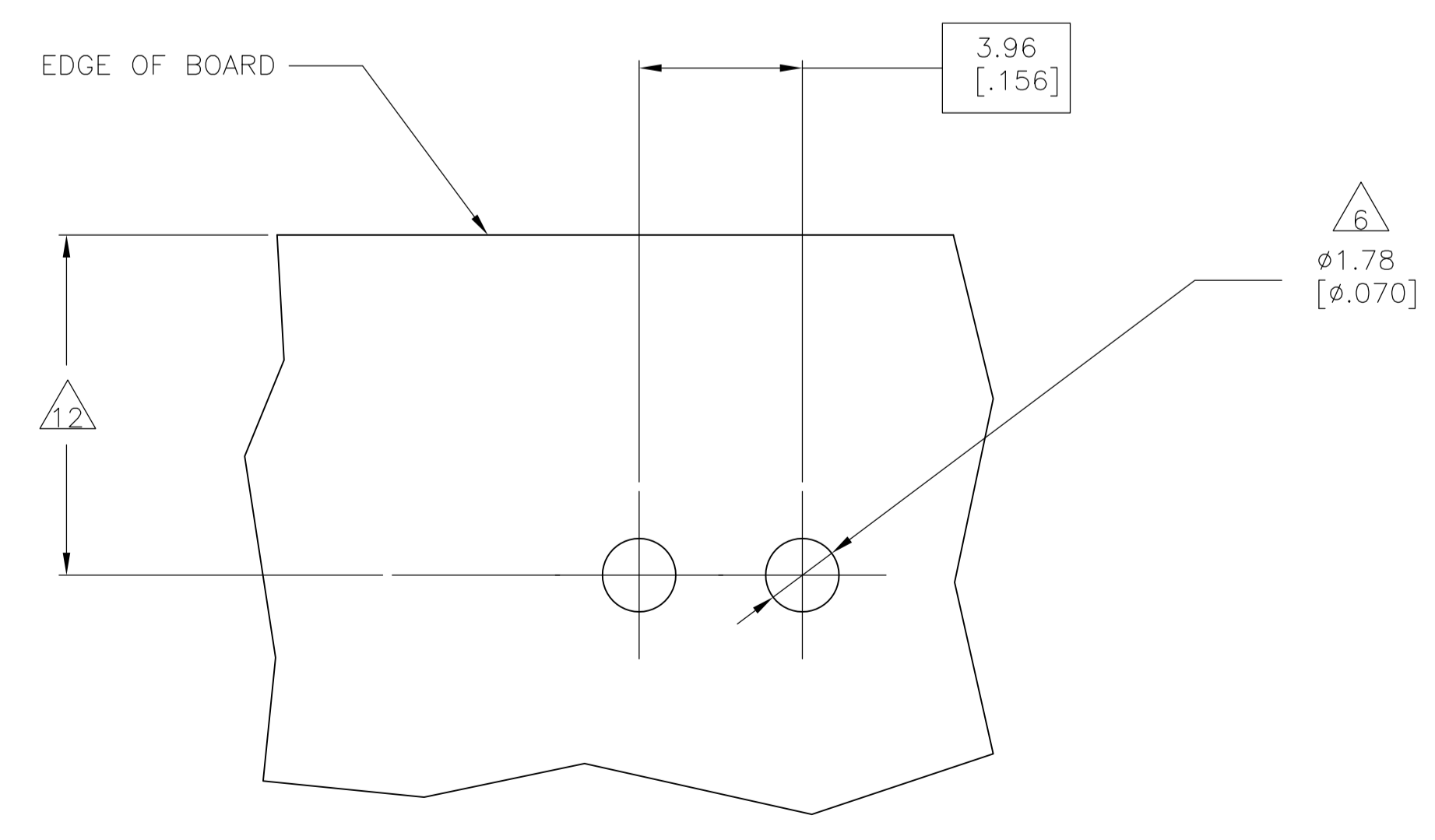
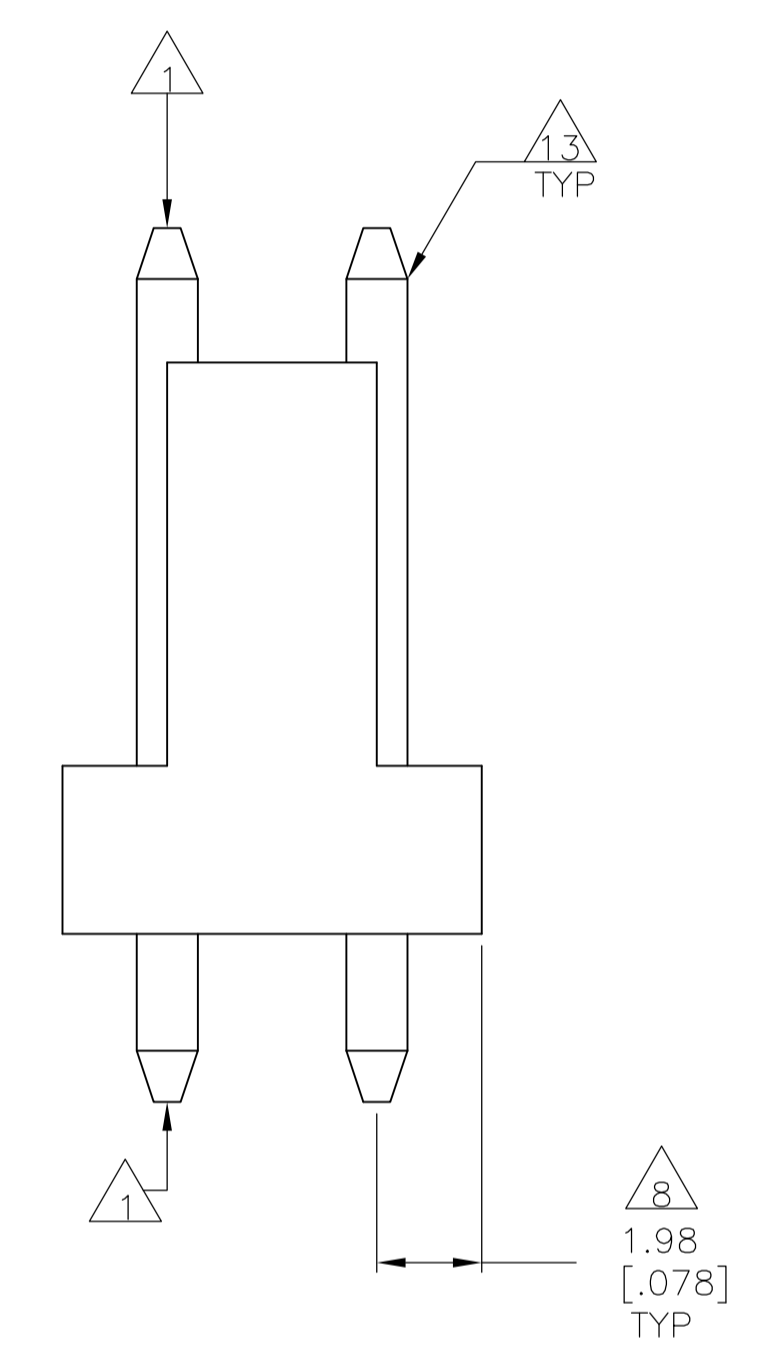
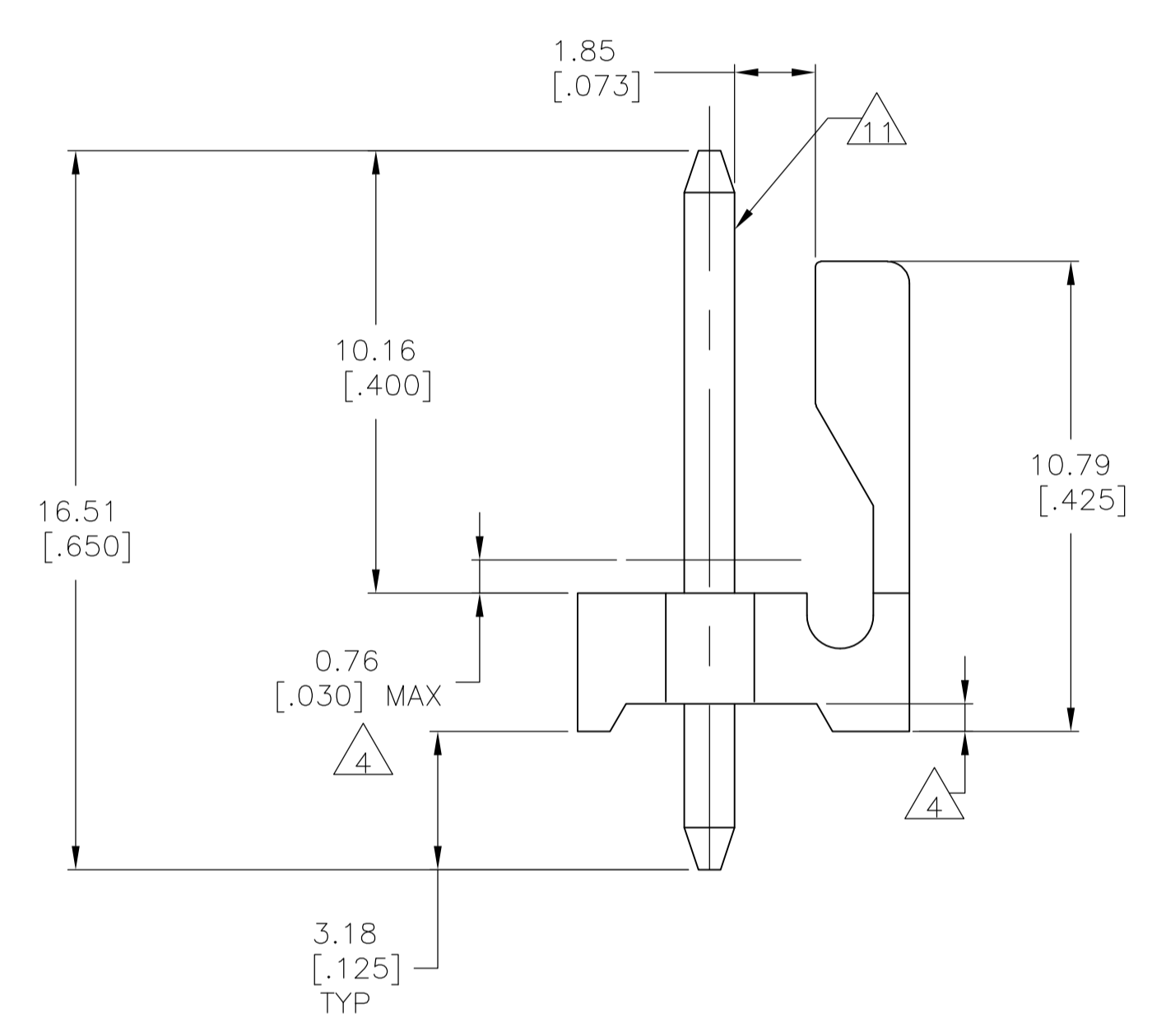
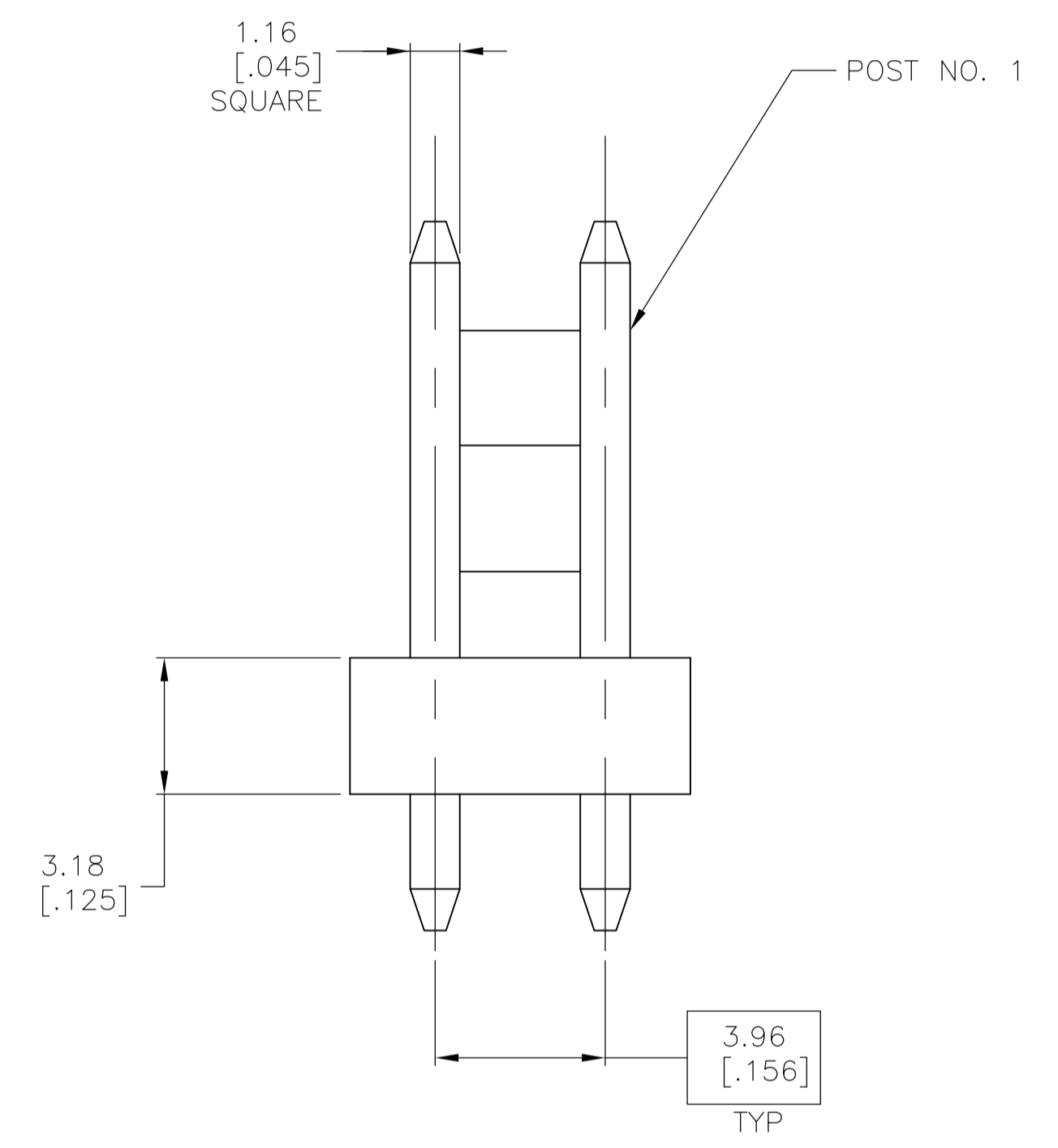
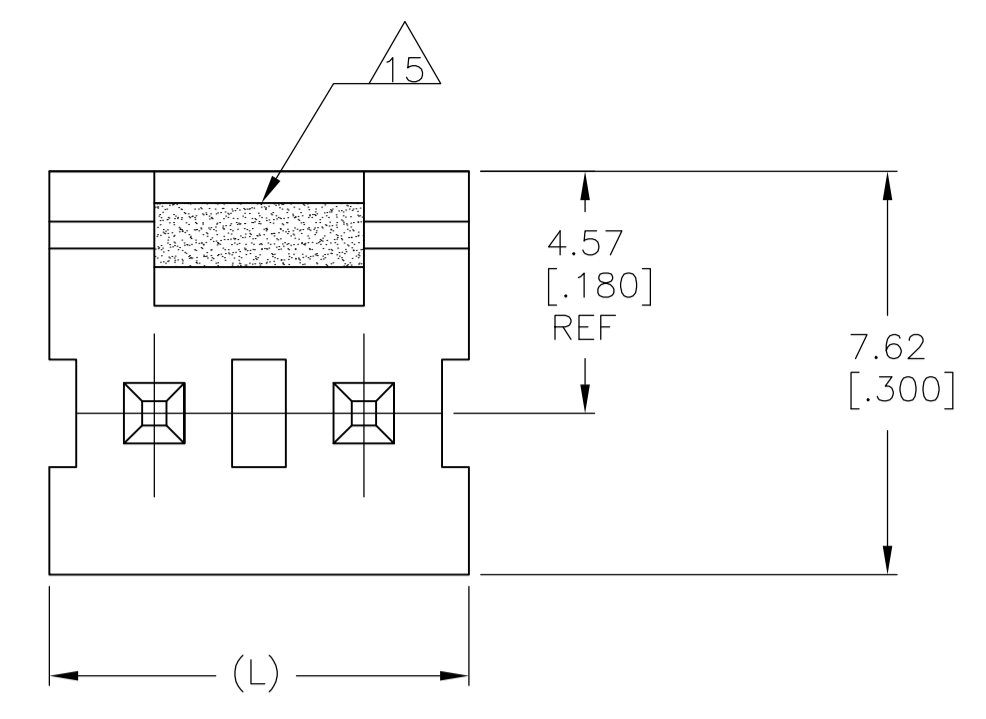


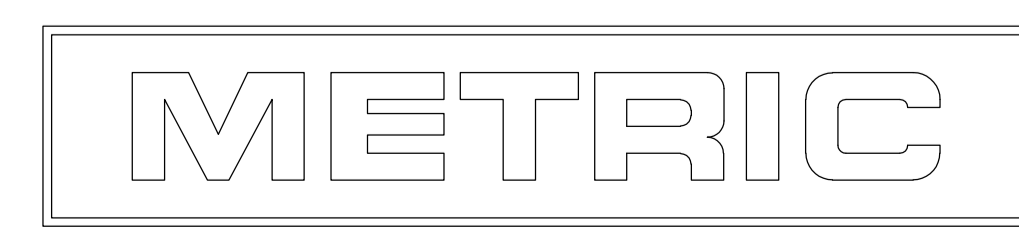
| LOC | | DIST | | REVISIONS | | | |
|-----|---------------------------|------|---------|-----------|-----|------|--|
| CM | 00 | REV | DATE | BY | CHK | APPV | |
| B1 | REVISED PER ECO-11-017228 | | 25AUG11 | HMR | MS | | |



- 1 POST TO WITHSTAND 13 NEWTONS (3 LBS.) MIN. AXIAL FORCE IN BOTH DIRECTIONS SHOWN WITHOUT DISLODGING.
- 2 TOLERANCES APPLY TO SOLDER SIDE OF BOARD.
- 4 PLASTIC FLASH PERMITTED IN THIS AREA.
- 5 PARTS COMPLY WITH AMP SOLDERABILITY SPEC. NO. 109-11-2.
- 6 ONE HOLE MAY BE UNDERSIZED (1.65 [.065]/1.52 [.060] DIA.) FOR ASSEMBLY RETENTION DURING WAVE SOLDERING.
- 7 MATERIAL: HEADER-THERMOPLASTIC POLYESTER
GLASS-FILLED 94V-0 (NATURAL)
POST-COPPER ALLOY (TIN PLATED)
- 8 COORDINATE DIMENSION APPLIES FROM CENTER OF ACTUAL FEATURE.
- 9 PLASTIC BURRS CAUSED BY CUT-OFF TOOLING ARE PERMITTED WITHIN THE MAXIMUM TOLERANCE ENVELOPE.
- 11 POST MUST WITHSTAND TWO 90° BENDS AGAINST EXTRUSION WITHOUT BREAKING.
- 12 DIMENSION SHOULD BE 4.45 [.175] MIN WHEN MATING WITH AN MTA 156 CONNECTOR ASSEMBLY OR AN SL-156 CONNECTOR ASSEMBLY.
- 13 PIN BURR OF 0.13 [.005] MAX. VERTICAL AND 0.08 [.003] MAXIMUM HORIZONTAL PERMITTED AT POST TIPS ON BOTH ENDS.
- 14 SPECIAL PACKAGING VARIATION FOR IMPROVED PRODUCT PROTECTION.
- 15 GREEN STRIPE.

| | | | |
|------|------|---------------------|-------------|
| 7.92 | .312 | 2 | 1744002-2 |
| MM | [IN] | NUMBER OF POSITIONS | PART NUMBER |
| L | | | |

| | | | |
|--|--|------------------------|--|
| THIS DRAWING IS A CONTROLLED DOCUMENT. | | DIN S. HOOVER 18DEC03 | TE Connectivity |
| DIMENSIONS: mm [INCHES] | | CHK: D. ROSSI 18DEC03 | |
| TOLERANCES UNLESS OTHERWISE SPECIFIED: | | APPV: D. ROSSI 18DEC03 | NAME: MAT-156 HEADER ASSEMBLY, FRICTION LOCK, STRAIGHT |
| 0. PLC ± - | | PRODUCT SPEC | 1.14 [.045] SQUARE POST, TIN PLATED |
| 1. PLC ± - | | APPLICATION SPEC | SIZE: A1 |
| 2. PLC ± 0.36 [.015] | | WEIGHT: - | CAGE CODE: 00779 |
| 3. PLC ± 0.13 [.005] | | CUSTOMER DRAWING | DRAWING NO: 1744002 |
| 4. PLC ± - | | SCALE: 7:1 | SHEET 1 OF 1 |
| ANGLES ± - | | | REV B1 |



RECOMMENDED MOUNTING HOLE PATTERN FOR 1.60 [.063] THICK P.C. BOARD

Mouser Electronics

Authorized Distributor

Click to View Pricing, Inventory, Delivery & Lifecycle Information:

[TE Connectivity:](#)

[1744002-2](#)