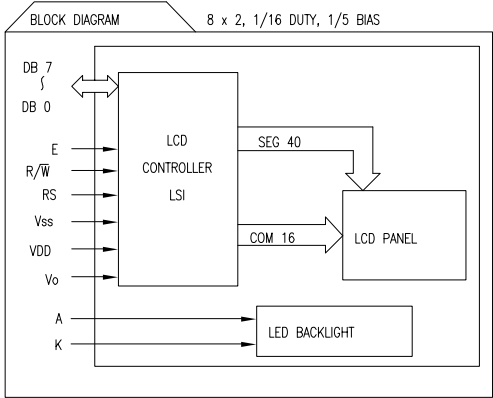
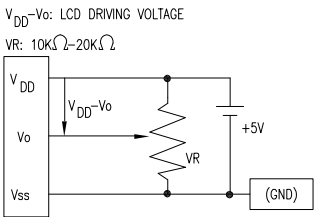


DATE: 06.01.10	DRAWN BY: JH
PAGE: 1 OF 2	CHKD BY: BC
SCALE: N/A	APRVD BY: KF
UNIT: mm [INCH]	(Pb)

PIN CONFIGURATION			
PIN NO.	SYMBOL	LEVEL	FUNCTION
1	V <sub>SS</sub>	–	POWER SUPPLY
2	V <sub>DD</sub>	–	
3	V <sub>O</sub>	–	
4	RS	H/L	REGISTER SELECT SIGNAL H: DATA INPUT L: INSTRUCTION INPUT
5	R/ <sub>W</sub>	H/L	H: DATA READ (MODULE-->MPU) L: DATA WRITE (MODULE<--MPU)
6	E	H,H->L	ENABLE
7~14	DB0~DB7	H/L	DATA BUS--SOFTWARE SELECTABLE 4 OR 8 BIT MODE.



ELECTRICAL CHARACTERISTICS			V <sub>DD</sub> =4.7V to 5.3V, T <sub>A</sub> =25°C					
ITEM			SYMBOL	CONDITION	STANDARD VALUE			UNIT
					MIN.	TYP.	MAX.	
SUPPLY VOLTAGE FOR LOGIC			V <sub>DD</sub> –V <sub>SS</sub>	–	–	5.0	–	V
SUPPLY CURRENT FOR LOGIC			I <sub>DD</sub>	V <sub>DD</sub> =5V	–	2.0	3.0	mA
INPUT VOLTAGE		HIGH	V <sub>IH</sub>	–	2.2	–	V <sub>DD</sub>	V
		LOW	V <sub>IL</sub>	–	0	–	0.6	V
OUTPUT VOLTAGE		HIGH	V <sub>OH</sub>	–	2.4	–	–	V
		LOW	V <sub>OL</sub>	–	–	–	0.4	V
*LED BACKLIGHT	VOLTAGE		V <sub>f</sub>	I <sub>f</sub> =70mA	–	4.5	5.0	V
	CURRENT		I <sub>f</sub>	–	–	70	110	mA
	POWER CUNSUMPTION		P <sub>D</sub>	–	–	315	–	mW
	LUMINOUS		L	I <sub>f</sub> =70mA	70	–	–	cd/m <sup>2</sup>
	COLOR		–	–	–	–	–	nm

\*ONLY APPLIES TO MODULES WITH BACKLIGHT

ABSOLUTE MAXIMUM RATINGS					
ITEM	SYMBOL	TEST CONDITION	STANDARD VALUE		UNIT
SUPPLY VOLTAGE FOR LOGIC	V <sub>DD</sub> -V <sub>SS</sub>	Ta=25°C	4.7	5.3	V
SUPPLY VOLTAGE FOR LCD DRIVE	V <sub>DD</sub> -V <sub>O</sub>	–	4.2@50°C	4.8@0°C	V
INPUT VOLTAGE	V <sub>I</sub>	Ta=25°C	V <sub>SS</sub>	V <sub>DD</sub>	V
OPERATING TEMPERATURE	T <sub>opr</sub>	LCM-H	–20	70	°C
STORAGE TEMPERATURE	T <sub>stg</sub>	LCM-H	–30	80	°C

# Mouser Electronics

Authorized Distributor

Click to View Pricing, Inventory, Delivery & Lifecycle Information:

Lumex:

[LCM-H00802DSF](#) [LCM-H00802DTF](#)