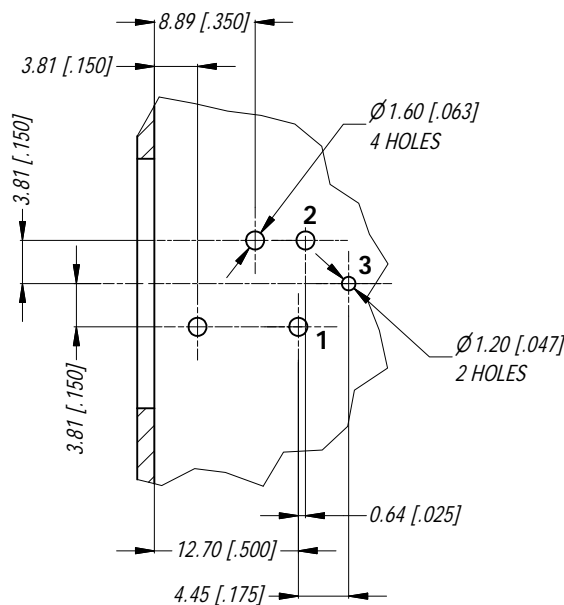


MIN MOUNTING PITCH (1:1)

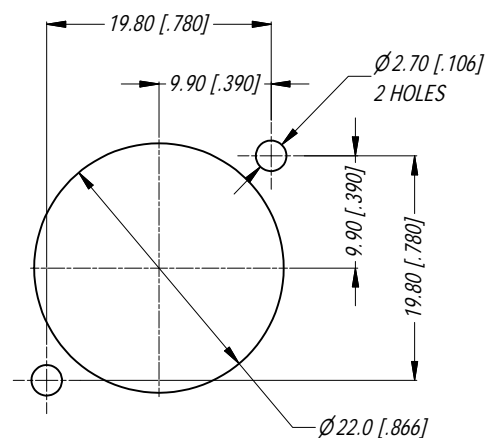


### PCB LAYOUT

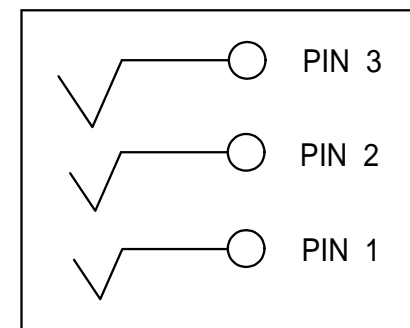
TOLERANCE :  $\pm 0.05$  [0.002 in]

NOTE: DIMS IN PARENTHESES ARE IN INCHES

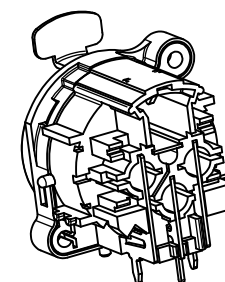
NOTE: SUFFIX "B" IN THE PART No. INDICATES BULK PACK.



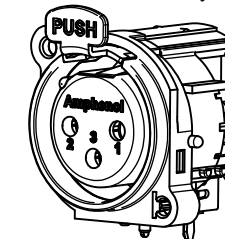
PANEL CUT OUT  
REAR VIEW



SCHEMATIC CHART



3D VIEW (1:1)

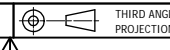


REV	DESCRIPTION	DATE	BY	CHG NO
2	ADD SUFFIX TO PART No.	27/08/15	T.N	9318
1	CHANGE NEW LEVER & SPRING	18/12/08	A.O	8793
0	FIRST ISSUE	18/04/07	T.N	8686

REVISION HISTORY

TITLE: <b>XLR FEMALE B TYPE CONNECTOR CUSTOMER DWG</b>		<b>Amphenol</b> Amphenol Australia Pty Ltd, 2 Fiveways Blvd, Keysborough, Vic3173	
DRAWING NO. <b>55010468-000-2</b>	SHEET <b>2/2</b>		

UNLESS OTHERWISE SPECIFIED TOLERANCE TO BE:		THIS DOCUMENT IS THE PROPERTY OF AMPHENOL AUSTRALIA PTY. LTD. NO PART THEREOF MAY BE REPRODUCED AND USED WITHOUT THE PRIOR WRITTEN CONSENT OF THE OWNER			
LINEAR		ANGULAR			
X	±	X'	±	1	
X.X	±	X.X'	±	30°	
X.XX	±	X.X.X'	±	15°	
BREAK ALL SHARP EDGES AND REMOVE ALL BURRS		MATL: REFER TO COMPONENTS	CKD: P.M	DATE: 07/04/09	
DO NOT SCALE		FINISH: REFER TO COMPONENTS	APP'D: P.M	DATE: 07/04/09	
DIMENSIONS IN MILLIMETRES		SCALE: 3:2	PART No: AC3FBH-AU-B	SIZE: A4	



THIRD ANGLE  
PROJECTION

# Mouser Electronics

Authorized Distributor

Click to View Pricing, Inventory, Delivery & Lifecycle Information:

[Amphenol:](#)

[AC3FBH-AU-B](#)