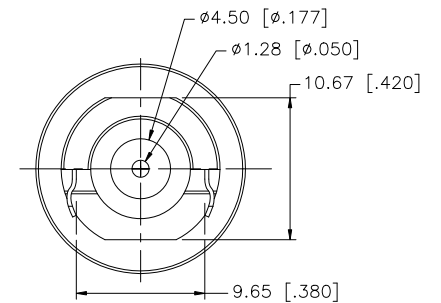
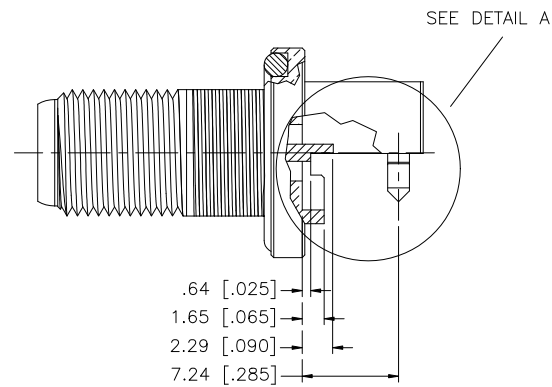
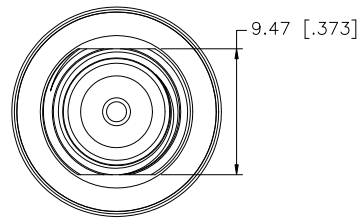
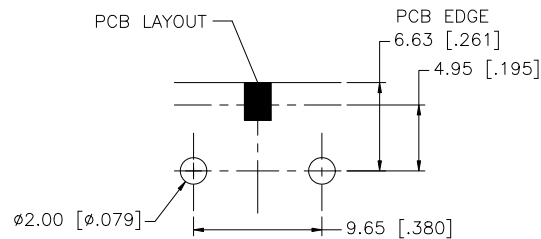
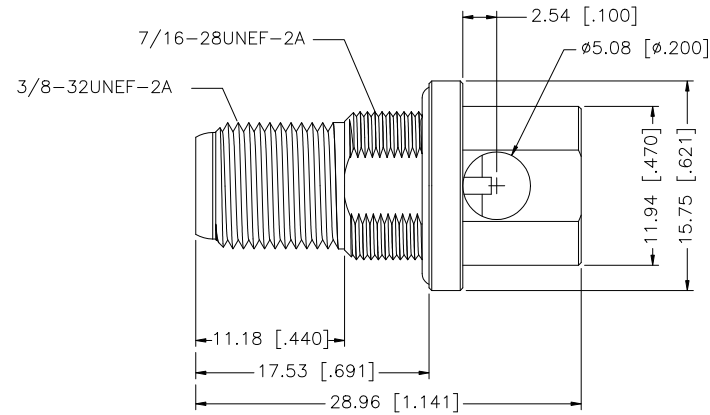
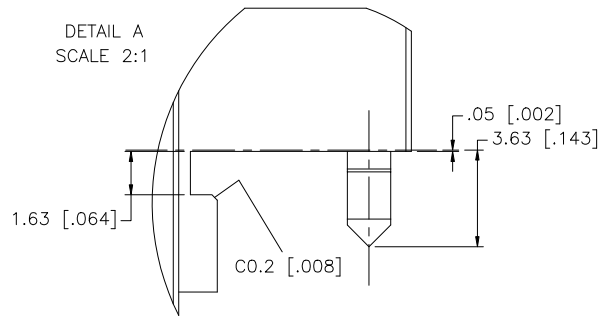


REV.	DATE	ECR NO.	DESCRIPTION
NC	12/29/08	—	INITIAL RELEASE



NOTE:

1. CENTER CONTACT TO ACCEPT MALE MATING CONTACTS FROM .022" [0.56] TO .041" [1.06].

					UNLESS OTHERWISE SPECIFIED DIMENSIONS ARE IN MILLIMETERS. DIMENSIONS IN [] ARE IN INCHES AND FOR CUSTOMER REFERENCE ONLY. UNLESS OTHERWISE SPECIFIED TOLERANCES FOR MILLIMETERS ARE: 0.5 – 8mm ± 0.20mm 8 – 30mm ± 0.40mm 30 – 120mm ± 0.50mm UNLESS OTHERWISE SPECIFIED TOLERANCES FOR INCHES ARE: .020 – .315 = ± 0.007” .315 – 1.180 = ± 0.015” 1.180 – 4.724 = ± 0.020” DO NOT SCALE DRAWING	APPROVALS		DATE		Amphenol Connex								
8						DRAWN	GRS	12/29/08										
7						CHECKED												
6						ISSUED				PART DESCRIPTION								
5	GASKET	SILICONE	RED	1			SHEET	1 OF 1			F END LAUNCH RECEPTACLE JACK							
4	CONTACT PIN	BER. COPPER	GOLD	1						PART NO.								
3	INSULATOR	PTFE	NATURAL	1						222202-10								
2	LEGS	S.S.	PASSIVATED S.S.	2		CAD FILE				DWG. NO.		222202-10.DWG	REV.	NC	SIZE	A	SCALE	NA
1	HOUSING	BRASS	NICKEL	1		C:/222/222202-10.DWG												
	DESCRIPTION	MATERIAL	FINISH	QTY														

Mouser Electronics

Authorized Distributor

Click to View Pricing, Inventory, Delivery & Lifecycle Information:

[Amphenol:](#)

[222202-10](#)