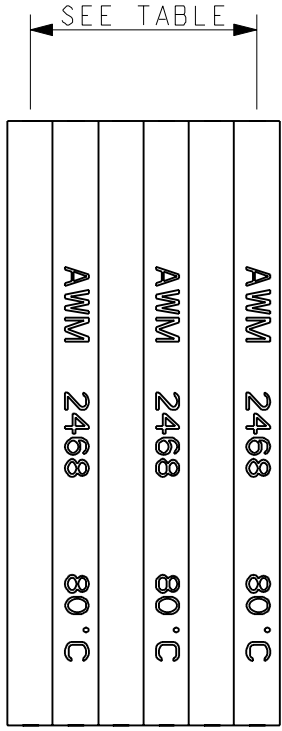
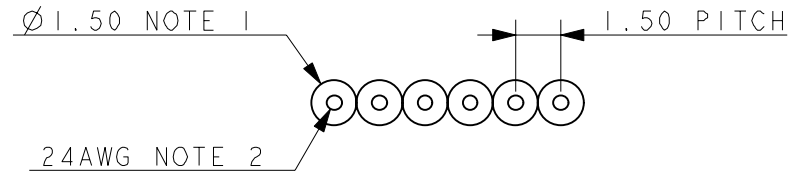


ELCO EUROPE (A DIVISION OF AVX LTD.) CONFIDENTIAL PROPRIETARY  
 THE DRAWING ON THIS PRINT AND INFORMATION THEREWITH ARE  
 PROPRIETARY TO ELCO EUROPE (A DIVISION OF AVX LTD.) AND  
 SHALL NOT BE USED OR DISCUSSED IN WHOLE OR IN PART  
 WITHOUT ELCO EUROPE'S WRITTEN CONSENT.



- NOTES :-
1. INSULATION :- WHITE PVC, FLAME RETARDENT VW-1.
  2. CONDUCTION :- 24AWG, TINNED COPPER, 11 STRANDS 0.16mmØ.
  3. NUMBER OF WAYS, SEE TABLE.
  4. MAXIMUM OPERATING TEMPERATURE 80°C.
  5. VOLTAGE RATING 300v.
  6. WIRE TO BE UL2468.
  7. UL MARKING ON ALTERNATE WIRES.
  8. SUPPLIED ON REELS, 305m PER REEL

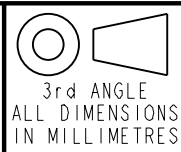
PART NUMBER	NUMBER OF WAYS
90-2220-7360-02-000	2
90-2220-7360-03-000	3
90-2220-7360-04-000	4
90-2220-7360-05-000	5
90-2220-7360-06-000	6



Elco Europe (A Division of AVX Ltd) CONFIDENTIAL PROPRIETY  
 The document on this print and information therewith are PROPRIETY  
 to Elco Europe (A Division of AVX Ltd) and shall not be copied  
 or disclosed in whole or in part without Elco Europe's written consent.

FORM-106-01-056-1 ISS 7

Release No.  
 History  
 102838  
 25.07.2012  
 08.08.2012  
 28.08.2012



**ELCO**  
 © COPYRIGHT ELCO EUROPE  
 NOT TO BE DISCLOSED OR COPIED  
 WITHOUT WRITTEN PERMISSION

Drawn  
 N.C.H.  
 Size  
 AV

Description  
 RIBBON CABLE - 24AWG  
 Part Number  
 90-2220-7360-0X-000S

DATE  
 25-Jul-12  
 Issue  
 C

# Mouser Electronics

Authorized Distributor

Click to View Pricing, Inventory, Delivery & Lifecycle Information:

[AVX:](#)

[902220736003000](#) [902220736006000](#) [902220736005000](#) [902220736002000](#) [902220736004000](#)