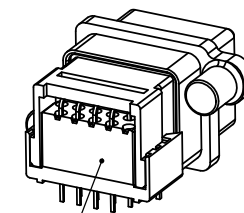
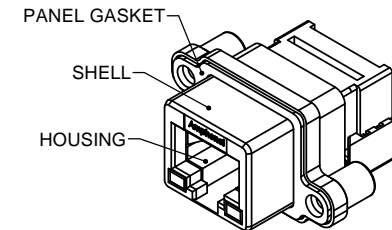
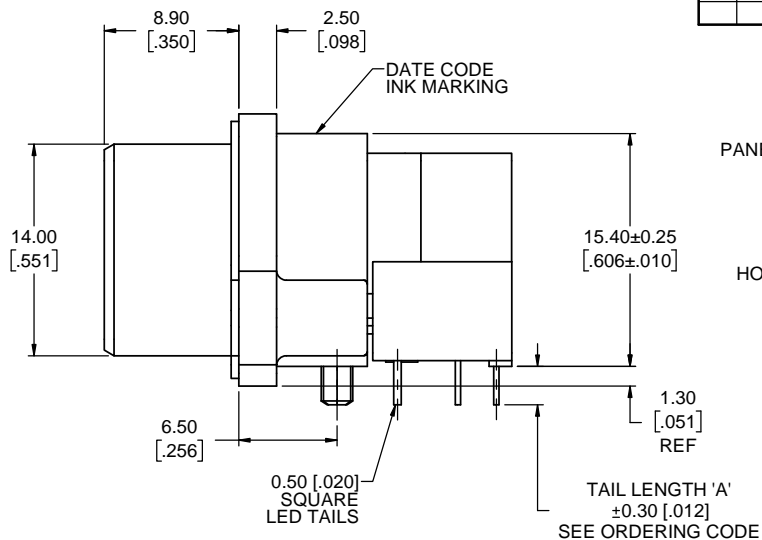
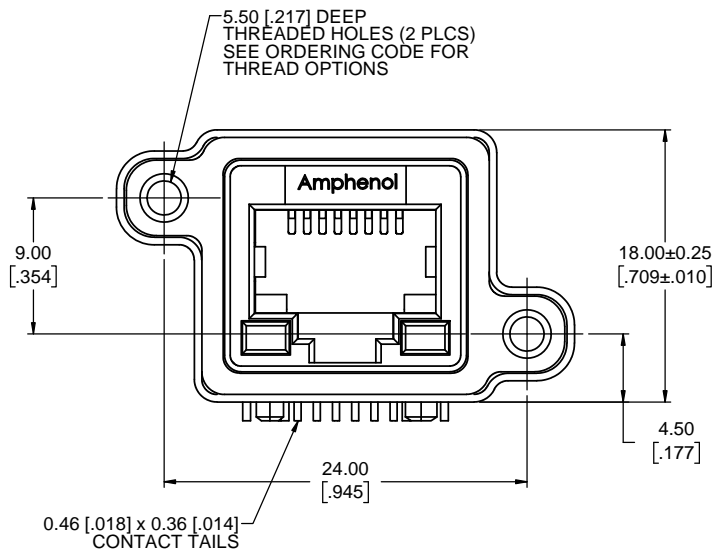


REVISIONS			
REV	DESCRIPTION, ECN, EAR NO.	DATE	APPD
C	PRODUCT DRAWING (EAR 14600)	AUG31/17	K.L.



ORDERING CODE: MRJ-63XX-X1

SERIES, RUGGED RJ

FILTERED RECEPTACLE, RIGHT ANGLE, PCB TAIL

NUMBER OF CONTACTS

8 = 8 CONTACTS

A = 10 CONTACTS

LED OPTION

0 = NONE

1 = GREEN LEFT, YELLOW RIGHT

4 = YELLOW LEFT, GREEN RIGHT

5 = GREEN LEFT, GREEN RIGHT

TAIL LENGTH & MOUNTING HOLE

THREAD OPTION

0 = TAIL LENGTH 'A' = 2.54 [.100] #4-40 UNC THREAD

B = TAIL LENGTH 'A' = 3.81 [.150] #4-40 UNC THREAD

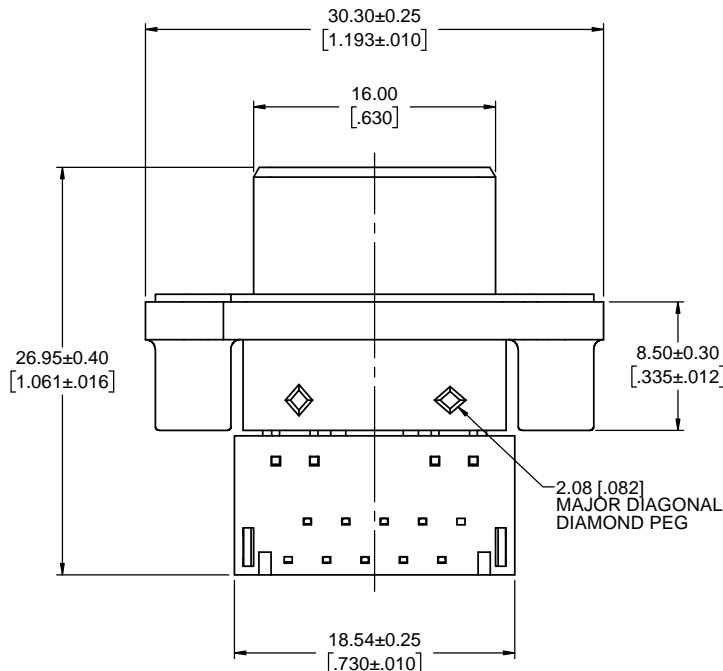
M = TAIL LENGTH 'A' = 2.54 [.100] M3 x 0.5 THREAD

P = TAIL LENGTH 'A' = 3.81 [.150] M3 x 0.5 THREAD

SINGLE PORT

NOTES:

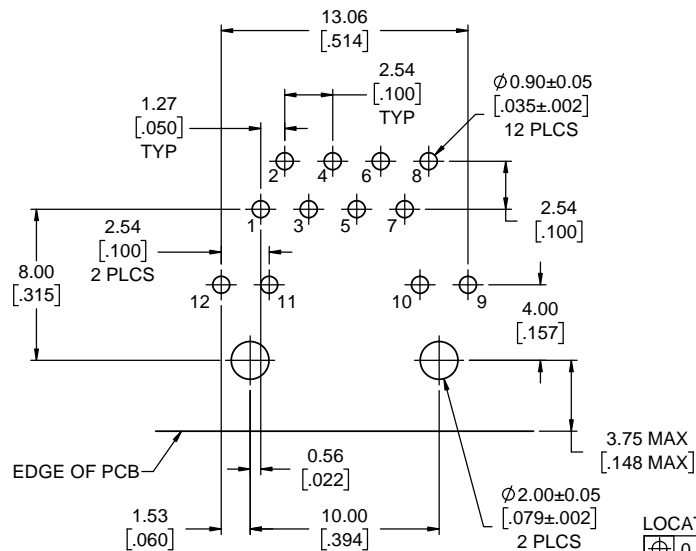
- MATERIAL:
ALL MATERIALS ARE RoHS COMPLIANT PER EU DIRECTIVE 2011/65/EU AND AMENDMENTS
 - SHELL - DIECAST ZINC, NICKEL PLATED
 - CONTACTS - PHOSPHOR BRONZE WITH 1.27µm [50µ"] GOLD OVER 1.27µm [50µ"] MINIMUM NICKEL ON THE MATING AREA AND MATTE TIN OVER NICKEL ON THE CONTACT TAILS.
 - INSERTS - ENGINEERING THERMOPLASTIC, UL94V-0 FLAMMABILITY RATING
 - REAR INSERTS: NYLON, FRONT INSERT: CLEAR POLYCARBONATE
 - PANEL GASKET - SILICONE RUBBER
 - FERRITE - NICKEL ZINC IRON OXIDE
 - LED'S - EPOXY LENS, STEEL TAILS WITH TIN PLATING
- ENVIRONMENTAL PERFORMANCE PER IEC 60529 CODE IP67 FOR SEAL BETWEEN MATING AREA AND PCB SIDE OF CONNECTOR. GASKET PROVIDES SEAL TO INSIDE FACE OF PANEL.
- CURRENT RATING: 1.5 AMPERES
- CONTACT RESISTANCE: 30 MILLIOHMS MAXIMUM
- OPERATING TEMPERATURE: -40°C TO +105°C
- MINIMUM IMPEDANCE (FERRITE): 38 OHMS @ 25 Mhz
- CUSTOMER TO VERIFY THAT ALL PROCESS CLEANERS ARE COMPATIBLE WITH POLYCARBONATE MATERIAL



UNLESS SPECIFIED OTHERWISE	DRAWN	G.LI	JAN18/08
PRIMARY UNITS MILLIMETERS	CHECKED	K.LAMBIE	JAN18/08
SECONDARY INCHES	M.E. APPD		
REFERENCE IN PARENTHESES	Q.A. APPD		
GENERAL TOLERANCES	DWG APPR.		
1 DECIMAL PLACE	ENG. REL. NO.	EAR 13217	
2 DECIMAL PLACES ±0.15	REF.		
3 DECIMAL PLACES	THIRD ANGLE PROJECTION		
ANGULAR DEGREES			

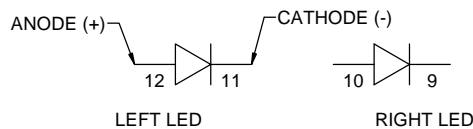
Amphenol Canada Corp. www.amphenolcanada.com MRJ SERIES RUGGED MODULAR JACK, EMI FILTERED, 8 & 10 POSITION RIGHT ANGLE, WITH LED, TAIL LENGTH & THREAD OPTIONS, RoHS COMPLIANT			
DWG. NO.	P-MRJ-63XX-X1	REV	C
CODE ID NO.	03554	DWG SIZE:	X
SCALE:	4:1	SHEET 1 OF 2	

REVISIONS			
REV	DESCRIPTION, ECN, EAR NO.	DATE	APPD
C	PRODUCT DRAWING (EAR 14600)	AUG31/17	K.L.

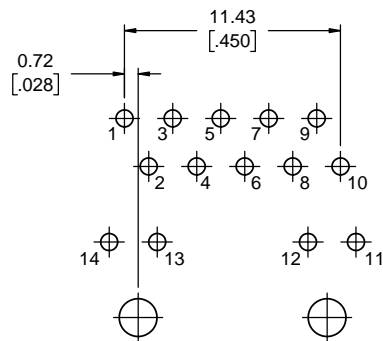


RECOMMENDED PCB LAYOUT FOR 8 POSITION
COMPONENT SIDE OF BOARD

LOCATE HOLES
 $\varnothing 0.13 [0.005]$ DIA
 POSITION DIMENSIONS
 ARE BASIC

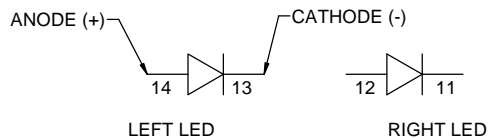


8 POSITION LED SCHEMATIC
(GREEN OR YELLOW)

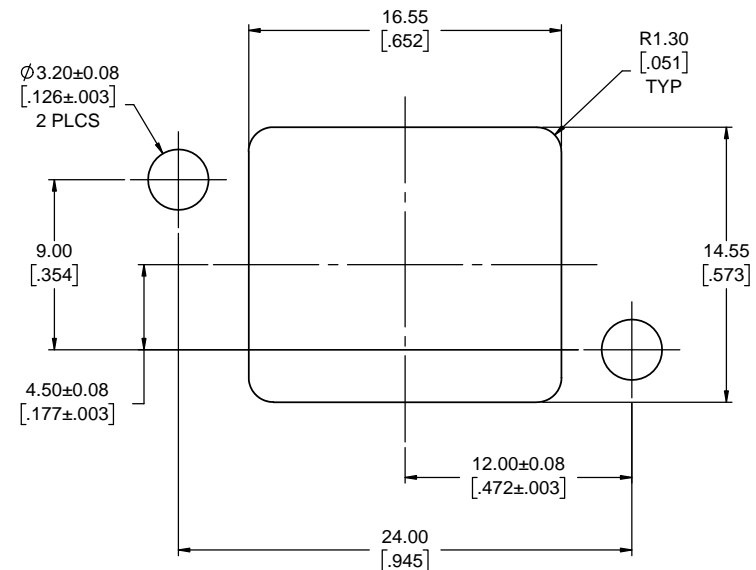


RECOMMENDED PCB LAYOUT FOR 10 POSITION
COMPONENT SIDE OF BOARD

LOCATE HOLES
 $\varnothing 0.13 [0.005]$ DIA
 POSITION DIMENSIONS
 ARE BASIC



10 POSITION LED SCHEMATIC
(GREEN OR YELLOW)



RECOMMENDED PANEL CUTOUT
OUTSIDE PANEL VIEW



UNLESS SPECIFIED OTHERWISE	DRAWN	G.LI	JAN18/08
PRIMARY UNITS MILLIMETERS	CHECKED	K.LAMBIE	JAN18/08
SECONDARY INCHES	M.E. APP'D		
REFERENCE IN PARENTHESES	Q.A. APP'D		
GENERAL TOLERANCES	DWG APPR.		
1 DECIMAL PLACE	ENG. REL. NO.	EAR 13217	
2 DECIMAL PLACES ±0.15	REF.		
3 DECIMAL PLACES	THIRD ANGLE PROJECTION		
ANGULAR DEGREES			

Amphenol Canada Corp. www.amphenolcanada.com			
MRJ SERIES RUGGED MODULAR JACK, EMI FILTERED, 8 & 10 POSITION RIGHT ANGLE, WITH LED, TAIL LENGTH & THREAD OPTIONS, RoHS COMPLIANT			
DWG. NO.	P-MRJ-63XX-X1	REV	C
CODE ID NO.	03554	DWG SIZE:	X
SCALE:	5:1	SHEET 2 OF 2	

Mouser Electronics

Authorized Distributor

Click to View Pricing, Inventory, Delivery & Lifecycle Information:

[Amphenol:](#)

[MRJ-6381-01](#) [MRJ6380B1](#) [MRJ638401](#) [MRJ6380P1](#) [MRJ6380M1](#) [MRJ638501](#) [MRJ638001](#) [MRJ6781M1](#)