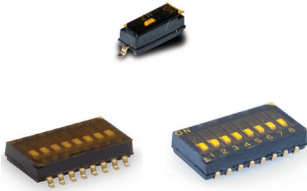


TDA Series Ultra-miniature Surface Mount Half-pitch DIP Switches

DIP H



Features/Benefits

- Bifurcated contact for increased electrical reliability
- Process sealed for surface mount soldering and washable processing
- RoHS compliant

Typical Applications

- Hand-held electronic devices
- Portable computer and electronic devices
- Instrumentation and controls

Specifications

SWITCH FUNCTION: SPST – 1, 2, 4, 6, 8 & 10 positions.

CONTACT RATING:

24 V DC, 25 mA (switching).

50 V DC, 100 mA (steady state).

MECHANICAL AND ELECTRICAL LIFE: 1,000 cycles.

CONTACT RESISTANCE: 100 mΩ max.

INSULATION RESISTANCE: 100 MΩ @ 100 V DC min.

DIELECTRIC STRENGTH: 300 V AC min.

STORAGE TEMPERATURE: -40°C to 85°C.

OPERATING TEMPERATURE: -40°C to 85°C.

OPERATING FORCE: 4,9N max.

SOLDERABILITY: Per MIL-STD-202F method 208D, or EIA RS-186E method 9 (1 hour steam aging).

PACKAGING: Switches supplied in rigid dispensing tubes in full tube quantities only, this may affect order quantity. Numbers of switches per tube varies with model. Tape and reel packaging quantity varies with model.

Materials

CASE & COVER: PPS (UL94V-0)

ACTUATOR: LCP (UL94V-0).

CONTACTS: Copper alloy, with gold plate over nickel plate.

TERMINALS: Copper alloy, with gold flash over nickel plate.

All terminals are insert molded.

TAPE SEAL: Polyimide.

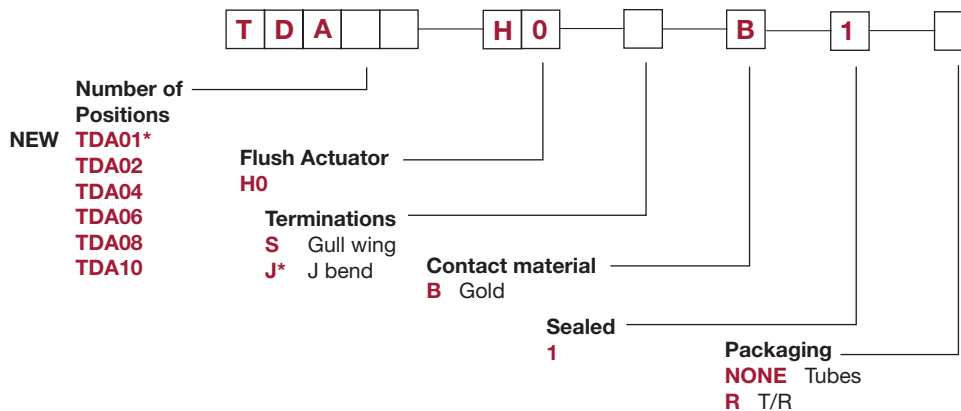
Note: Specifications and materials listed above are for switches with standard options. For information on specific and custom switches, consult Customer Service Center.

Note: All switches supplied in "OFF" position.

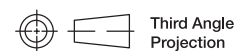
How To Order

The Build-A Switch concept allows you to mix and match options to create the switch you need. Below is a complete listing of options shown in catalog. To order, simply select desired option from each category and place in the appropriate box.

All switches supplied in "OFF" position.



* TDA01H0JB1R is not available, TDA01 only offered in tape & reel



Dimensions are shown: mm

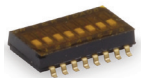
Specifications and dimensions subject to change



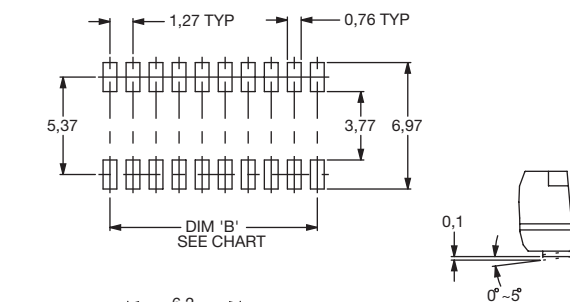
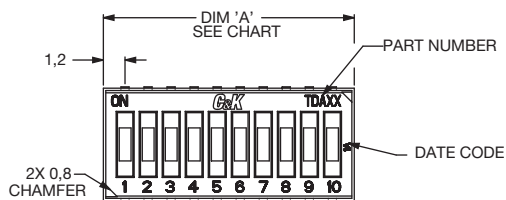
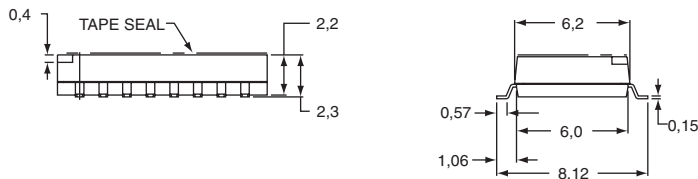
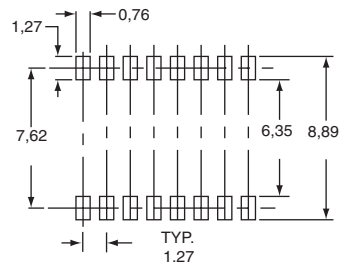
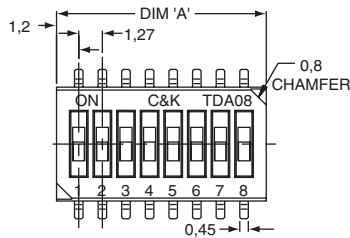
TDA Series Ultra-miniature Surface Mount Half-pitch DIP Switches



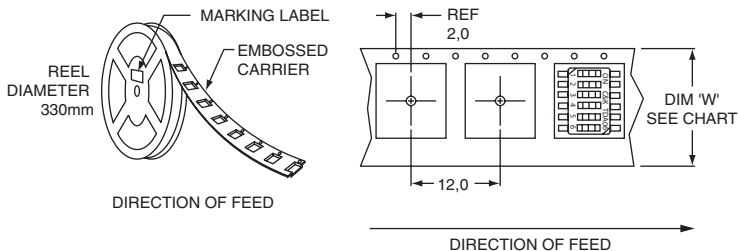
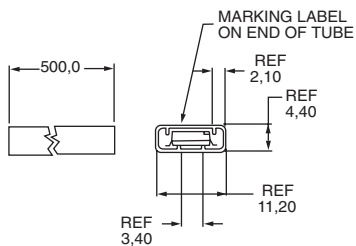
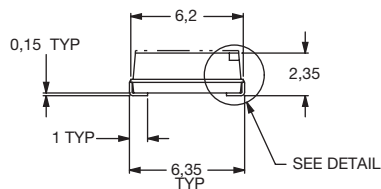
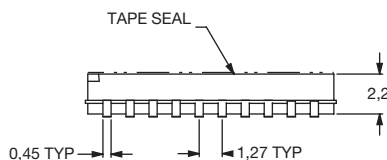
H
DIP



TDA08H0SB1



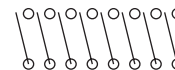
TDA10H0JB1



Tube Package

| ROHS PART NUMBER | NO. POS. | DIM. 'A' | DIM. 'B' | QUANTITY PER TUBE |
|------------------|----------|----------|----------|-------------------|
| TDA01H0SB1 | 1 | 2,40 | NA | NA |
| TDA02H0_B1 | 2 | 3,67 | 1,27 | 125 |
| TDA04H0_B1 | 4 | 6,21 | 3,81 | 70 |
| TDA06H0_B1 | 6 | 8,75 | 6,35 | 50 |
| TDA08H0_B1 | 8 | 11,29 | 8,89 | 40 |
| TDA10H0_B1 | 10 | 13,83 | 11,43 | 30 |

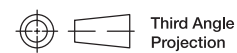
Schematic



Tape & Reel Package

| ROHS PART NUMBER | NO. POS. | DIM. 'W' | QUANTITY PER REEL |
|------------------|----------|----------|-------------------|
| TDA01H0SB1R* | 1 | 16,0 | 2500 |
| TDA02H0_B1R | 2 | 16,0 | 2000 |
| TDA04H0_B1R | 4 | 16,0 | 2000 |
| TDA06H0_B1R | 6 | 16,0 | 2000 |
| TDA08H0_B1R | 8 | 24,0 | 2000 |
| TDA10H0_B1R | 10 | 24,0 | 2000 |

* see next page for TDA01 tape & reel drawing



Dimensions are shown: mm

Specifications and dimensions subject to change



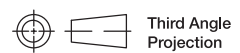
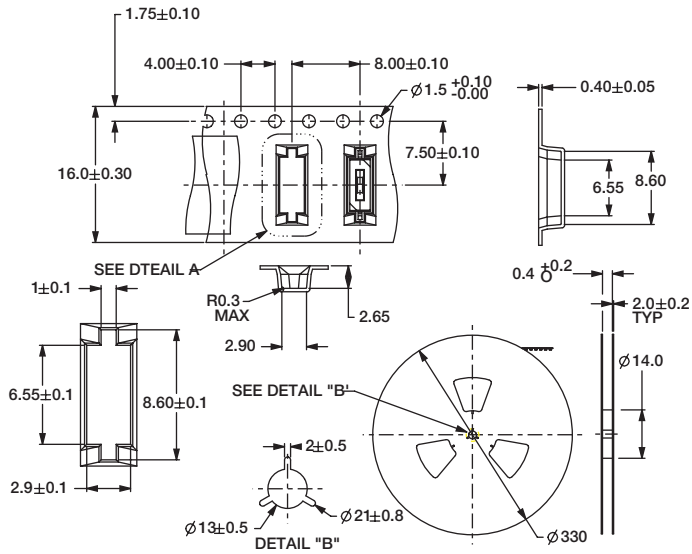
TDA Series Ultra-miniature Surface Mount Half-pitch DIP Switches



DIP I



TDA01H0SB1R



Dimensions are shown: Inch (mm)
Specifications and dimensions subject to change

Mouser Electronics

Authorized Distributor

Click to View Pricing, Inventory, Delivery & Lifecycle Information:

C&K Switches:

[TDA02H0SB1](#) [TDA02H0SB1R](#) [TDA04H0SB1](#) [TDA04H0SB1R](#) [TDA06H0SB1](#) [TDA06H0SB1R](#) [TDA08H0SB1](#)
[TDA08H0SB1R](#) [TDA10H0SB1](#) [TDA10H0SB1R](#) [TDA04H0JB1](#) [TDA01H0SB1R](#) [TDA06H0JB1R](#) [TDA10H0JB1](#)
[TDA08H0JB1](#) [TDA04H0JB1R](#) [TDA02H0JB1R](#) [TDA06H0JB1](#) [TDA10H0JB1R](#) [TDA02H0JB1](#) [TDA08H0JB1R](#)