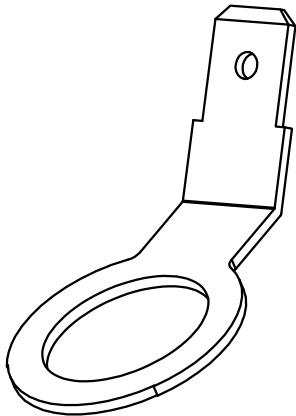
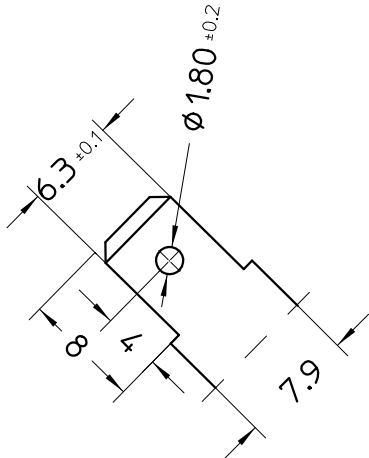
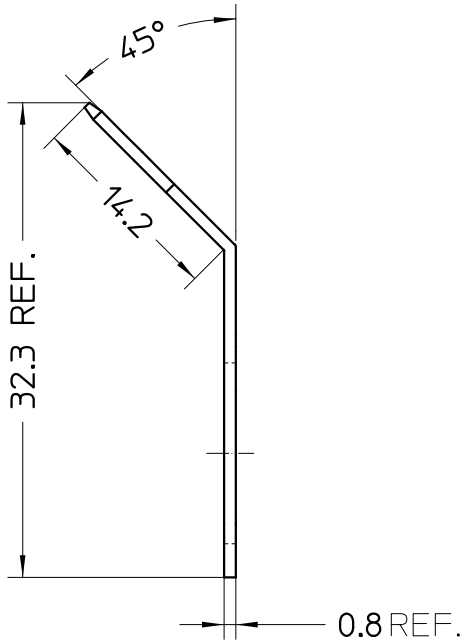
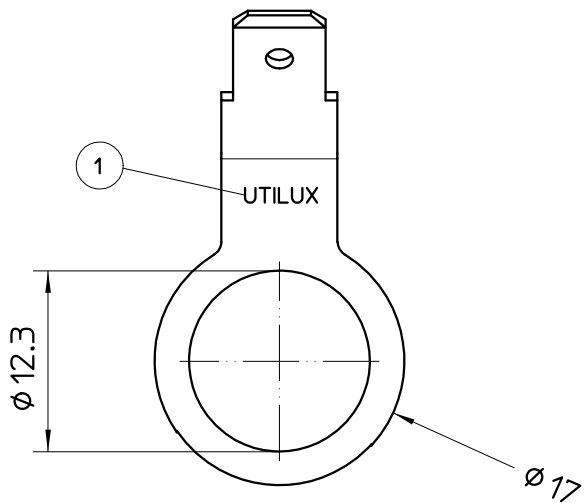


THIS INFORMATION IS CONFIDENTIAL AND PROPRIETARY TO TYCO ELECTRONICS CORPORATION AND ITS WORLDWIDE SUBSIDIARIES AND AFFILIATES. IT MAY NOT BE DISCLOSED TO ANYONE OTHER THAN TYCO ELECTRONICS PERSONNEL WITHOUT WRITTEN AUTHORIZATION FROM TYCO ELECTRONICS CORPORATION, HANOVER, PENNSYLVANIA, USA.

NOTES:
1. UTILUX OR AMP LOGO STAMPED AS REQUIRED.



THIS DRAWING IS A CONTROLLED DOCUMENT.	
ALL DIMENSIONS IN mm:	TOLERANCES UNLESS OTHERWISE SPECIFIED: DIMENSION (mm) TOLERANCE (+/-mm)
	LESS THAN 10 0.4
	OVER 10 TO 30 0.5
	OVER 30 TO 80 0.7
	OVER 80 TO 250 1.0
	ANGLES ±2°
MATERIAL REF. BLOCK	FINISH REF. BLOCK

BRASS, PRE-TIN		TAB QC. 6.3 (H3579)		1-1627156-0	
MATERIAL		DESCRIPTION (UTILUX P/N)		PART No.	
DWN: H.THA1 10.10.06		<div><div><div>tyco</div><div>Electronics</div></div><div>Tyco Electronics Corporation AUSTRALIA</div></div>			
CHK: W.RIEDE 10.10.06					
APVD: W.RIEDE 10.10.06					
PRODUCT SPEC: -					
APPLICATION SPEC: -		NAME: TAB, QC 6.3			
WEIGHT: -					
		SIZE A3	CAGE CODE	DRAWING NO C=1627156	RESTRICTED TO -
CUSTOMER DRAWING			SCALE 2:1	SHEET 1 OF 1	REV 0

Mouser Electronics

Authorized Distributor

Click to View Pricing, Inventory, Delivery & Lifecycle Information:

[TE Connectivity:](#)

[1-1627156-0](#)