

A

B

C

D

A

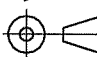

B

C

D

## Configuration of customer Documents list

P/N	Documents	No.	Title
SLW__R/S-1C7ALF	SPEC	SC-SLW05	
	DWG	SHEET2	CAT NO. TABLE FOR 1mm SPACING CONNECTOR
		SHEET3	1mm SPACING CONNECTOR
		SHEET4	1mm SPACING CONNECTOR
	CABLE	SHEET5	RECOMMENDED CABLE

mat'l. code				surface ISO 1302 <input checked="" type="checkbox"/> ISO 406 ISO 1101		tolerance ISO 406 ISO 1101		projection 		product family 58JF/TF		CODE JP	
ltr	ecn no	dr	date	tolerances unless otherwise specified		mm		scale $\times$		title 1mm SPACING CONNECTOR DOCUMENT LIST (Cat. No. SLW__R/S-1C7ALF)			
A	J11-220	S.W	2011-10-11	angles	linear								
				dr	<i>S. Withler</i>	2011-10-11			dwg no		sheet 1 of 5	size	
				enrg	<i>S. Withler</i>	2011-10-11			10118640		A4		
				chr	<i>S. Withler</i>	2011-10-11							
				appd	<i>S. Withler</i>	Oct 11/11							
sheet index	revision sheet	A	A	A	A	A	A						Rev. A

## CAT. NO. &amp; DIMENSIONS

NO. OF CONTACTS (n)	CAT. NO.		DIMENSIONS (NOTE1)	
	RIGHT ANGLE TYPE	STRAIGHT TYPE	A ± 0.3	B ± 0.3
4	SLW 4R-1C7ALF	SLW 4S-1C7ALF	10.2	5.2
5	SLW 5R-1C7ALF	SLW 5S-1C7ALF	11.2	6.2
6	SLW 6R-1C7ALF	SLW 6S-1C7ALF	12.2	7.2
7	SLW 7R-1C7ALF	SLW 7S-1C7ALF	13.2	8.2
8	SLW 8R-1C7ALF	SLW 8S-1C7ALF	14.2	9.2
9	SLW 9R-1C7ALF	SLW 9S-1C7ALF	15.2	10.2
10	SLW10R-1C7ALF	SLW10S-1C7ALF	16.2	11.2
11	SLW11R-1C7ALF	SLW11S-1C7ALF	17.2	12.2
12	SLW12R-1C7ALF	SLW12S-1C7ALF	18.2	13.2
13	SLW13R-1C7ALF	SLW13S-1C7ALF	19.2	14.2
14	SLW14R-1C7ALF	SLW14S-1C7ALF	20.2	15.2
15	SLW15R-1C7ALF	SLW15S-1C7ALF	21.2	16.2
16	SLW16R-1C7ALF	SLW16S-1C7ALF	22.2	17.2
17	SLW17R-1C7ALF	SLW17S-1C7ALF	23.2	18.2
18	SLW18R-1C7ALF	SLW18S-1C7ALF	24.2	19.2
19	SLW19R-1C7ALF	SLW19S-1C7ALF	25.2	20.2
20	SLW20R-1C7ALF	SLW20S-1C7ALF	26.2	21.2
21	SLW21R-1C7ALF	SLW21S-1C7ALF	27.2	22.2
22	SLW22R-1C7ALF	SLW22S-1C7ALF	28.2	23.2
23	SLW23R-1C7ALF	SLW23S-1C7ALF	29.2	24.2
24	SLW24R-1C7ALF	SLW24S-1C7ALF	30.2	25.2
25	SLW25R-1C7ALF	SLW25S-1C7ALF	31.2	26.2
26	SLW26R-1C7ALF	SLW26S-1C7ALF	32.2	27.2
27	SLW27R-1C7ALF	SLW27S-1C7ALF	33.2	28.2
28	SLW28R-1C7ALF	SLW28S-1C7ALF	34.2	29.2
29	SLW29R-1C7ALF	SLW29S-1C7ALF	35.2	30.2
30	SLW30R-1C7ALF	SLW30S-1C7ALF	36.2	31.2

CAT. NO. SLW (n) R -1C7 A LF

SERIES NAME \_\_\_\_\_

NO. OF CONTACTS \_\_\_\_\_

R : RIGHT ANGLE TYPE \_\_\_\_\_

S : STRAIGHT TYPE \_\_\_\_\_

VARIATION \_\_\_\_\_

SELECTIVE GOLD PLATING \_\_\_\_\_

CONTACT AREA : GOLD FLASH

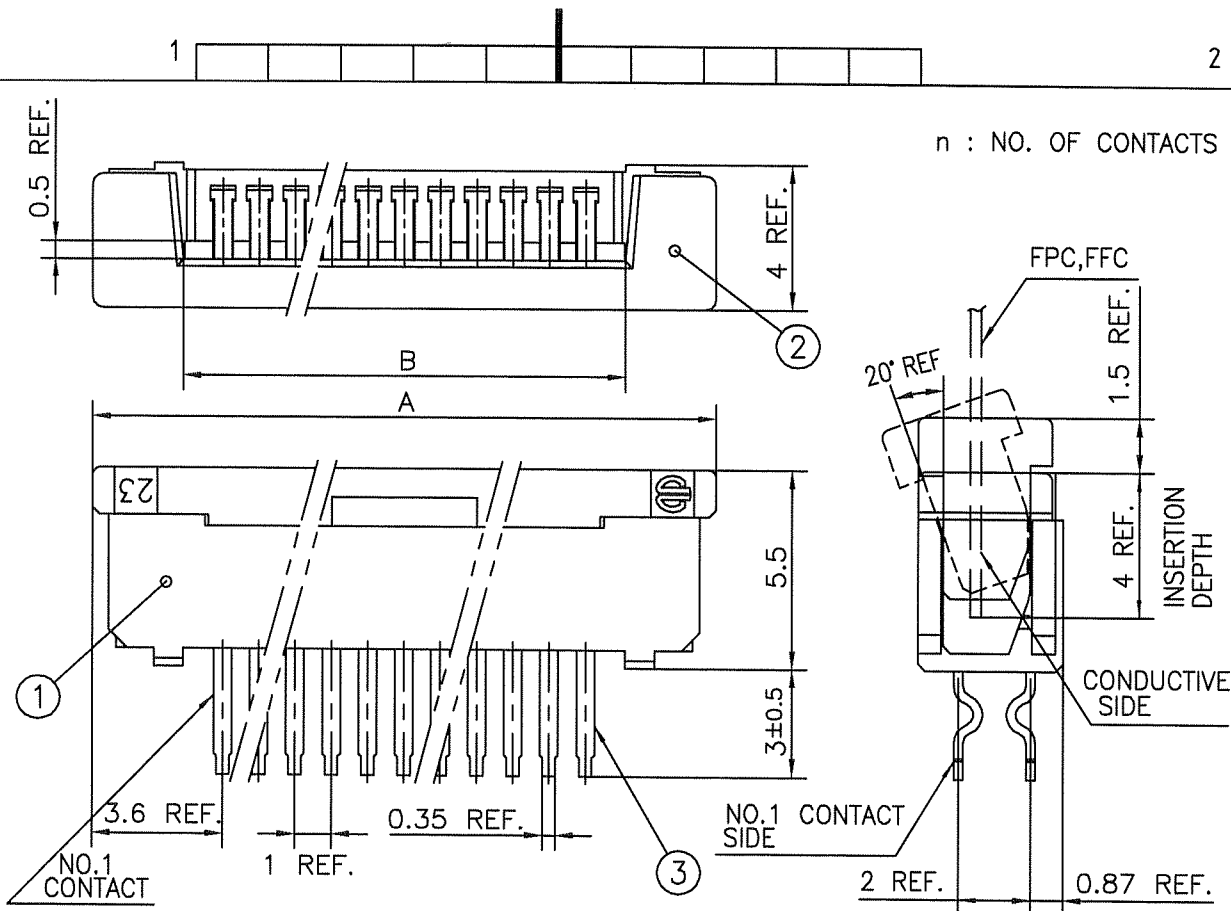
TERMINAL AREA : PURE TIN

LEAD FREE \_\_\_\_\_

## NOTE

1. SEE PART DRAWINGS FOR DIMENSIONS A,B.

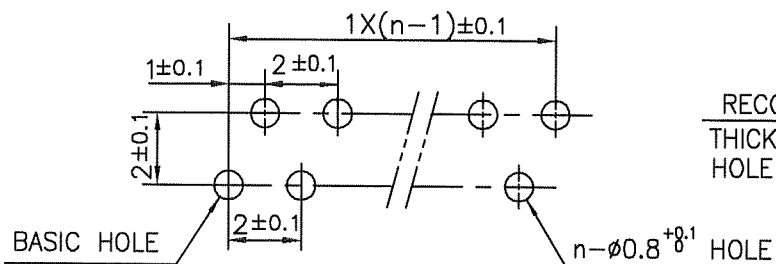
mat'l. code				surface <input checked="" type="checkbox"/> ISO 1302 <input type="checkbox"/> ISO 406 <input type="checkbox"/> ISO 1101		tolerance		projection		product family 58JF/TF		CODE JP	
ltr				ecn no		dr		date		title		CAT NO. TABLE FOR 1mm SPACING CONNECTOR (Cat. No. SLW__R/S-1C7ALF)	
A										mm			
				angles		linear		scale X		dwg no		sheet 2 of 5 size	
				dr		S. Nishida 2011-10-11		FCI		10118640		A4	
				engr		S. Nishida 2011-10-11				type		Product Customer Drawing	
				chr		S. Nishida 2011-10-11							
				appd		M. Nishida 08/11/11							
sheet index		revision sheet										Rev. A	



1. THIS PRODUCT MEETS EUROPEAN UNION DIRECTIVES AND OTHER COUNTRY REGULATIONS AS DESCRIBED IN GS-22-008

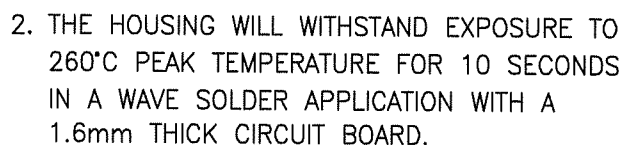
2. THE HOUSING WILL WITHSTAND EXPOSURE TO 260°C PEAK TEMPERATURE FOR 10 SECONDS IN A WAVE SOLDER APPLICATION WITH A 1.6mm THICK CIRCUIT BOARD.

PT.NO.	PARTS NAME	MATERIAL	Q'TY	NOTE
1	HOUSING	NYLON RESIN GLASS REINFORCED (UL94V-0)	1	COLOR : BLACK
2	SLIDER		1	
3	CONTACT	PHOSPHOR BRONZE	n	PLATING CONTACT AREA : GOLD FLASH TERMINAL AREA : PURE TIN

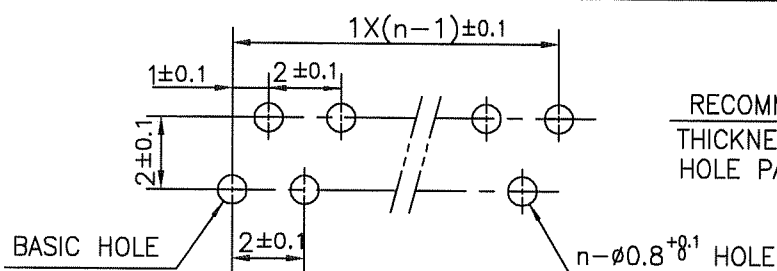


RECOMMENDED PC BOARD  
THICKNESS : 0.8~1.6  
HOLE PATTERN (COMPONENT SIDE)

mat'l. code				surface ISO 1302 ✓		tolerance ISO 406 ISO 1101		projection mm		product family 58JF		CODE JP	
ltr	ecn no	dr	date	tolerances unless otherwise specified		± 0.3		mm		title 1mm SPACING CONNECTOR (Cat. No. SLW__S-1C7ALF)			
A				angles	linear			scale		dwg no 10118640		sheet 3 of 5 size A4	
				dr	2011-10-11		FCJ		type		Product Customer Drawing		
				engr	2011-10-11								
				chr	2011-10-11								
				appd	2011-10-11								
sheet index	revision sheet											Rev. A	



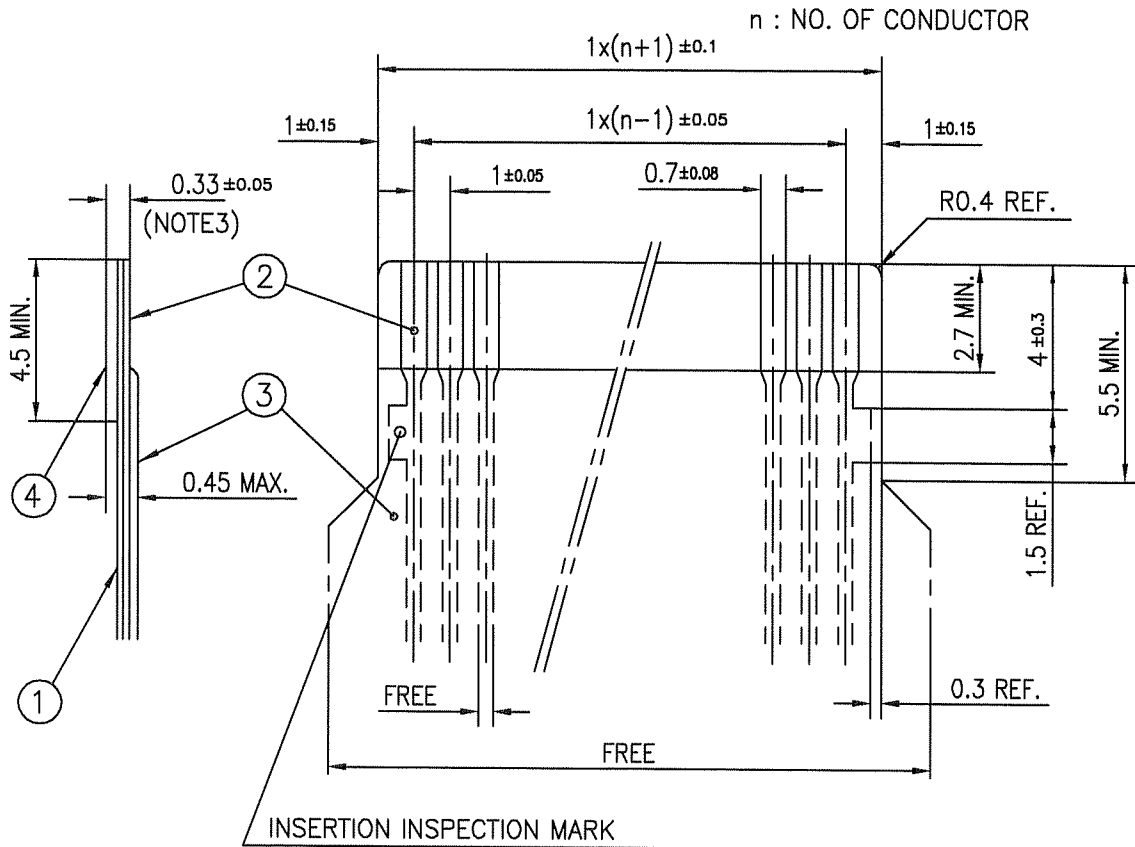
PT.NO.	PARTS NAME	MATERIAL	Q'TY	NOTE
1	HOUSING	NYLON RESIN GLASS REINFORCED (UL94V-0)	1	COLOR : BLACK
2	SLIDER		1	
3	CONTACT	PHOSPHOR BRONZE	n	PLATING CONTACT AREA : GOLD FLASH TERMINAL AREA : PURE TIN



RECOMMENDED PC BOARD  
THICKNESS : 0.8~1.6  
HOLE PATTERN (COMPONENT SIDE)

mat'l. code				surface ISO 1302 ✓		tolerance ISO 406 ISO 1101		projection 		product family 58TF				CODE JP	
ltr	ecn no	dr	date	tolerances, unless otherwise specified						title 1mm SPACING CONNECTOR (Cat. No. SLW__R-1C7ALF)					
A				angles	linear	±0.3		mm 							
								scale $\times$							
				dr	<i>S. W. H. L.</i>	2011-10-11									
			engr	<i>S. W. H. L.</i>	2011-10-11										
			chr	<i>P. H. S. H. L.</i>	2011-10-11										
			appd	<i>M. G. L. L.</i>	2011-11-11										
sheet index		revision sheet								type		Product Customer Drawing		Rev. A	

## RECOMMENDED CABLE (FPC)



PT. NO.	PARTS NAME	MATERIAL	THICKNESS (μm)
1	BASE FILM	POLYIMIDE OR POLYESTER OR EQUAL	25
2	CONDUCTOR	COPPER FOIL(PLATING : GOLD 0.25μm MIN.)	35
3	OVERLAY	POLYIMIDE OR POLYESTER OR EQUAL	—
4	SUPPORTING TAPE	POLYESTER OR POLYIMIDE OR EQUAL	188

## NOTES

1. NO BURR AT EACH PORTION.
2. NO PEELING IN COMMON USE.
3. TOTAL THICKNESS LIMIT OF EACH MATERIAL (INCLUDING ADHESIVE AGENT) IS SPECIFIED.

mat'l. code				surface ISO 1302		tolerance ISO 406 ISO 1101		projection mm		product family 58JF/TF		CODE JP	
ltr				ecn no		dr		date		title			
A										RECOMMENDED CABLE (Cat. No. SLW__R/S-1C7ALF)			
				angles		linear		scale		dwg no		sheet 5 of 5	
								mm		10118640		size A4	
								scale		type		Product Customer Drawing	
								scale		type		Product Customer Drawing	
sheet index				revision sheet								Rev. A	

# Mouser Electronics

Authorized Distributor

Click to View Pricing, Inventory, Delivery & Lifecycle Information:

[FCI / Amphenol:](#)

[SLW4R-1C7ALF](#) [SLW11R-1C7ALF](#)