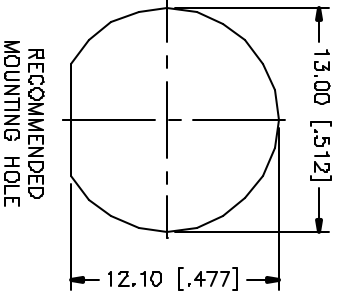
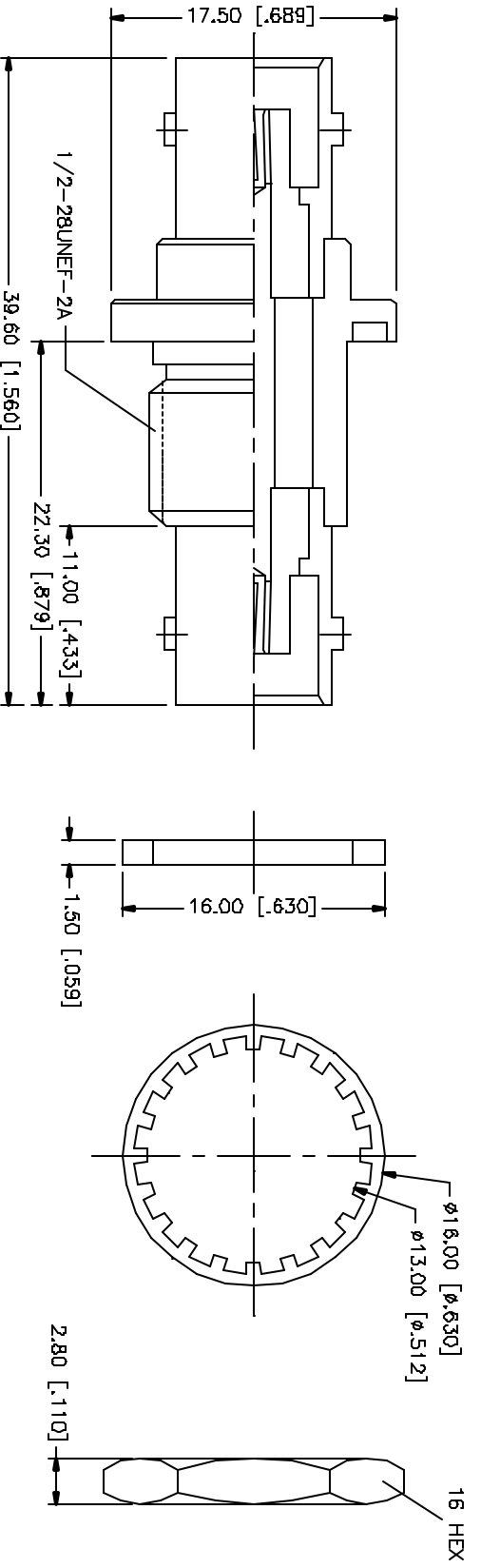


REV.	DATE	DESCRIPTION
NC	05/01/04	INITIAL RELEASE



NOTE:
 1. MAX. PANEL THICKNESS = 7mm

QTY	FINISH	MATERIAL	DESCRIPTION
1	NICKEL	BRASS	HOUSING/BOOBY
1	NATURAL	DELFIN	INSULATOR
1	COLD	PHOS. BRONZE	CONTACT PIN
1	RED	RUBBER	GASKET
1	NICKEL	BRASS	LOCK WASHER
1	NICKEL	BRASS	HEX NUT

APPROVALS	DATE
DRWN G.R.S.	05/01/04
CHECKED	
ISSUED	
SHEET 1 OF 1	

PART NO.	DWG. NO.	REV.	SIZE	SCALE
112434	112434.DWG	NC	A	NA

UNLESS OTHERWISE SPECIFIED DIMENSIONS ARE IN MILLIMETERS AND DECIMALS THEREOF. DIMENSIONS FOR MILLIMETERS ARE: 0.15 - 30mm ± 0.20mm 30 - 120mm ± 0.40mm 120 - 150mm ± 0.50mm UNLESS OTHERWISE SPECIFIED DIMENSIONS FOR INCHES ARE: .020 - .315 = ± 0.007" .315 - 1.180 = ± 0.015" 1.180 - 4.724 = ± 0.020" DO NOT SCALE DRAWINGS

Amphenol Connex
 BNC FEMALE TO FEMALE BULKHEAD ADAPTER

Mouser Electronics

Authorized Distributor

Click to View Pricing, Inventory, Delivery & Lifecycle Information:

[Amphenol:](#)

[112434](#)