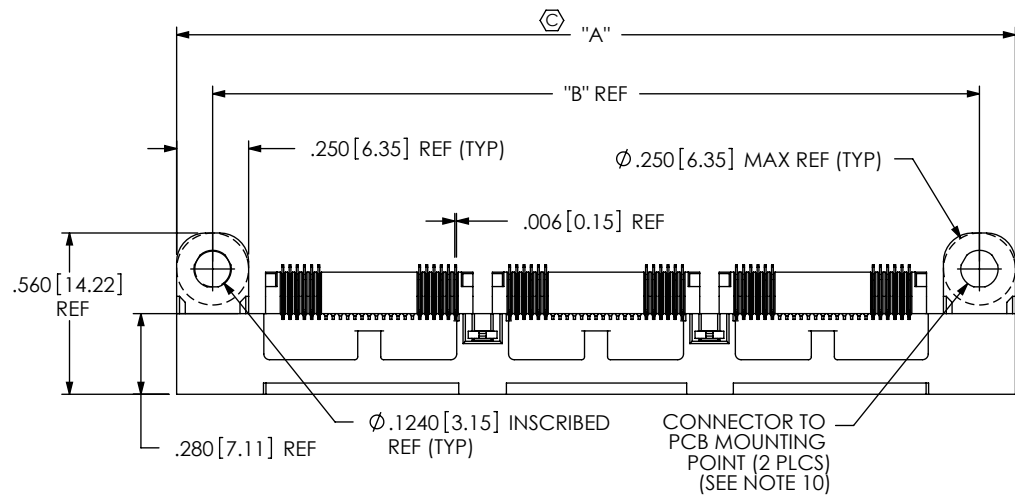


DO NOT SCALE FROM THIS PRINT

QSS-XXX-XX-XXX-D-RA-XX-XXX



No OF POSITIONS
 -025, -050, -075, *-100
 (PER ROW)
 (SEE NOTE 4)
 *(SEE NOTE 12)

LEAD STYLE
 -01: .062 BOARD
 -02: .093 BOARD

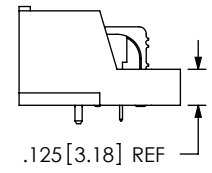
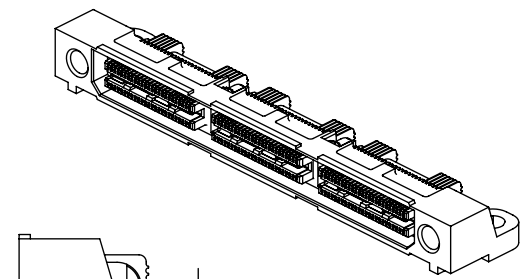
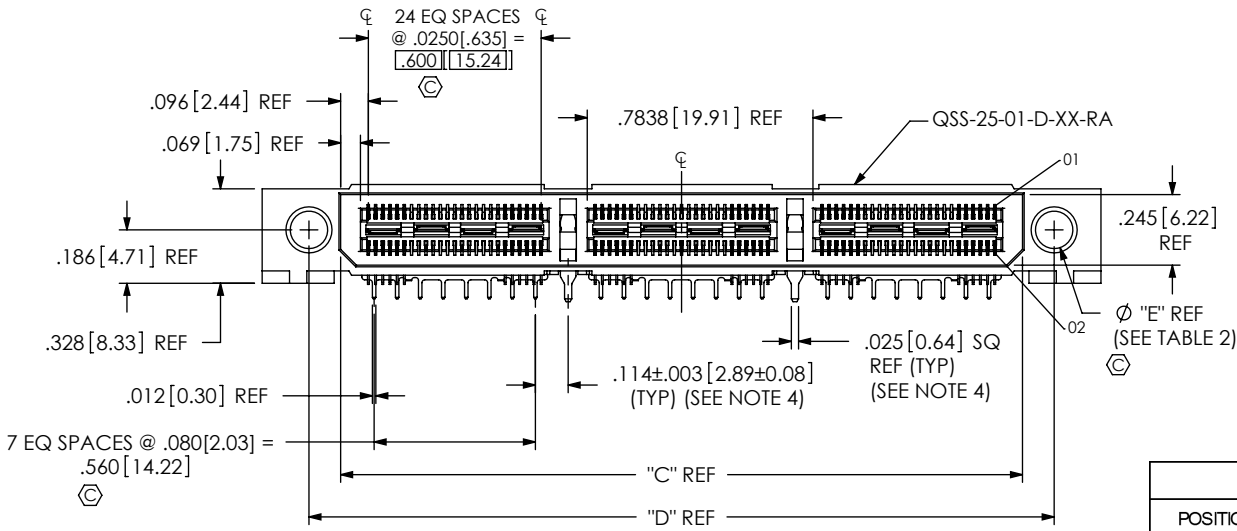
PLATING SPECIFICATION
 SEE TABLE 8, SHEET 6

ROW SPECIFICATION
 -D: DOUBLE
 (USE QSS-25-01-D-XX-RA)

-RA: RIGHT ANGLE

OPTION
 -LS1: LOCKING SCREW
 (SEE FIG 2, SHT 4)
 (FOR MATING WITH
 QTS-...-RA-..LS1)
 -MTI: THREADED INSERT
 (NOT AVAILABLE
 W/ LS1 OPTION)
 (SEE FIG 5, SHT 6)
 -SP: SOLDER PIN
 (NOT AVAILABLE
 W/LS1 OPTION)
 (USE SP-19-T)
 (SEE FIG 3, SHT 5)
 -K: KAPTON PAD
 (SEE FIG 4, SHT 5)
 (USE K-500-300)

-WT: WELD TAB
 (SEE NOTE 4)
 (USE WT-16-XX-T)



MOUNTING OPTION	"E" HOLE DIA
STANDARD	.130 [3.30]
-LS1	.0625 [1.588]

POSITION	"A"	"B"	"C"	"D"
-025	1.338 [33.97]	1.088 [27.62]	0.793 [20.13]	1.013 [25.72]
-050	2.125 [53.98]	1.875 [47.63]	1.580 [40.13]	1.800 [45.72]
-075	2.913 [73.98]	2.663 [67.63]	2.368 [60.13]	2.588 [65.72]
*-100	3.700 [93.98]	3.450 [87.63]	3.155 [80.14]	3.375 [85.73]

* = SEE NOTE 12

NOTES:

1. Ⓢ REPRESENTS A CRITICAL DIMENSION.
2. BURR ALLOWANCE: .0010 MAX.
3. MINIMUM PUSHOUT FORCE: 6 OZ.
4. WELD TABS (WT-16-XX-T) NOT AVAILABLE ON -025 POSITION. WT OPTION MUST BE SELECTED FOR -050, -075 & -100 POSITIONS.
5. IF NEEDED, -L PLATING CAN BE SUBSTITUTED FOR -F PLATING.
6. IM-1G18-XX-1-XX RETENTION TO BE 1.0 LBS. MINIMUM PRIOR TO SECOND ROW FILL.
7. DESIGNED FOR USE WITH A .062 OR .093 THICK PCB
8. ASSEMBLIES TO BE PACKAGED IN TRAYS.
9. NOTE DELETED
10. TORQUE TO BE 10.0 IN-OZ USING 4-40 UNC SCREW.
11. USE -Z- DATUM ZONE ONLY FOR MEASUREMENTS.
12. AVAILABLE FOR EXISTING CUSTOMERS ONLY.

FIG 1
 QSS-075-01-XXX-D-RA-WT SHOWN
 (SOME CENTER DETAILS REMOVED FOR CLARITY)

UNLESS OTHERWISE SPECIFIED, DIMENSIONS ARE IN INCHES. TOLERANCES ARE: DECIMALS ANGLES .XX: ±.01 [.3] 2° .XXX: ±.005 [.13] .XXXX: ±.0020 [.051]	* PROPRIETARY NOTE * THIS DOCUMENT CONTAINS CONFIDENTIAL AND PROPRIETARY INFORMATION AND ALL DESIGN, MANUFACTURING, REPRODUCTION, USE, PATENT RIGHTS AND SALES RIGHTS ARE EXPRESSLY RESERVED BY SAMTEC, INC. THIS DOCUMENT SHALL NOT BE DISCLOSED, IN WHOLE OR PART, TO ANY UNAUTHORIZED PERSON OR ENTITY NOR REPRODUCED, TRANSFERRED OR INCORPORATED IN ANY OTHER PROJECT IN ANY MANNER WITHOUT THE EXPRESS WRITTEN CONSENT OF SAMTEC, INC.	520 PARK EAST BLVD, NEW ALBANY, IN 47150 PHONE: 812-944-6733 FAX: 812-948-5047 e-Mail: info@SAMTEC.com code 55322

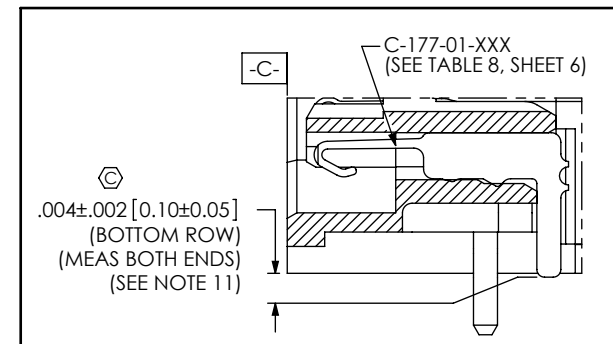
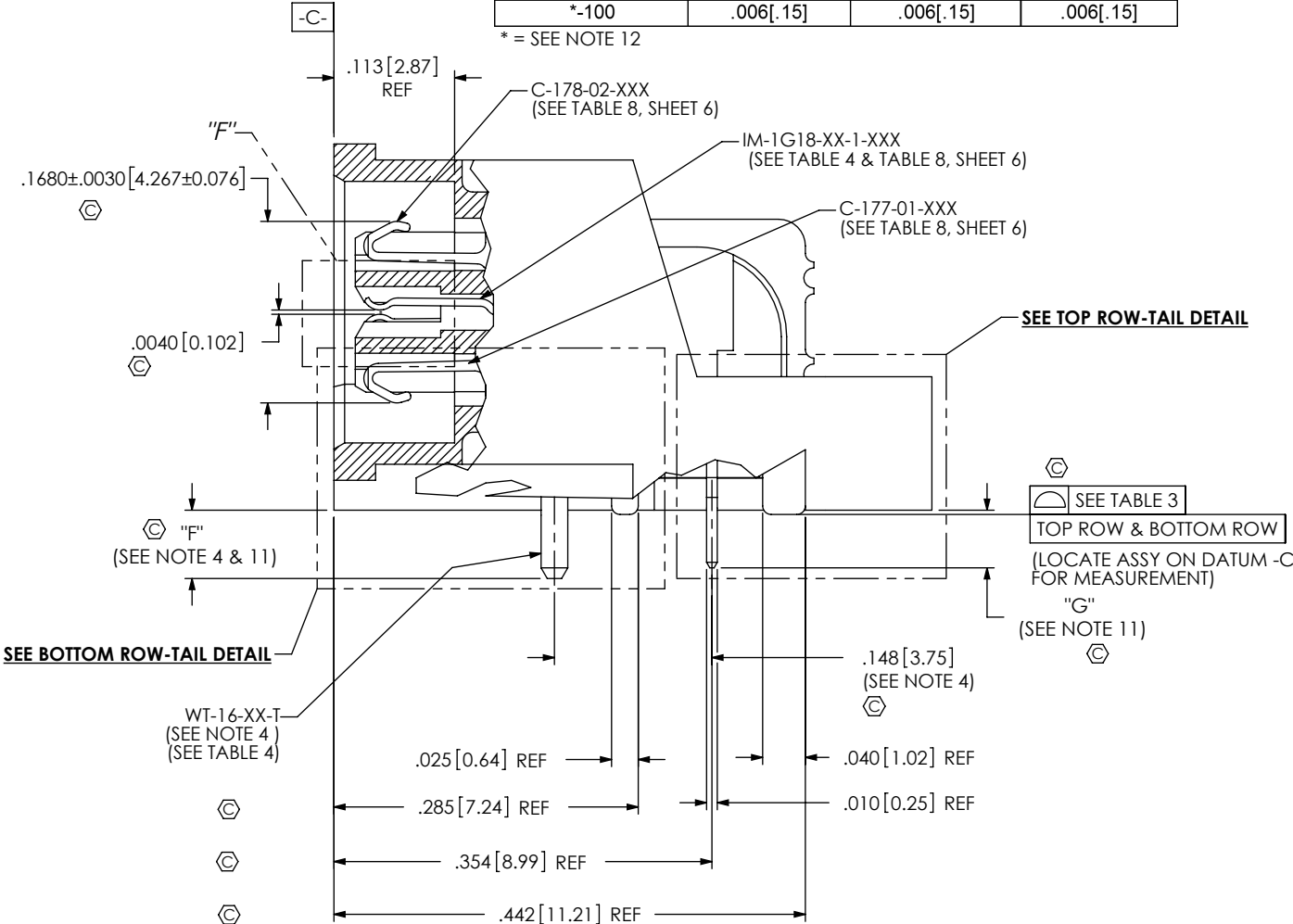
TABLE 3

No OF POSITIONS	COPLANARITY	STRAIGHTNESS ROW 1	STRAIGHTNESS ROW 2
-025 THRU -075	.004[.10]	.004[.10]	.004[.10]
*-100	.006[.15]	.006[.15]	.006[.15]

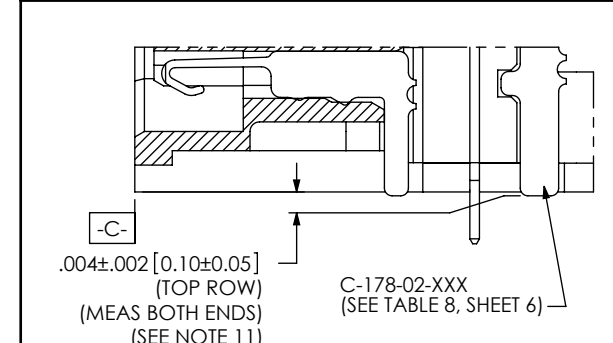
* = SEE NOTE 12

TABLE 4

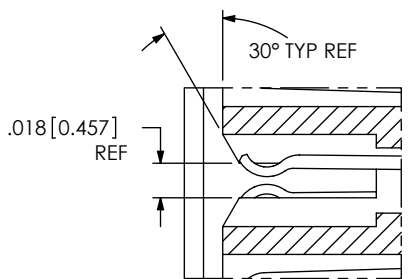
LEADSTYLE	"F"	"G"	IM-1G18-XX-1-XXX	WT-16-XX-T
-01	0.064 [1.63]	0.058 [1.47]	IM-1G18-01-1-XXX	WT-16-02-T
-02	0.125 [3.18]	0.125 [3.18]	IM-1G18-02-1-XXX	WT-16-04-T



BOTTOM ROW - TAIL DETAIL
(LOCATE ASSEMBLY ON DATUM -C- FOR MEASUREMENT)



TOP ROW - TAIL DETAIL
(LOCATE ASSEMBLY ON DATUM -C- FOR MEASUREMENT)



DETAIL "F"
SCALE 10:1

PROPRIETARY NOTE
 THIS DOCUMENT CONTAINS CONFIDENTIAL AND PROPRIETARY INFORMATION AND ALL DESIGN, MANUFACTURING, REPRODUCTION, USE, PATENT RIGHTS AND SALES RIGHTS ARE EXPRESSLY RESERVED BY SAMTEC, INC. THIS DOCUMENT SHALL NOT BE DISCLOSED, IN WHOLE OR PART, TO ANY UNAUTHORIZED PERSON OR ENTITY NOR REPRODUCED, TRANSFERRED OR INCORPORATED IN ANY OTHER PROJECT IN ANY MANNER WITHOUT THE EXPRESS WRITTEN CONSENT OF SAMTEC, INC.

DO NOT SCALE DRAWING
 SHEET SCALE: 6:1



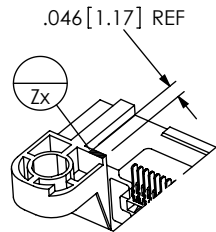
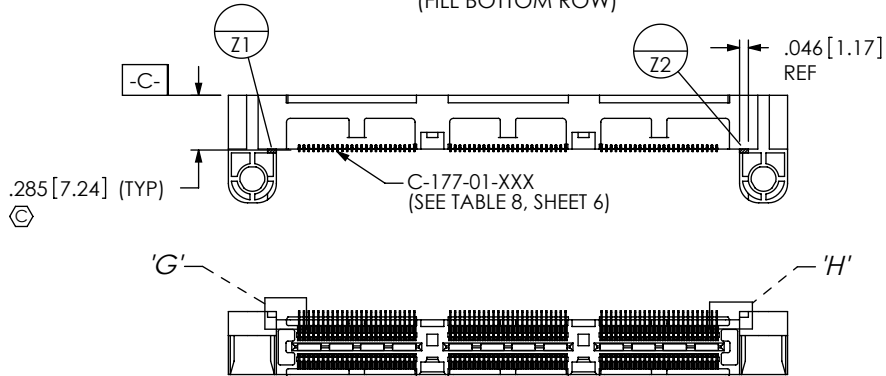
520 PARK EAST BLVD, NEW ALBANY, IN 47150
 PHONE: 812-944-6733 FAX: 812-948-5047
 e-Mail: info@SAMTEC.com code 55322

DESCRIPTION:
 .635mm DOUBLE ROW RIGHT ANGLE SOCKET STRIP

DWG. NO.
QSS-XXX-XX-XXX-D-RA-XX-XXX

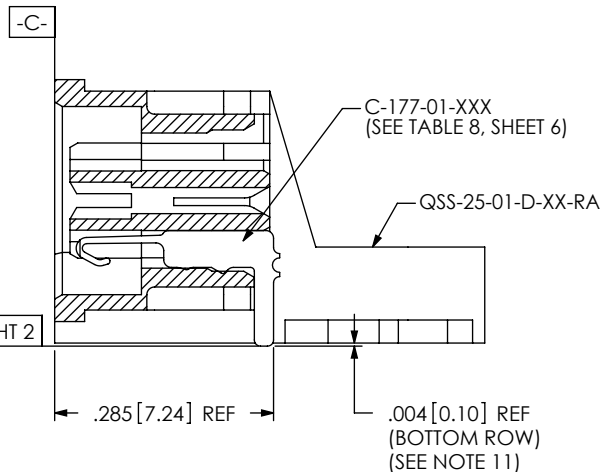
BY: KEVIN B 01/22/02 SHEET 2 OF 6

INSPECTION VIEW 1
(FILL BOTTOM ROW)



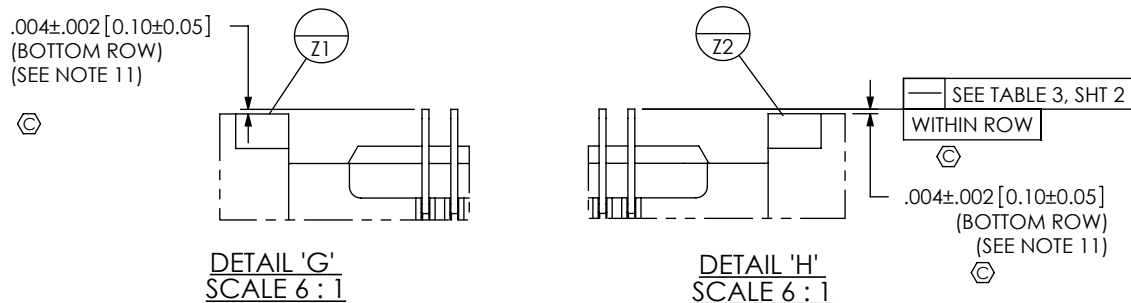
**ISO VIEW OF
-Z- DATUM ZONE**

SEE TABLE 3, SHT 2
WITHIN ROW

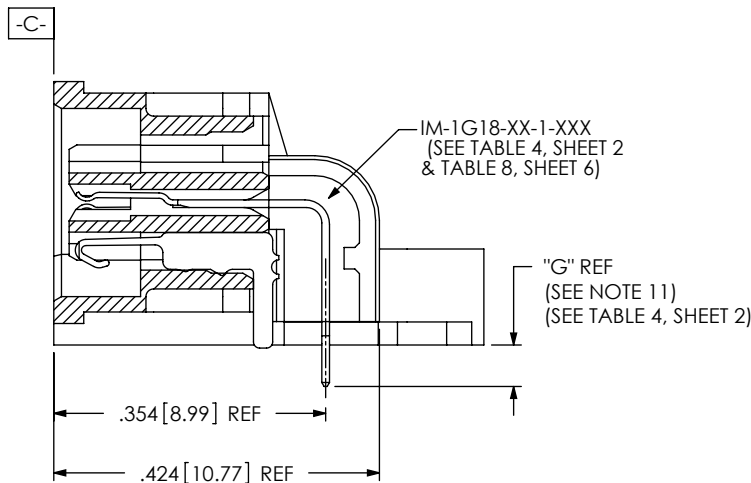
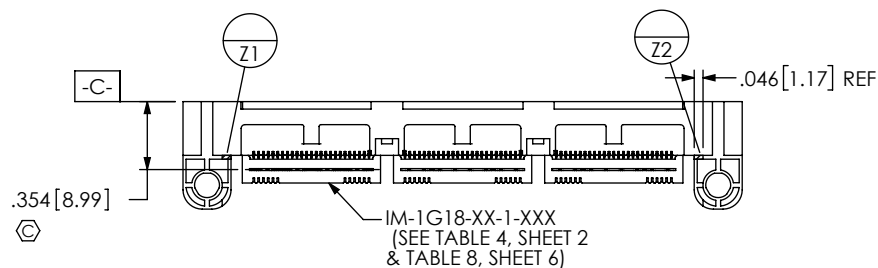


IN-PROCESS 1
(FILL BOTTOM ROW)
(SEE INSPECTION VIEW 1 FOR ORIENTATION AND CPC'S)

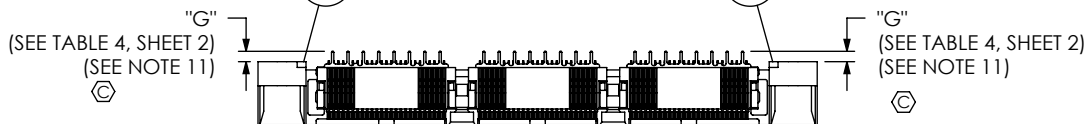
.004±.002 [0.10±0.05]
(BOTTOM ROW)
(SEE NOTE 11)



INSPECTION VIEW 2
(FILL IM-1G18)



IN-PROCESS 2
(FILL IM-1G18)
(SEE INSPECTION VIEW 2 FOR ORIENTATION AND CPC'S)



PROPRIETARY NOTE
THIS DOCUMENT CONTAINS CONFIDENTIAL AND PROPRIETARY INFORMATION AND ALL DESIGN, MANUFACTURING, REPRODUCTION, USE, PATENT RIGHTS AND SALES RIGHTS ARE EXPRESSLY RESERVED BY SAMTEC, INC. THIS DOCUMENT SHALL NOT BE DISCLOSED, IN WHOLE OR PART, TO ANY UNAUTHORIZED PERSON OR ENTITY NOR REPRODUCED, TRANSFERRED OR INCORPORATED IN ANY OTHER PROJECT IN ANY MANNER WITHOUT THE EXPRESS WRITTEN CONSENT OF SAMTEC, INC.

DO NOT SCALE DRAWING
SHEET SCALE: 1.5:1



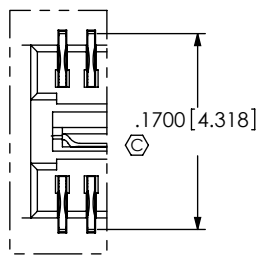
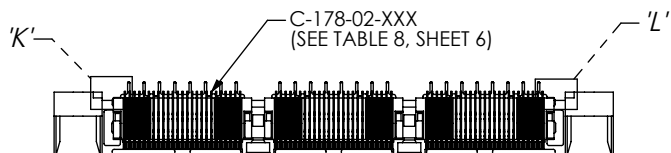
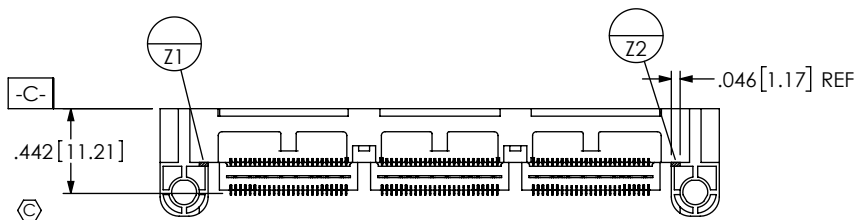
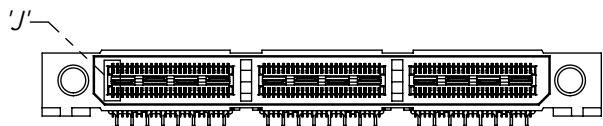
520 PARK EAST BLVD, NEW ALBANY, IN 47150
PHONE: 812-944-6733 FAX: 812-948-5047
e-Mail info@SAMTEC.com code 55322

DESCRIPTION:
.635mm DOUBLE ROW RIGHT ANGLE SOCKET STRIP

DWG. NO.
QSS-XXX-XX-XXX-D-RA-XX-XXX

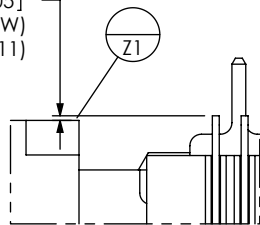
BY: KEVIN B 01/22/02 SHEET 3 OF 6

INSPECTION VIEW 3
(FILL TOP ROW)

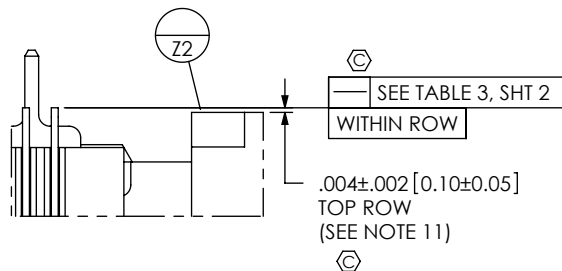


DETAIL 'J'
SCALE 6 : 1

$.004 \pm .002 [0.10 \pm 0.05]$
(TOP ROW)
(SEE NOTE 11)



DETAIL 'K'
SCALE 6 : 1



DETAIL 'L'
SCALE 6 : 1

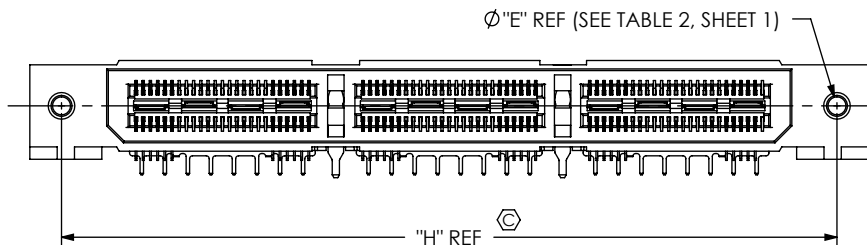
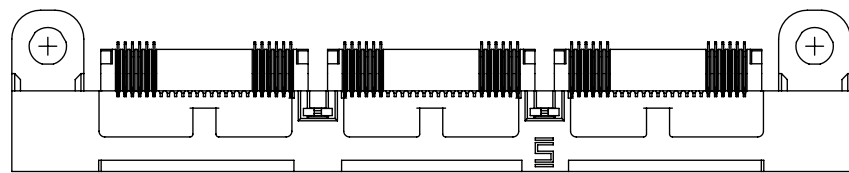
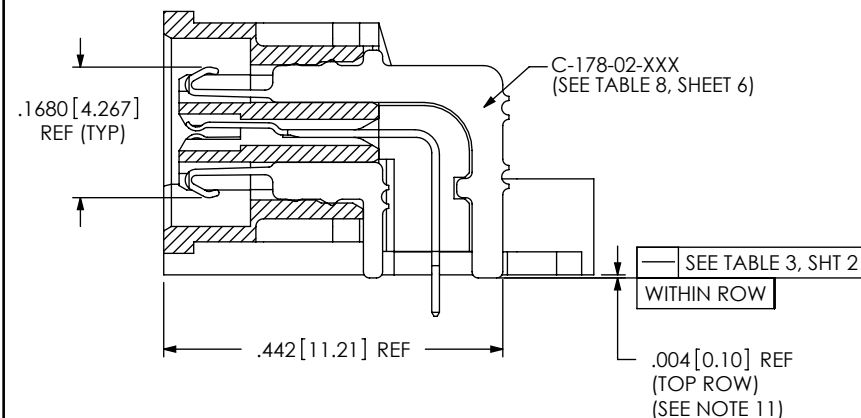


FIG 2

QSS-075-01-XXX-D-RA-WT-LS1 SHOWN
(SAME AS FIG. 1, EXCEPT AS SHOWN)
(SOME CENTER DETAILS REMOVED FOR CLARITY)

TABLE 5	
POSITION	"H"
-025	1.118 [28.38]
-050	1.905 [48.39]
-075	2.693 [68.39]
*-100	3.480 [88.39]

* = SEE NOTE 12



IN-PROCESS 3
(FILL TOP ROW)

(SEE INSPECTION VIEW 3 FOR ORIENTATION AND CPC'S)

PROPRIETARY NOTE

THIS DOCUMENT CONTAINS CONFIDENTIAL AND PROPRIETARY INFORMATION AND ALL DESIGN, MANUFACTURING, REPRODUCTION, USE, PATENT RIGHTS AND SALES RIGHTS ARE EXPRESSLY RESERVED BY SAMTEC, INC. THIS DOCUMENT SHALL NOT BE DISCLOSED, IN WHOLE OR PART, TO ANY UNAUTHORIZED PERSON OR ENTITY NOR REPRODUCED, TRANSFERRED OR INCORPORATED IN ANY OTHER PROJECT IN ANY MANNER WITHOUT THE EXPRESS WRITTEN CONSENT OF SAMTEC, INC.

DO NOT SCALE DRAWING

SHEET SCALE: 1.5:1



520 PARK EAST BLVD. NEW ALBANY, IN 47150
PHONE: 812-944-6733 FAX: 812-948-5047
e-Mail: info@SAMTEC.com code 55322

DESCRIPTION:
.635mm DOUBLE ROW RIGHT ANGLE SOCKET STRIP

DWG. NO.
QSS-XXX-XX-XXX-D-RA-XX-XXX

BY: KEVIN B 01/22/02 SHEET 4 OF 6

FIG 3
 QSS-075-01-XXX-D-RA-WT-SP SHOWN
 (SAME AS FIG. 1, EXCEPT AS SHOWN)
 (NOT AVAILABLE WITH LS1 OPTION)
 (SOME CENTER DETAILS REMOVED FOR CLARITY)

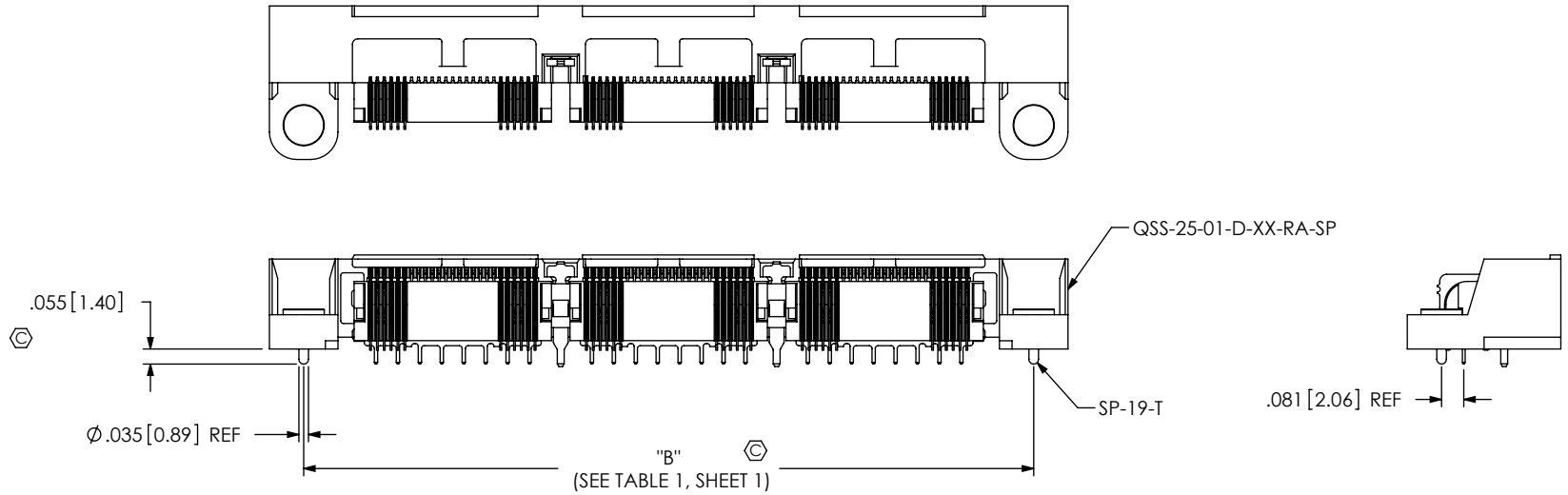


FIG 4
 -K OPTION
 QSS-075-01-XXX-D-RA-WT-K SHOWN
 (SAME AS FIG. 1, EXCEPT AS SHOWN)
 (SOME CENTER DETAILS REMOVED FOR CLARITY)

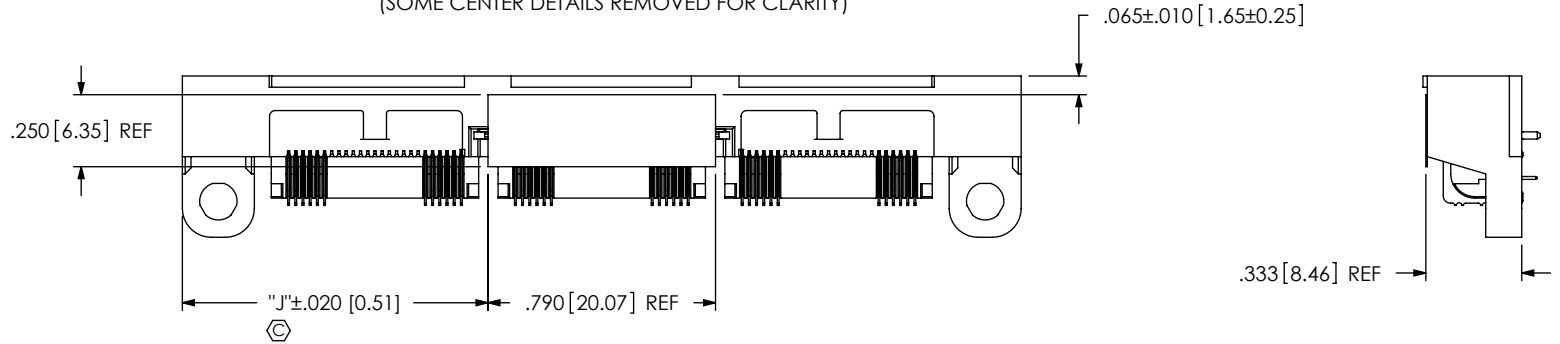


TABLE 6

No OF POS	"J"	"J" - MTI OPTION
-25	0.274 [6.95]	0.472 [12.00]
-50	0.668 [16.95]	0.866 [22.00]
-75	1.061 [26.96]	1.260 [32.00]
*-100	1.455 [36.96]	1.654 [42.00]

* = SEE NOTE 12

PROPRIETARY NOTE
 * THIS DOCUMENT CONTAINS CONFIDENTIAL AND PROPRIETARY INFORMATION AND ALL DESIGN, MANUFACTURING, REPRODUCTION, USE, PATENT RIGHTS AND SALES RIGHTS ARE EXPRESSLY RESERVED BY SAMTEC INC. THIS DOCUMENT SHALL NOT BE DISCLOSED, IN WHOLE OR PART, TO ANY UNAUTHORIZED PERSON OR ENTITY NOR REPRODUCED, TRANSFERRED OR INCORPORATED IN ANY OTHER PROJECT IN ANY MANNER WITHOUT THE EXPRESS WRITTEN CONSENT OF SAMTEC, INC.

DO NOT SCALE DRAWING

SHEET SCALE: 1:0.666667



520 PARK EAST BLVD, NEW ALBANY, IN 47150
 PHONE: 812-944-6733 FAX: 812-948-5047
 e-Mail info@SAMTEC.com code 55322

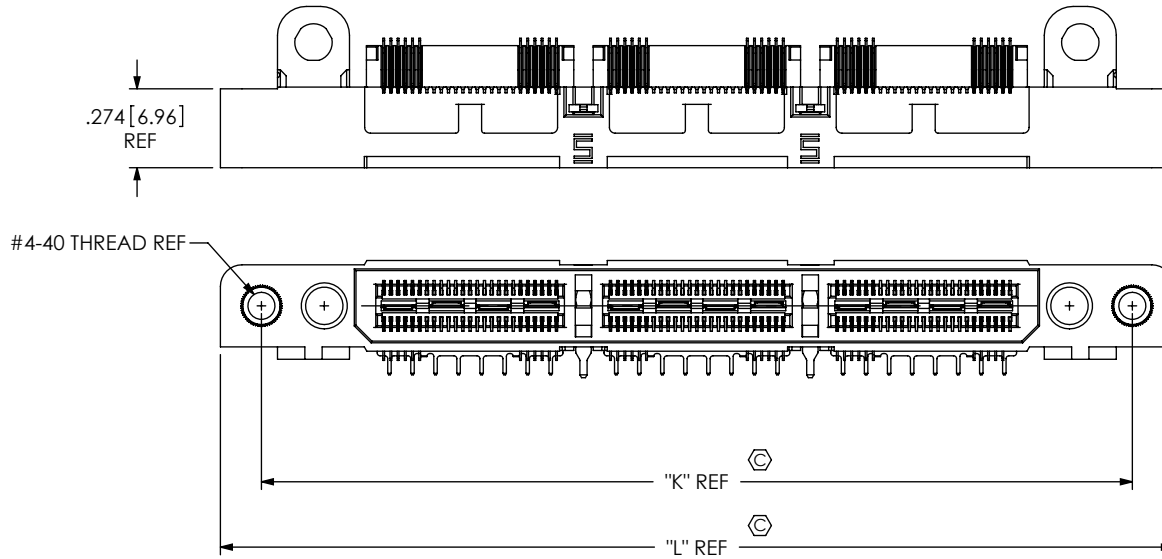
DESCRIPTION:
 .635mm DOUBLE ROW RIGHT ANGLE SOCKET STRIP

DWG. NO.

QSS-XXX-XX-XXX-D-RA-XX-XXX

BY: KEVIN B 01/22/02 SHEET 5 OF 6

FIG 5
 QSS-075-01-XXX-D-RA-WT-MTI SHOWN
 (SAME AS FIG. 1, EXCEPT AS SHOWN)
 (SOME CENTER DETAILS REMOVED FOR CLARITY)



POSITION	"K"	"L"
-025	1.450 [36.82]	1.735 [44.06]
-050	2.237 [56.82]	2.522 [64.06]
-075	3.025 [76.82]	3.310 [84.06]
*-100	3.812 [96.82]	4.097 [104.06]

* = SEE NOTE 12

TABLE 8: PLATING SPECIFICATIONS

	CONTACT 1	CONTACT 2	GROUND PLANE
-F	C-177-01-F: 3μ" FLASH GOLD CONTACT, MATTE TIN TAIL	C-178-02-F: 3μ" FLASH GOLD CONTACT, MATTE TIN TAIL	IM-1G18-XX-F: 3μ" FLASH GOLD CONTACT, MATTE TIN TAIL
-L	C-177-01-L: 10μ" LIGHT GOLD CONTACT, MATTE TIN TAIL	C-178-02-L: 10μ" LIGHT GOLD CONTACT, MATTE TIN TAIL	IM-1G18-XX-L: 10μ" LIGHT GOLD CONTACT, MATTE TIN TAIL
-H	C-177-01-H: 30μ" HEAVY GOLD CONTACT, 3μ" FLASH GOLD TAIL	C-178-02-H: 30μ" HEAVY GOLD CONTACT, 3μ" FLASH GOLD TAIL	IM-1G18-XX-L: 10μ" LIGHT GOLD CONTACT, MATTE TIN TAIL
-STL	C-177-01-STL: 30μ" SELECTIVE GOLD CONTACT, TIN/LEAD (90/10 +/-5%) TAIL	C-178-02-STL: 30μ" SELECTIVE GOLD CONTACT, TIN/LEAD (90/10 +/-5%) TAIL	IM-1G18-XX-STL: 30μ" SELECTIVE GOLD CONTACT, TIN/LEAD (90/10 +/-5%) TAIL
-FTL	C-177-01-FTL: 3μ" FLASH GOLD CONTACT, TIN/LEAD (90/10 +/-5%) TAIL	C-178-02-FTL: 3μ" FLASH GOLD CONTACT, TIN/LEAD (90/10 +/-5%) TAIL	IM-1G18-XX-FTL: 3μ" FLASH GOLD CONTACT, TIN/LEAD (90/10 +/-5%) TAIL

* PROPRIETARY NOTE *
 THIS DOCUMENT CONTAINS CONFIDENTIAL AND PROPRIETARY INFORMATION AND ALL DESIGN, MANUFACTURING, REPRODUCTION, USE, PATENT RIGHTS AND SALES RIGHTS ARE EXPRESSLY RESERVED BY SAMTEC, INC. THIS DOCUMENT SHALL NOT BE DISCLOSED, IN WHOLE OR PART, TO ANY UNAUTHORIZED PERSON OR ENTITY NOR REPRODUCED, TRANSFERRED OR INCORPORATED IN ANY OTHER PROJECT IN ANY MANNER WITHOUT THE EXPRESS WRITTEN CONSENT OF SAMTEC, INC.

DO NOT SCALE DRAWING

SHEET SCALE: 1:0.666667



520 PARK EAST BLVD, NEW ALBANY, IN 47150
 PHONE: 812-944-6733 FAX: 812-948-5047
 e-Mail info@SAMTEC.com code 55322

DESCRIPTION:
 .635mm DOUBLE ROW RIGHT ANGLE SOCKET STRIP
 DWG. NO. QSS-XXX-XX-XXX-D-RA-XX-XXX

BY: KEVIN B 01/22/02 SHEET 6 OF 6