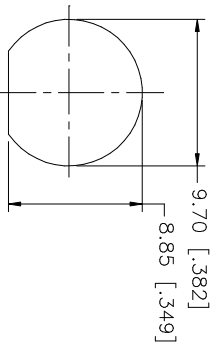
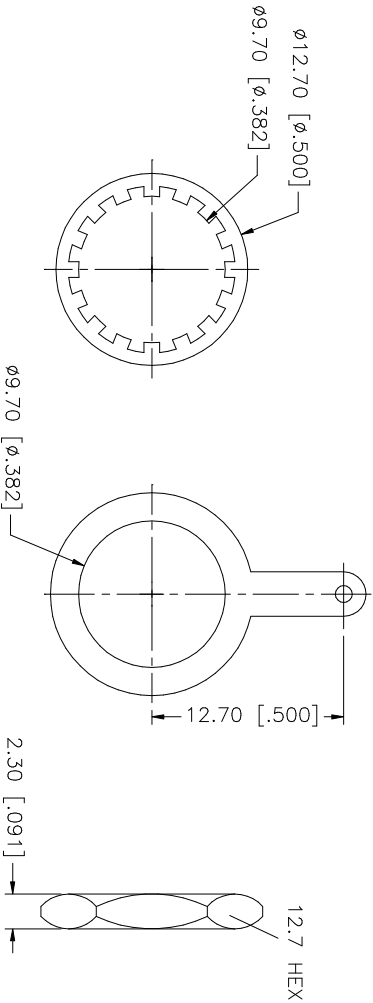
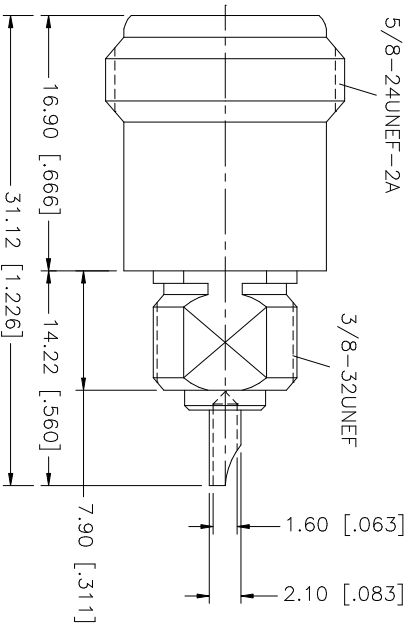


REV.	DATE	DESCRIPTION
A	01/30/04	UPDATE DRAWING FORMAT



RECOMMENDED MOUNTING  
HOLE DIMENSIONS



					UNLESS OTHERWISE SPECIFIED DIMENSIONS ARE IN MILLIMETERS. DIMENSIONS IN [ ] ARE IN INCHES AND FOR CUSTOMER REFERENCE ONLY.	UNLESS OTHERWISE SPECIFIED TOLERANCES FOR MILLIMETERS ARE: 0.5 - 8mm ± 0.20mm 8 - 30mm ± 0.40mm 30 - 120mm ± 0.50mm	UNLESS OTHERWISE SPECIFIED TOLERANCES FOR INCHES ARE: .020 - .315 = ± 0.007" .315 - 1.180 = ± 0.015" 1.180 - 4.724 = ± 0.020"	APPROVALS		DATE	<div>Amphenol Connex</div> <div>PART DESCRIPTION</div> <div>N FEMALE BULKHEAD</div>				
8								DRAWN	G.R.S.	01/30/04					
7					CHECKED										
6	HEX NUT	BRASS		NEXCOTE	1										
5	SOLDER TAG	BRASS		NEXCOTE	1										
4	LOCK WASHER	BRASS		NEXCOTE	1										
3	CONTACT PIN	BER. COPPER		GOLD	1										
2	INSULATOR	TEFLON		NATURAL	1										
1	BODY	BRASS		NEXCOTE	1										
	DESCRIPTION	MATERIAL	FINISH	QTY	DO NOT SCALE DRAWING	CAD FILE	C:/172/172270-11.DWG	DWG. NO.	172270-11.DWG	REV.		A	SIZE	A	SCALE

# Mouser Electronics

Authorized Distributor

Click to View Pricing, Inventory, Delivery & Lifecycle Information:

[Amphenol:](#)

[172270-11](#)