

DATE CODE: F0XXXX
WEEK
YEAR

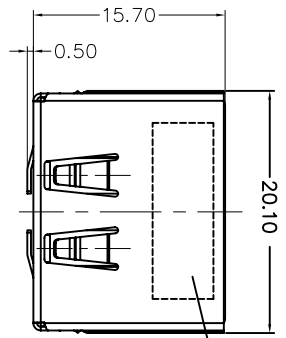
- NOTES:
1. MATERIAL: HOUSING: THERMOPLASTIC, HIGH TEMP, 30% G/F U.94 V-0 (BLACK) SPACER: THERMOPLASTIC, HIGH TEMP, 30% G/F U.94 V-0 (BLACK) ESATA CONTACT: COPPER USB CONTACT: COPPER FRONT SHELL: STEEL ALLOY (SPET) REAR SHELL: COPPER ALLOY
 2. FINISH: CONTACT: GOLD PLATING ON CONTACT AREA 100 u" MIN. MATT TIN PLATING ON SOLDER TAILS 50 u" MIN. NICKEL UNDERPLATING OVER ALL
 3. PRODUCT SPEC: GS-12-402
 4. THE HOUSING WILL WITHSTAND EXPOSURE TO 260C FOR 10 SEC IN A WAVE SOLDER APPLICATION WITH A 1.6MM PCB.
 5. PRODUCT NUMBERING 10074142-0 0 X X LF — LEAD FREE

RECOMMENDED P.C.B. LAYOUT
T=1.60
TOLERANCE: ±0.05 (COMPONENT VIEW)

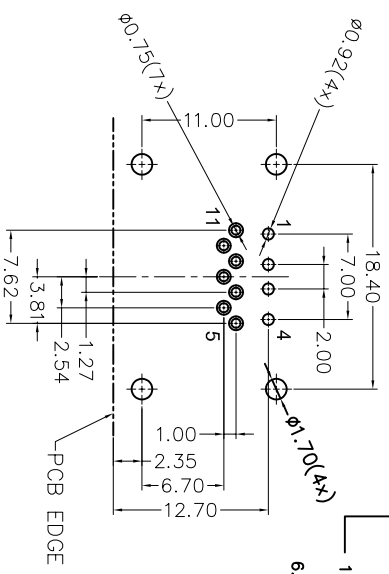
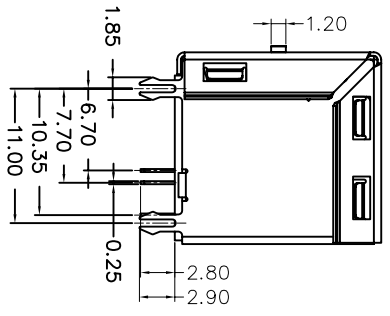
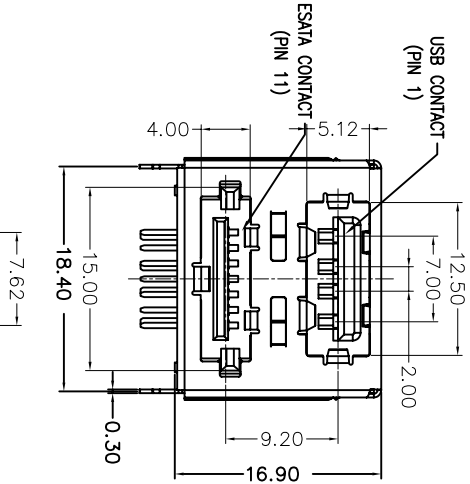
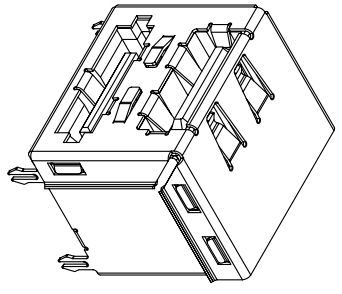
PIN DEFINITION

| USB | NAME | TYPE | ESATA | NAME | TYPE |
|-----|------|------|-------|------|------|
| P1 | VBUS | | P5 | GND | |
| P2 | D- | | P6 | A+ | |
| P3 | D+ | | P7 | A- | |
| P4 | GND | | P8 | GND | |
| | | | P9 | B- | |
| | | | P10 | B+ | |
| | | | P11 | GND | |

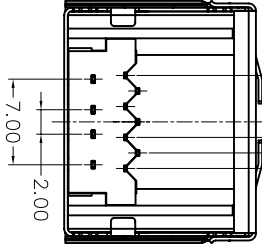
| mat'l. code | ecrn no | dr | ddte | tolerances unless otherwise specified | CUSTOMER COPY | title | product family | code |
|-------------|-------------|-------|------------------|---------------------------------------|---------------|-------------------------------|----------------|--------|
| A | 109-1094 | S.Lin | 06/26/09 | .XX ± 0.25 | projection | USB OVER ESATA, R/A, DIP TYPE | SATA | TWN |
| B | 110-0034 | S.Lin | 02/05/10 | .XXX ± 0.15 | | | | sheet |
| C | 110-0137 | S.Lin | 10'-08-23 angles | 0' ± 2' | | | | 1 of 3 |
| D | T-005421 | S.Lin | 11'-08-31 dr | | | | | |
| E | EX-S-007171 | HKL | 2013-06-13 | | | | | |
| F | EX-S-14970 | HKL | 2013-06-13 | | | | | |



DATE CODE: FCIXXXX
YEAR
WEEK



RECOMMENDED PCB LAYOUT(T=1.60mm)
TOLERANCE: ±0.05



| USB | |
|------|------|
| NAME | TYPE |
| P1 | VBUS |
| P2 | D- |
| P3 | D+ |
| P4 | GND |

| E-SATA | |
|--------|------|
| NAME | TYPE |
| P5 | GND |
| P6 | A+ |
| P7 | A- |
| P8 | GND |
| P9 | B- |
| P10 | B+ |
| P11 | GND |

< PIN DEFINITION >

- NOTES:
1. MATERIAL:
HOUSING: THERMOPLASTIC, HIGH TEMP, 30% G/F UL94 V-0(BLACK)
SPACER: THERMOPLASTIC, HIGH TEMP, 30 % G/F UL94 V-0(BLACK)
ESATA CONTACT: COPPER
USB CONTACT: COPPER ALLOY
FRONT SHELL: STEEL ALLOY (SPET)
REAR SHELL: COPPER ALLOY
 2. FINISH:
CONTACT: GOLD PLATING ON CONTACT AREA
100 µ" MIN. MATT TIN PLATING ON SOLDERTAILS
50µ" MIN. NICKEL UNDERPLATING OVER ALL

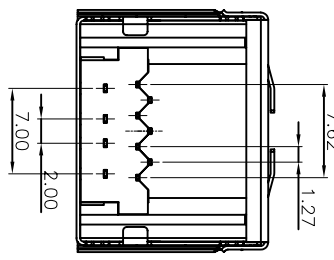
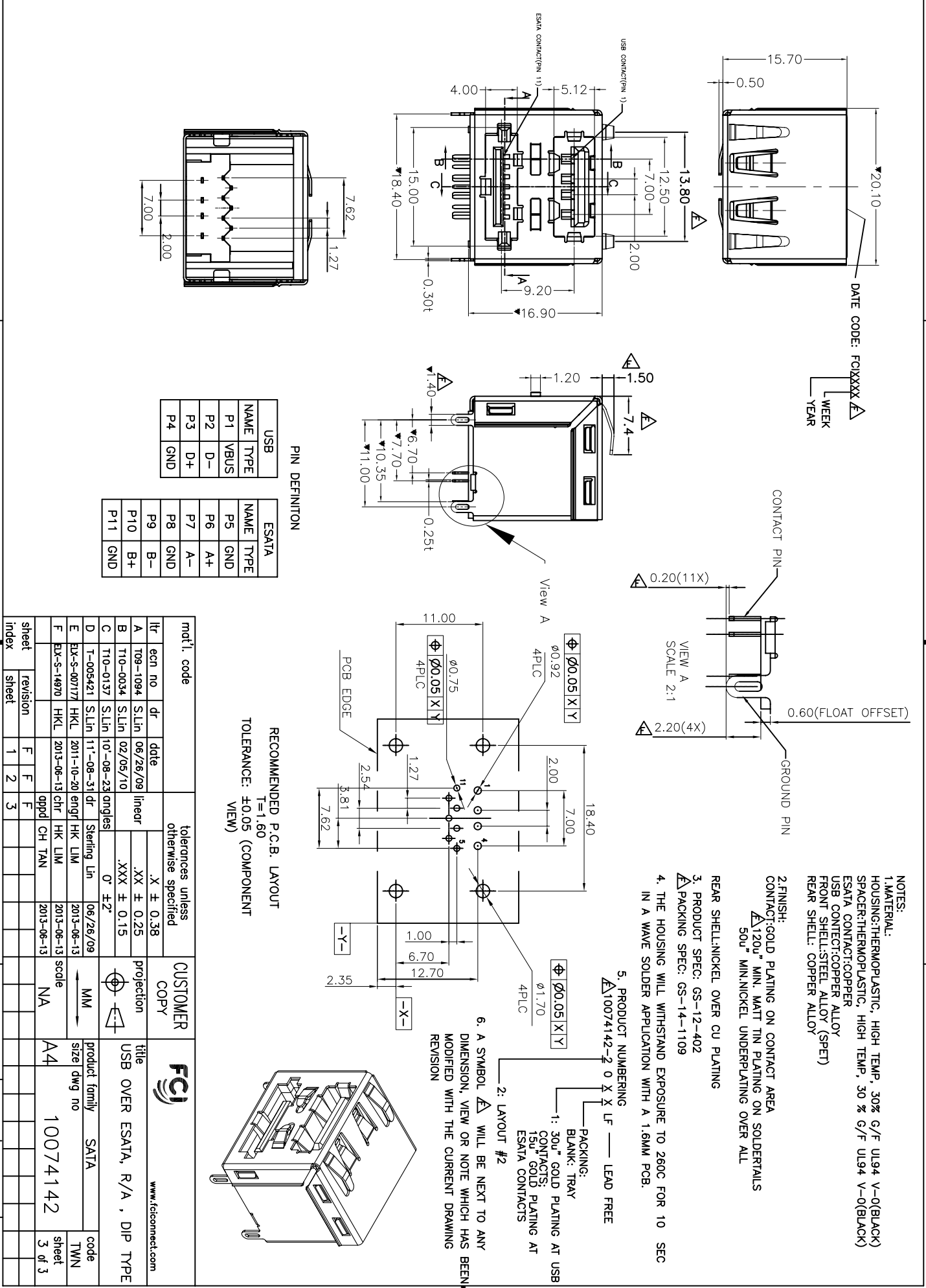
3. PRODUCT SPEC: GS-12-402
4. THE HOUSING WILL WITHSTAND EXPOSURE TO 280C FOR 10 SEC IN A WAVE SOLDER APPLICATION WITH A 1.6MM PCB.

5. PRODUCT NUMBERING
10074142-1 0 X X L F — LEAD FREE

6. A SYMBOL Δ WILL BE NEXT TO ANY DIMENSION, VIEW OR NOTE WHICH HAS BEEN MODIFIED WITH THE CURRENT DRAWING REVISION

PACKING:
BLANK: TRAY
1. Δ 30µ" GOLD PLATING AT USB CONTACTS
15µ" GOLD PLATING AT ESATA CONTACTS

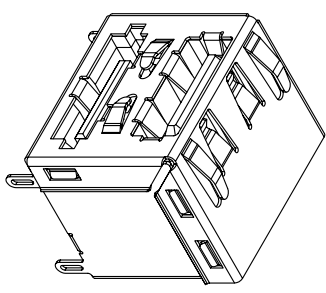
| mat'l code | | | | tolerances unless otherwise specified | | | | CUSTOMER COPY | | FCI | |
|------------|-------------|-------|------------|---------------------------------------|------------|------------|-------------|---------------|-------------------------------|----------------|--------|
| ltr | ecn no | dr | ddte | lineor | .XX ± 0.38 | .XX ± 0.25 | .XXX ± 0.15 | projection | title | product family | code |
| A | 109-1094 | S.Lin | 06/26/09 | | | | | | USB OVER ESATA, R/A, DIP TYPE | SATA | |
| B | 110-0034 | S.Lin | 02/05/10 | | | | | | | | |
| C | 110-0137 | S.Lin | 10'-08-23 | angles | 0' ±2' | | | | | | |
| D | T-005421 | S.Lin | 11'-08-31 | dr | | | | | | | |
| E | EX-S-007171 | HKL | 2013-06-13 | engr/HK | LM | | | | | | |
| F | EX-S-14970 | HKL | 2013-06-13 | chr | HK | LM | | | | | |
| sheet | revision | F | F | F | F | F | F | MM | | | |
| index | sheet | 1 | 2 | 3 | | | | scale | size | dwg no | code |
| | | | | | | | | NA | A4 | 10074142 | code |
| | | | | | | | | | | | TWN |
| | | | | | | | | | | | sheet |
| | | | | | | | | | | | 2 of 3 |



PIN DEFINITION

| USB | ESATA |
|------|-------|
| NAME | NAME |
| TYPE | TYPE |
| P1 | P5 |
| VBUS | GND |
| P2 | P6 |
| D- | A+ |
| P3 | P7 |
| D+ | A- |
| P4 | P8 |
| GND | GND |
| | P9 |
| | B- |
| | P10 |
| | B+ |
| | P11 |
| | GND |

RECOMMENDED P.C.B. LAYOUT
T=1.60
TOLERANCE: ±0.05 (COMPONENT VIEW)



- NOTES:**
1. MATERIAL:
HOUSING: THERMOPLASTIC, HIGH TEMP, 30% G/F U.94 V-0(BLACK)
SPACER: THERMOPLASTIC, HIGH TEMP, 50% G/F U.94 V-0(BLACK)
ESATA CONTACT: COPPER
USB CONTACT: COPPER ALLOY
FRONT SHELL: STEEL ALLOY (SPET)
REAR SHELL: COPPER ALLOY
 2. FINISH:
CONTACT: GOLD PLATING ON CONTACT AREA
Δ120μ" MIN. MATT TIN PLATING ON SOLDER TAILS
50μ" MIN. NICKEL UNDERPLATING OVER ALL
 3. PRODUCT SPEC: GS-12-402
 - Δ PACKING SPEC: GS-14-1109
 4. THE HOUSING WILL WITHSTAND EXPOSURE TO 260C FOR 10 SEC IN A WAVE SOLDER APPLICATION WITH A 1.6MM PCB.
 5. PRODUCT NUMBERING
Δ10074142-2 0 X X X LF — LEAD FREE

6. A SYMBOL Δ WILL BE NEXT TO ANY DIMENSION, VIEW OR NOTE WHICH HAS BEEN MODIFIED WITH THE CURRENT DRAWING REVISION
- 2: LAYOUT #2
- PACKING:
BLANK: TRAY
1: 30μ" GOLD PLATING AT USB CONTACTS
15μ" GOLD PLATING AT ESATA CONTACTS

| mat'l. code | tolerances unless otherwise specified | | CUSTOMER COPY | | title | | |
|-------------|---------------------------------------|-------|---------------|------------|-------------|-------------------------------|------------|
| ecrn no | dr | ddte | lineor | projection | MM | product family | |
| A | T09-1094 | S.Lin | 06/26/09 | lineor | .X ± 0.38 | USB OVER ESATA, R/A, DIP TYPE | |
| B | T10-0034 | S.Lin | 02/05/10 | | .XX ± 0.25 | | |
| C | T10-0137 | S.Lin | 10'-08-23 | angles | .XXX ± 0.15 | | |
| D | T-005421 | S.Lin | 11'-08-31 | dr | 0° ±2° | | |
| E | EX-S-007171 | HKL | 2013-06-13 | engr | HK LIM | 2013-06-13 | |
| F | EX-S-14970 | HKL | 2013-06-13 | chr | HK LIM | 2013-06-13 | |
| sheet | revision | F | F | F | pppl | CH TAN | 2013-06-13 |
| index | sheet | 1 | 2 | 3 | | | |

ACAD

code code

code

1 | 2

3 |

4

1 | 2

3 |

4

Mouser Electronics

Authorized Distributor

Click to View Pricing, Inventory, Delivery & Lifecycle Information:

[FCI / Amphenol:](#)

[10074142-001LF](#) [10074142-101LF](#) [10074142-201LF](#)