

THIS DRAWING IS UNPUBLISHED.

RELEASED FOR PUBLICATION

© COPYRIGHT

ALL RIGHTS RESERVED.

LOC

DIST

REVISIONS

変更

P

LTR

DESCRIPTION

DATE

DWN

APVD

A1

REVISED PER ECO-11-005030

24MAR11

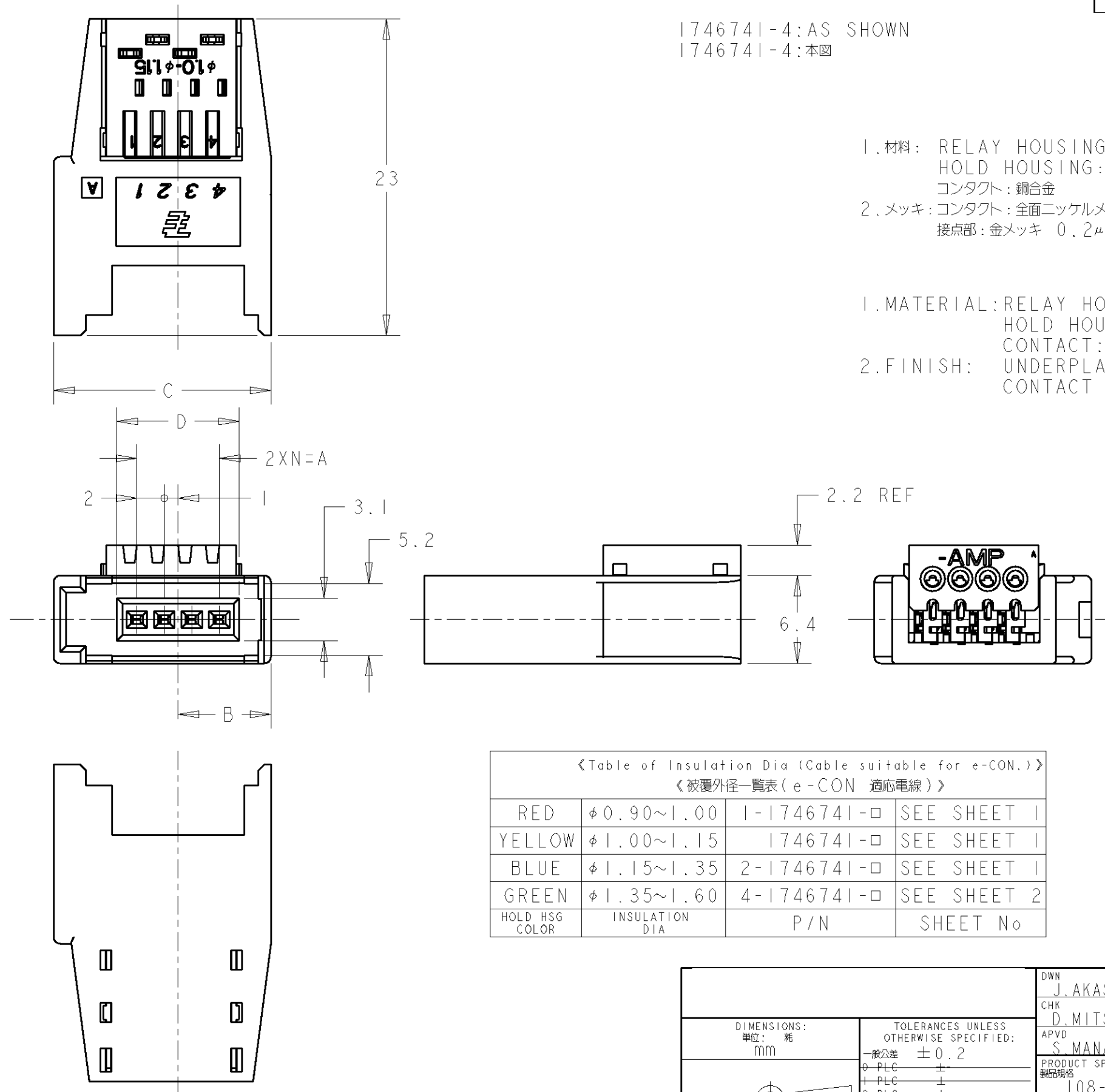
RK

HMR

1746741-4: AS SHOWN  
1746741-4: 本図

1. 材料: RELAY HOUSING: ガラス入り熱可塑性ポリエステル樹脂、94V-0、黒  
HOLD HOUSING: ポリカーボネイト 94V-0 黄色: 0-, 赤色: 1-, 青色: 2-  
コンタクト: 銅合金
2. メッキ: コンタクト: 全面ニッケルメッキ下地 1.27μm MIN  
接点部: 金メッキ 0.2μm MIN

1. MATERIAL: RELAY HOUSING: GLASS FILED THERMOPLASTIC, 94V-0, BLACK.  
HOLD HOUSING: PC, 94V-0, YELLOW: 0-, RED: 1-, BLUE: 2-  
CONTACT: COPPER ALLOY.
2. FINISH: UNDERPLATE: Ni 1.27μm min.  
CONTACT AREA: Au 0.2μm min.



《Table of Insulation Dia (Cable suitable for e-CON.)》 《被覆外径一覧表 (e-CON 対応電線)》			
RED	φ0.90~1.00	1-1746741-□	SEE SHEET 1
YELLOW	φ1.00~1.15	1746741-□	SEE SHEET 1
BLUE	φ1.15~1.35	2-1746741-□	SEE SHEET 1
GREEN	φ1.35~1.60	4-1746741-□	SEE SHEET 2
HOLD HSG COLOR	INSULATION DIA	P/N	SHEET No

BLUE	16.9	23.8	10.75	14	7	8	2-1746741-8
RED	16.9	23.8	10.75	14	7	8	1-1746741-8
YELLOW	16.9	23.8	10.75	14	7	8	1746741-8
BLUE	12.9	19.8	8.75	10	5	6	2-1746741-6
RED	12.9	19.8	8.75	10	5	6	1-1746741-6
YELLOW	12.9	19.8	8.75	10	5	6	1746741-6
BLUE	8.9	15.8	6.75	6	3	4	2-1746741-4
RED	8.9	15.8	6.75	6	3	4	1-1746741-4
YELLOW	8.9	15.8	6.75	6	3	4	1746741-4
BLUE	6.9	13.8	5.75	4	2	3	2-1746741-3
RED	6.9	13.8	5.75	4	2	3	1-1746741-3
YELLOW	6.9	13.8	5.75	4	2	3	1746741-3
HOLD HSG COLOR	D	C	B	A	N	POS	P/N

WIRE RANGE  
対応電線断面積INSULATION DIA  
被覆外径

TE

TE Connectivity

SOCKET ASSY  
E-CON  
RITS CONN.

SIZE

CAGE CODE

DRAWING NO

RESTRICTED TO

A3

00779

C=1746741

-

CUSTOMER DRAWING

SCALE  
尺度 3:1SHEET  
1 OF 2REV  
A1

取扱説明書 (Instruction Sheet): 411-78014

4

3

2

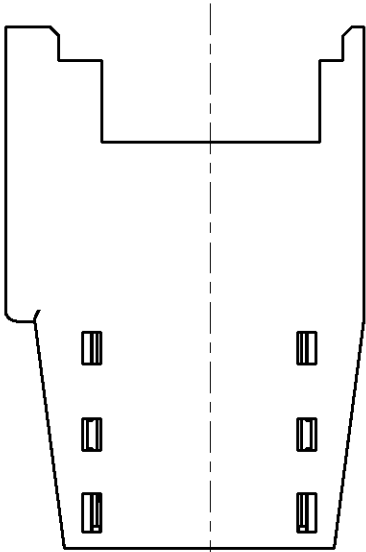
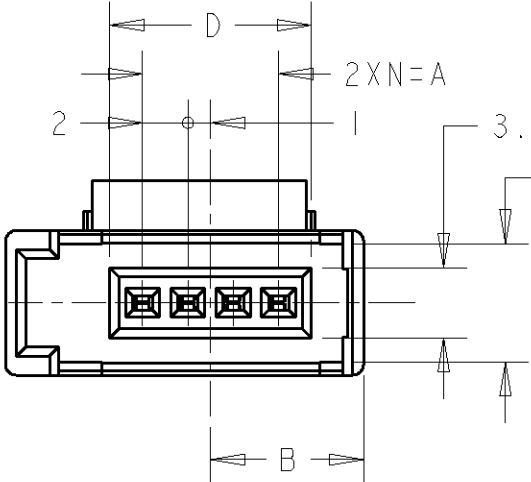
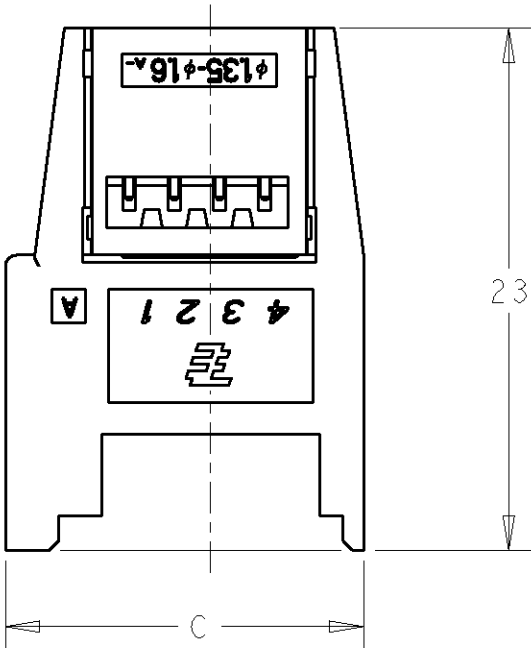
1

LOC	DIST	REVISIONS				
		P	LTR	DESCRIPTION	DATE	DWN APVD
J	-	-	-	SEE SHEET 1	-	-


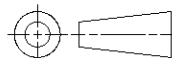
4-1746741-4:AS SHOWN  
4-1746741-4:本図

- 1.材料: RELAY HOUSING: ガラス入り熱可塑性ポリエステル樹脂、94V-0、黒  
HOLD HOUSING: ポリカーボネイト 94V-0 緑色: 4-  
コンタクト: 銅合金
- 2.メッキ: コンタクト: 全面ニッケルメッキ下地 1.27μm MIN  
接点部: 金メッキ 0.2μm MIN

- 1.MATERIAL: RELAY HOUSING: GLASS FILED THERMOPLASTIC, 94V-0, BLACK.  
HOLD HOUSING: PC, 94V-0, YELLOW: 0-, RED: 1-, BLUE: 2-.
- 2.FINISH: UNDERPLATE: Ni 1.27μm min.  
CONTACT AREA: Au 0.2μm min.



GREEN	16.9	23.8	10.75	14	7	8	4-1746741-8
	12.9	19.8	8.75	10	5	6	4-1746741-6
	8.9	15.8	6.75	6	3	4	4-1746741-4
	6.9	13.8	5.75	4	2	3	4-1746741-3
HOLD HSG COLOR	D	C	B	A	N	POS	P/N

		DWN J. AKASAKA		02FEB2004		 TE Connectivity		
DIMENSIONS:  mm		TOLERANCES UNLESS OTHERWISE SPECIFIED:		CHK -	NAME			
		0 PLC ±-		APVD -	SOCKET ASSY E-CON RITS CONN.			
		1 PLC ±-		PRODUCT SPEC -				
		2 PLC ±-						
		3 PLC ±-						
4 PLC ±-		APPLICATION SPEC		SIZE CAGE CODE DRAWING NO			RESTRICTED TO	
ANGLES ±-		-						
MATERIAL SEE NOTE		FINISH SEE NOTE		WEIGHT -	A3 00779 C-1746741		-	
CUSTOMER DRAWING				SCALE 3:1		SHEET 2 OF 2		REV A1

# Mouser Electronics

Authorized Distributor

Click to View Pricing, Inventory, Delivery & Lifecycle Information:

[TE Connectivity:](#)

[4-1746741-3](#)