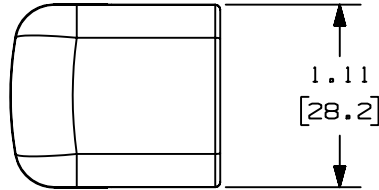


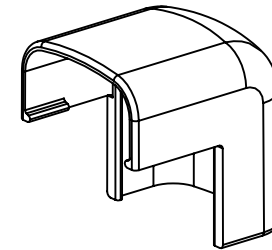
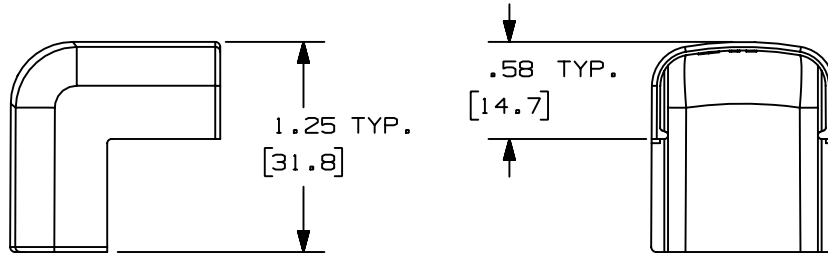
THIS COPY IS PROVIDED ON A RESTRICTED BASIS AND IS NOT TO BE USED IN ANY WAY DETRIMENTAL TO THE INTERESTS OF PANDUIT CORP.



$\triangle B$	PANDUIT P/N	WEIGHT
$\triangle C$	OCF5	0.96 LB/100 PCS. (437g/100 PCS.)

$\triangle D$ NOTES:

1. SEE CURRENT CATALOG FOR ADDITIONAL PART NUMBER SUFFIXES TO INDICATE COLOR AND OR PACKAGE QUANTITY.
2. DIMENSIONS IN PARENTHESIS ARE IN METRIC.



$\triangle E$

CAD FILENAME/LAYERS D34474BB_DC_OCF5_01.prt

										PANDUIT CORP. TINLEY PARK, ILLINOIS						
										OUTSIDE CORNER FITTING (OCF5) CUSTOMER DRAWING						
										UNLESS OTHERWISE SPECIFIED, DIMENSIONAL TOLERANCES ARE: (.X) ± (.XXX) ± (.XX) ± .03(.8) ANGLES ±		UNLESS OTHERWISE SPECIFIED, ALL DIMENSIONS ARE GIVEN IN INCHES, THIRD ANGLE PROJECTION.				
6	7-3-02	JHN	RMHI	F. REVISED MATERIAL IN DRAWING TITLE BLOCK.			16866	RGR	RGR		DRAWN BY KJS DATE 9-10-81 CHK'D JK		MAT'L: ABS $\triangle F$		SCALE FULL DRAWING NO. SS-16866 DWG SIZE A	
5	8-28-00	MSO	HIW	E. REVISED AND REDRAWN ON CAD.			16866	HIW	HIW							
4	10-3-91	DW	CF	D. REVISED NOTE AND REMOVED COLOR FROM DRAWING.			16866		CF							
3	2-28-91	DW	CF	C. REVISED COLORS: OMIT BG, LI, LG. ADDED INT. WHITE AND INT. GRAY.			16866		WJB							
2	12-2-87	LDB	WJB	B. ADDED PART NUMBERS OCF5E1 AND OCF5L1.			16866		WJB							
1	5-14-82	KJS	JK	A. POLYSTYRENE WAS ABS.					JAK							
R	9-14-81	KJS	HP	DRAWING RELEASED					HP							
REV	DATE	BY	CHK	DESCRIPTION			ECN	R	CUST	SUP						

Mouser Electronics

Authorized Distributor

Click to View Pricing, Inventory, Delivery & Lifecycle Information:

Panduit:

[OCF5IW-E](#) [OCF5EI-E](#) [OCF5IG-E](#) [OCF5WH-E](#)