

4

3

2

1

THIS DRAWING IS UNPUBLISHED.

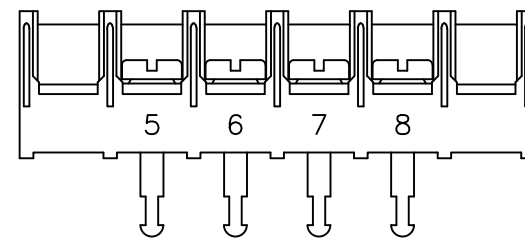
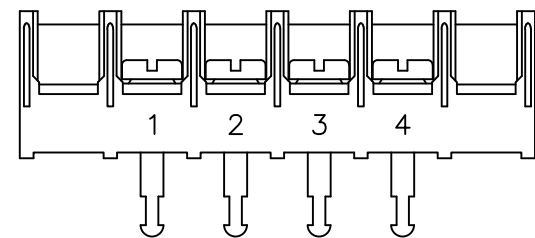
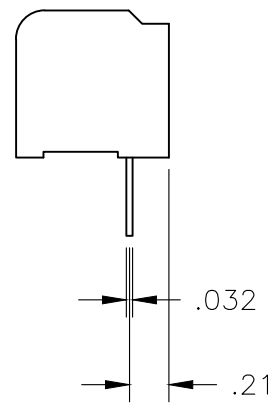
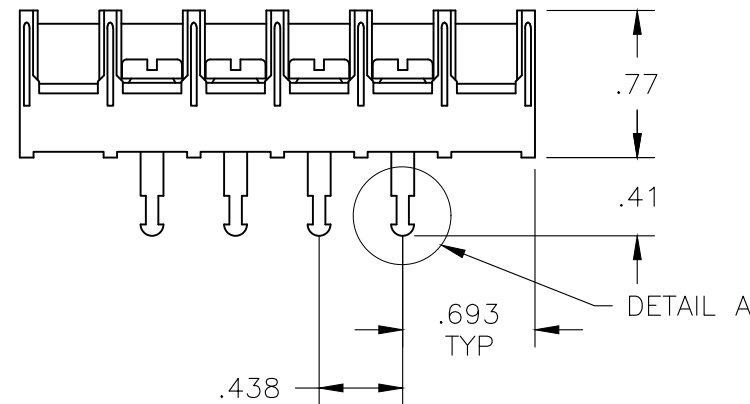
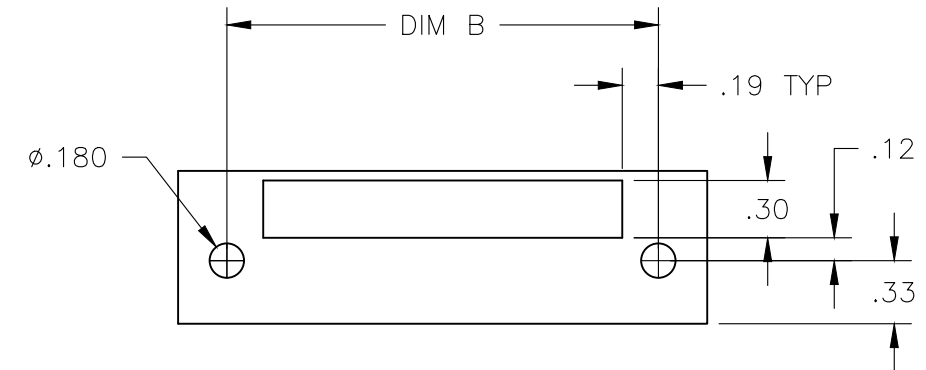
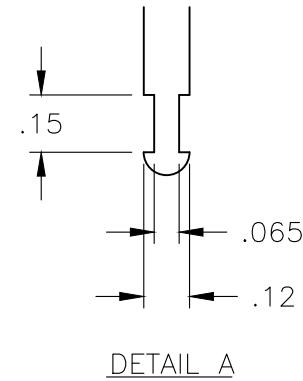
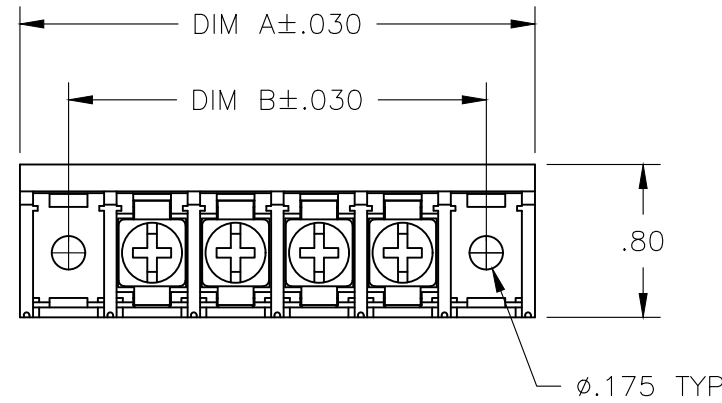
RELEASED FOR PUBLICATION

© COPYRIGHT — TE Connectivity Ltd.

ALL RIGHTS RESERVED.

REVISIONS

P	LTR	DESCRIPTION	DATE	DWN	APVD
	D1	PART STATUS UPDATED	22JAN2018	RK	PS



~~1-796857-9~~ 1

~~2-796857-0~~ 1


OBSOLETE	8.312	8.823	18	8STV-18-006	1-796857-8
	7.875	8.385	17	8STV-17-006	1-796857-7
	7.437	7.948	16	8STV-16-006	1-796857-6
	7.000	7.510	15	8STV-15-006	796857-2
	6.562	7.073	14	8STV-14-006	1-796857-4
	6.125	6.635	13	8STV-13-006	1-796857-3
	5.687	6.198	12	8STV-12-006	6-1437659-6
	5.250	5.760	11	8STV-11-006	1-796857-1
	4.812	5.323	10	8STV-10-006	6-1437659-4
	4.375	4.885	9	8STV-09-006	6-1437659-3
	3.937	4.448	8	8STV-08-006	796857-8
	3.500	4.010	7	8STV-07-006	796857-7
1 OBSOLETE	3.062	3.573	6	8STV-06-006	796857-1
	2.625	3.135	5	8STV-05-006	796857-6
OBSOLETE	2.187	2.698	4	8STV-04-660	2-796857-0
	2.187	2.698	4	8STV-04-659	1-796857-9
OBSOLETE	1.750	2.260	3	8STV-03-006	4-1437659-8
	1.313	1.823	2	8STV-02-006	796857-5
DIM B		DIM A	NO OF POS	CATALOG NUMBER	TE PART NO

MATERIAL:  
HOUSING: THERMOPLASTIC, UL94V-0, BLACK.  
TERMINALS: BRIGHT TIN PLATED COPPER ALLOY.  
SCREWS: 8-32, ZINC PLATED STEEL.

ELECTRICAL:  
CURRENT RATING: 30A  
VOLTAGE RATING: 600V  
WIRE RANGE: 10-18 AWG (UL)  
10-22 AWG (CSA)

ENVIRONMENTAL:  
RECOMMENDED TORQUE: 20 IN-LB.  
OPERATING TEMP.: -40°C TO +120°C

1 OBSOLETE PARTS: OBSOLETE CIS STREAMLINING PER D.RENAUD/D.SINISI

THIS DRAWING IS A CONTROLLED DOCUMENT.		DWN S SCHLEGEL 2/6/04	 TE Connectivity Ltd.		
		CHK H WAKEEM 2/6/04			
		APVD S YODER 2/6/04	NAME		
DIMENSIONS: INCHES		PRODUCT SPEC	8STV-XX-006 ASSEMBLY		
		APPLICATION SPEC			
		WEIGHT	SIZE A3	CAGE CODE 00779	RESTRICTED TO —
MATERIAL		FINISH	DRAWING NO C-4-1437659-8	SCALE 1:1	REV D1
			CUSTOMER DRAWING		
			SHEET 1 OF 1		

# Mouser Electronics

Authorized Distributor

Click to View Pricing, Inventory, Delivery & Lifecycle Information:

[TE Connectivity:](#)

[8STV-09-006](#)