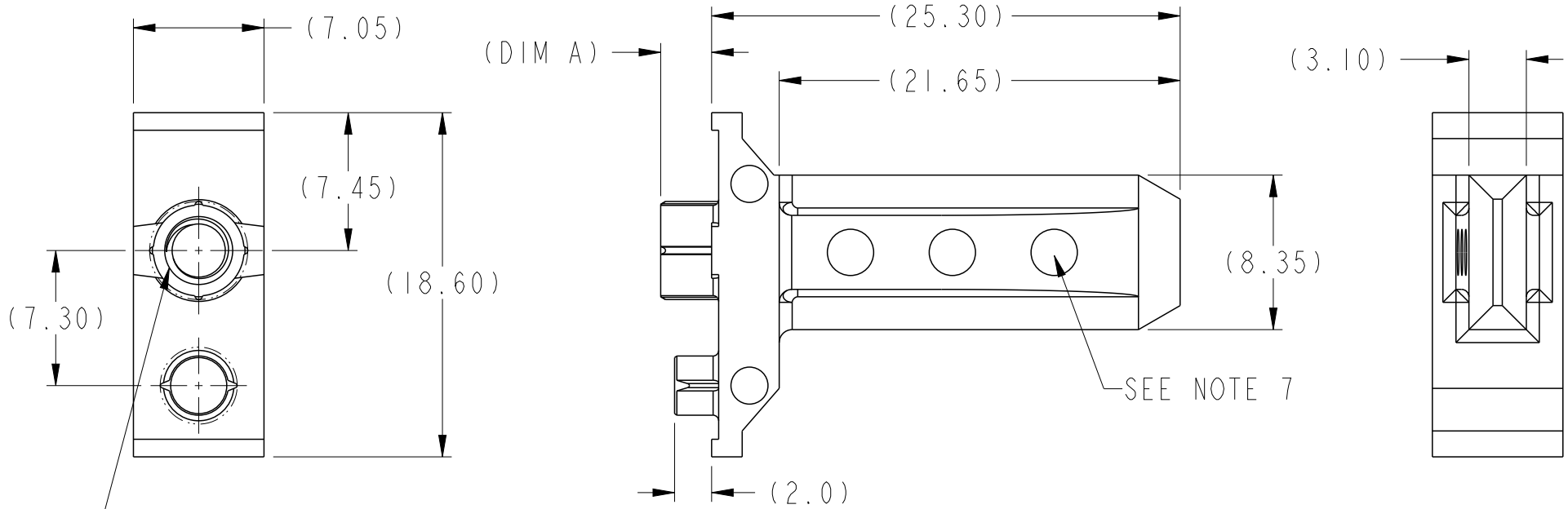


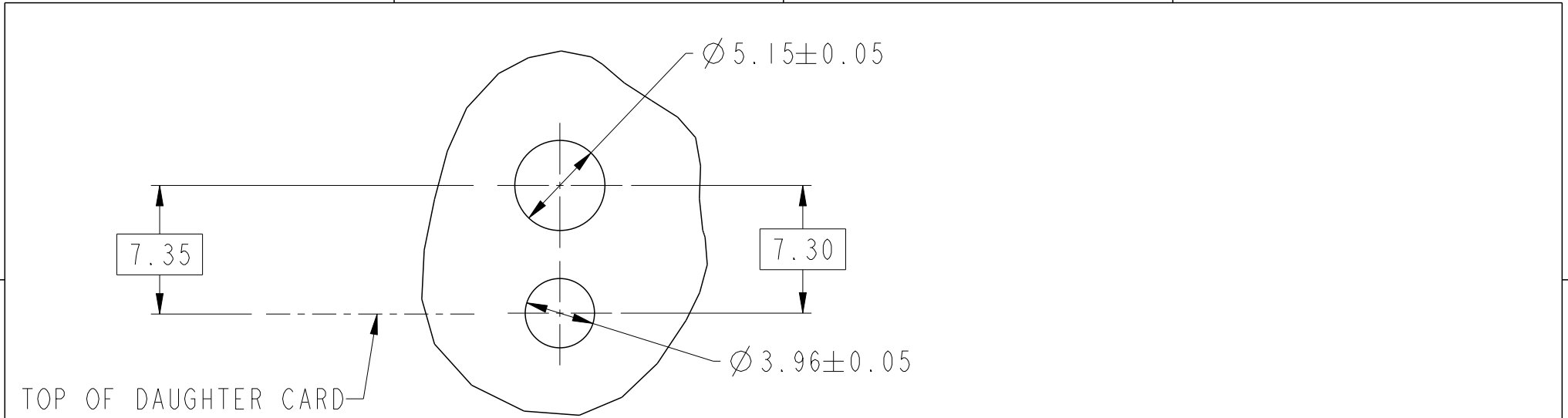
PRODUCT NUMBER	DIM A
10066832-101LF	2.75
10066832-102LF	1.20



M3.5 X 0.6-6H  
 THREAD DEPTH 5.00mm MINIMUM FOR -101LF  
 THREAD DEPTH 3.45mm MINIMUM FOR -102LF

spec ref		dr	Chen-Hong Tan	2006/05/02	projection 	MM 	size	A4	scale	2:1		
tolerance std		eng	Terry Luo	2023/07/18			ecn no	ELX-DG-46494-1				
ASME Y14.5		chr	-	-			rel level	Released				
-		appr	Heaven Cen	2023/09/07	product family	AirMax Accessories						
surface 3.2 ASME Y14.5	linear	0.X	±0.3	Amphenol FCi	title	7.2mm GUIDE PIN 25.3mm LONG, W/ INTERNAL THREAD		dwg no	10066832		rev	D
		0.XX	±0.10									
0.XXX	±0.050											
	angular	0°	±2°	cat. no.	-	Product - Customer Drw		sheet 1 of 2				

Creo F114:ELX-MC:AC,REV F,2020-12-21



TOP OF DAUGHTER CARD

SEE NOTE 3 & 4  
SCALE 3:1

1. MATERIAL: ZINC ALLOY.
2. FINISH: ZINC YELLOW CHROMATE FOR -101LF.  
NICKEL OVER COPPER FOR -102LF
- ③ APPLICATION SPECIFICATION: GS-20-045
- ④ REFER TO CUSTOMER DRAWING 10035911 FOR INFORMATION REGARDING PCB LAYOUT OF POWER AND GUIDE MODULES RELATIVE TO SIGNAL MODULES.
5. THIS PRODUCT MEETS EUROPEAN UNION DIRECTIVES AND OTHER COUNTRY REGULATIONS AS DESCRIBED IN GS-22-008
6. PACKAGING MEETS GS-14-920 LEAD FREE LABELING SPECIFICATION.
- ⑦ CODE MARKING 01 FOR -101LF AND 02 FOR -102LF WILL BE SHOWN IN APPROX. AREA.

spec ref		dr <b>Chen-Hong Tan</b>		2006/05/02		projection		size		scale	
tolerance std		eng <b>Terry Luo</b>		2023/07/18				MM		A4 3:10	
ASME Y14.5		chr -		-							
-		appr <b>Heaven Cen</b>		2023/09/07		product family		AirMax VS		ecn no <b>ELX-DG-46494-1</b>	
surface 3.200		linear		0.X		±0.3		<b>Amphenol FCi</b>		title 7.2mm GUIDE PIN 25.3mm LONG, W/ INTERNAL THREAD cat. no. - Product - Customer Drw	
ASME Y14.5		angular		0°		±2°					
				0.XXX		±0.050					
								dwg no		10066832	
										rev	
										<b>D</b>	
										sheet 2 of 2	