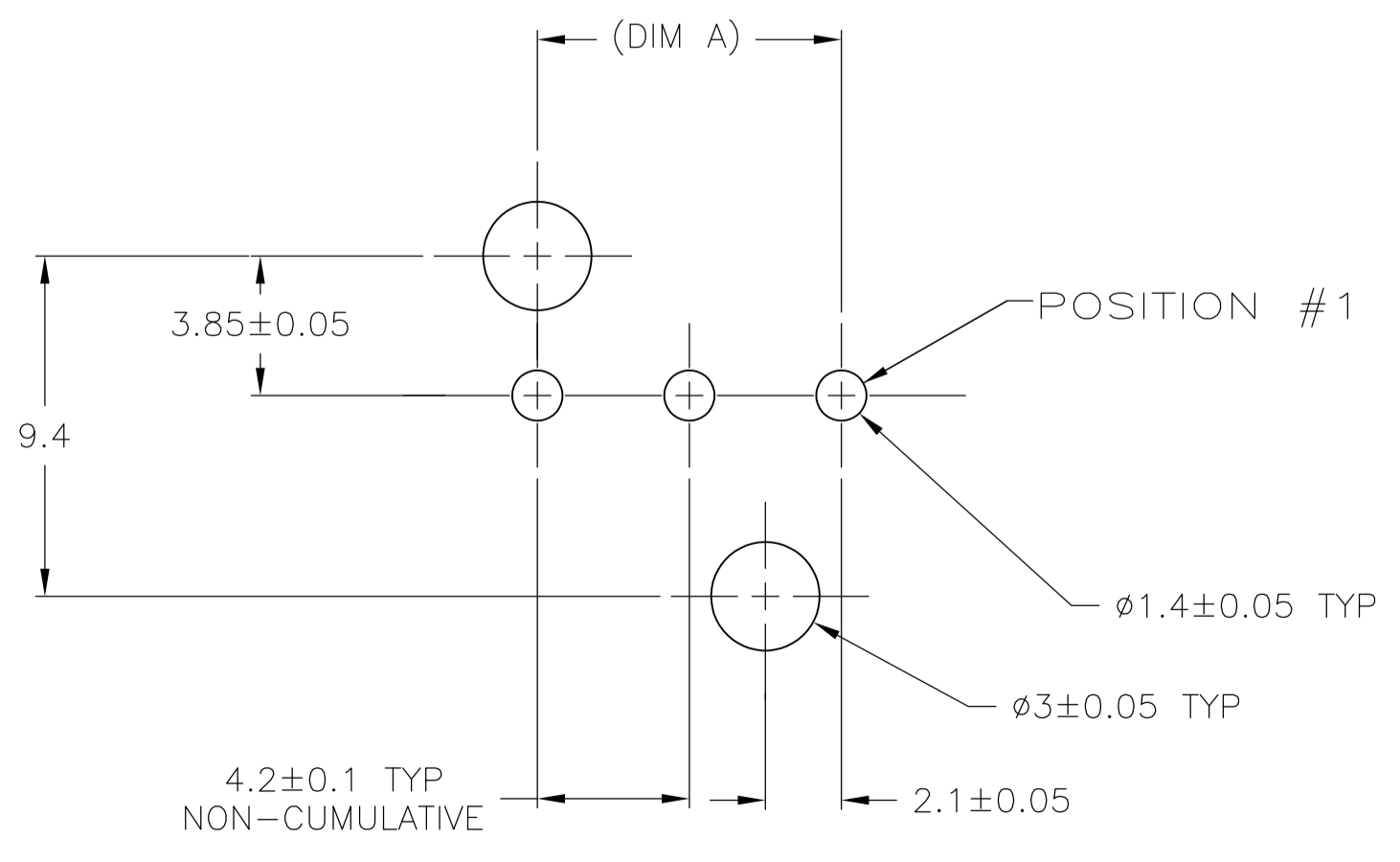
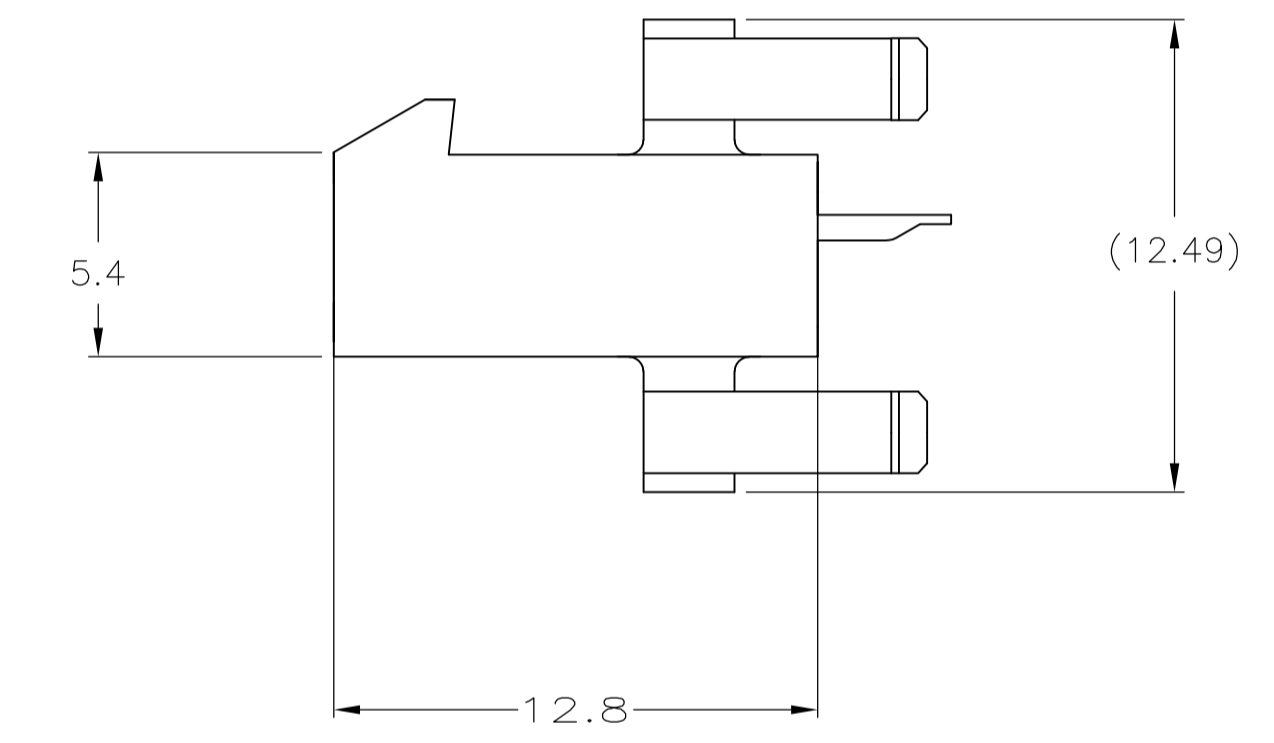
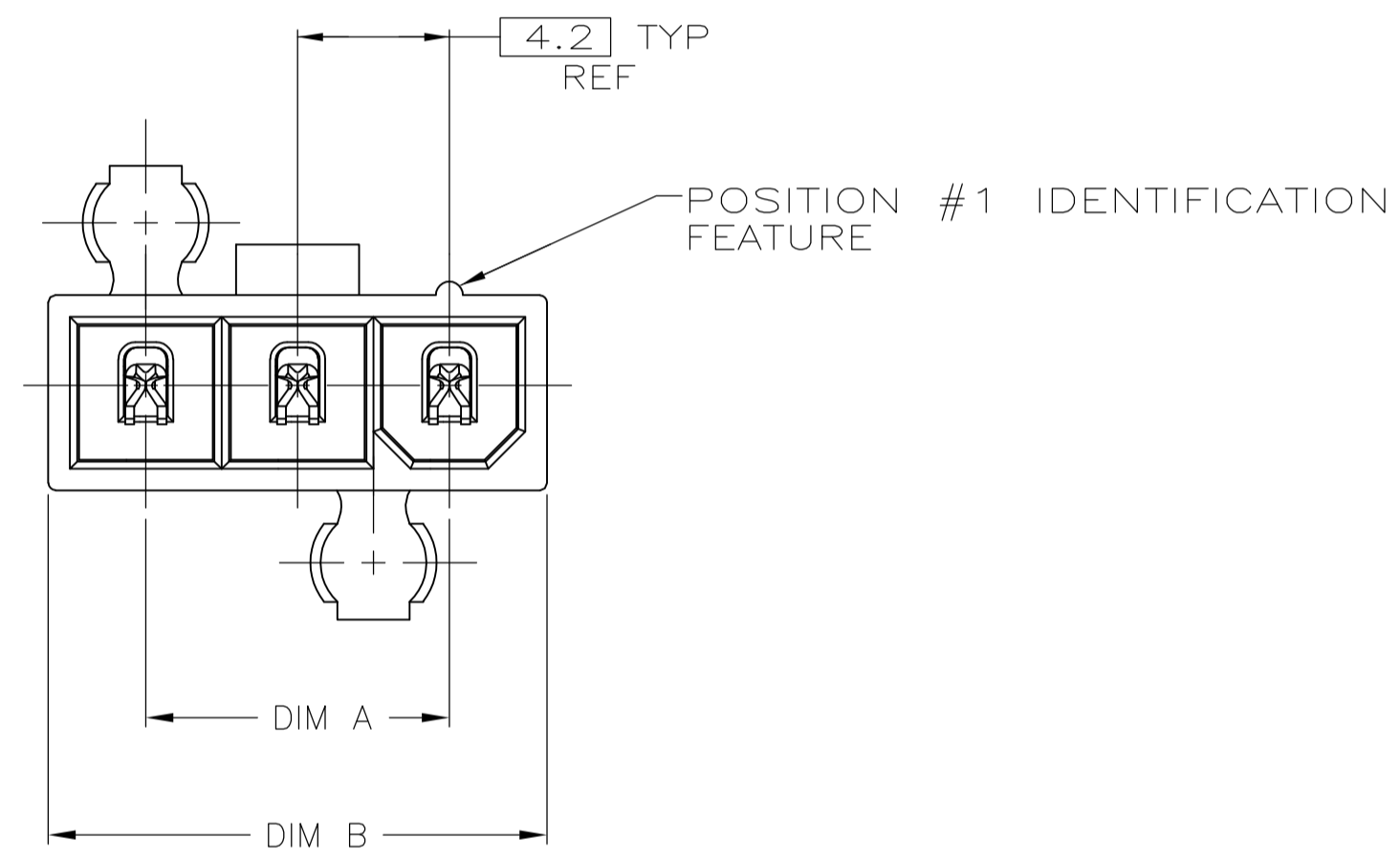
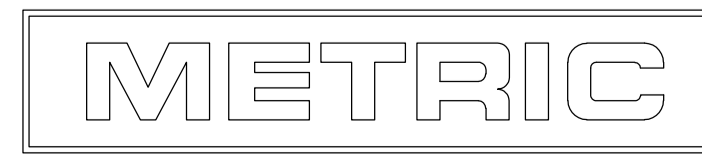


- 1 MATERIAL: HOUSING-NYLON, UL94V-2 (COLOR-NATURAL, COLOR OF PARTS MAY VARY) CONTACTS-0.25 [.010] THICK BRASS ALLOY.
- 2 TYCO ELECTRONICS LOGO AND MATERIAL ID MAY BE LOCATED ON EITHER LONG SIDE OF PART.
- 3 CONTACT FINISH: 0.002032 [.000080] MIN MATTE TIN OVER 0.000381 [.000015] MIN NICKEL OVER ENTIRE CONTACT.
- 4 MATES WITH VAL-U-LOK(TM) RECEPTACLE HOUSINGS.



RECOMMENDED MOUNTING HOLE PATTERN FOR 1.78 MAX THICK P.C. BOARD COMPONENT SIDE SHOWN

| 22.2  | 16.8  | 5                | 2029058-5 |
|-------|-------|------------------|-----------|
| 18    | 12.6  | 4                | 2029058-4 |
| 13.8  | 8.4   | 3                | 2029058-3 |
| DIM B | DIM A | NO. OF POSITIONS | PART NO   |



|  |         |  |        |
|--|---------|--|--------|
| THIS DRAWING IS A CONTROLLED DOCUMENT. |         | DIN K. WHITAKER 11JAN2008  |        |
| DIMENSIONS: mm                         |         | CHK C. CASH 11JAN2008  |        |
| TOLERANCES UNLESS OTHERWISE SPECIFIED: |         | APVD C. CASH 11JAN2008   |        |
| 0 PLC                                  | ± -     | NAME   |        |
| 1 PLC                                  | ± 0.2   | PLUG ASSEMBLY, VERTICAL, SINGLE ROW, 94V-2, W/O DRAIN HOLES, VAL-U-LOK(TM) |        |
| 2 PLC                                  | ± 0.13  | SIZE   |        |
| 3 PLC                                  | ± -     | CAGE CODE  |        |
| 4 PLC                                  | ± -     | DRAWING NO   |        |
| ANGLES                                 | ± 0°30' | RESTRICTED TO  |        |
| MATERIAL                               | FINISH  | WEIGHT   | —      |
| CUSTOMER DRAWING                       |         | SCALE  | 5:1    |
|  |         | SHEET  | 1 OF 1 |
|  |         | REV  | A1     |

# Mouser Electronics

Authorized Distributor

Click to View Pricing, Inventory, Delivery & Lifecycle Information:

[TE Connectivity:](#)

[2029058-3](#)