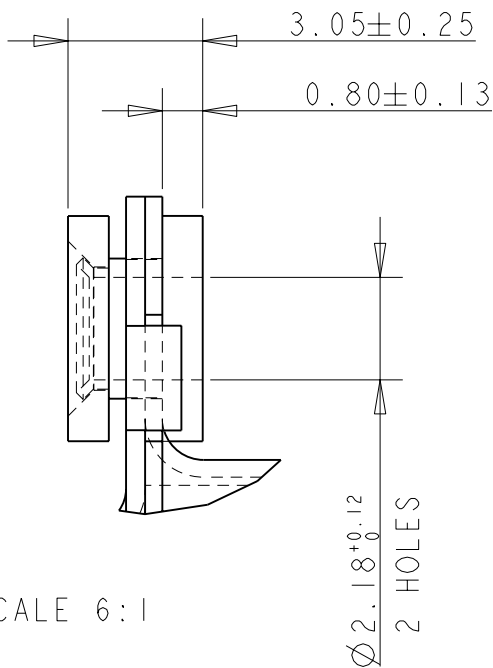
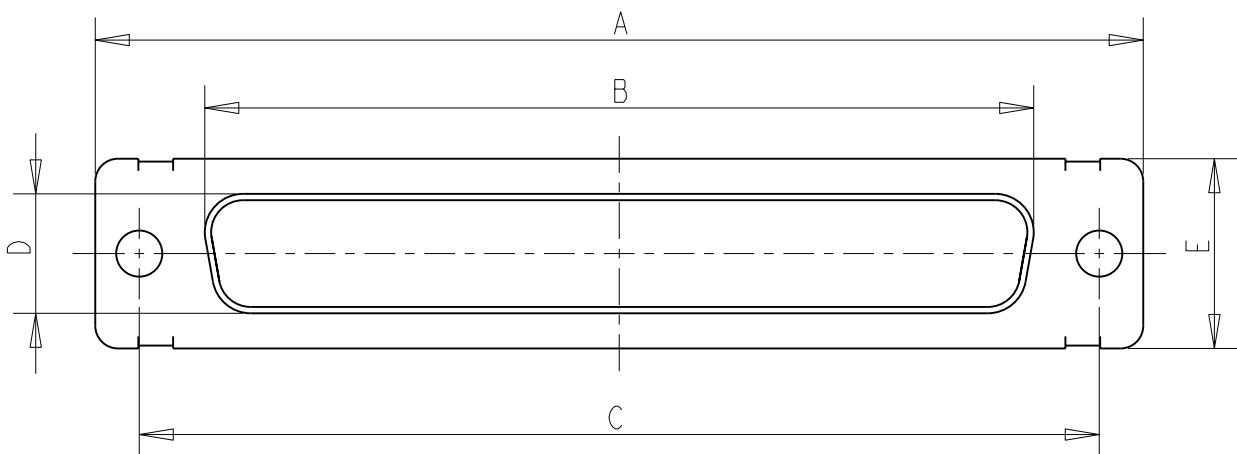
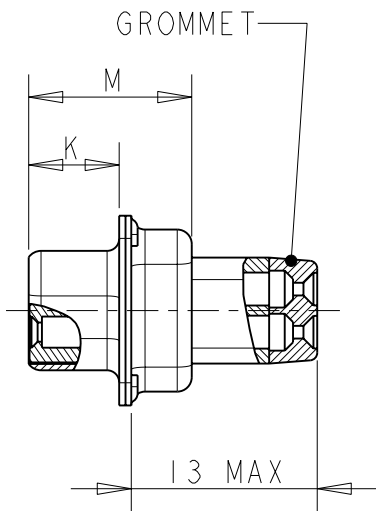
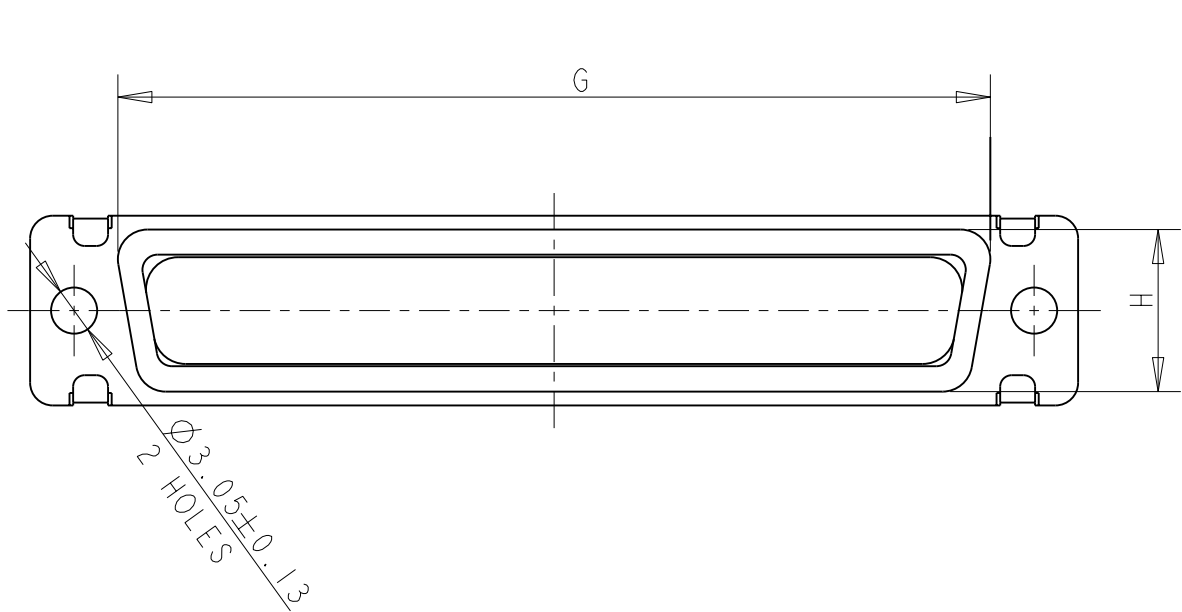


|     |      |           |     |   |           |     |      |
|-----|------|-----------|-----|---|-----------|-----|------|
| 2   |      | 1         |     |   |           |     |      |
| LOC | DIST | REVISIONS |     |   |           |     |      |
| F   | 00   | P         | LTR | DESCRIPTION                               | DATE      | DWN | APVD |
|     |      |           | G   | CLARIFICATIONS                            | 30JUN2009 | JT  | YP   |
|     |      |           | H   | 13 WAS 11.9 MAX. UPDATE NOTE 5 AND FORMAT | 20OCT2011 | JT  | YP   |
|     |      |           |     |   |           |     |      |
|     |      |           |     |   |           |     |      |



|        |        |        |        |        |        |        |        |        |                                     |         |      |                 |            |
|--------|--------|--------|--------|--------|--------|--------|--------|--------|-------------------------------------|---------|------|-----------------|------------|
| 10.90  | 6.17   | 55.32  | 13.56  | 15.37  | 10.74  | 61.11  | 52.43  | 66.93  | RECEPTACLE WITH #20 SOCKET CONTACTS | 50      | 5    | MDP308GF - 50S2 | 6-135760-0 |
| 10.90  | 6.17   | 57.71  | 10.72  | 12.55  | 7.90   | 63.50  | 54.84  | 69.32  | RECEPTACLE WITH #20 SOCKET CONTACTS | 37      | 4    | MDP308GF - 37S2 | 9-135760-5 |
| 10.90  | 6.17   | 41.30  | 10.72  | 12.55  | 7.90   | 47.04  | 38.38  | 53.04  | RECEPTACLE WITH #20 SOCKET CONTACTS | 25      | 3    | MDP308GF - 25S2 | 5-135760-9 |
| 10.90  | 6.17   | 27.51  | 10.72  | 12.55  | 7.90   | 33.32  | 24.66  | 39.14  | RECEPTACLE WITH #20 SOCKET CONTACTS | 15      | 2    | MDP308GF - 15S2 | 5-135760-8 |
| 10.90  | 6.17   | 19.28  | 10.72  | 12.55  | 7.90   | 24.99  | 16.33  | 30.81  | RECEPTACLE WITH #20 SOCKET CONTACTS | 9       | 1    | MDP308GF - 9S2  | 9-135760-4 |
| M±0.25 | K±0.13 | G±0.25 | H±0.25 | E±0.38 | D±0.13 | C±0.13 | B±0.13 | A±0.38 | DESCRIPTION                         | NB POS. | SIZE | OLD P/N         | P/N<br>2   |

SCALE 6:1

FLOATING BUSHING

SEE NOTES ON LAST SHEET

THIS DRAWING IS A CONTROLLED DOCUMENT.

DIMENSIONS:  
mm

MATERIAL  
NOTE 3

TOLERANCES UNLESS OTHERWISE SPECIFIED:

0 PLC ±0.13  
1 PLC ±0.13  
2 PLC ±0.13  
3 PLC ±  
4 PLC ±  
ANGLES ±1  
FINISH NOTE 4

DWN  
Thierry CORRIOU  
CHK  
Yves PETRONIN  
APVD  
Miguel FURIO  
PRODUCT SPEC  
APPLICATION SPEC  
NOTE 7  
WEIGHT  
-  
CUSTOMER DRAWING

21APR2004  
21APR2004  
21APR2004

NAME  
SUB D RECEPTACLE WITH WIRE BUSHING MDP TYPE

SIZE  
A3

CAGE CODE  
00779

DRAWING NO  
C-135760

RESTRICTED TO  
-

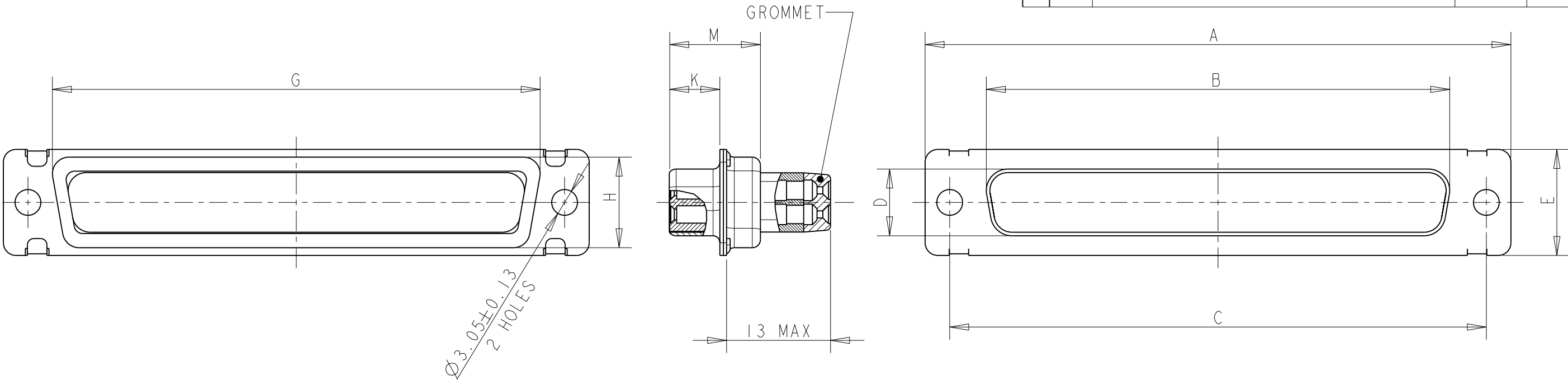
SCALE  
2:1

SHEET  
1

OF  
5

REV  
H

TE Connectivity



|              |              |              |              |              |              |              |              |              |                                     |         |      |                   |            |
|--------------|--------------|--------------|--------------|--------------|--------------|--------------|--------------|--------------|-------------------------------------|---------|------|-------------------|------------|
| 10.90        | 6.17         | 58.47        | 15.14        | 16.97        | 12.32        | 63.65        | 55.60        | 69.32        | RECEPTACLE WITH #22 SOCKET CONTACTS | 104     | 6    | MDP308G - 66104S2 | 7-135760-9 |
| 10.90        | 6.17         | 55.32        | 13.56        | 15.37        | 10.74        | 61.11        | 52.43        | 66.93        | RECEPTACLE WITH #22 SOCKET CONTACTS | 78      | 5    | MDP308G - 5078S2  | 9-135760-3 |
| 10.90        | 6.17         | 57.71        | 10.72        | 12.55        | 7.90         | 63.50        | 54.84        | 69.32        | RECEPTACLE WITH #22 SOCKET CONTACTS | 62      | 4    | MDP308G - 3762S2  | 9-135760-1 |
| 10.90        | 6.17         | 41.30        | 10.72        | 12.55        | 7.90         | 47.04        | 38.38        | 53.04        | RECEPTACLE WITH #22 SOCKET CONTACTS | 44      | 3    | MDP308G - 2544S2  | 6-135760-9 |
| 10.90        | 6.17         | 27.51        | 10.72        | 12.55        | 7.90         | 33.32        | 24.66        | 39.14        | RECEPTACLE WITH #22 SOCKET CONTACTS | 26      | 2    | MDP308G - 1526S2  | 8-135760-8 |
| 10.90        | 6.17         | 19.28        | 10.72        | 12.55        | 7.90         | 24.99        | 16.33        | 30.81        | RECEPTACLE WITH #22 SOCKET CONTACTS | 15      | 1    | MDP308G - 915S2   | 8-135760-6 |
| 10.90        | 6.17         | 55.32        | 13.56        | 15.37        | 10.74        | 61.11        | 52.43        | 66.93        | RECEPTACLE WITH #20 SOCKET CONTACTS | 50      | 5    | MDP308G - 50S2    | 5-135760-7 |
| 10.90        | 6.17         | 57.71        | 10.72        | 12.55        | 7.90         | 63.50        | 54.84        | 69.32        | RECEPTACLE WITH #20 SOCKET CONTACTS | 37      | 4    | MDP308G - 37S2    | 5-135760-6 |
| 10.90        | 6.17         | 41.30        | 10.72        | 12.55        | 7.90         | 47.04        | 38.38        | 53.04        | RECEPTACLE WITH #20 SOCKET CONTACTS | 25      | 3    | MDP308G - 25S2    | 5-135760-5 |
| 10.90        | 6.17         | 27.51        | 10.72        | 12.55        | 7.90         | 33.32        | 24.66        | 39.14        | RECEPTACLE WITH #20 SOCKET CONTACTS | 15      | 2    | MDP308G - 15S2    | 8-135760-3 |
| 10.90        | 6.17         | 19.28        | 10.72        | 12.55        | 7.90         | 24.99        | 16.33        | 30.81        | RECEPTACLE WITH #20 SOCKET CONTACTS | 9       | 1    | MDP308G - 9S2     | 5-135760-4 |
| M $\pm 0.25$ | K $\pm 0.13$ | G $\pm 0.25$ | H $\pm 0.25$ | E $\pm 0.38$ | D $\pm 0.13$ | C $\pm 0.13$ | B $\pm 0.13$ | A $\pm 0.38$ | DESCRIPTION                         | NB POS. | SIZE | OLD P/N           | P/N<br>2   |

SEE NOTES ON LAST SHEET

THIS DRAWING IS A CONTROLLED DOCUMENT.

DIMENSIONS:  
mm

MATERIAL  
NOTE 3

TOLERANCES UNLESS OTHERWISE SPECIFIED:

0 PLC ±0.13

1 PLC ±0.13

2 PLC ±0.13

3 PLC ±

4 PLC ±

ANGLES ±1

FINISH

NOTE 4

DWN  
Thierry CORRIOU  
CHK  
Yves PETRONIN  
APVD  
Miguel FURIO

21APR2004  
21APR2004  
21APR2004

PRODUCT SPEC  
-

APPLICATION SPEC  
NOTE 7

WEIGHT  
-

CUSTOMER DRAWING

NAME  
SUB D RECEPTACLE WITH WIRE BUSHING MDP TYPE

SIZE  
A3

CAGE CODE  
00779

DRAWING NO  
C-135760

RESTRICTED TO  
-

SCALE  
2:1

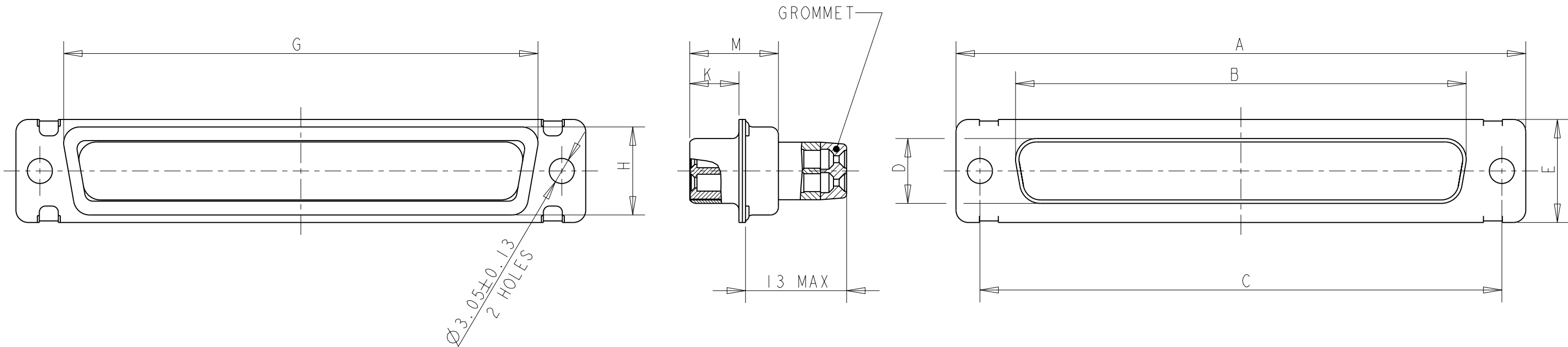
SHEET  
2

OF  
5

REV  
H

TE Connectivity

|     |      |           |     |             |      |     |      |
|-----|------|-----------|-----|-------------|------|-----|------|
| 2   |      | 1         |     |             |      |     |      |
| LOC | DIST | REVISIONS |     |             |      |     |      |
| F   | 00   | P         | LTR | DESCRIPTION | DATE | DWN | APVD |
|     |      |           | -   | SEE SHEET 1 | -    | -   | -    |
|     |      |           |     |             |      |     |      |
|     |      |           |     |             |      |     |      |
|     |      |           |     |             |      |     |      |



|        |        |        |        |        |        |        |        |        |                          |        |      |                         |            |
|--------|--------|--------|--------|--------|--------|--------|--------|--------|--------------------------|--------|------|-------------------------|------------|
| 10.90  | 6.17   | 58.47  | 15.14  | 16.97  | 12.32  | 63.65  | 55.60  | 69.32  | RECEPTACLE, HIGH DENSITY | 104    | 6    | MDP308G - 66104S2 - 001 | 8-135760-0 |
| 10.90  | 6.17   | 55.32  | 13.56  | 15.37  | 10.74  | 61.11  | 52.43  | 66.93  | RECEPTACLE, HIGH DENSITY | 78     | 5    | MDP308G - 5078S2 - 001  | 9-135760-2 |
| 10.90  | 6.17   | 57.71  | 10.72  | 12.55  | 7.90   | 63.50  | 54.84  | 69.32  | RECEPTACLE, HIGH DENSITY | 62     | 4    | MDP308G - 3762S2 - 001  | 9-135760-0 |
| 10.90  | 6.17   | 41.30  | 10.72  | 12.55  | 7.90   | 47.04  | 38.38  | 53.04  | RECEPTACLE, HIGH DENSITY | 44     | 3    | MDP308G - 2544S2 - 001  | 8-135760-9 |
| 10.90  | 6.17   | 27.51  | 10.72  | 12.55  | 7.90   | 33.32  | 24.66  | 39.14  | RECEPTACLE, HIGH DENSITY | 26     | 2    | MDP308G - 1526S2 - 001  | 8-135760-7 |
| 10.90  | 6.17   | 19.28  | 10.72  | 12.55  | 7.90   | 24.99  | 16.33  | 30.81  | RECEPTACLE, HIGH DENSITY | 15     | 1    | MDP308G - 915S2 - 001   | 8-135760-5 |
| 10.90  | 6.17   | 55.32  | 13.56  | 15.37  | 10.74  | 61.11  | 52.43  | 66.93  | RECEPTACLE               | 50     | 5    | MDP308G - 50S2 - 001    | 4-135760-5 |
| 10.90  | 6.17   | 57.71  | 10.72  | 12.55  | 7.90   | 63.50  | 54.84  | 69.32  | RECEPTACLE               | 37     | 4    | MDP308G - 37S2 - 001    | 4-135760-4 |
| 10.90  | 6.17   | 41.30  | 10.72  | 12.55  | 7.90   | 47.04  | 38.38  | 53.04  | RECEPTACLE               | 25     | 3    | MDP308G - 25S2 - 001    | 4-135760-6 |
| 10.90  | 6.17   | 27.51  | 10.72  | 12.55  | 7.90   | 33.32  | 24.66  | 39.14  | RECEPTACLE               | 15     | 2    | MDP308G - 15S2 - 001    | 4-135760-3 |
| 10.90  | 6.17   | 19.28  | 10.72  | 12.55  | 7.90   | 24.99  | 16.33  | 30.81  | RECEPTACLE               | 9      | 1    | MDP308G - 9S2 - 001     | 4-135760-2 |
| M±0.25 | K±0.13 | G±0.25 | H±0.25 | E±0.38 | D±0.13 | C±0.13 | B±0.13 | A±0.38 | DESCRIPTION              | NB POS | SIZE | OLD P/N                 | P/N<br>2   |

SEE NOTES ON LAST SHEET

THIS DRAWING IS A CONTROLLED DOCUMENT.

DIMENSIONS:  
mm

MATERIAL  
NOTE 3

TOLERANCES UNLESS OTHERWISE SPECIFIED:

0 PLC ±0.13

1 PLC ±0.13

2 PLC ±0.13

3 PLC ±

4 PLC ±

ANGLES ±1

FINISH

NOTE 4

DWN 21APR2004  
Thierry CORRIOU

CHK 21APR2004  
Yves PETRONIN

APVD 21APR2004  
Miguel FURIO

PRODUCT SPEC  
-

APPLICATION SPEC  
NOTE 7

WEIGHT  
-

CUSTOMER DRAWING

TE Connectivity

NAME  
SUB D RECEPTACLE  
WITH WIRE BUSHING  
MDP TYPE

SIZE  
A3

CAGE CODE  
00779

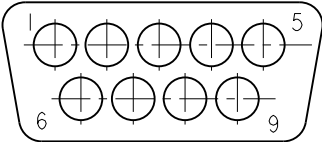
DRAWING NO  
C-135760

RESTRICTED TO  
-

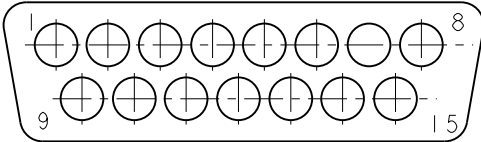
SCALE 2:1  
SHEET 3 OF 5  
REV H

| LOC | DIST | REVISIONS |     |             |      |     |      |
|-----|------|-----------|-----|-------------|------|-----|------|
|     |      | P         | LTR | DESCRIPTION | DATE | DWN | APVD |
| F   | 00   |           | -   | SEE SHEET 1 | -    | -   | -    |
|     |      |           |     |             |      |     |      |
|     |      |           |     |             |      |     |      |
|     |      |           |     |             |      |     |      |

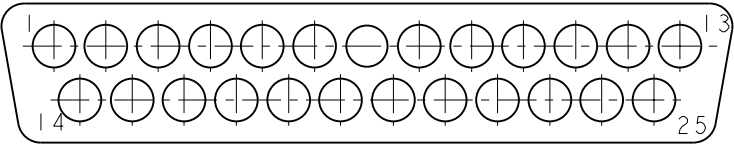
MATING FACE OF PLUG SHOWN  
CONFIGURATIONS FOR #20 CONTACTS



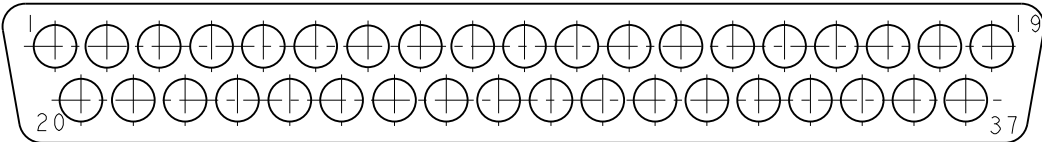
9 POSITION MS18273-1  
SHELL SIZE 1



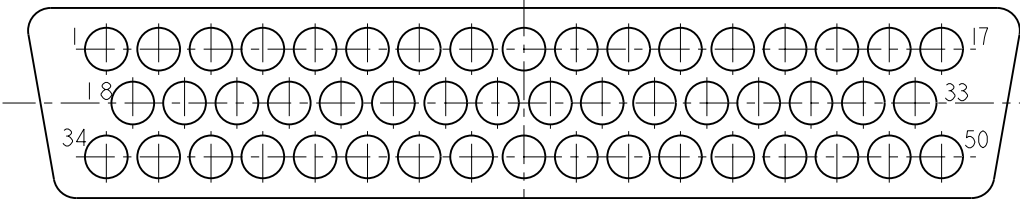
15 POSITION MS18274-1  
SHELL SIZE 2



25 POSITION MS18275-1  
SHELL SIZE 3

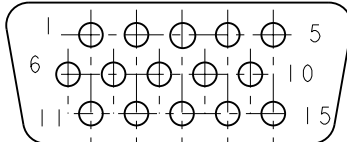


37 POSITION MS18276-1  
SHELL SIZE 4

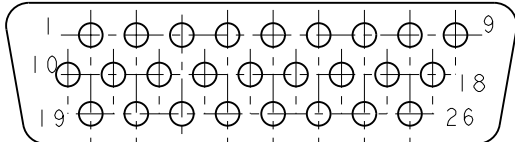


50 POSITION MS18277-1  
SHELL SIZE 5

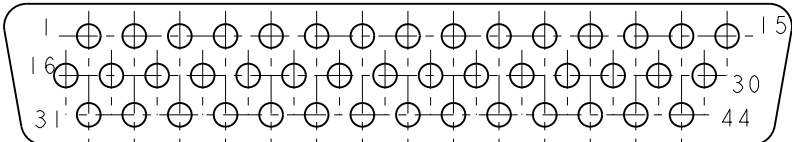
CONFIGURATIONS FOR #22 CONTACTS  
MATING FACE OF PLUG SHOWN



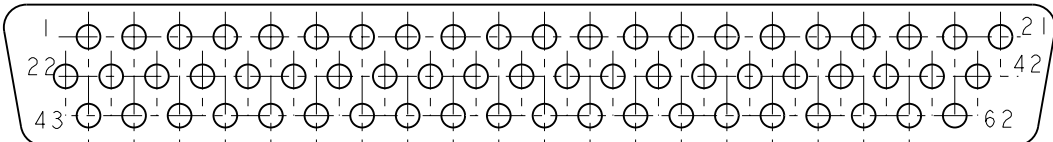
15 POSITION MS18273-2  
SHELL SIZE 1



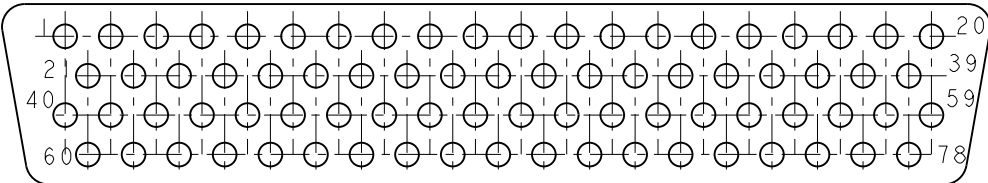
26 POSITION MS18274-2  
SHELL SIZE 2



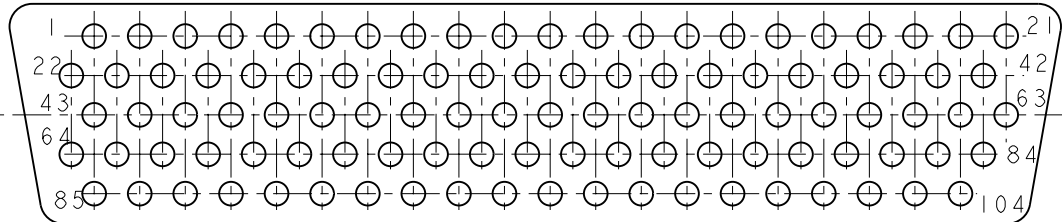
44 POSITION MS18275-2  
SHELL SIZE 3



62 POSITION MS18276-2  
SHELL SIZE 4



78 POSITION MS18277-2  
SHELL SIZE 5



104 POSITION MS14004-1  
SHELL SIZE 6

SEE NOTES ON LAST SHEET


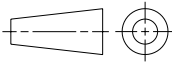
|  |  |  |   |            |                    |          |
|--|--|--|---|------------|--------------------|----------|
| THIS DRAWING IS A CONTROLLED DOCUMENT. |  | DWN<br>Thierry CORRIOU<br>CHK<br>Yves PETRONIN<br>APVD<br>Miguel FURIO<br>PRODUCT SPEC<br>-<br>APPLICATION SPEC<br>NOTE 7<br>WEIGHT<br>- | TE Connectivity   |            |                    |          |
| DIMENSIONS:<br>mm                      | TOLERANCES UNLESS OTHERWISE SPECIFIED:                                       |  | NAME<br>SUB D RECEPTACLE<br>WITH WIRE BUSHING<br>MDP TYPE |            |                    |          |
|  | 0 PLC ±0.13<br>1 PLC ±0.13<br>2 PLC ±0.13<br>3 PLC ±<br>4 PLC ±<br>ANGLES ±1 |  | SIZE<br>A3  |            |                    |          |
| MATERIAL<br>NOTE 3                     | FINISH<br>NOTE 4   |  | CAGE CODE<br>00779  |            |                    |          |
| CUSTOMER DRAWING                       |  |  | DRAWING NO<br>135760                                      |            | RESTRICTED TO<br>- |          |
|  |  |  | SCALE<br>1:1  | SHEET<br>4 | OF<br>5            | REV<br>H |

| LOC | DIST | REVISIONS |     |             |      |     |      |
|-----|------|-----------|-----|-------------|------|-----|------|
|     |      | P         | LTR | DESCRIPTION | DATE | DWN | APVD |
| F   | 00   |           | -   | SEE SHEET 1 | -    | -   | -    |
|     |      |           |     |             |      |     |      |
|     |      |           |     |             |      |     |      |
|     |      |           |     |             |      |     |      |

THIS CONNECTOR MEETS THE REQUIREMENTS OF MIL-DTL-24308

PART NUMBER FOR ORDERING

- 3- MATERIALS :
- SHELL : STEEL,CD PLATED
  - HOUSING : PBT,GLASS FILLED,UL94VO
  - RETAINING CLIP : STAINLESS STEEL
  - GROMMET AND INTERFACIAL SEAL : FLUOROSILICONE ELASTOMER
  - SEALING COMPOUND : RTV
  - CONTACT:COPPER ALLOY,GOLD PLATED OVER NICKEL
- 4- CABLES EXTERNAL DIAMETER FOR CONTACTS #20 :  $\varnothing 0.85$  to  $\varnothing 1.83$   
CABLES EXTERNAL DIAMETER FOR CONTACTS #22 :  $\varnothing 1.37$  MAX
- 5- CONNECTOR MARKING:
- . MANUFACTURER IDENTIFICATION
  - . PART NUMBER
  - . DATE-CODE
- 6- INSERT ARRANGEMENT PER MIL-DTL-24308
- 7- FOR CONTACT CRIMPING INSTRUCTION SHEET REFER TO SPEC IS 7516  
FOR CONTACT INSTALATION/ REMOVAL INSTRUCTION SHEET REFER TO SPEC IS 7508
- 8- #20 SOCKET CRIMP CONTACT P/N: 205090-1  
#20 PIN CRIMP CONTACT P/N: 205089-1
- #22D SOCKET CRIMP CONTACT P/N: 204351-1  
#22D PIN CRIMP CONTACT P/N: 204370-2
- 9- INSERTION/EXTRACTION TOOL P/N: 91067-2  
INSERTION/EXTRACTION TOOL P/N: 91067-1
- 10- CRIMP WITH HAND TOOL: 601966-1+ DIE INSERT : 601966-4  
CRIMP WITH HAND TOOL: M22520/02-01 + POSITIONNER : M22520/02-06

|   |  |  |  |   |  |
|---|--|--|--|---|--|
| THIS DRAWING IS A CONTROLLED DOCUMENT.  |  | DWN 21APR2004<br>Thierry CORRIOU   |  |  TE Connectivity |  |
|   |  | CHK 21APR2004<br>Yves PETRONIN   |  |   |  |
| DIMENSIONS:<br>mm   |  | TOLERANCES UNLESS OTHERWISE SPECIFIED:                                       |  | NAME<br>SUB D RECEPTACLE<br>WITH WIRE BUSHING<br>MDP TYPE   |  |
|  |  | 0 PLC ±0.13<br>1 PLC ±0.13<br>2 PLC ±0.13<br>3 PLC ±<br>4 PLC ±<br>ANGLES ±1 |  | APVD 21APR2004<br>Miguel FURIO  |  |
|   |  | MATERIAL NOTE 3  |  | FINISH NOTE 4   |  |
|   |  | PRODUCT SPEC<br>-  |  | SIZE<br>A3  |  |
|   |  | APPLICATION SPEC<br>NOTE 7   |  | CAGE CODE<br>00779  |  |
|   |  | WEIGHT<br>-  |  | DRAWING NO<br>C-135760  |  |
|   |  | CUSTOMER DRAWING   |  | RESTRICTED TO<br>-  |  |
|   |  | SCALE 1:1  |  | SHEET 5 OF 5  |  |
|   |  |  |  | REV H   |  |

# Mouser Electronics

Authorized Distributor

Click to View Pricing, Inventory, Delivery & Lifecycle Information:

[TE Connectivity:](#)

[5-135760-6](#)