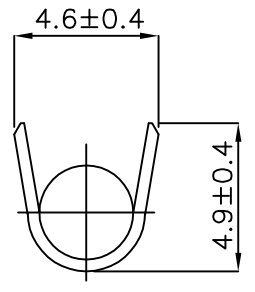
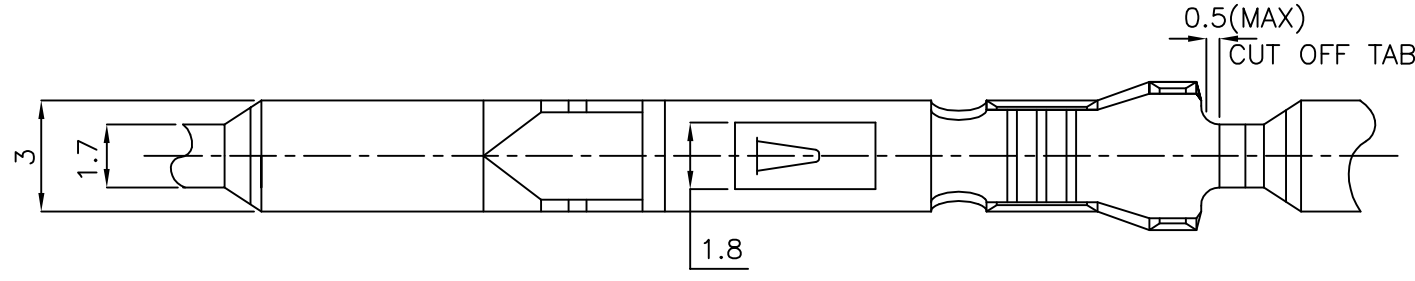
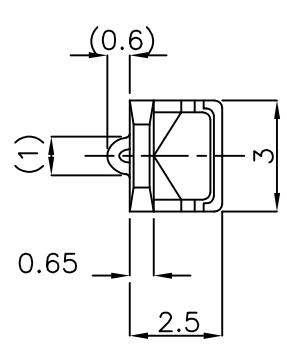


THIS DRAWING IS UNPUBLISHED.

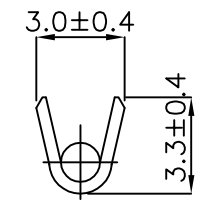
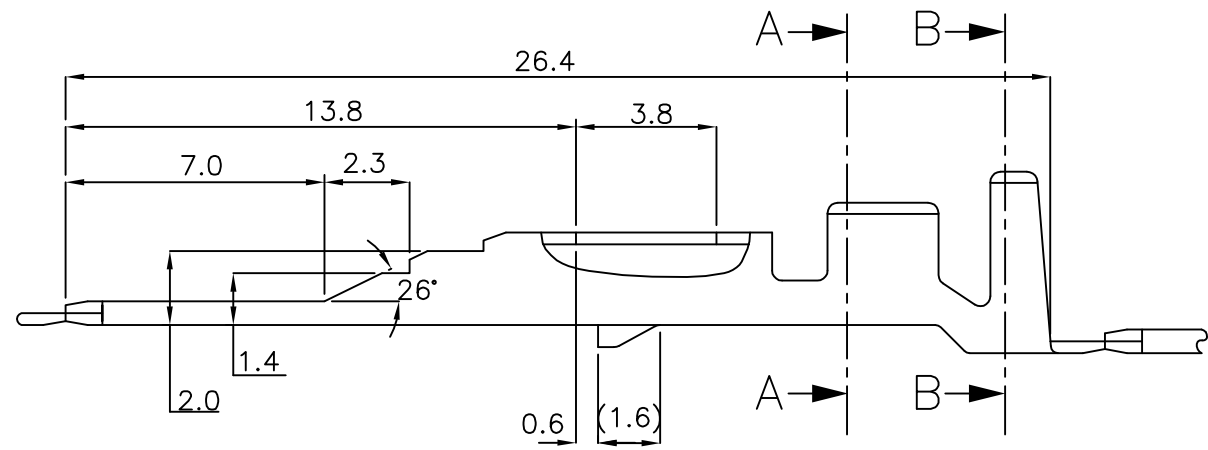
RELEASED FOR PUBLICATION

© COPYRIGHT BY TYCO ELECTRONICS CORPORATION, ALL RIGHTS RESERVED.

LOC	DIST	REVISIONS			
P	LTR	DESCRIPTION	DATE	DWN	APVD
DS	-				
		RELEASED	24.JUL.'96	YM	CS
		REVISED (ECR-16-004561)	29.MAR.'16	KT.J	KT.L



SECTION B-B



SECTION A-A

- * NOTE *
1. APPLICABLE REC. P/N : 172775 / 172773
 2. APPLICABLE HOUSING P/N : 172518. ETC.

85034-1	PRE-TIN BRASS	
PART NO.	MATERIAL	FINISH

<small>THIS DRAWING IS A CONTROLLED DOCUMENT FOR TYCO ELECTRONICS CORPORATION IT IS SUBJECT TO CHANGE AND THE CONTROLLING ENGINEERING ORGANIZATION SHOULD BE CONTACTED FOR THE LATEST REVISION.</small>		DWN KT JUNG CHK KT JUNG APVD KT LIM PRODUCT SPEC 108-61003 APPLICATION SPEC 114-61001 WEIGHT A3 00779C=85034 CUSTOMER DRAWING		TE Connectivity NAME MIC MK-II TAB CONTACT SIZE A3 CAGE CODE 00779C DRAWING NO 85034 RESTRICTED TO - SCALE 5/1 SHEET 1 OF 1 REV A	
DIMENSIONS: MM	TOLERANCES UNLESS OTHERWISE SPECIFIED:				
	0 <XX<10 ± 0.2 10 ≤ XX < 30 ± 0.25 30 ≤ XX < 100 ± 0.3 ANGLES ± 3°				
MATERIAL SEE TABLE	FINISH SEE TABLE				

Mouser Electronics

Authorized Distributor

Click to View Pricing, Inventory, Delivery & Lifecycle Information:

[TE Connectivity:](#)

[85034-1](#) [85034-1 \(Mouser Reel\)](#)