

THIS DRAWING IS UNPUBLISHED.

RELEASED FOR PUBLICATION

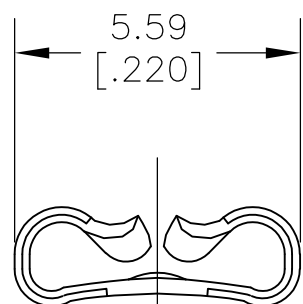
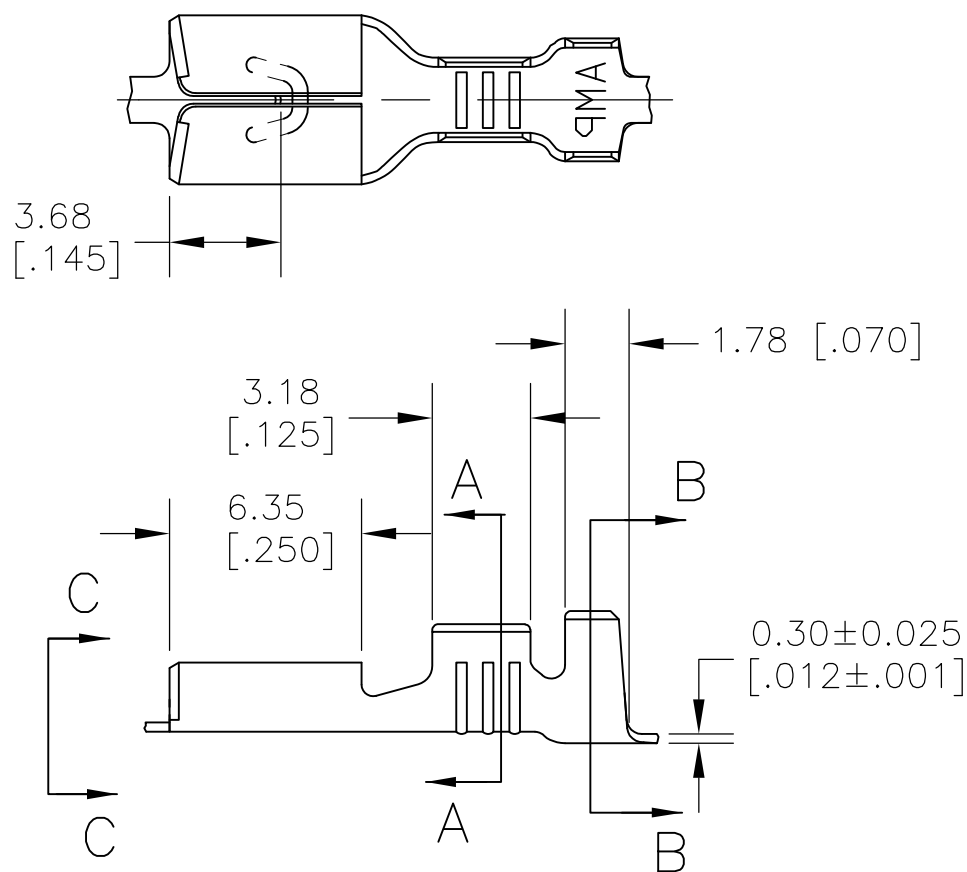
ALL RIGHTS RESERVED.

© COPYRIGHT - By -

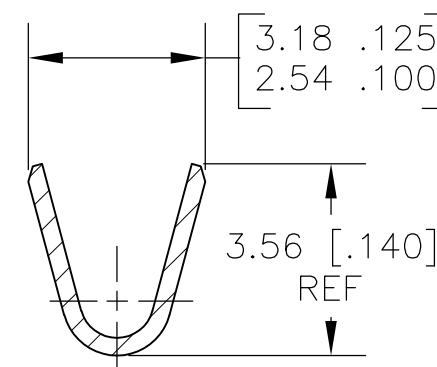
REVISIONS

P	LTR	DESCRIPTION	DATE	DWN	APVD
	A6	REVISED PER ECR-18-004893	02MAY2018	BDA	DH

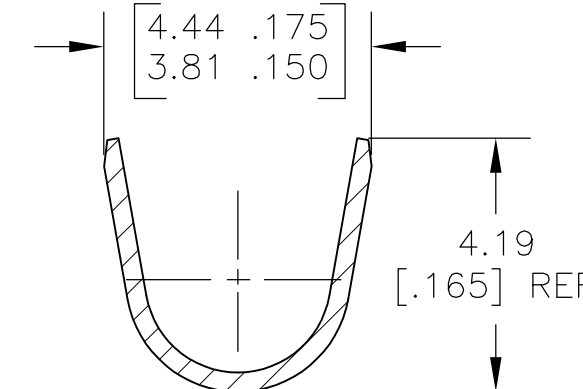
- 1 CONTINUOUS STRIP ON REELS.
- 2 WIRE SIZE #20-#16 AWG
- 3 INSULATION RANGE 2.29-3.30 [.090-.130] DIA
- 4 MATING TAB THK 0.81±0.025 [.032±.001]
- 5 UL APPROVAL FOR AWG 20-16
- 6 UL APPROVAL PENDING FOR AWG 20-16
- 7 OBSOLETE/SUPERSEDED BY PN 2238198-3



VIEW C-C
SCALE 8:1



SECTION A-A
SCALE 8:1



SECTION B-B
SCALE 8:1

7	6	TIN	BRASS	1742883-3
	5	NICKEL PLATE	CR STEEL	1742883-1
		FINISH	MATERIAL	PART NO

THIS DRAWING IS A CONTROLLED DOCUMENT.		DWN jr_ruth 03MAR11	TE Connectivity RECEPTACLE , FASTON, .187 SERIES				
DIMENSIONS: MM [INCHES]		CHK PETE DESANTIS 03MAR11				NAME	RESTRICTED TO
TOLERANCES UNLESS OTHERWISE SPECIFIED:		APVD PETE DESANTIS 03MAR11				SIZE	CAGE CODE
0 PLC ± - 1 PLC ± - 2 PLC ± 0.25 [.010] 3 PLC ± - 4 PLC ± - ANGLES ± 5°		PRODUCT SPEC				DRAWING NO	REV
MATERIAL SEE TABLE		FINISH SEE TABLE	APPLICATION SPEC	WEIGHT	SCALE		
			SIZE	CAGE CODE	DRAWING NO		
			A3	00779	C-1742883		
			CUSTOMER DRAWING	SCALE	SHEET		
				4:1	1 OF 1		
					REV A6		

Mouser Electronics

Authorized Distributor

Click to View Pricing, Inventory, Delivery & Lifecycle Information:

[TE Connectivity:](#)

[1742883-1](#) [1742883-1 \(Cut Strip\)](#) [1742883-1 \(Mouser Reel\)](#)