

PLEASE CHECK WWW.MOLEX.COM FOR LATEST PART INFORMATION

Part Number: **5024265010**
Status: **Active**
Overview: SlimStack™ 0.40mm Pitch Board-to-Board Connectors
Description: 0.40mm Pitch SlimStack Board-to-Board Receptacle, Surface Mount, Dual Row, Vertical, 1.00mm Stacking Height, with Solder Tabs, 50 Circuits

Documents:

| | |
|---|--|
| 3D Model | Product Specification PS-502430-001-001 (PDF) |
| Drawing (PDF) | Packaging Specification SPK-502426-001-001 (PDF) |
| Product Specification PS-502426-001-001 (PDF) | RoHS Certificate of Compliance (PDF) |

General

| | |
|----------------|---|
| Product Family | PCB Receptacles |
| Series | 502426 |
| Application | Board-to-Board, Signal |
| Overview | SlimStack™ 0.40mm Pitch Board-to-Board Connectors |
| Product Name | SlimStack |
| UPC | 800756714318 |

Physical

| | |
|--------------------------------|-----------------------|
| Circuits (Loaded) | 50 |
| Circuits (maximum) | 50 |
| Color - Resin | Black |
| Durability (mating cycles max) | 30 |
| Glow-Wire Capable | No |
| Lock to Mating Part | Yes |
| Mated Height | 1.00mm |
| Material - Metal | Phosphor Bronze |
| Material - Plating Mating | Gold |
| Material - Plating Termination | Gold |
| Net Weight | 48.341/mg |
| Number of Rows | 2 |
| Orientation | Vertical |
| PCB Locator | No |
| PCB Retention | Yes |
| Packaging Type | Embossed Tape on Reel |
| Pitch - Mating Interface | 0.40mm |
| Polarized to Mating Part | No |
| Polarized to PCB | No |
| Stackable | No |
| Temperature Range - Operating | -25° to +85°C |
| Termination Interface: Style | Surface Mount |

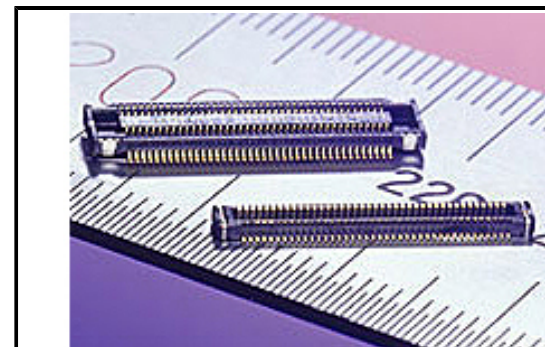
Electrical

| | |
|-------------------------------|-----------|
| Current - Maximum per Contact | 0.3A |
| Voltage - Maximum | 50V AC/DC |

Material Info

Reference - Drawing Numbers

| | |
|-------------------------|--------------------------------------|
| Packaging Specification | SPK-502426-001-001 |
| Product Specification | PS-502426-001-001, PS-502430-001-001 |
| Sales Drawing | SD-502426-001, SD-502426-002 |



Series image - Reference only

EU ELV

Not Relevant

EU RoHS

Compliant

REACH SVHC

Not Contained Per -
ED/61/2018 (27 June
2018)

Halogen-Free

Status

Low-Halogen

Need more information on product environmental compliance?

Email productcompliance@molex.com
Please visit the [Contact Us](#) section for any non-product compliance questions.

| | |
|-----------------|---------------|
| China ROHS | Green Image |
| ELV | Not Relevant |
| RoHS Phthalates | Not Contained |

Search Parts in this Series

[502426](#) Series

Mates With

[502430](#) PCB Header

Mouser Electronics

Authorized Distributor

Click to View Pricing, Inventory, Delivery & Lifecycle Information:

[Molex:](#)

[502426-5010](#)