

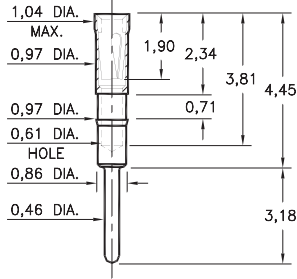
PIN RECEPTACLES

**FOR 0,38 - 0,46 DIAMETER PINS (#09 CONTACT)
FOR 0,38 - 0,51 DIAMETER PINS (#11 CONTACT)
AND 0,38 - 0,56 DIAMETER PINS (#21 CONTACT)**

0467

0467-0-15-XX-21-XX-04-0

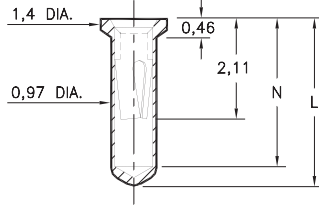
Press-fit in 0,94 mounting hole



0552

0552-X-15-XX-X1-XX-10-0

Solder mount in 1,02 min. mounting hole
Also available on 16mm wide carrier tape:
1,500 parts per 330mm reel
See page 194.2 for Tape & Reel details

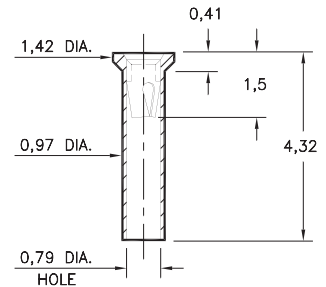


| Basic Part Number | Length L | Depth N |
|-------------------|----------|---------|
| 0552-1 | 3,45 | 3,05 |
| 0552-2 | 4,32 | 3,81 |

5522

5522-0-15-XX-09-XX-10-0

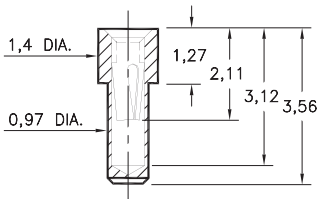
Solder mount in 1,02 min. mounting hole



0569

0569-0-15-XX-X1-XX-10-0

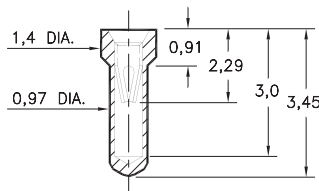
Solder mount in 1,02 min. mounting hole
Also available on 16mm wide carrier tape:
2,000 parts per 330mm reel
See page 194.2 for Tape & Reel details



6023

6023-0-15-XX-21-XX-10-0

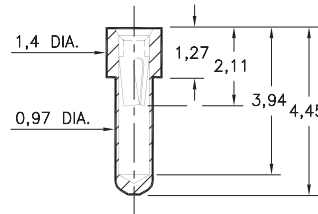
Solder mount in 1,02 min. mounting hole



6214

6214-0-15-XX-21-XX-10-0

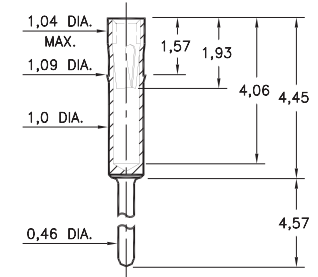
Solder mount in 1,02 min. mounting hole



2086

2086-0-15-XX-21-XX-04-0

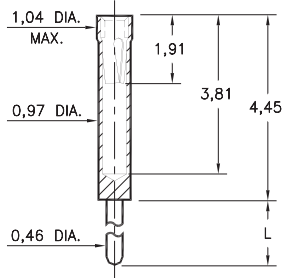
Press-fit in 1,02 mounting hole



0461

0461-X-15-XX-X1-XX-04-0

Solder mount in 0,51 min. mounting hole

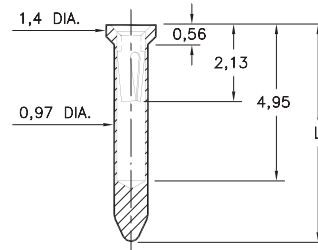


| Basic Part Number | Length L |
|-------------------|----------|
| 0461-0 | 10,16 |
| 0461-1 | 6,99 |
| 0461-2 | 4,57 |
| 0461-3 | 3,18 |
| 0461-4 | 1,52 |
| 0461-5 | 11,18 |

8579

8579-X-15-XX-X1-XX-10-0

Solder mount in 1,02 min. mounting hole
Also available on 24mm wide carrier tape
See chart for details
See page 194.2 for Tape & Reel details



| Basic Part Number | Length L |
|-------------------|----------|
| 8579-0 | 5,94 |
| 8579-1 | 7,49 |

T&R Packaging

| Basic Part Number | Tape Width | Parts per 330mm Reel |
|-------------------|------------|----------------------|
| 8579-0 | 24mm | 1,200 |
| 8579-1 | 24mm | 1,000 |

SPECIFICATIONS:

Shell Material: Brass Alloy 360, 1/2 Hard

Contact Material: Beryllium Copper Alloy 172, HT

Dimensions: Millimeters

Tolerances On: Lengths: ± 0,13
Diameters: ± 0,051
Angles: ± 2°



ORDER CODE: XXXX - X - XX - XX - XX - XX - 0

BASIC PART #

SPECIFY SHELL FINISH:

- 01 5,08µm TIN/LEAD OVER NICKEL
- ◆ 80 5,08µm TIN OVER NICKEL (RoHS)
- ◆ 15 0,25µm GOLD OVER NICKEL (RoHS)

SPECIFY CONTACT FINISH:

- 02 2,54µm TIN/LEAD OVER NICKEL
- ◆ 84 2,54µm TIN OVER NICKEL (RoHS)
- ◆ 27 0,76µm GOLD OVER NICKEL (RoHS)

SELECT CONTACT:

#09, #11 or #21 CONTACT (DATA ON PAGES 250 & 251)
(For alternate contact choices, see group A on page 248)



Mouser Electronics

Authorized Distributor

Click to View Pricing, Inventory, Delivery & Lifecycle Information:

[Mill-Max:](#)

[0467-0-15-15-21-27-04-0](#) [0461-0-15-15-21-27-04-0](#)