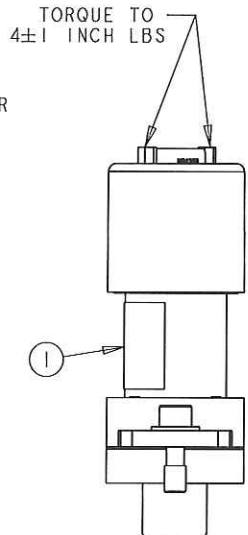
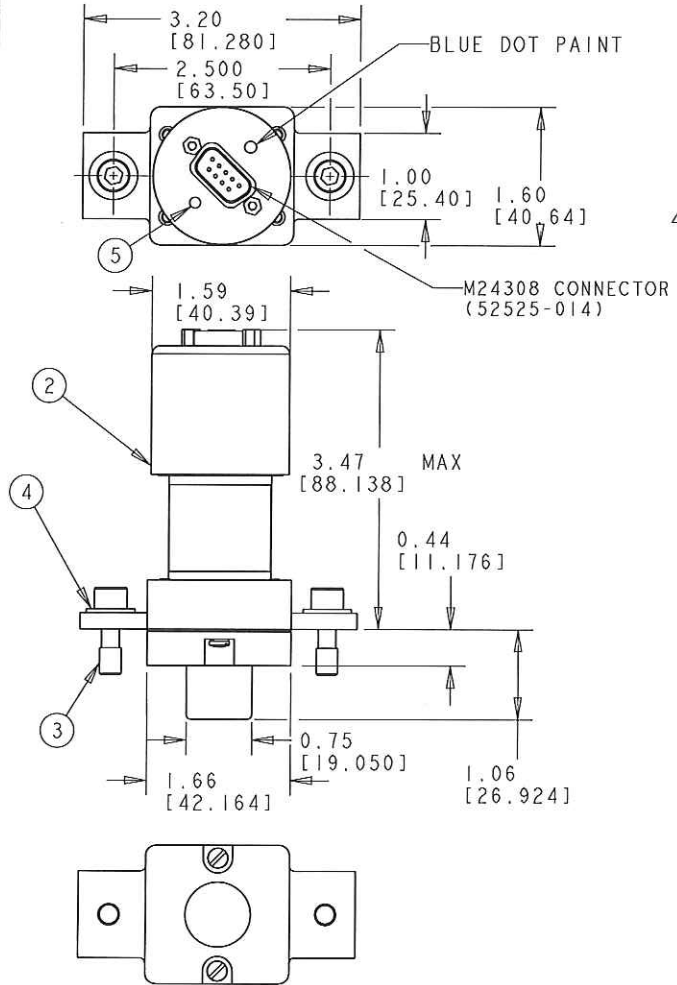


USED ON

DWG NO 7-1616946-0
THIS DRAWING IS A CONTROLLED DOCUMENT



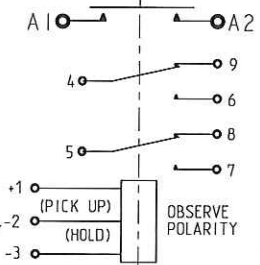
CONSTRUCTION
MAIN CONTACTS
 CONFIGURATION SPST N.O (DOUBLE BREAK)
 VOLTAGE (NOMINAL) 28VDC
 CURRENT 500 AMPS
 RESISTIVE 4000 AMPS
 RUPTURE 750 AMPS 5 MIN 1000 AMPS 5 SEC
 OVERLOAD 100 mV MAX AT 500 AMPS
 VOLTAGE DROP

AUXILIARY CONTACTS
 CONFIGURATION 2 SPDT
 VOLTAGE 28VDC
 CURRENT 7 AMP MAX CONTACT (5,8)
 RESISTIVE 1 mA MIN CONTACTS (4,6), (4,9)
 LOW LEVEL AND (5,7) - SEE NOTE 2

COIL DATA
 DUTY CYCLE CONTINUOUS
 NOM. OPERATE VOTAGE 28VDC
 MAX. PICKUP VOTAGE 18VDC MAX 85°C
 DROPOUT VOTAGE 10VDC MAX 120°C
 COIL CURRENT:
 INRUSH 7.8 AMPS MAX AT 32 VDC @ -55°C
 HOLD 272mA MAX AT 32 VDC @ -55°C
 OPERATE TIME .045 SEC MAX AT 18 VDC @ 85°C
 RELEASE TIME .025 SEC MAX AT 32 VDC

ENVIRONMENTAL DATA
 TEMPERATURE -55°C TO 85°C (WITH TRANSIENTS TO 120°C)
 ALTITUDE 51,000 FEET

LIFE ELECTRICAL 50,000 CYCLES MIN.
LIFE MECHANICAL 100,000 CYCLES MIN.
WEIGHT, MAX. .85 LBS. (0.39Kg)



SEE NOTE 8

- NOTES:**
- AUX. CONTACTS GOLD PLATED.
 - LOW LEVEL RATING NOT APPLICABLE AFTER APPLICATION OF CURRENT GREATER THAN 125 mA.
 - REF. GOODRICH EQUIP. SPEC 15-200098 FOR OTHER PARAMETERS.
 - REF. PRACTICAL WIRING DIAGRAM (DWG NO. TO BE ASSIGNED)
 - CONTACTOR MEETS MATERIAL AND WORKMANSHIP REQUIREMENTS OF MIL-PRF-6106L.
 - VIBRATION LEVEL (CAT S, SECTION 8 OF RTCA D0160D)-AMPLIFICATION FACTOR TBD.
 - ACCELERATION LEVEL (CAT B, SECTION 7 OF RTCA D0160D)
 - PICKUP MUST BE LIMITED TO 150ms ACROSS PINS 1 & 2.

5	1	57200-057	YELLOW DOT			1-1616374-8
4	2	51807-430	WASHER, BELLEVILLE 1/4			6-1616949-6
3	2	47362-001	SOCKET CAP TERMINAL SCREW			7-1616922-4
2	1	46095-030	CONTACTOR ASSEMBLY PRIMARY			2-1616922-9
1	1	47363-001	NAME PLATE			1-1616992-6

CAGE CODE: 76043				DWN 01MAR2016		MATERIAL		HEAT TREAT	
Horizon 175 N. BIRCHWOOD STREET MANSFIELD, OHIO 44902				MR					
DIMENSIONS: INCHES [mm]				CHK 01MAR2016					
TOLERANCES UNLESS OTHERWISE SPECIFIED:				RV					
0 PLC ±				APVD 01MAR2016		RS		TE Connectivity	
1 PLC ±									
2 PLC ±0.02									
3 PLC ±0.005									
4 PLC ±									
ANGLES ±									
SURFACE TEXTURE									
				SCALE		SIZE A3		DRAWING NO 7-1616946-0	
								SHEET 1 OF 1	
								REV D	

D	UPDATED BOM AND BALLOONS	4/13/2016	RSS	RS
C	ITEM 5 ADDED TO BOM, REDRAWN	01MAR2016	MR	RS
B	ITEM 4 WAS 51807-340	17OCT2005	CB	RS
LTR	REVISION RECORD	DATE	DWN	APVD

THIS INFORMATION IS CONFIDENTIAL AND PROPRIETARY TO TYCO ELECTRONICS CORPORATION AND ITS WORLDWIDE SUBSIDIARIES AND AFFILIATES (TE). IT MAY NOT BE DISCLOSED TO ANYONE OTHER THAN TE PERSONNEL, WITHOUT AUTHORIZATION FROM TE (www.te.com).

Mouser Electronics

Authorized Distributor

Click to View Pricing, Inventory, Delivery & Lifecycle Information:

[TE Connectivity:](#)

[K500B4B01](#)