

4

3

2

1

THIS DRAWING IS UNPUBLISHED.

RELEASED FOR PUBLICATION

© COPYRIGHT

ALL RIGHTS RESERVED.

LOC

DIST

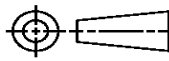
REVISIONS


| P | LTR | DESCRIPTION | DATE | DWN | APVD |
|---|-----|---------------|-----------|-----|------|
| | C1 | ECR-16-009823 | 20JUL2016 | GK | SD |
| | | | | | |
| | | | | | |
| | | | | | |

REPLACED BY OCEAN STYLE APPLICATOR PART
NUMBER 2836135-2

FOR REPLACEMENT PARTS FOR APPLICATOR 1426441
REFER TO ADDITIONAL PAGE(S). SPARE PARTS KIT (IF LISTED)
WILL REMAIN AVAILABLE.

THE REPLACEMENT OCEAN STYLE APPLICATOR HAS THE
SAME TERMINATOR/PRESS INTERFACE AS APPLICATOR
1426441

| | | | | | | | |
|---|--|------------------|------------------|-----------|------------|--------------|---------------|
| THIS DRAWING IS A CONTROLLED DOCUMENT. | | DWN | GOPALAKRISHNA HV | | | | |
| | | CHK | GOPALAKRISHNA HV | | | | |
| DIMENSIONS: | | APVD | STOUGH DALE | | | | |
|  | | PRODUCT SPEC | | | | | |
| | | APPLICATION SPEC | | | | | |
| | | WEIGHT | | | | | |
| MATERIAL | | SIZE | | CAGE CODE | DRAWING NO | | RESTRICTED TO |
| | | A 3 | | | C- 1426441 | | |
| | | CUSTOMER DRAWING | | | SCALE | SHEET 1 OF 2 | REV C1 |



1. RECOMMENDED SPARE PARTS.
2. GREASE RAM, CAM, CAM FOLLOWER AND FEED ROD LIGHTLY.
3. LUBRICATE DAILY PER THE APPLICATOR INSTRUCTION SHEET SUPPLIED WITH THE APPLICATOR.

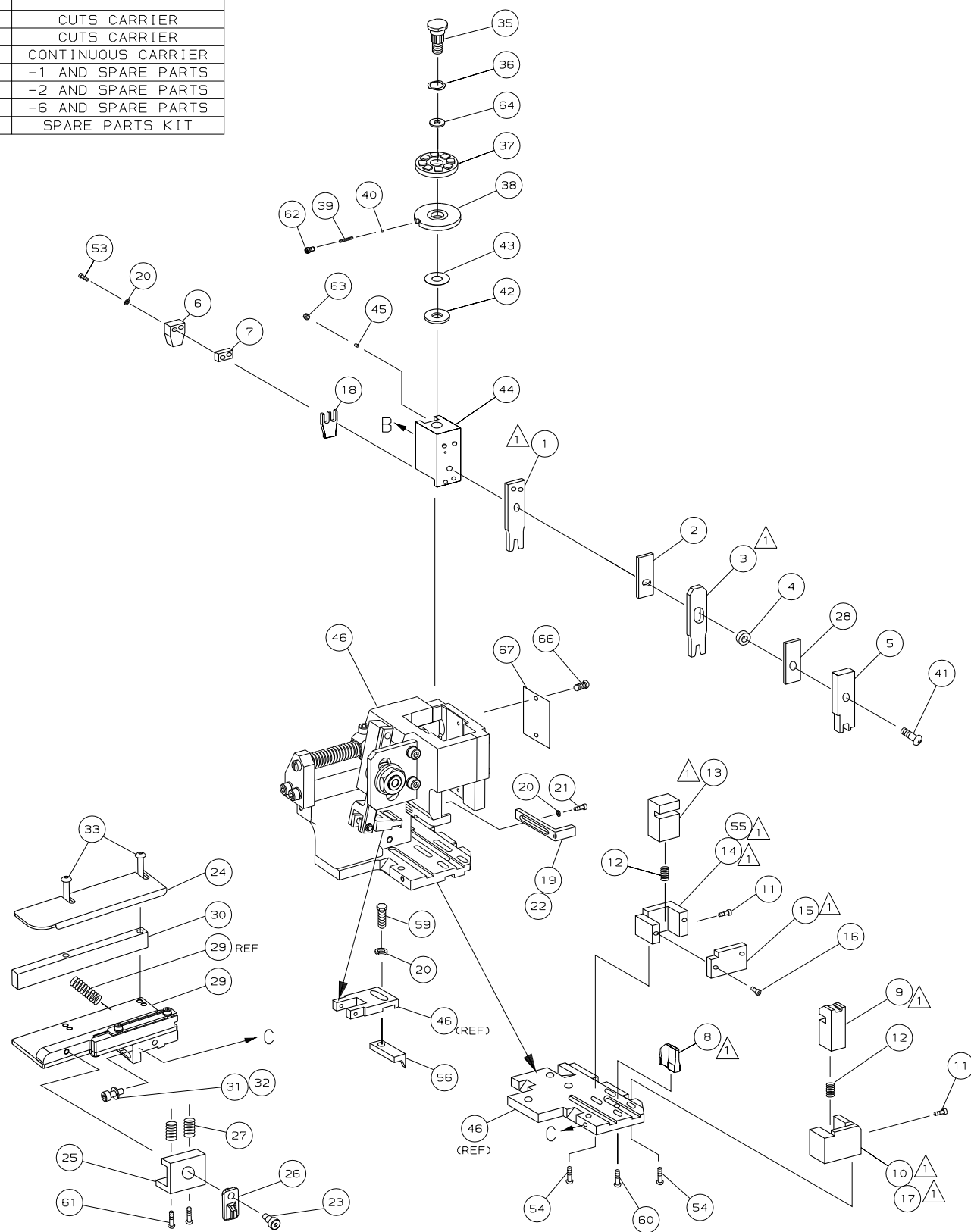


Diagram illustrating a short position guide off wire barrel. The diagram shows a cross-section of a mechanical assembly with a horizontal guide rail and a vertical component. The text below the diagram reads: SHORT POSITION GUIDE OFF WIRE BARREL.

DRAWING NUMBER - 1426441 SHEET 2 OF 2 REV. C1

Mouser Electronics

Authorized Distributor

Click to View Pricing, Inventory, Delivery & Lifecycle Information:

[TE Connectivity:](#)

[1426441-1](#)