

THIS DRAWING IS UNPUBLISHED.

RELEASED FOR PUBLICATION

© COPYRIGHT - BY TYCO ELECTRONICS CORPORATION. ALL RIGHTS RESERVED.

LOC	DIST	REVISIONS				
GP	00	P	LTR	DESCRIPTION	DATE	APVD
			A	RELEASED	02MAR06	RG PM

6. FOR TERMINATION REFER TO 1926079-1

5 ROTATION ARC.

4. FINISH:

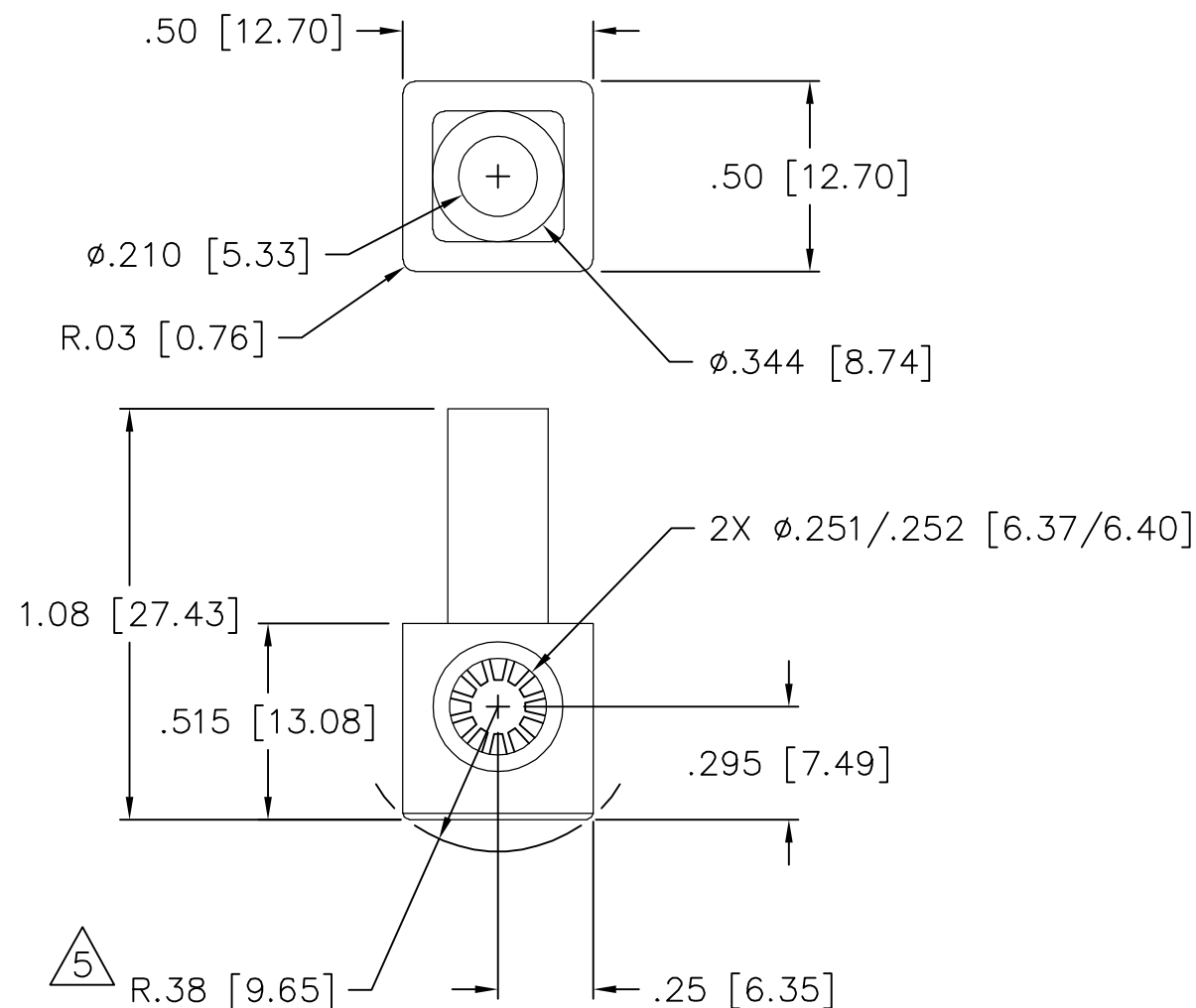
SOCKET HOUSING - SILVER PLATED .000200 MIN THK.
OVER ELECTROLESS NICKEL PLATE
.000040 MIN THK.CROWN - GOLD PLATED .000030 MIN THK OVER
ELECTROLESS NICKEL PLATE .000040 MIN. THK

3. MATERIAL:

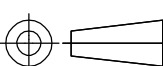
CROWN CONTACT - BERYLLIUM COPPER

SOCKET HOUSING - TELLURIUM COPPER ALLOY

INSULATOR - THERMOPLASTIC, 94V-0, COLOR PER TABLE

2. ITEMS PROVIDED TO THIS SPECIFICATION SHALL BE IDENTIFIED
ON THE CONTAINER WITH THE FOLLOWING INFORMATION:
PART NUMBER AND DATE CODE OF MANUFACTURE.1. PART NUMBER CHANGES AND/OR DESIGN CHANGES AFFECTING
ITEM INTERCHANGEABILITY REQUIRE PRIOR TYCO APPROVAL
AND AUTHORIZATION BY REVISION TO THIS DRAWING.

RED	6648235-2
BLACK	6648235-1
COLOR	PART NUMBER

THIS DRAWING IS A CONTROLLED DOCUMENT.		DWN R.GRZYBOWSKI		02MAR2006		<div>tyco</div> <div>Electronics</div>		Tyco Electronics Corporation					
		CHK M.PERCHERKE		02MAR06		Harrisburg, PA 17105-3608							
DIMENSIONS: INCHES		TOLERANCES UNLESS OTHERWISE SPECIFIED: 0 PLC ± - 1 PLC ± - 2 PLC ± .02 3 PLC ± .010 4 PLC ± - ANGLES ± .5		APVD M.PERCHERKE		02MAR06		NAME					
				PRODUCT SPEC		CROWN SOCKET, RIGHT ANGLE #4 SOCKET BODY W/ #8 CRIMP BARREL RAPID LOCK							
				APPLICATION SPEC									
				—									
				—									
MATERIAL —		FINISH —		WEIGHT —		SIZE A3		CAGE CODE 00779		DRAWING NO C-6648235		RESTRICTED TO —	
CUSTOMER DRAWING						SCALE 1:1		SHEET 1 OF 1		REV A			

Mouser Electronics

Authorized Distributor

Click to View Pricing, Inventory, Delivery & Lifecycle Information:

[TE Connectivity:](#)

[6648235-2](#)