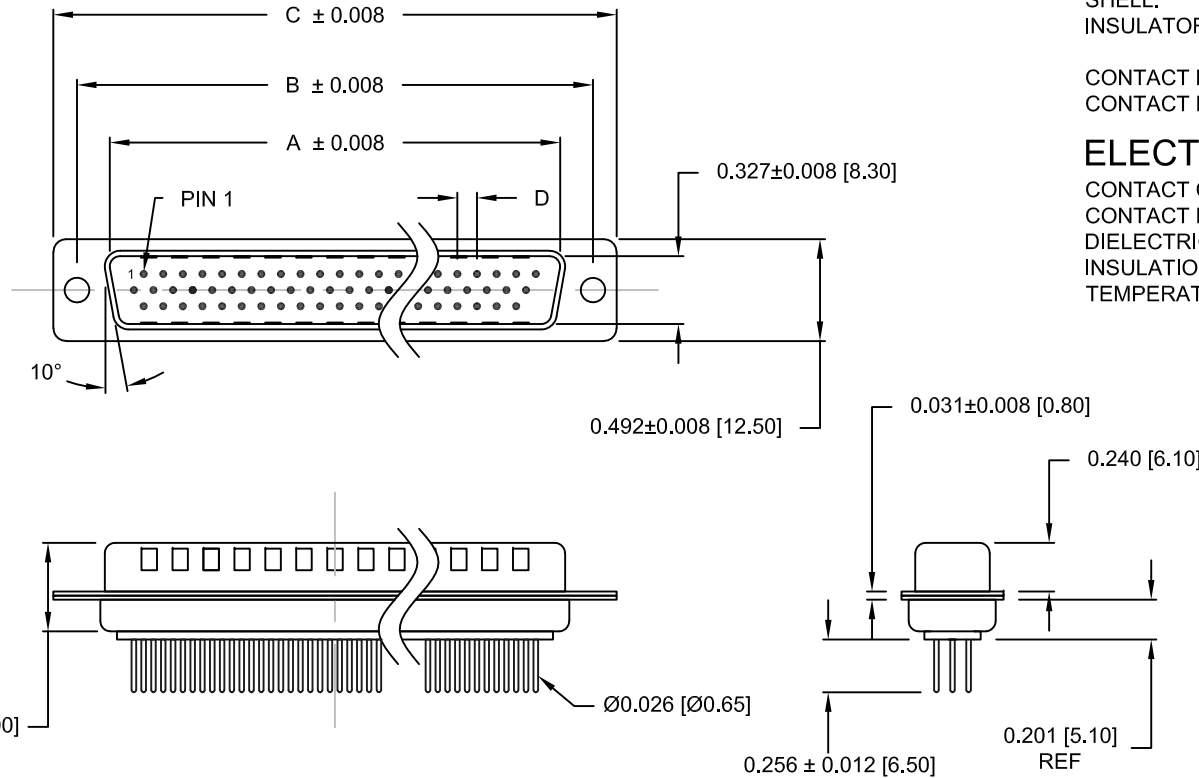


DESCRIPTION: HIGH DENSITY - MACHINED CONTACTS - VERTICAL

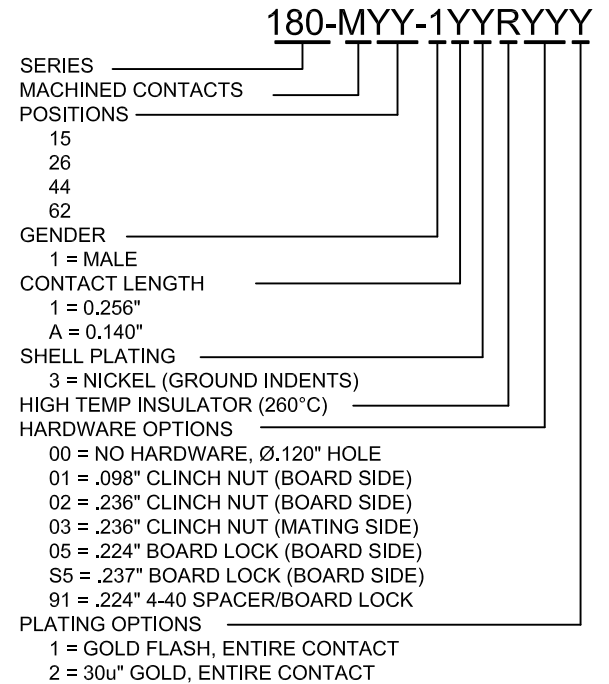


**MATERIALS AND FINISH:**

SHELL: STEEL MATERIAL, NICKEL FINISH  
 INSULATOR: (SEE DIM. CHART) = 260°C PROCESS TEMP, UL 94V-0 RATED, BLACK  
 CONTACT MATERIAL: BRASS  
 CONTACT FINISH: SEE PLATING PART NUMBER KEY BELOW

**ELECTRICAL:**

CONTACT CURRENT RATING: 5 AMPS  
 CONTACT RESISTANCE: 10 mOHMS Max.  
 DIELECTRIC WITHSTANDING VOLTAGE: 1,000VAC Min.  
 INSULATION RESISTANCE: 5 GOHMS Min.  
 TEMPERATURE RATING: -55° ~ +125° C



DIMENSIONS (in.)					
No. OF PINS	A	B	C	D	Insulator Material
15	0.665	0.984	1.213	0.090	PA9T
26	0.994	1.311	1.543	0.090	PA9T
44	1.533	1.852	2.089	0.090	PA9T
62	2.181	2.500	2.732	0.095	PA6T

DIMENSIONS (mm)					
No. OF PINS	A	B	C	D	Insulator Material
15	16.90	25.00	30.80	2.29	PA9T
26	25.25	33.30	39.20	2.29	PA9T
44	38.95	47.05	53.05	2.29	PA9T
62	55.40	63.50	69.40	2.41	PA6T

UNITS = INCHES [mm]

DO NOT SCALE FROM DRAWING



THESE DRAWINGS AND SPECIFICATIONS ARE THE PROPERTY OF NorComp AND SHALL NOT BE REPRODUCED, COPIED OR USED AS THE BASIS FOR THE MANUFACTURE OF SALE OF APPARATUS WITHOUT WRITTEN PERMISSION.

DRAWN: C. SMITH	DATE: 03-16-07
-----------------	----------------

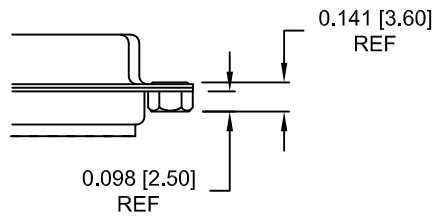
**NorComp**

SCALE: NTS	SHEET 1 OF 3	REV 20
DWG NO. 180-MYY-11YRYYY		

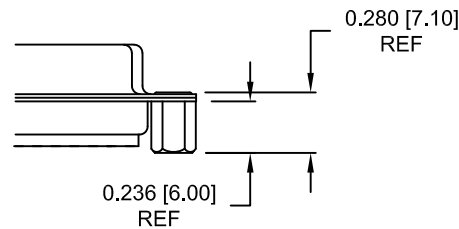
RoHS COMPLIANT

ALL CLINCH-NUTS ARE 4-40 INTERNAL THREADS

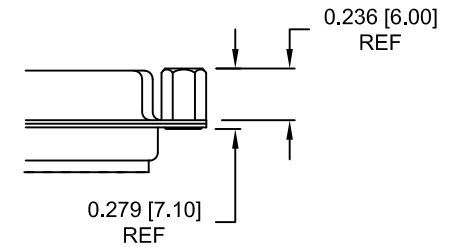
01X ..... 0.098" BOARD SIDE



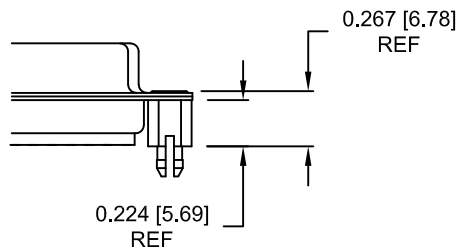
02X ..... 0.236" BOARD SIDE



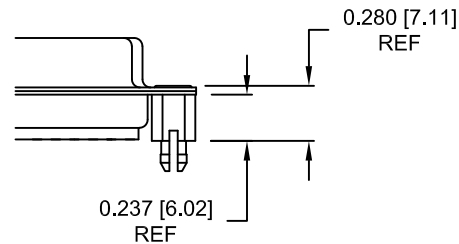
03X..... 0.236" MATING SIDE



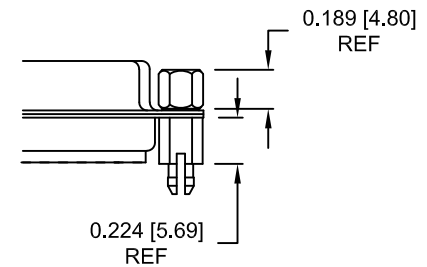
05X ..... 0.224" BOARD SIDE



S5X ..... 0.237" BOARD SIDE



91X ..... 0.224" BOARD SIDE  
0.189" MATING SIDE



NOTE: 4-40 FEMALE SCREW LOCK IS REMOVABLE

UNITS = INCHES [mm]

DO NOT SCALE FROM DRAWING



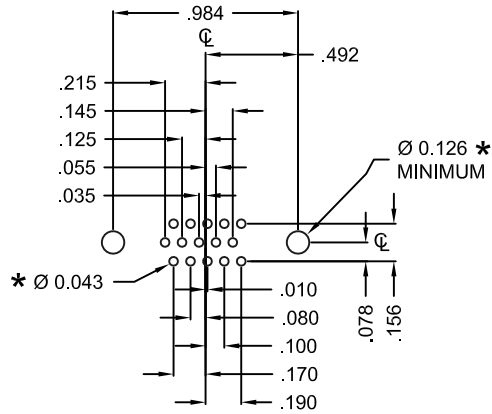
THESE DRAWINGS AND SPECIFICATIONS ARE THE PROPERTY OF NorComp AND SHALL NOT BE REPRODUCED, COPIED OR USED AS THE BASIS FOR THE MANUFACTURE OF SALE OF APPARATUS WITHOUT WRITTEN PERMISSION.

DRAWN: C. SMITH		DATE: 03-16-07	
SCALE: NTS	SHEET 2	OF 3	REV 20
DWG NO. 180-MYY-11YRYYY			

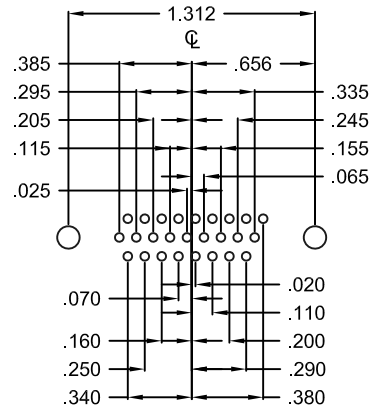
RoHS COMPLIANT

NorComp

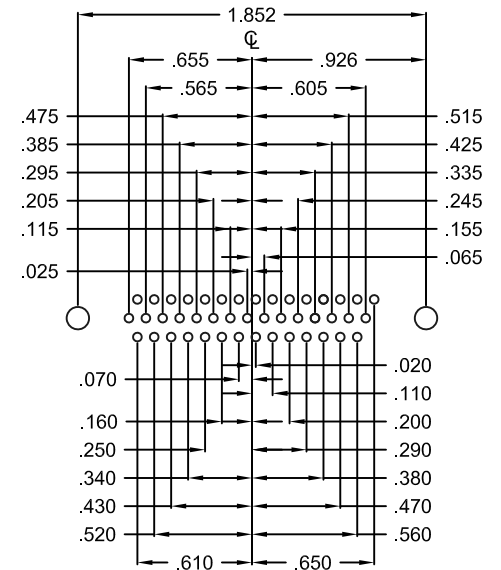
DESCRIPTION: LAYOUT - HIGH DENSITY - MACHINED CONTACTS - VERTICAL



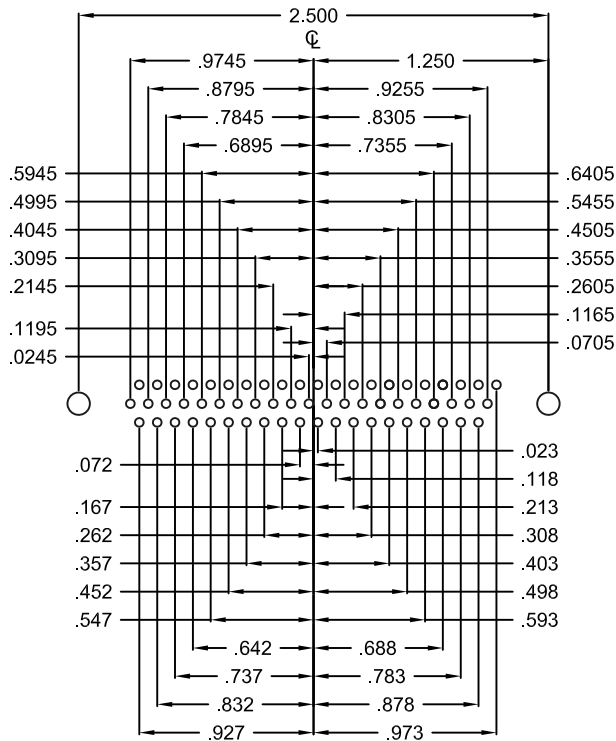
15 POSITION



26 POSITION



44 POSITION



62 POSITION

HOLE PATTERN SHOWN ARE FOR MALE

UNITS = inch

\* TYP. SUGGESTED SIZE MAY NOT BE SUITABLE FOR ALL APPLICATIONS

DO NOT SCALE FROM DRAWING

	THESE DRAWINGS AND SPECIFICATIONS ARE THE PROPERTY OF NorComp AND SHALL NOT BE REPRODUCED, COPIED OR USED AS THE BASIS FOR THE MANUFACTURE OF SALE OF APPARATUS WITHOUT WRITTEN PERMISSION.		DRAWN: <b>C. SMITH</b>	DATE: <b>03-16-07</b>
	<h1>NorComp</h1>		SCALE: NTS	SHEET OF 3 3
DWG NO. <b>180-MYY-11YRYYY</b>				

# Mouser Electronics

Authorized Distributor

Click to View Pricing, Inventory, Delivery & Lifecycle Information:

## NorComp:

[180-M62-113R911](#) [180-M15-113R011](#) [180-M26-113R011](#) [180-M26-113R021](#) [180-M44-113R021](#) [180-M44-113R011](#) [180-M15-113R001](#) [180-M26-113R001](#) [180-M15-113R911](#) [180-M15-113R031](#) [180-M26-113R911](#) [180-M62-113R021](#) [180-M62-113R011](#) [180-M62-113R031](#) [180-M15-113R021](#) [180-M26-113R031](#) [180-M44-113R911](#) [180-M44-113R031](#) [180-M62-113R001](#) [180-M44-113R001](#) [180-M26-113R051](#) [180-M62-113R051](#) [180-M15-113R051](#) [180-M44-113R051](#)