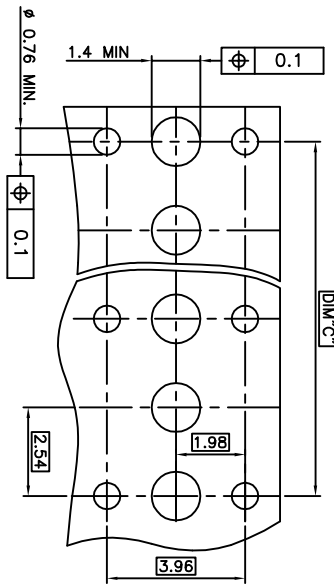


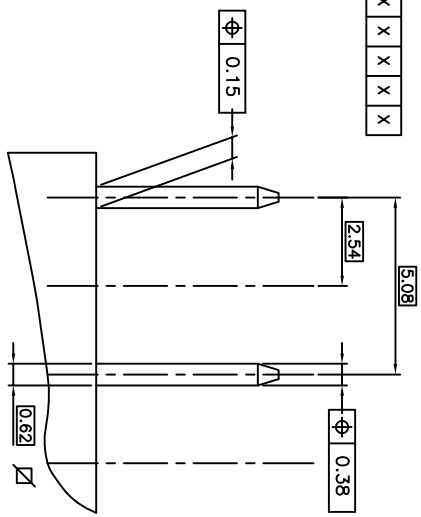
RECOMMENDED HOLES PATTERN
 RECOMMENDED PC BOARD THICKNESS: 1.6 mm



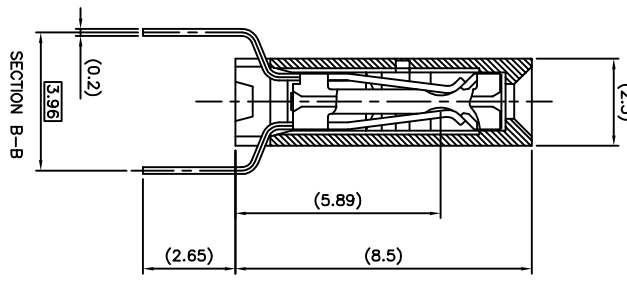
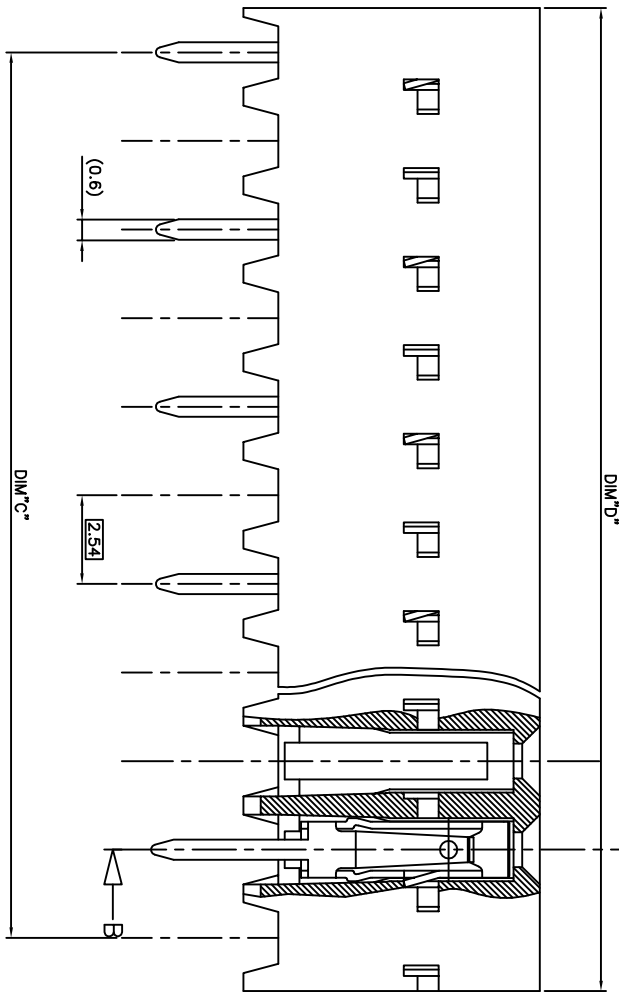
PRODUCT N°	HOUSING	DIM"C"	DIM"D"	NB. OF TER.	1	2	3	4	5	6	7	8	9	10	11	12	13	14	15	16	17	18	19	20	21	22	23	24	25	26	27	28
95234-Y01LF	1 X 28 pos.	68.58	71.04	14	X	X	X	X	X	X	X	X	X	X	X	X	X	X	X	X	X	X	X	X	X	X	X	X	X	X	X	X
95234-Y02LF	1 X 13 pos.	30.48	32.94	10	X	X	X	X	X	X	X	X	X	X	X	X	X	X	X	X	X	X	X	X	X	X	X	X	X	X	X	X
95234-Y03LF	1 X 3 pos.	5.08	7.54	2	X	X	X	X	X	X	X	X	X	X	X	X	X	X	X	X	X	X	X	X	X	X	X	X	X	X	X	X
95234-Y04LF	1 X 7 pos.	15.24	17.70	4	X	X	X	X	X	X	X	X	X	X	X	X	X	X	X	X	X	X	X	X	X	X	X	X	X	X	X	X
95234-Y05LF	1 X 4 pos.	7.62	10.08	2	X	X	X	X	X	X	X	X	X	X	X	X	X	X	X	X	X	X	X	X	X	X	X	X	X	X	X	X
95234-Y06LF	1 X 14 pos.	33.02	35.48	10	X	X	X	X	X	X	X	X	X	X	X	X	X	X	X	X	X	X	X	X	X	X	X	X	X	X	X	X

ROHS COMPATIBLE,
 SEE NOTE 4

CONTACT PLACED IN CAVITY (TABLE ACCORDING VIEW A)



RECOMMENDED PINS PATTERN



95234-4XXLF	5 µm Sn	Sn
95234-3XXLF	0.76 µm GOLD	Sn
PLATING CODE	CONTACT AREA	SOLDER TAIL
	PLATING THICKNESS OVER 1.27µm NI	

- NOTES:
- 1 - MATERIAL HOUSING: THERMOPLASTIC POLYESTER 70% GULON FULFID, OTHER BUTYL FLAME RETARDANT PER UL-94 CATEGORY V0.
 - 2 - MATERIAL TERMINAL: PHOSPHOR BRONZE EXTRA HARD.
 - 3 - CONNECTOR TO BE USED ON PC BOARD WITH NON PLATED THROUGH HOLES
 - 4 - ROHS COMPATIBLE PRODUCT SPECIFICATIONS
- a - PLATING:
 - "LF" MEANS THE PRODUCT IS LEAD-FREE, 2µm MINIMUM MATTE TIN OVER 1.27µm MINIMUM NICKEL UNDERPLATE.
- b - MANUFACTURING PROCESS COMPATIBILITY
 - THE HOUSING WILL WITHSTAND EXPOSURE TO 260°C ±5°C SOLDER BATH TEMPERATURE FOR 5 SECONDS IN A WAVE SOLDER APPLICATION WITH A 1.6mm MIN THICK CIRCUIT BOARD.
- c - LABELING:
 - MEETS PACKAGING SPECS AS PER GS-14-920
- d - LEGAL STATEMENT: SEE GS-47-0004

part. code	surface	tolerance	projection	product family
SEE NOTES	ISO 1992	ISO 406 ISO 30.3	10 ^{-0.1}	DX VCC SR
lit. edn no or date	reference unless otherwise specified	lineart	scale 10:1	title
H F07-027(LMU) 071206				DUAL ENTRY S.L
J B-16001(LMU) 131004				OFF SET LEGS
K B-16504(LMU) 140908				
L B-19123(LMU) 141021				
engr P.NZZI 951117	engr DLEGRAND 951117			day no
F T04-034(DLE) 041115	engr DLEGRAND 951117			95234
g F06-020(DLE) 060628	engr P.NZZI 951117			sheet 1 of 1 size
index revision				A2
sheet				CUSTOMER Drawing

Mouser Electronics

Authorized Distributor

Click to View Pricing, Inventory, Delivery & Lifecycle Information:

[FCI / Amphenol:](#)

[95234-302LF](#) [95234-301LF](#) [95234-303LF](#) [95234-304LF](#) [95234-305LF](#) [95234-306LF](#)