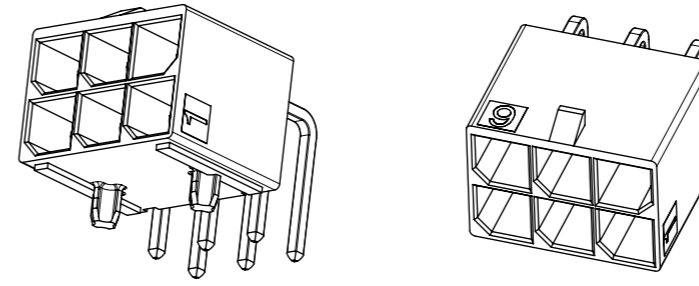
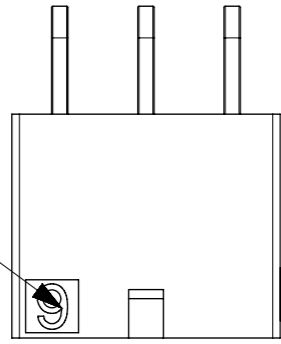
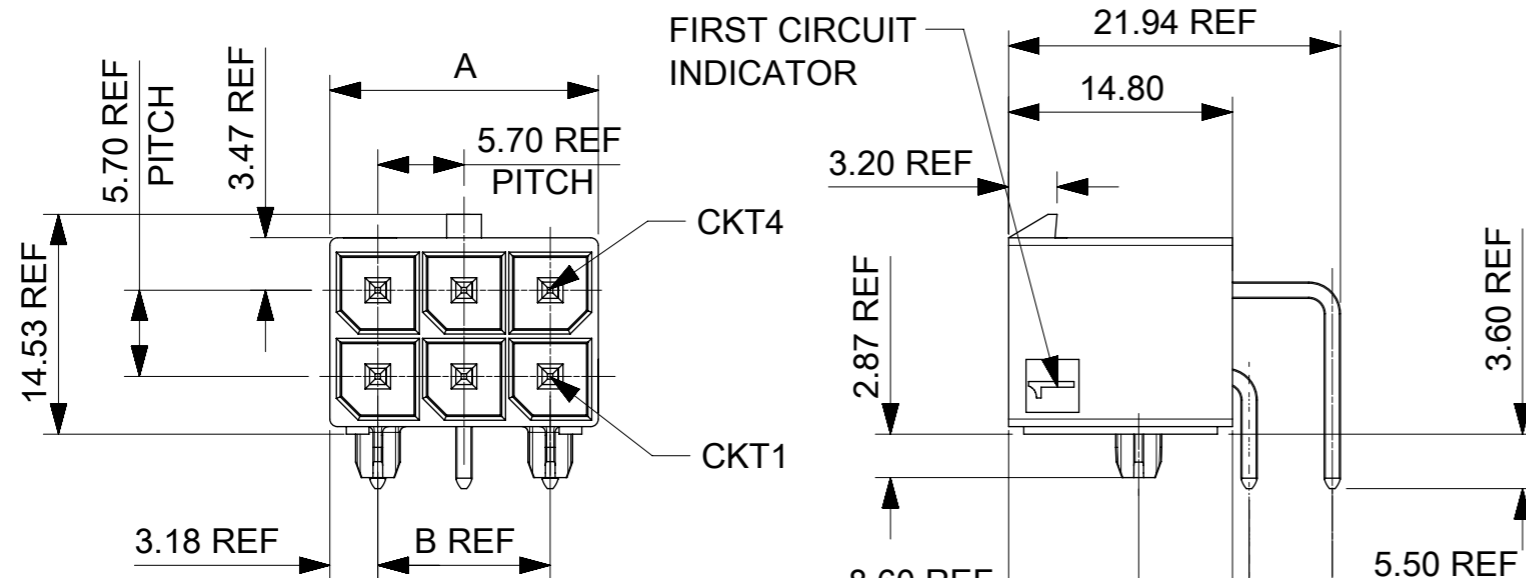


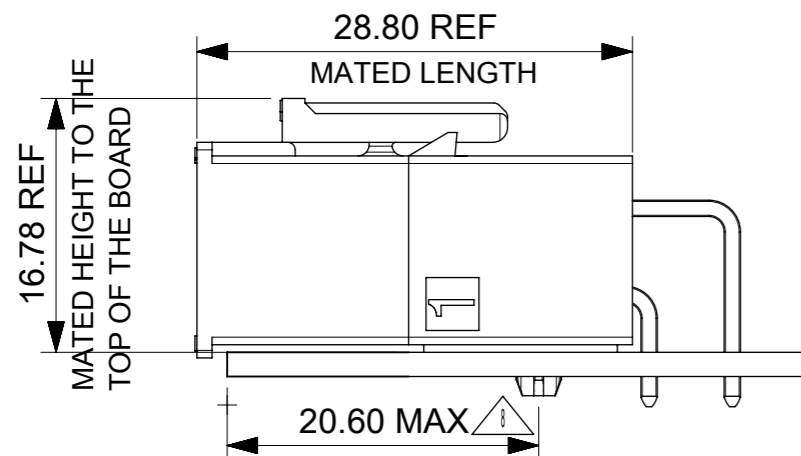
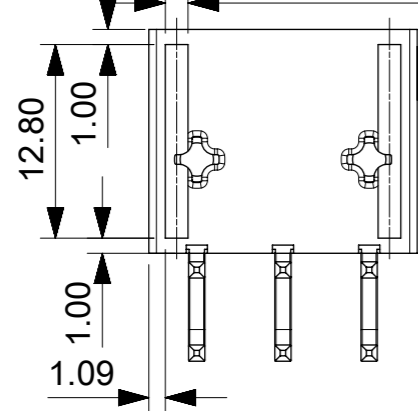
LAST CIRCUIT INDICATOR



76825-0006 SHOWN



1.50 OR 1.00 ONLY USED IN 2 CKT

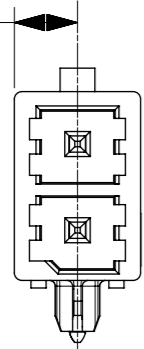


NOTES:

- MATERIAL:
HOUSING LCP, UL94V-0, GLOW WIRE CAPABLE PER IEC-60335-1 5TH EDITION, COLOR: BLACK.
TERMINAL: HIGH CONDUCTIVITY COPPER.
- TERMINAL PLATING:
(TIN) 1.52 MICROMETER MIN (60 MICROINCH MIN) REFLOWED MATTE TIN OVER
1.27 MICROMETER MIN (50 MICROINCH MIN) MIN NICKEL OVERALL.
(15 GOLD) 0.38 MICROMETER MIN (15 MICROINCH MIN) SELECTIVE GOLD ON CONTACT AREA
WITH 2.54 MICROMETER MIN (100 MICROINCHES MIN) SELECTIVE TIN ON SOLDER AREA
BOTH OVER 1.27 MICROMETER MIN (50 MICROINCHES MIN) NICKEL OVERALL.
(30 GOLD) 0.76 MICROMETER MIN (30 MICROINCH MIN) SELECTIVE GOLD ON CONTACT AREA
WITH 2.54 MICROMETER MIN (100 MICROINCHES MIN) SELECTIVE TIN ON SOLDER AREA
BOTH OVER 1.27 MICROMETER MIN (50 MICROINCHES MIN) NICKEL OVERALL.
- PRODUCT SPECIFICATION PS-76823-100.
- PACKAGING: TRAY PACKED PER MOLEX SPECIFICATION PK-76825-0000, WHILE T&R IS 1720640900.
- PART MATES WITH MOLEX PART NUMBER 170001 AND 171692 SERIES.
- APPLICATION SPECIFICATION: AS-76823-100
- PARTS CONFORM TO CLASS "B" REQUIREMENTS OF COSMETIC SPECIFICATION PS-45499-002.
- TO AVOID INTERFERENCE BETWEEN RECEPTACLE AND PCB, HEADER MUST BE PLACED WITHIN 20.6 MAX FROM EDGE OF PCB AS SHOWN FOR 4 THROUGH 12 CIRCUITS.
FOR 2 CIRCUIT PARTS THIS DIMENSION IS 15.1 MAX.

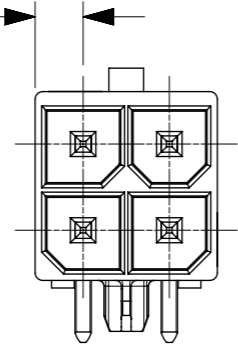
SYMBOLS	THIS DRAWING CONTAINS INFORMATION THAT IS PROPRIETARY TO MOLEX ELECTRONIC TECHNOLOGIES, LLC AND SHOULD NOT BE USED WITHOUT WRITTEN PERMISSION		CURRENT REV DESC:		molex		
DIMENSION UNITS	SCALE						
▽ = 0	mm						
▽ = 0	GENERAL TOLERANCES (UNLESS SPECIFIED)						
▽ = 0	ANGULAR TOL ± 0.5°						
▽ = 0	4 PLACES ±	EC NO: 628879	2019/12/02				
▽ = 0	3 PLACES ±	DRWN: HPAN18	2019/12/11				
▽ = 0	2 PLACES ± 0.25	CHK'D: YXZHENG	2019/12/11				
▽ = 0	1 PLACE ±	APPR: YXZHENG	2019/12/11				
▽ = 0	0 PLACES ±	INITIAL REVISION:					
▽ = 0	DRAFT WHERE APPLICABLE MUST REMAIN WITHIN DIMENSIONS	DRWN: JDFOX	2015/04/17				
▽ = 0	THIRD ANGLE PROJECTION	APPR: FSMITH	2015/04/17				
		DRAWING	SERIES	MATERIAL NUMBER	CUSTOMER	DOCUMENT NUMBER	DOC TYPE DOC PART REVISION
		A3-SIZE	76825	SD-76825-0100	GENERAL MARKET	PSD	000 D11
							SHEET NUMBER
							1 OF 3

4.18 REF



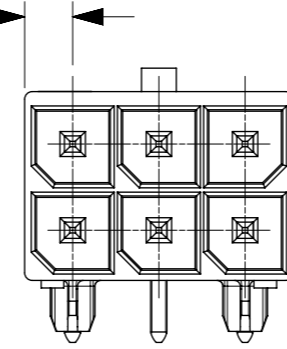
2CKT

3.18 REF

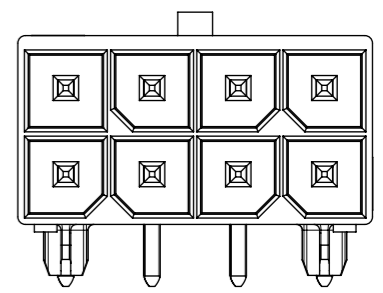


4CKT

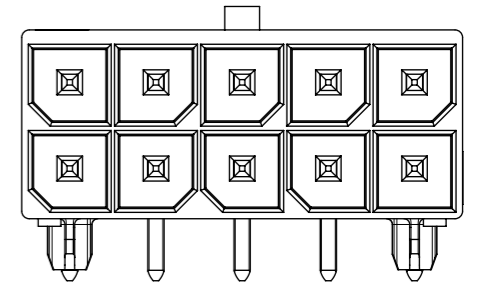
3.18 REF



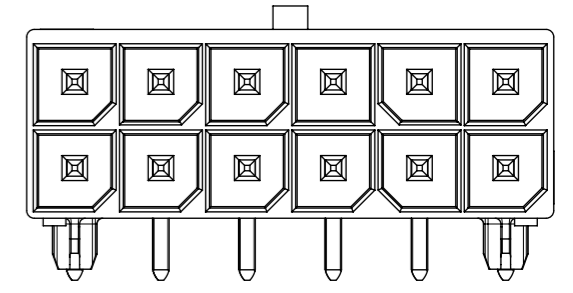
6CKT



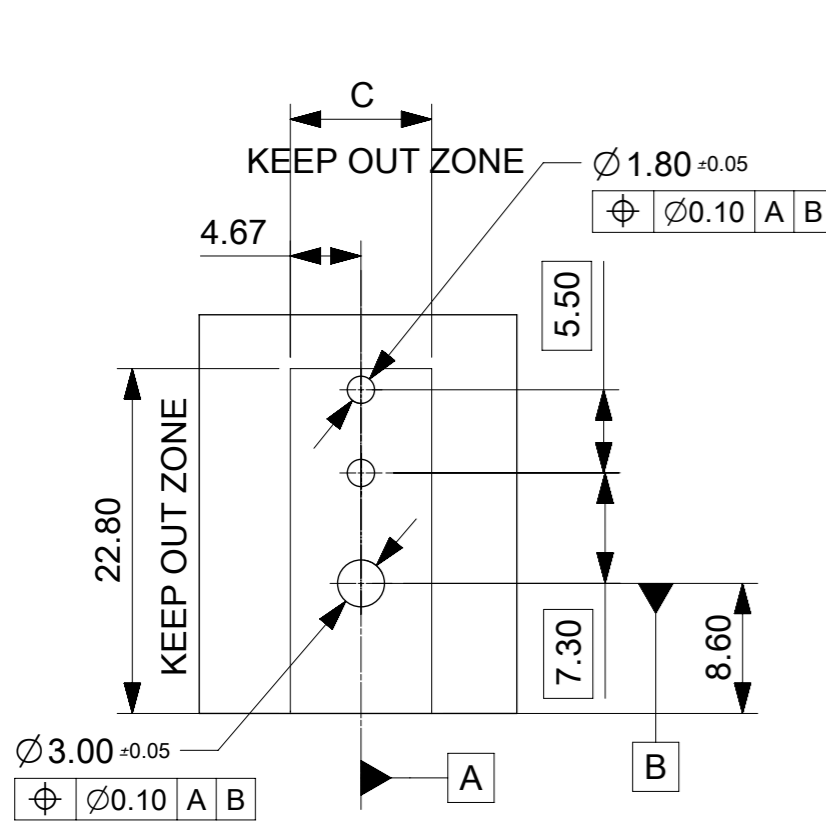
8CKT



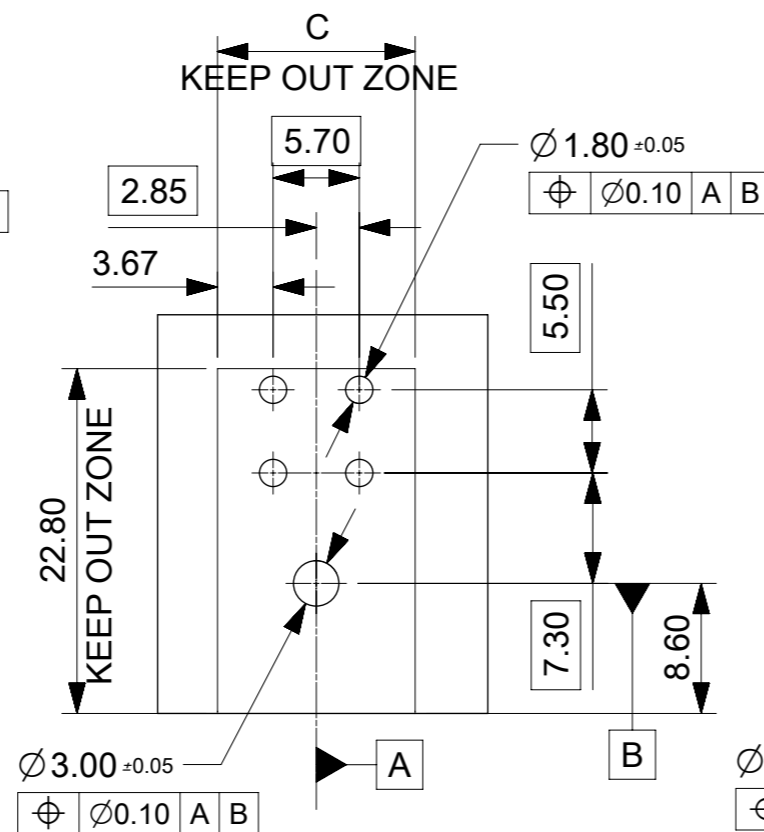
10CKT



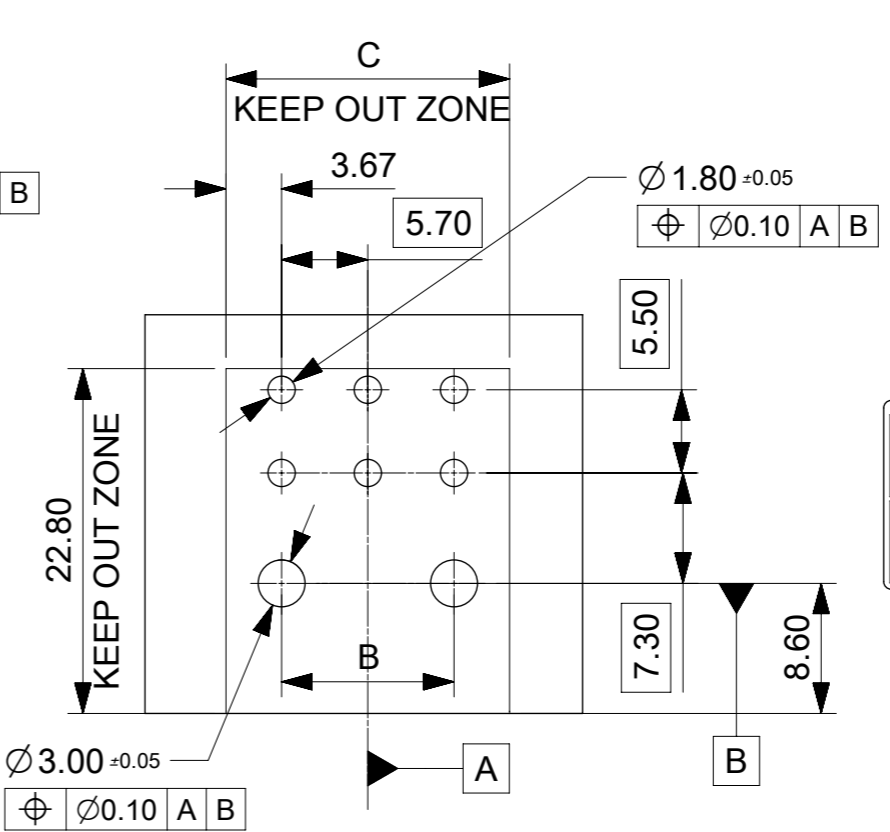
12CKT



PCB LAYOUT: COMPONENT SIDE
RECOMENDED PCB THICKNESS: 1.58 MM/.062 IN
TO 2.36 MM/.093 IN



PCB LAYOUT: COMPONENT SIDE
RECOMENDED PCB THICKNESS: 1.58 MM/.062 IN
TO 2.36 MM/.093 IN


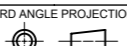


PCB LAYOUT: COMPONENT SIDE
RECOMENDED PCB THICKNESS: 1.58 MM/.062 IN
TO 2.36 MM/.093 IN

SYMBOLS = 0 = 0 = 0 = 0 = 0 = 0 = 0 = 0 = 0 = 0	THIS DRAWING CONTAINS INFORMATION THAT IS PROPRIETARY TO MOLEX ELECTRONIC TECHNOLOGIES, LLC AND SHOULD NOT BE USED WITHOUT WRITTEN PERMISSION		CURRENT REV DESC:		 MEGA-FIT RIGHT ANGLE HEADER R/A HEADER ASSY 2-12 CKT PRODUCT CUSTOMER DRAWING		
	DIMENSION UNITS	SCALE	EC NO: 628879				
	mm		DRWN: HPAN18 2019/12/02				
	GENERAL TOLERANCES (UNLESS SPECIFIED)		CHK'D: YXZHENG 2019/12/11				
	ANGULAR TOL ± 0.5°		APPR: YXZHENG 2019/12/11				
4 PLACES ±		INITIAL REVISION:		DOCUMENT NUMBER	DOC TYPE	DOC PART	REVISION
3 PLACES ±		DRWN: JDFOX 2015/04/17		SD-76825-0100		PSD	000 D11
2 PLACES ± 0.25		APPR: FSMITH 2015/04/17		MATERIAL NUMBER		CUSTOMER	
1 PLACE ±		THIRD ANGLE PROJECTION		76825		GENERAL MARKET	
0 PLACES ±		DRAWING		A3-SIZE		SHEET NUMBER	
DRAFT WHERE APPLICABLE MUST REMAIN WITHIN DIMENSIONS		SERIES		76825		2 OF 3	

	CKT SIZE		PART NO.	PLATING	DIM A	DIM B	DIM C	PK SPEC
	2	X	76825-0002	TIN	8.35	N/A	9.35	TRAY
	4	X	76825-0004	TIN	12.05	N/A	13.05	
	6	X	76825-0006	TIN	17.75	11.4	18.75	
	8	X	76825-0008	TIN	23.45	17.1	24.45	
	10	X	76825-0010	TIN	29.15	22.8	30.15	
	12	X	76825-0012	TIN	34.85	28.5	35.45	
	2		172064-0002	15 GOLD	8.35	N/A	9.35	
	4		172064-0004	15 GOLD	12.05	N/A	13.05	
	6		172064-0006	15 GOLD	17.75	11.4	18.75	
	8		172064-0008	15 GOLD	23.45	17.1	24.45	
	10		172064-0010	15 GOLD	29.15	22.8	30.15	
	12		172064-0012	15 GOLD	34.85	28.5	35.45	
	2		172064-1002	30 GOLD	8.35	N/A	9.35	
	4		172064-1004	30 GOLD	12.05	N/A	13.05	
	6		172064-1006	30 GOLD	17.75	11.4	18.75	
	8		172064-1008	30 GOLD	23.45	17.1	24.45	
	10		172064-1010	30 GOLD	29.15	22.8	30.15	
	12		172064-1012	30 GOLD	34.85	28.5	35.45	
*	2	X	76825-0902	TIN	8.35	N/A	9.35	TAPE&REEL
*	4	X	76825-0904	TIN	12.05	N/A	13.05	
*	6	X	76825-0906	TIN	17.75	11.4	18.75	
*	8	X	76825-0908	TIN	23.45	17.1	24.45	
*	10	X	76825-0910	TIN	29.15	22.8	30.15	
*	12	X	76825-0912	TIN	34.85	28.5	35.45	
*	2		172064-0902	15 GOLD	8.35	N/A	9.35	
*	4		172064-0904	15 GOLD	12.05	N/A	13.05	
*	6		172064-0906	15 GOLD	17.75	11.4	18.75	
*	8		172064-0908	15 GOLD	23.45	17.1	24.45	
*	10		172064-0910	15 GOLD	29.15	22.8	30.15	
*	12		172064-0912	15 GOLD	34.85	28.5	35.45	
*	2		172064-1902	30 GOLD	8.35	N/A	9.35	
*	4		172064-1904	30 GOLD	12.05	N/A	13.05	
*	6		172064-1906	30 GOLD	17.75	11.4	18.75	
*	8		172064-1908	30 GOLD	23.45	17.1	24.45	
*	10		172064-1910	30 GOLD	29.15	22.8	30.15	
*	12		172064-1912	30 GOLD	34.85	28.5	35.45	

* DESIGNATES PART NOT RELEASED
CONTACT FACTORY FOR AVAILABILITY.

THIS DRAWING CONTAINS INFORMATION THAT IS PROPRIETARY TO MOLEX ELECTRONIC TECHNOLOGIES, LLC AND SHOULD NOT BE USED WITHOUT WRITTEN PERMISSION											
SYMBOLS		DIMENSION UNITS		SCALE		CURRENT REV DESC:				 MEGA-FIT RIGHT ANGLE HEADER R/A HEADER ASSY 2-12 CKT	
▽ = 0		mm				EC NO: 628879					
▽ = 0		GENERAL TOLERANCES (UNLESS SPECIFIED)				DRWN: HPAN18 2019/12/02					
▽ = 0		ANGULAR TOL ± 0.5°				CHK'D: YXZHENG 2019/12/11				PRODUCT CUSTOMER DRAWING	
▽ = 0		4 PLACES ±				APPR: YXZHENG 2019/12/11				DOCUMENT NUMBER	
▽ = 0		3 PLACES ±				INITIAL REVISION:				DOC TYPE DOC PART REVISION	
▽ = 0		2 PLACES ± 0.25				DRWN: JDFOX 2015/04/17				SD-76825-0100 PSD 000 D11	
▽ = 0		1 PLACE ±				APPR: FSMITH 2015/04/17				MATERIAL NUMBER	
▽ = 0		0 PLACES ±				THIRD ANGLE PROJECTION		DRAWING		SERIES	
▽ = 0		DRAFT WHERE APPLICABLE MUST REMAIN WITHIN DIMENSIONS						A3-SIZE		76825	
▽ = 0						CUSTOMER		GENERAL MARKET		SHEET NUMBER	
										3 OF 3	