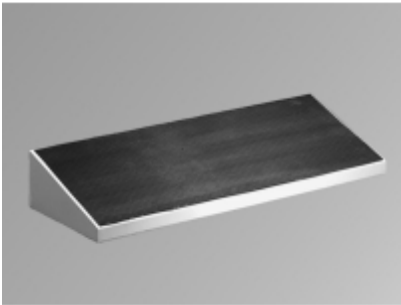


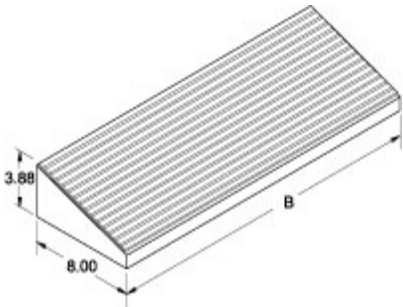


Quality Products. Service Excellence.

Footrest S2CF Series



- Generally used in combination with plinth.
- Provides a raised foot support to relieve back stress.
- Gives the installation a "finished" appearance.
- Available in 24", 36", 48" and 60" widths.
- Maintains NEMA rating of system.
- Formed 14 gauge steel.
- Also offered with formed 14 gauge stainless steel.
- Rubber tread for added traction on footrest surface.
- Available in light gray and natural stainless steel.



| RAL 7035 Light Gray Part No. | Stainless Steel Part No. | B |
|------------------------------------|--------------------------------|-------|
| 2CLF24 | 2CSF24 | 24.00 |
| 2CLF36 | 2CSF36 | 36.00 |
| 2CLF48 | 2CSF48 | 48.00 |
| 2CLF60 | 2CSF60 | 60.00 |

Data subject to change without notice

© 2020. Hammond Manufacturing Ltd. All rights reserved.

Mouser Electronics

Authorized Distributor

Click to View Pricing, Inventory, Delivery & Lifecycle Information:

[Hammond:](#)

[2CLF24](#) [2CSF36](#) [2CSF24](#) [2CSF48](#) [2CSF60](#)