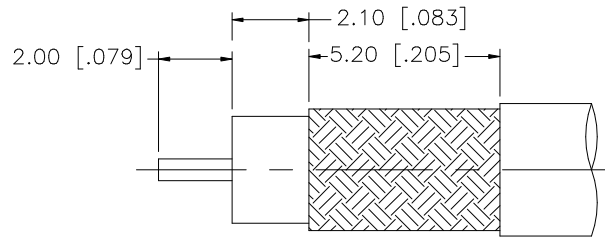
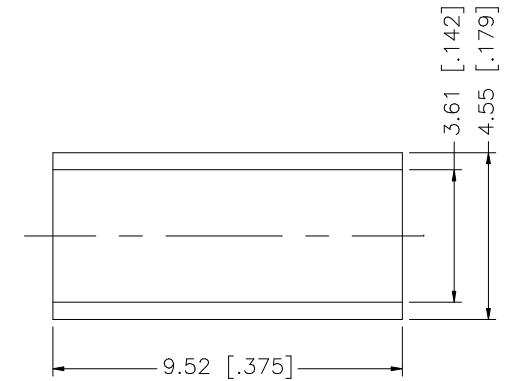
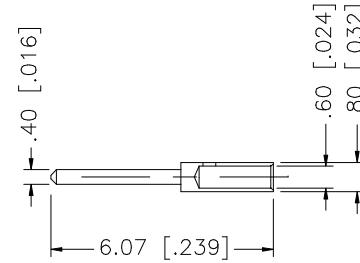
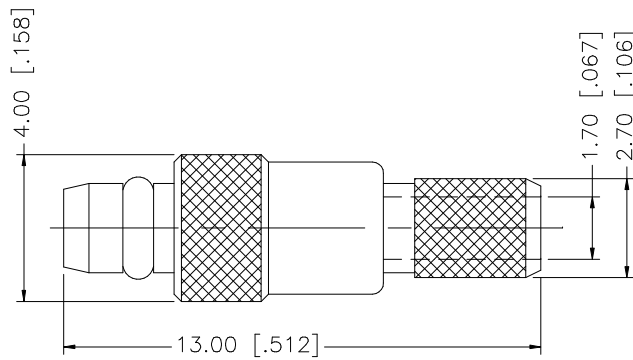


REV.	DATE	DESCRIPTION
A	06/05/03	UPDATE FERRULE DIMENSIONS



RECOMMENDED CABLE STRIPPING DIM'S.



NOTE:

1. CRIMPED FERRULE  
HEX CRIMP SIZE .151"
2. CONTACT PIN TO SOLDER.

8					<small>UNLESS OTHERWISE SPECIFIED DIMENSIONS ARE IN MILLIMETERS. DIMENSIONS IN [ ] ARE IN INCHES AND FOR CUSTOMER REFERENCE ONLY.</small>  <small>UNLESS OTHERWISE SPECIFIED TOLERANCES FOR MILLIMETERS ARE: 0.5 - 8mm ± 0.20mm 8 - 30mm ± 0.40mm 30 - 120mm ± 0.50mm</small>  <small>UNLESS OTHERWISE SPECIFIED TOLERANCES FOR INCHES ARE: .020 - .315 = ± 0.007" .315 - 1.180 = ± 0.015" 1.180 - 4.724 = ± 0.020"</small>	APPROVALS	DATE	<h1 style="color: blue;">Amphenol Connex</h1>							
7				DRAWN		G.R.S.	06/05/03								
6				CHECKED				<b>PART DESCRIPTION</b>  <b>MMCX CRIMP PLUG</b> <b>(FOR 316/U DOUBLE BRAID CABLE)</b>							
5	FERRULE	COPPER	GOLD	1		ISSUED									
4	RETAINER RING	BER. COPPER	GOLD	1		SHEET	1 OF 1		<b>PART NO.</b>  <b>262110</b>						
3	CONTACT PIN	BRASS	GOLD	1											
2	INSULATOR	TEFLON	NATURAL	1		CAD FILE	C:/262/262110.DWG	DWG. NO.	262110.DWG	REV.	A	SIZE	A	SCALE	NA
1	BODY	BRASS	GOLD	1											
	DESCRIPTION	MATERIAL	FINISH	QTY	DO NOT SCALE DRAWING										

# Mouser Electronics

Authorized Distributor

Click to View Pricing, Inventory, Delivery & Lifecycle Information:

[Amphenol:](#)

[262110](#)