

NOTES:

## I. MATERIALS AND FINISHES:

HOUSING	-	BRASS, GOLD PLATING
FERRULE	-	COPPER, GOLD PLATING
BODY	-	BERYLLIUM COPPER, GOLD PLATING
CONTACT	-	BRASS, GOLD PLATING
INSULATOR	-	PTFE, NATURAL

## 2. ELECTRICAL:

A. IMPEDANCE: 50 OHM, NOMINAL  
B. FREQUENCY RANGE: 0-6 GHz  
C. VSWR (RETURN LOSS): 1.060 (-30.7 dB) MAX. @ 0-2.5 GHz  
D. D.W.V: 1000 VRMS, MIN.

### 3. MECHANICAL:

A. DURABILITY: 500 CYCLES MIN.  
B. TEMPERATURE RANGE: -55°C TO +155°C

4. CRIMPED FERRULE HEX CRIMP SIZE .128"

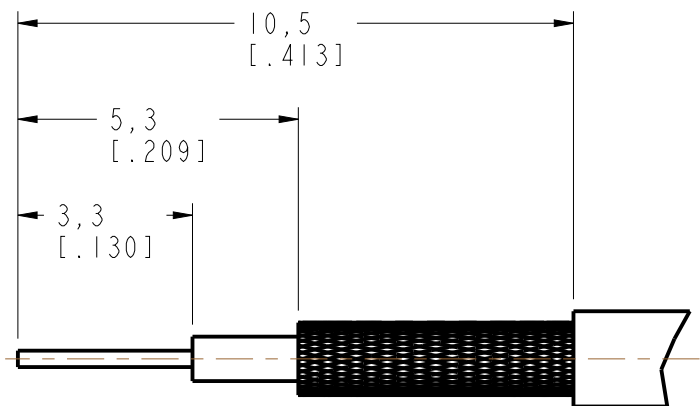
## 5. CONTACT PIN TO SOLDER

6. SHOWS CABLE ENTRY DIMENSIONS.

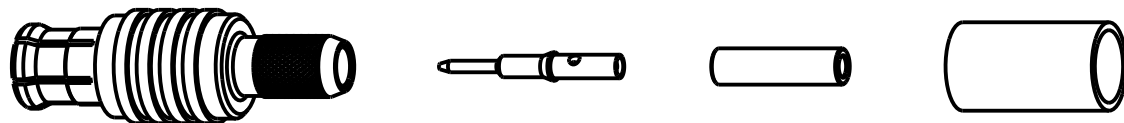
THIRD ANGLE PROJ. 

REVISIONS

REV	DESCRIPTION	DATE	ECO	APPR
A	RELEASE TO MFG.	04-Sep-06	-----	GEFFERY
B	A) 15.2, 5, 8.6 WERE: 14.7, 4.5, 8.10 B) ADDED SPACER, C) ADDED NOTES	19-Sep-14	2794	MZ/BCG

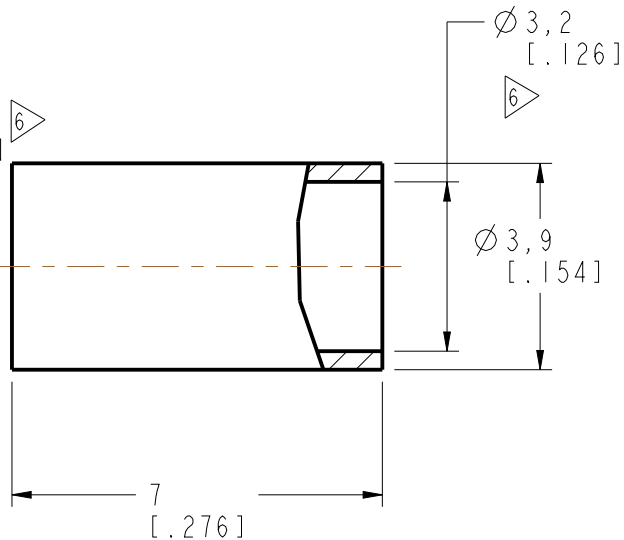
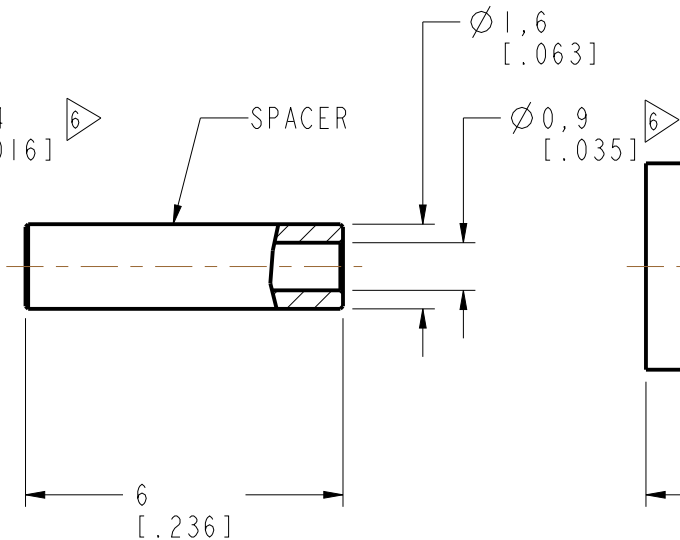
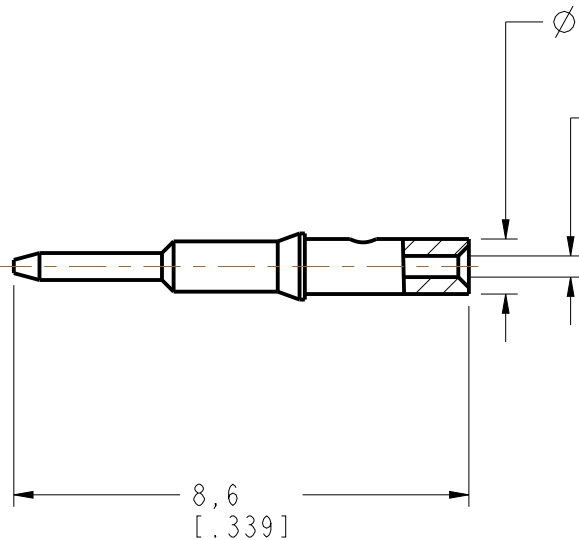
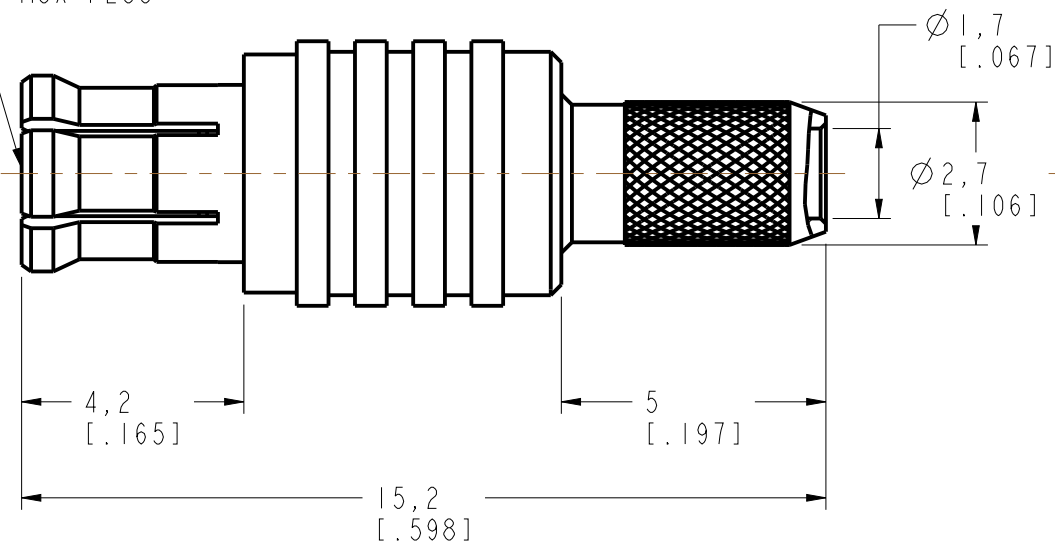


RECOMMENDED  
CABLE STRIPPING DIM'S



SCALE 3.000

-INTERFACE PER  
CECC 22220  
MCX PLUG



## CUSTOMER OUTLINE DRAWING

**ALL OTHER SHEETS ARE FOR INTERNAL USE ONLY**

UNLESS OTHERWISE SPECIFIED, DIMENSIONS ARE IN METRIC AND TOLERANCES ARE: <0.5mm    0.5 - 6mm    6 - 30mm    30 - 120mm    ANGLES ± 0.05mm    ±0.1mm    ±0.2mm    ± 0.3mm    ±1° NOTICE - These drawings, specifications, or other data (1) are, and remain the property of Amphenol corp. (2) must be returned upon request; and (3) are confidential and not to be disclosed to any person other than those to whom they are given by Amphenol Corp. the furnishing of these drawings, specifications, or other data by Amphenol Corp., or to any other person to anyone for any purpose is not to be regarded by implication or otherwise in any manner licensing, granting rights to permitting such holder or any other person to manufacture, use or sell any product, process or design, patented or otherwise, that may in any way be related to or disclosed by said drawings, specifications, or other data.	MATERIAL -	DRAWN M. ZHANG	DATE 19-Sep-14	TITLE MCX CRIMP PLUG (FOR RG-178B/U, 196A/U CABLE)	Amphenol Connex	
		ENGINEER S. DUAN	DATE 19-Sep-14			
	REFERENCE MCX1121A1-009-3GT30G-50 CONFIGURATION LEVEL: In Work	APPROVED S. HSIEH	DATE 19-Sep-14	SCALE: 7.0:1.0	SHEET	3 OF 3
	FINISH	CAD FILE		DWG SIZE B	REV B	DRAWING NO. ITEM NO. PART NO. 252127

# Mouser Electronics

Authorized Distributor

Click to View Pricing, Inventory, Delivery & Lifecycle Information:

[Amphenol:](#)

[252127](#)