

MICRO SWITCH

FREEPORT ILLINOIS, U.S.A
A DIVISION OF HONEYWELL
FED. MFG. CODE 91929

SWITCH-BASIC

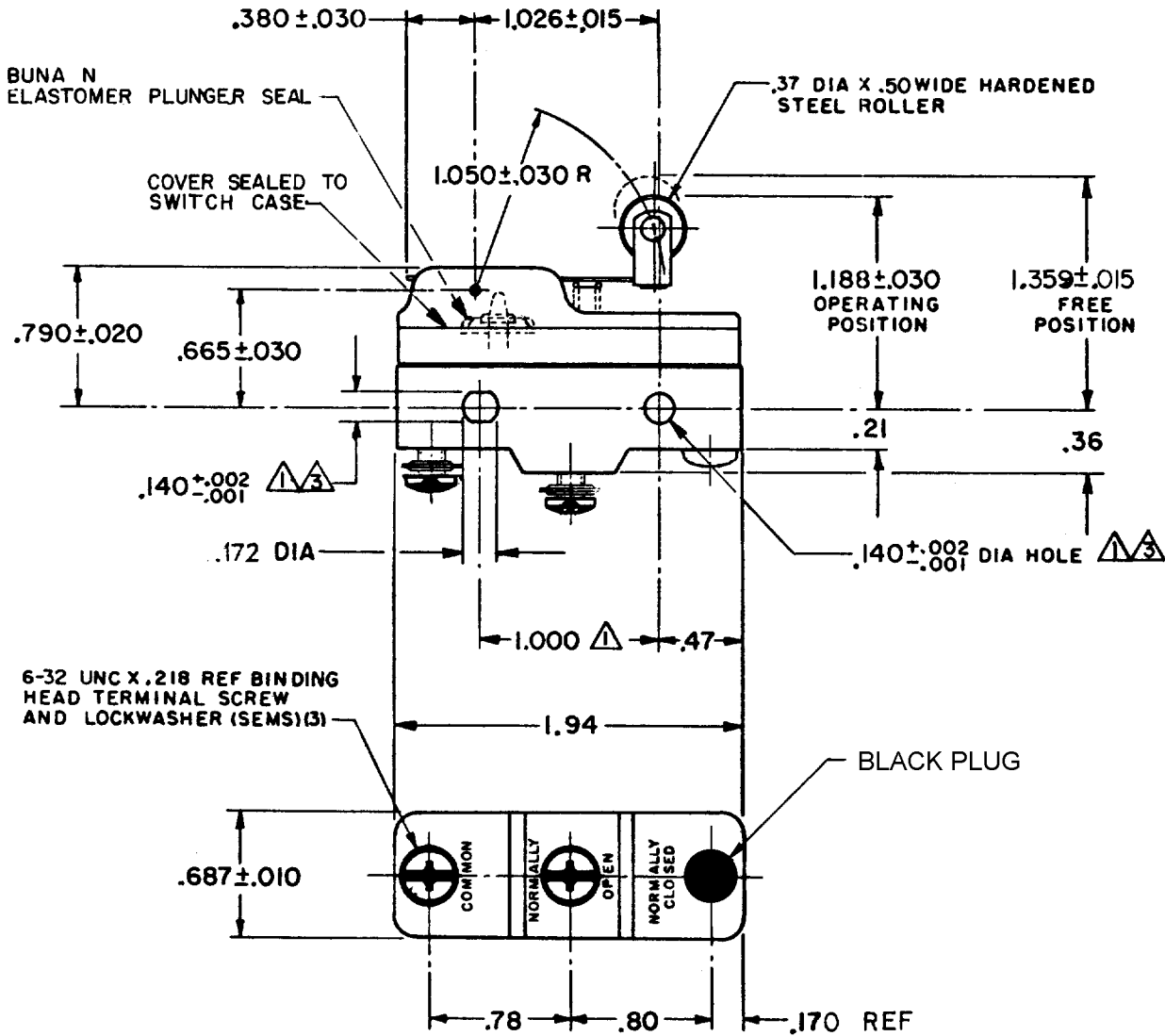
CATALOG LISTING

YZ-7RW8221555516T

CATALOG LISTING
YZ-7RW8221555516T
PAGE 1 OF 1
RELEASE NO. PR-10650-T REPLACES X71643-YZ

M
DRAWING NUMBER
6
ISSUE

REVISIONS	
A	CO67209 JAP 2 MAY 90
B	CO- 69351-D JWB 18 JUL 91
C	CO- 77588 KDR 29 MAR 94
D	CO93346 DLT 17 AUG 98
E	0000763 CSL 2 JUL 03



- NOTES
- 1 MOUNTING HOLES WILL ACCEPT PINS OR SCREWS OF .139 MAX DIA ON 1.000 ± .002 CENTERS
 - 2 SEALED CONSTRUCTION PROVIDES SPLASH RESISTANCE
 - 3 SLIGHT COUNTERBORE PERMISSIBLE (EITHER SIDE)

THIS DRAWING COVERS A PROPRIETARY ITEM AND IS THE PROPERTY OF MICRO SWITCH, A DIVISION OF HONEYWELL. THIS DRAWING IS NOT TO BE COPIED OR USED WITHOUT THE APPROVAL OF MICRO SWITCH.

THIRD ANGLE PROJECTION

CHARACTERISTICS

OPERATING FORCE - - - - - 7 OZ MAX
 RELEASE FORCE - - - - - 1 1/2 MIN
 DIFFERENTIAL TRAVEL - - - .020 - .050
 OVERTRAVEL - - - - - .094 MIN

ELECTRICAL DATA

CONTACT ARRANGEMENT
S P N O

10A 125, 250 OR 480 VAC
 1/2 A 125 VDC, 1/4 A 250 VDC

L9
L288

SCALE FULL

DO NOT SCALE PRINT

TOLERANCES
 APPLY TO DESIGN UNITS. CONVERSIONS ARE ONLY FOR REFERENCE. UNLESS NOTED, TOLERANCES ARE 2

DIM.	TOL.	DIM.	TOL.
mm	mm/in	in	mm/in
NO PLACES	X	17.04	
ONE PLACE	X.X	0.47, 0.18	X.X
TWO PLACES	X.XX	0.18, 0.08	X.XX
THREE PLACES	X.XXX	0.38, 0.15	X.XXX
ANGLES			

SI METRIC
 DESIGN UNITS US CUSTOMARY

WEIGHT .079 LB

FO-52848-A
 DRAWN
 RASTER
 19 OCT 81 CHECK
 CEB 26 OCT 81 CHECK

Mouser Electronics

Authorized Distributor

Click to View Pricing, Inventory, Delivery & Lifecycle Information:

[Honeywell:](#)

[YZ-7RW822155516T](#)