

4

3

2

1

THIS DRAWING IS UNPUBLISHED.

RELEASED FOR PUBLICATION

SEP .2005.

ALL RIGHTS RESERVED.

LOC

DIST

REVISIONS

変更

P

LTR

DESCRIPTION

DATE

DWN

APVD

1 CONTACT COPLANALITY IS 0.1 MAX.

2 THIS DIMENSION MEANS CENTER OF THE POCKET.

3 M3 TAPPING + BVTP RECOMMENDED TORQUE: 68.6N (7Kgf) MAX.

4 FINISH

CONTACT: V μm MIN. Au PL. ON CONTACT AREA (V: SEE TABLE)

0.03~0.1 μm Au PL. ON TERMINAL AREA

Ni UNDER PL. ALL OVER

SHELL: Sn PL. (MATTE) ALL OVER

Ni UNDER PL. ALL OVER

5 SCREW SIZE

6 QTY PRINT ON THE LABEL. (EMBOSS PACKING)

1 コンタクトコプラナリティーは 0.1 以下。

2 本寸法はポケットの中心を表す。

3 M3 TAPPING + BVTP 推奨トルク: 68.6N (7Kgf) 以下。

4 仕上

コンタクト: コンタクトエリアに V μm 以上の 金めっき (V: 表参照)

ターミナルエリアに 0.03~0.1 μm の金めっき

ニッケル下地めっきを施す

シェル: すずめっき (つや消し)

ニッケル下地めっきを施す

5 スクリューサイズ

6 数量はラベルに印字される (EMBOSS 梱包)

0.3	—	6 70	1.9	—	—	—	—	33.5	37.5	9.32	0.4	32	28.4	14.2	16	WITHOUT TAPE	WITHOUT FLANGE	THROUGH HOLE	(SEE SHEET 2)	SOFT TRAY (SEE SHEET 11)	6-1903015-3
0.76	M3 x 0.5	70	1.9	46	138	6-23	46	—	—	—	—	—	—	—	—	WITH TAPE	WITH FLANGE	THROUGH HOLE	(SEE SHEET 3)	SOFT TRAY (SEE SHEET 7)	9-1903015-4
0.3	M3 x 0.5	6 200	1.9	—	—	—	—	45.5	49.5	18.3	0.5	44	40.4	20.2	20	WITH TAPE	WITH FLANGE	THROUGH HOLE	(SEE SHEET 3)	EMBOSS (SEE SHEET 6)	9-1903015-3
0.3	M3 x 0.5	70	1.9	—	—	—	—	—	—	—	—	—	—	—	—	WITHOUT TAPE	WITH FLANGE	THROUGH HOLE	(SEE SHEET 3)	SOFT TRAY (SEE SHEET 10)	8-1903015-4
0.1	—	6 550	1.9	—	—	—	—	33.5	37.5	9.32	0.4	32	28.4	14.2	16	WITHOUT TAPE	WITHOUT FLANGE	THROUGH HOLE	(SEE SHEET 2)	EMBOSS (SEE SHEET 6)	7-1903015-1
0.3	M3 x 0.5	6 200	1.9	—	—	—	—	45.5	49.5	18.3	0.5	44	40.4	20.2	20	WITHOUT TAPE	WITH FLANGE	FULL SMT	(SEE SHEET 5)	EMBOSS (SEE SHEET 6)	5-1903015-9
0.3	—	6 550	0.8	—	—	—	—	33.5	37.5	9.32	0.4	32	28.4	14.2	16	WITHOUT TAPE	WITHOUT FLANGE	THROUGH HOLE	(SEE SHEET 2)	EMBOSS (SEE SHEET 6)	5-1903015-5
0.3	M3 x 0.5	70	1.9	46	138	6-23	46	—	—	—	—	—	—	—	—	WITHOUT TAPE	WITH FLANGE	THROUGH HOLE	(SEE SHEET 3)	SOFT TRAY (SEE SHEET 7)	5-1903015-4
0.3	M3 x 0.5	6 200	1.9	—	—	—	—	45.5	49.5	18.3	0.5	44	40.4	20.2	20	WITHOUT TAPE	WITH FLANGE	THROUGH HOLE	(SEE SHEET 3)	EMBOSS (SEE SHEET 6)	5-1903015-3
-0.3	3 ø2.65±0.3	70	1.9	46	138	6-23	46	—	—	—	—	—	—	—	—	WITHOUT TAPE	WITH FLANGE	THROUGH HOLE	(SEE SHEET 3)	SOFT TRAY (SEE SHEET 7)	5-1903015-2
0.3	—	6 400	1.9	—	—	—	—	33.5	37.5	9.32	0.4	32	28.4	14.2	16	WITHOUT TAPE	WITHOUT FLANGE	THROUGH HOLE	(SEE SHEET 2)	EMBOSS (SEE SHEET 6)	5-1903015-1
0.3	M3 x 0.5	70	1.0	46	138	6-23	46	—	—	—	—	—	—	—	—	WITHOUT TAPE	WITH FLANGE	THROUGH HOLE	(SEE SHEET 3)	SOFT TRAY (SEE SHEET 7)	4-1903015-1
0.76	—	6 400	1.2	—	—	—	—	33.5	37.5	9.32	0.4	32	28.4	14.2	16	WITHOUT TAPE	WITHOUT FLANGE	THROUGH HOLE	(SEE SHEET 2)	EMBOSS (SEE SHEET 6)	2-1903015-2
0.76	M3 x 0.5	70	1.9	—	—	—	—	—	—	—	—	—	—	—	—	WITHOUT TAPE	WITH FLANGE	THROUGH HOLE	(SEE SHEET 3)	SOFT TRAY (SEE SHEET 9)	1903015-8
0.76	3 ø2.65±0.3	70	1.9	—	—	—	—	—	—	—	—	—	—	—	—	WITHOUT TAPE	WITH FLANGE	THROUGH HOLE	(SEE SHEET 3)	SOFT TRAY (SEE SHEET 9)	1903015-7
0.76	M3 x 0.5	50	1.9	54.4	120	4-30	54.4	—	—	—	—	—	—	—	—	WITHOUT TAPE	WITH FLANGE	THROUGH HOLE	(SEE SHEET 3)	SOFT TRAY (SEE SHEET 9)	1903015-5
0.76	M3 x 0.5	70	1.9	46	138	6-23	46	—	—	—	—	—	—	—	—	WITHOUT TAPE	WITH FLANGE	THROUGH HOLE	(SEE SHEET 4)	SOFT TRAY (SEE SHEET 8)	1903015-4
0.76	M3 x 0.5	6 200	1.9	—	—	—	—	45.5	49.5	18.3	0.5	44	40.4	20.2	20	WITHOUT TAPE	WITH FLANGE	THROUGH HOLE	(SEE SHEET 4)	EMBOSS (SEE SHEET 6)	1903015-3
0.76	3 ø2.65±0.3	70	1.9	46	138	6-23	46	—	—	—	—	—	—	—	—	WITHOUT TAPE	WITH FLANGE	THROUGH HOLE	(SEE SHEET 3)	SOFT TRAY (SEE SHEET 7)	1903015-2
0.76	—	6 400	1.9	—	—	—	—	33.5	37.5	9.32	0.4	32	28.4	14.2	16	WITHOUT TAPE	WITHOUT FLANGE	THROUGH HOLE	(SEE SHEET 2)	EMBOSS (SEE SHEET 6)	1903015-1
V	U	T	AA	S	R	P	N	M	L	K	J	H	G	F	E	POLYIMIDE TAPE	FLANGE	SHELL TYPE	CONNECTOR	PACKING	PART NUMBER

4 Au PL.

5 SCREW SIZE

QTY

DIMENSION

THIS DRAWING IS A CONTROLLED DOCUMENT.

DIMENSIONS:
単位： 耗
mm

TOLERANCES UNLESS
OTHERWISE SPECIFIED:
一般公差

0 PLC ±

1 PLC ±

2 PLC ±

3 PLC ±

4 PLC ±

ANGLES ±

FINISH
仕上

MATERIAL
材料

DWN
R.MURAYAMA
26SEP2005

CHK
T.KIMURA
26SEP2005

APVD
T.KIMURA
26SEP2005

PRODUCT SPEC
製品規格
108-78180-2

APPLICATION SPEC
取付適用規格

WEIGHT

CUSTOMER DRAWING

TE Connectivity

HDMI 19 POS RECEPTACLE ASSY
SMT SHORT TYPE

SIZE

CAGE CODE

DRAWING NO
番号
A300779C-1903015

RESTRICTED TO
—

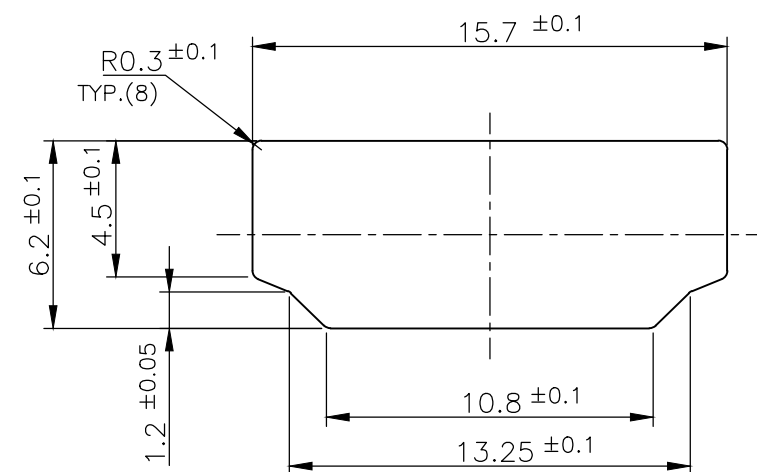
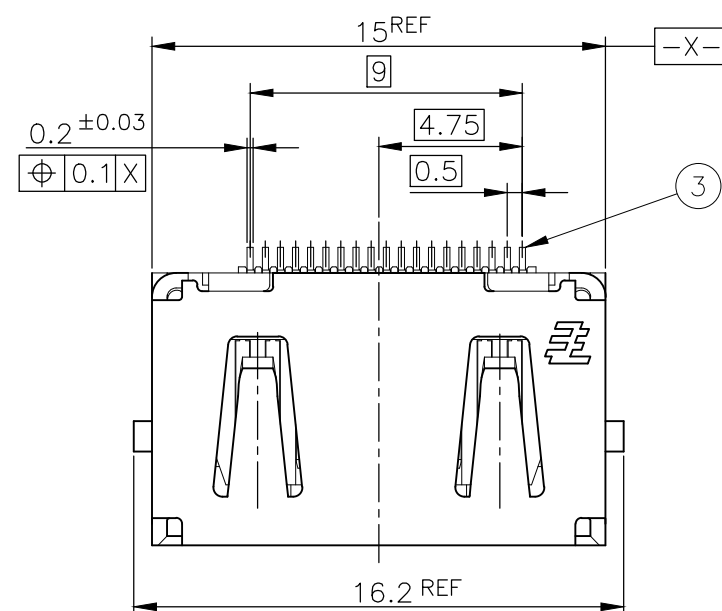
SCALE
尺度 4:1

SHEET
1 OF 12

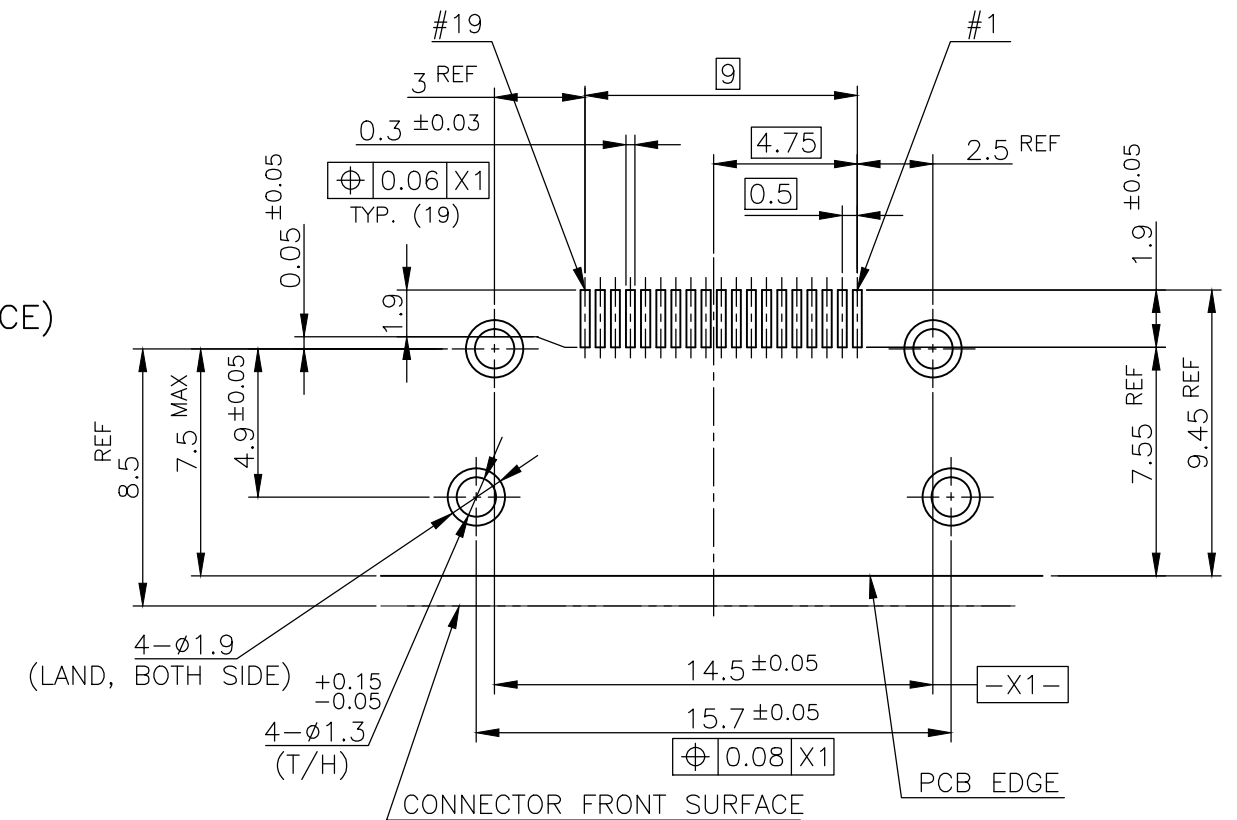
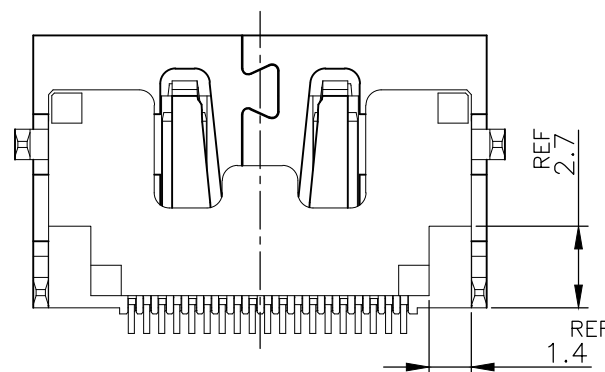
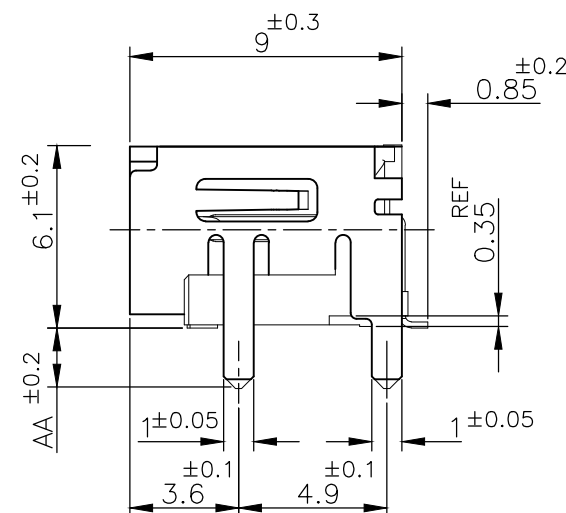
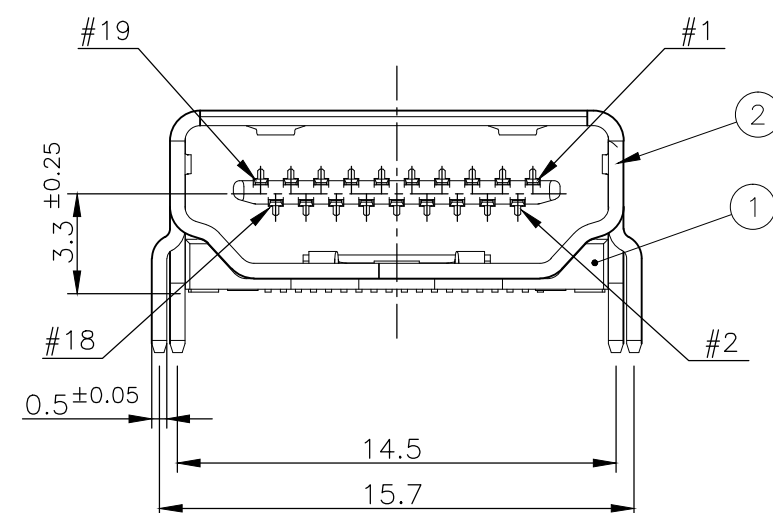
REV
S

1470-19 (3/11)

LOC	DIST	REVISIONS							
—	—	變更							
		P	LTR	DESCRIPTION			DATE	DWN	APVD
			—	SEE SHEET 1			—	—	—




PANEL CUT OUT DIMENSION (REFERENCE)

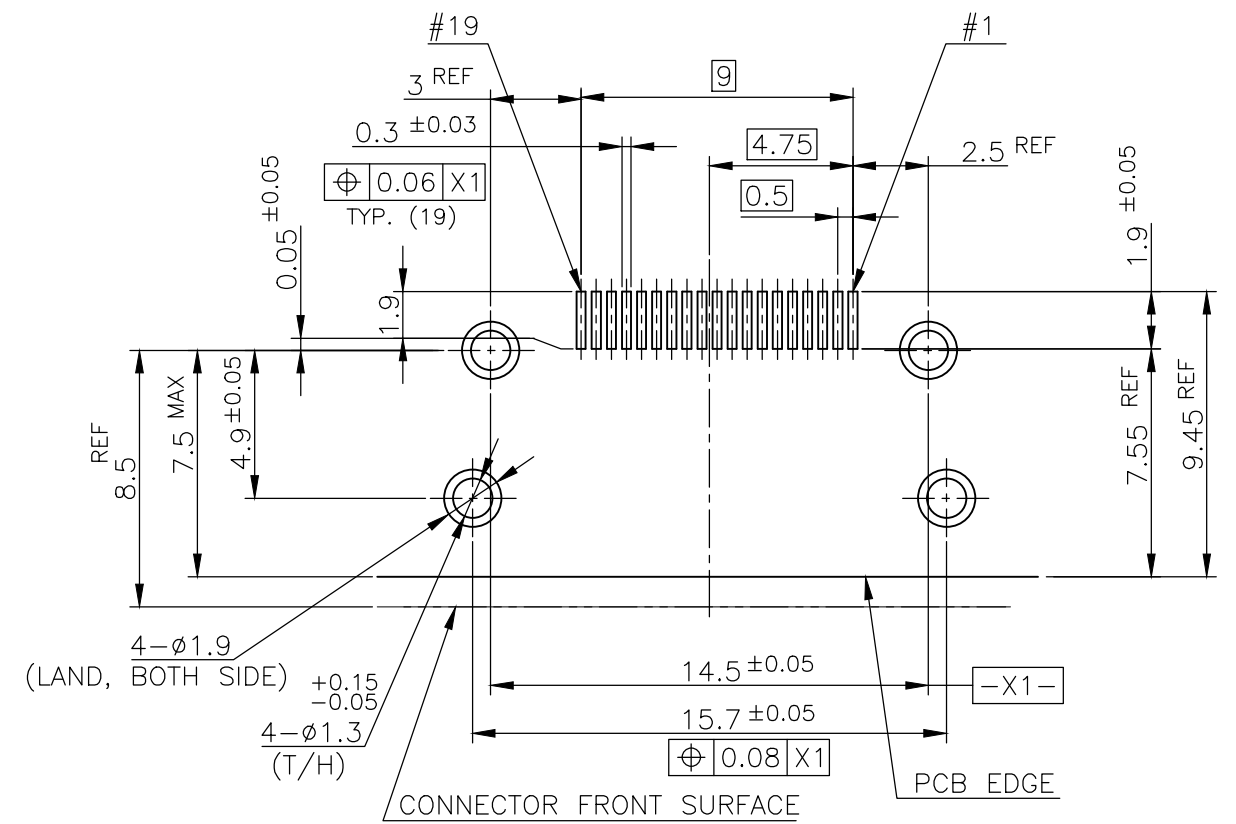


P.C.B LAYOUT (REFERENCE)
SHOWN AS CONNECTOR MOUNTING SIDE
TOLERANCE: NON-CUMULATIVE

BRASS	CONTACT	③
PHOSPHOR BRONZE	SHELL	②
GLASS FILLED LCP UL94V-0, BLACK COLOR	HOUSING	①
MATERIAL	DESCRIPTION	ITEM

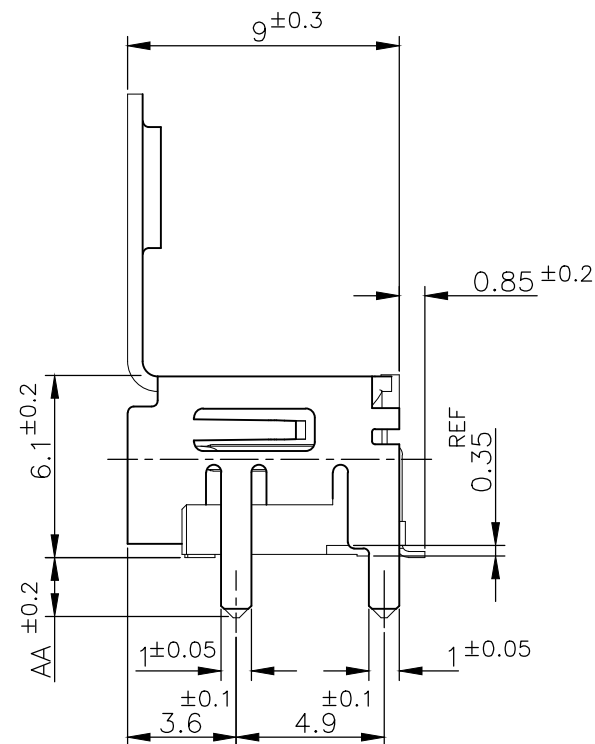
CONNECTOR: WITHOUT FLANGE THROUGH HOLE TYPE

THIS DRAWING IS A CONTROLLED DOCUMENT.		DWN		 TE Connectivity	
DIMENSIONS: 单位: 耗 mm		CHK			
TOLERANCES UNLESS OTHERWISE SPECIFIED: 一般公差		APVD		NAME 名称	
0 PLC ± 1 PLC ± 2 PLC ± 3 PLC ± 4 PLC ± ANGLES ±		PRODUCT SPEC 製品規格		HDMI 19 POS RECEPTACLE ASSY SMT SHORT TYPE	
MATERIAL 材料		APPLICATION SPEC 取付適用規格		SIZE	CAGE CODE
FINISH 仕上		WEIGHT		DRAWING NO 番号	
				A3	00779
				C-1903015	
				RESTRICTED TO —	
CUSTOMER DRAWING				SCALE 尺度	SHEET
				4:1	2 OF 12
				REV	S





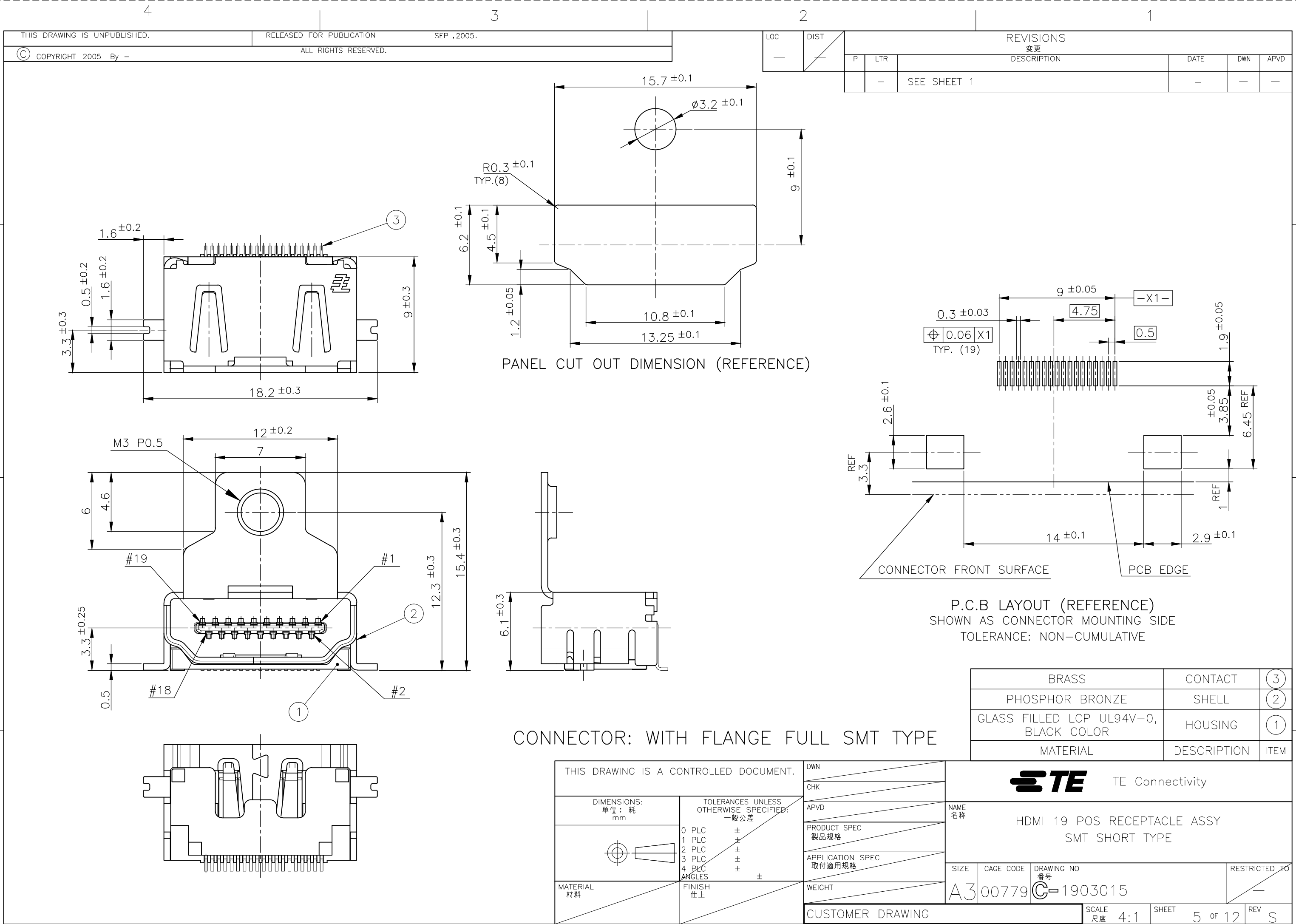
P.C.B LAYOUT (REFERENCE)
SHOWN AS CONNECTOR MOUNTING SIDE
TOLERANCE: NON-CUMULATIVE

POLYIMIDE	TAPE	④
BRASS	CONTACT	③
PHOSPHOR BRONZE	SHELL	②
GLASS FILLED LCP UL94V-0, BLACK COLOR	HOUSING	①
MATERIAL	DESCRIPTION	ITEM



CONNECTOR: WITH FLANGE THROUGH HOLE TYPE

THIS DRAWING IS A CONTROLLED DOCUMENT.		DWN		 TE Connectivity	
		CHK			
DIMENSIONS: 单位: 耗 mm		APVD		NAME 名称 HDMI 19 POS RECEPTACLE ASSY SMT SHORT TYPE	
		PRODUCT SPEC 製品規格			
TOLERANCES UNLESS OTHERWISE SPECIFIED: 一般公差		APPLICATION SPEC 取付適用規格			
0 PLC ± 1 PLC ± 2 PLC ± 3 PLC ± 4 PLC ± ANGLES ±		WEIGHT			
MATERIAL 材料		FINISH 仕上		SIZE A3	
				CAGE CODE 00779	
				DRAWING NO 番号 C-1903015	
				RESTRICTED TO —	
CUSTOMER DRAWING				SCALE 尺度 4:1	
				SHEET 3 OF 12	
				REV S	



4

3

2

1

THIS DRAWING IS UNPUBLISHED.

RELEASED FOR PUBLICATION

SEP ,2005.

© COPYRIGHT 2005 By --

ALL RIGHTS RESERVED.

LOC

DIST

REVISIONS

變更

DESCRIPTION

DATE

DWN

APVD

P

LTR

SEE SHEET 1

1903015-1, 2-1903015-2, 5-1903015-1
5-1903015-5, 7-1903015-1; AS SHOWN5-1903015-3; AS SHOWN
(SCALE 1:1)5-1903015-9; AS SHOWN
(SCALE 1:1)9-1903015-3; AS SHOWN
(SCALE 1:1)

DETAIL A

DETAIL A

DETAIL A

B-B

B-B

B-B

1903015-3; AS SHOWN
(SCALE 1:1)

DETAIL A

B-B



LABEL DESCRIPTION

TYCO P/N: *-1903015-*
QTY: * pcs
D/C:
MADE IN CHINA

THIS DRAWING IS A CONTROLLED DOCUMENT.

DIMENSIONS:
單位: 耗
mmTOLERANCES UNLESS
OTHERWISE SPECIFIED:
一般公差0 PLC ±
1 PLC ±
2 PLC ±
3 PLC ±
4 PLC ±
ANGLES ±MATERIAL
材料FINISH
仕上

DWN

CHK

APVD

PRODUCT SPEC
製品規格APPLICATION SPEC
取付適用規格

WEIGHT

CUSTOMER DRAWING

STE TE ConnectivityNAME
名称HDMI 19 POS RECEPTACLE ASSY
SMT SHORT TYPE

SIZE

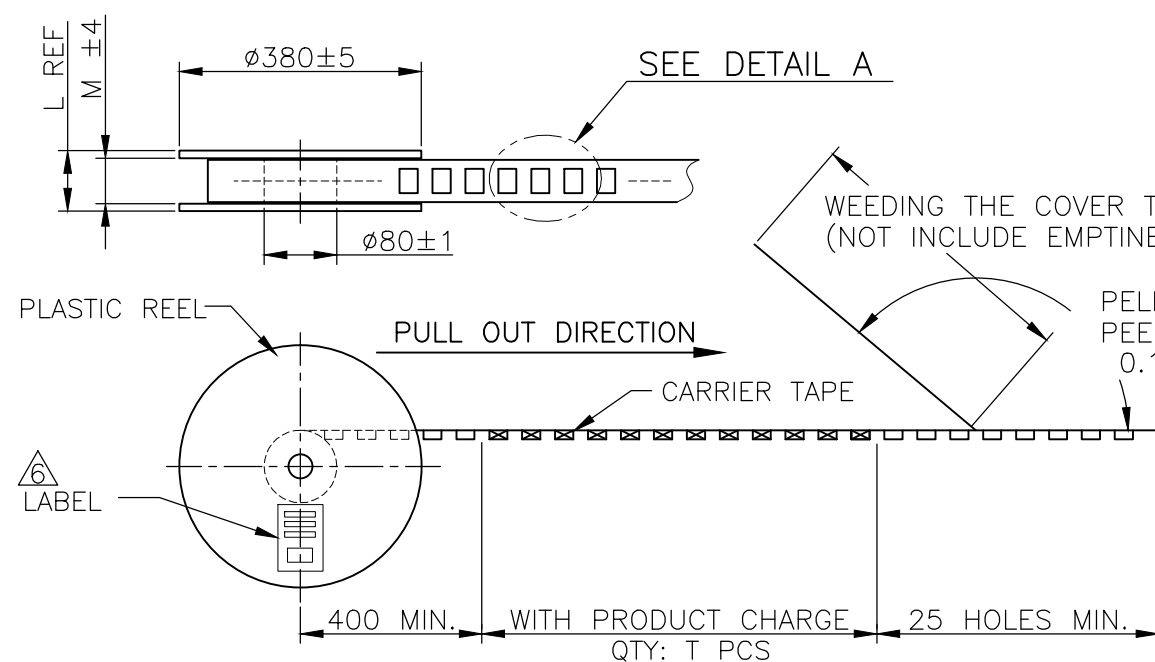
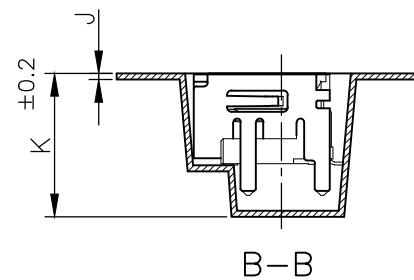
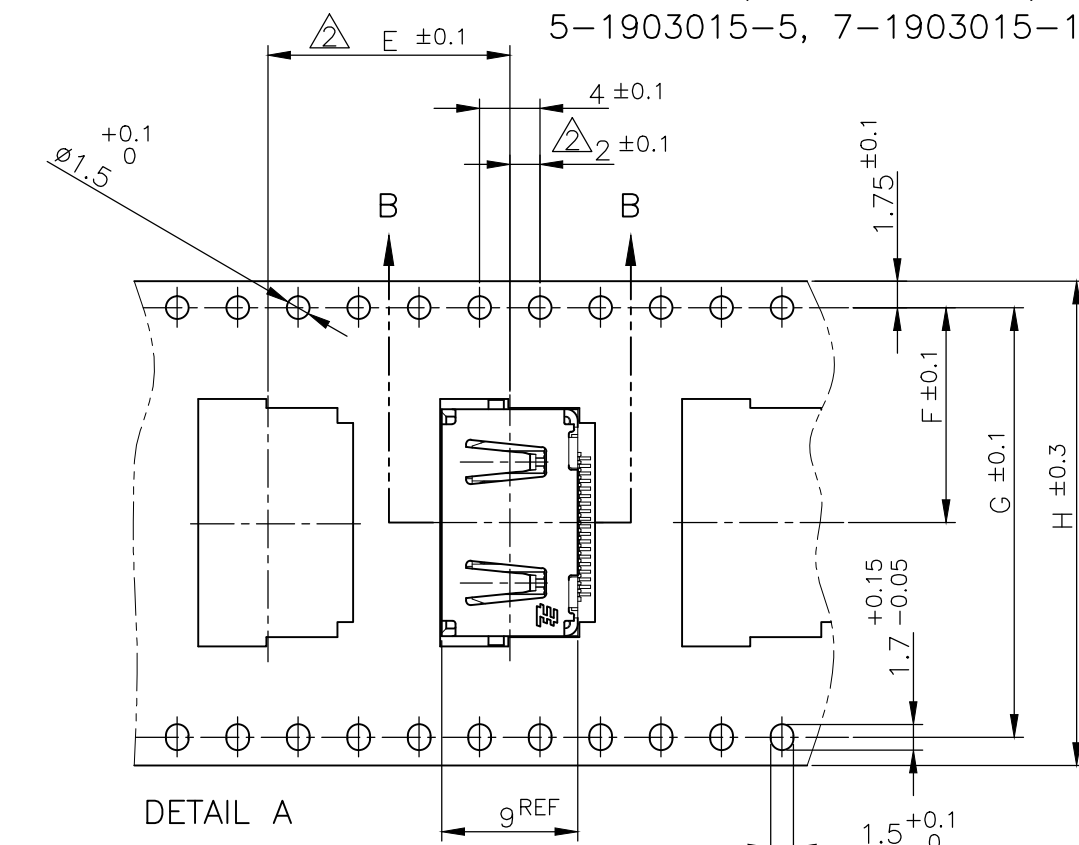
CAGE CODE

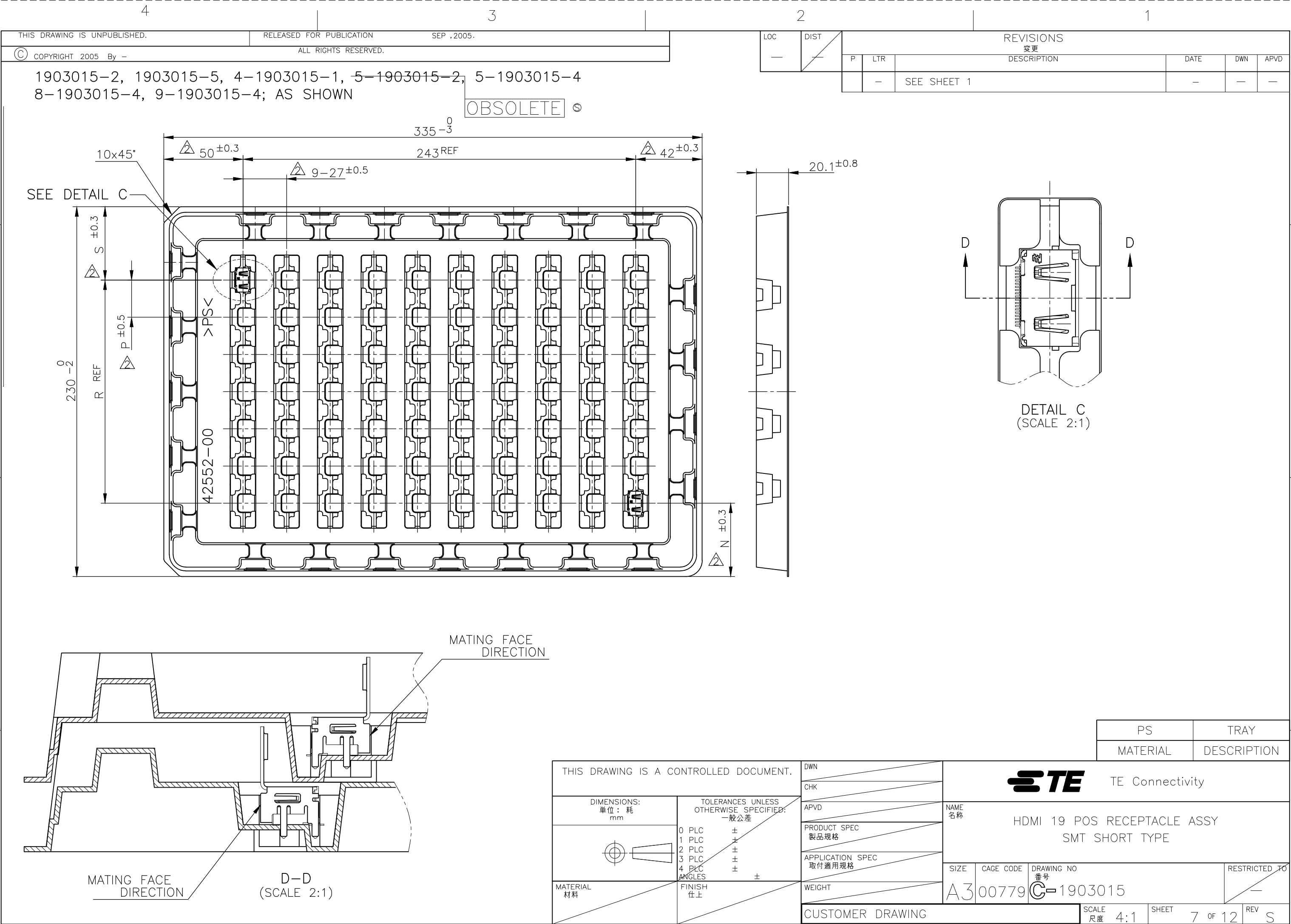
DRAWING NO
番号

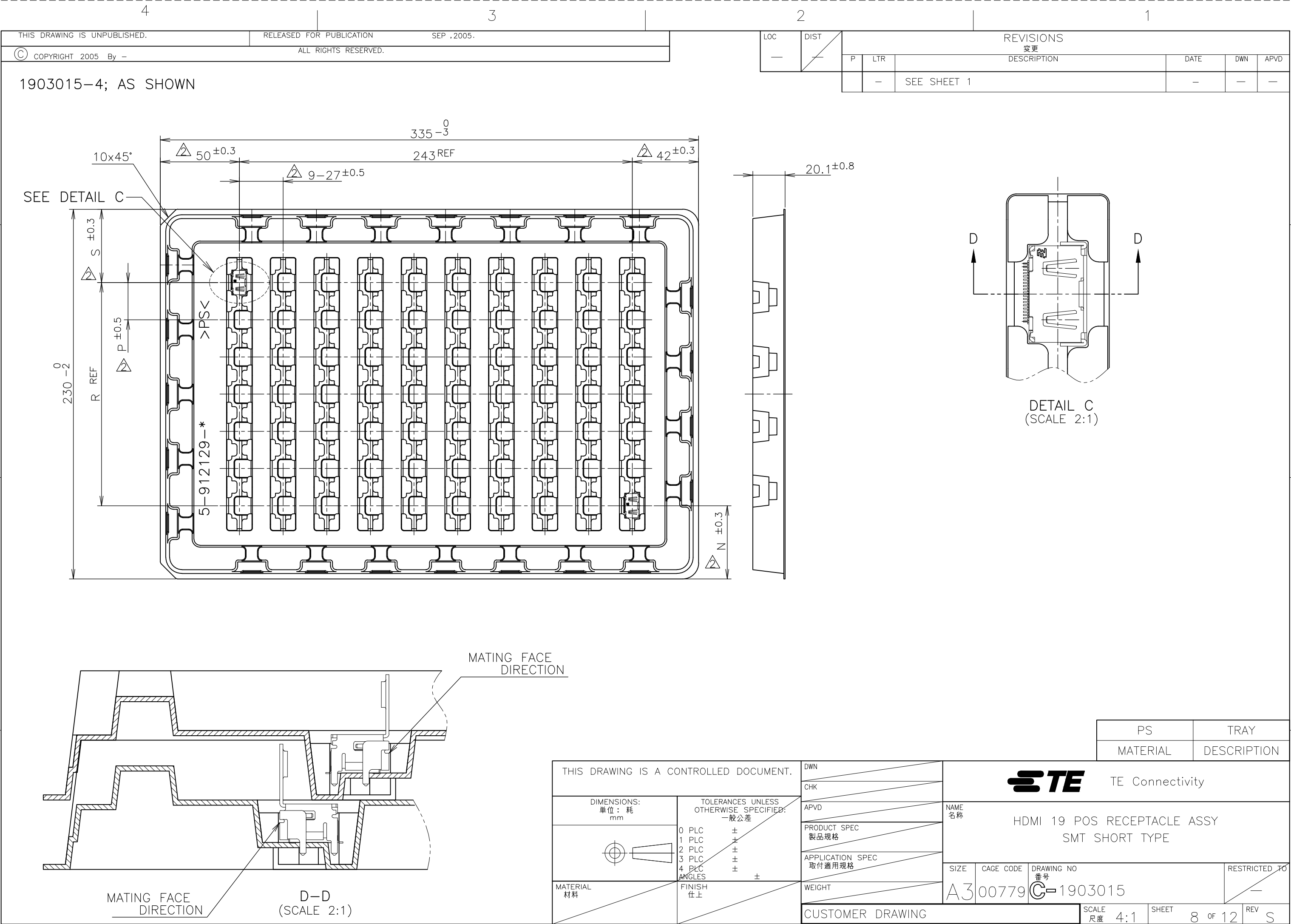
RESTRICTED TO

A300779

C-1903015

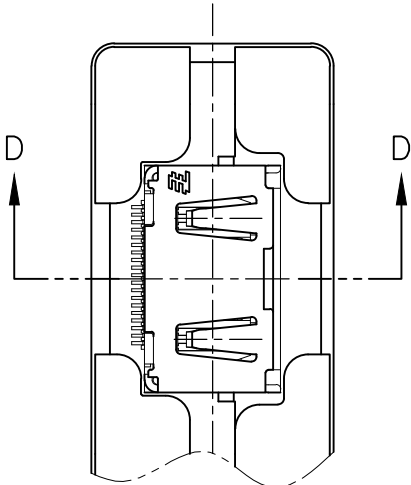
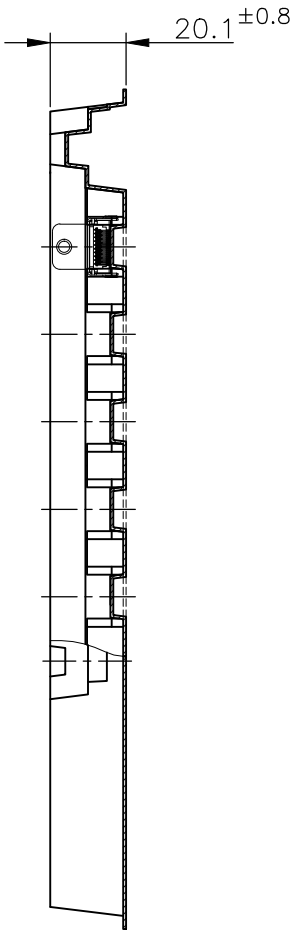
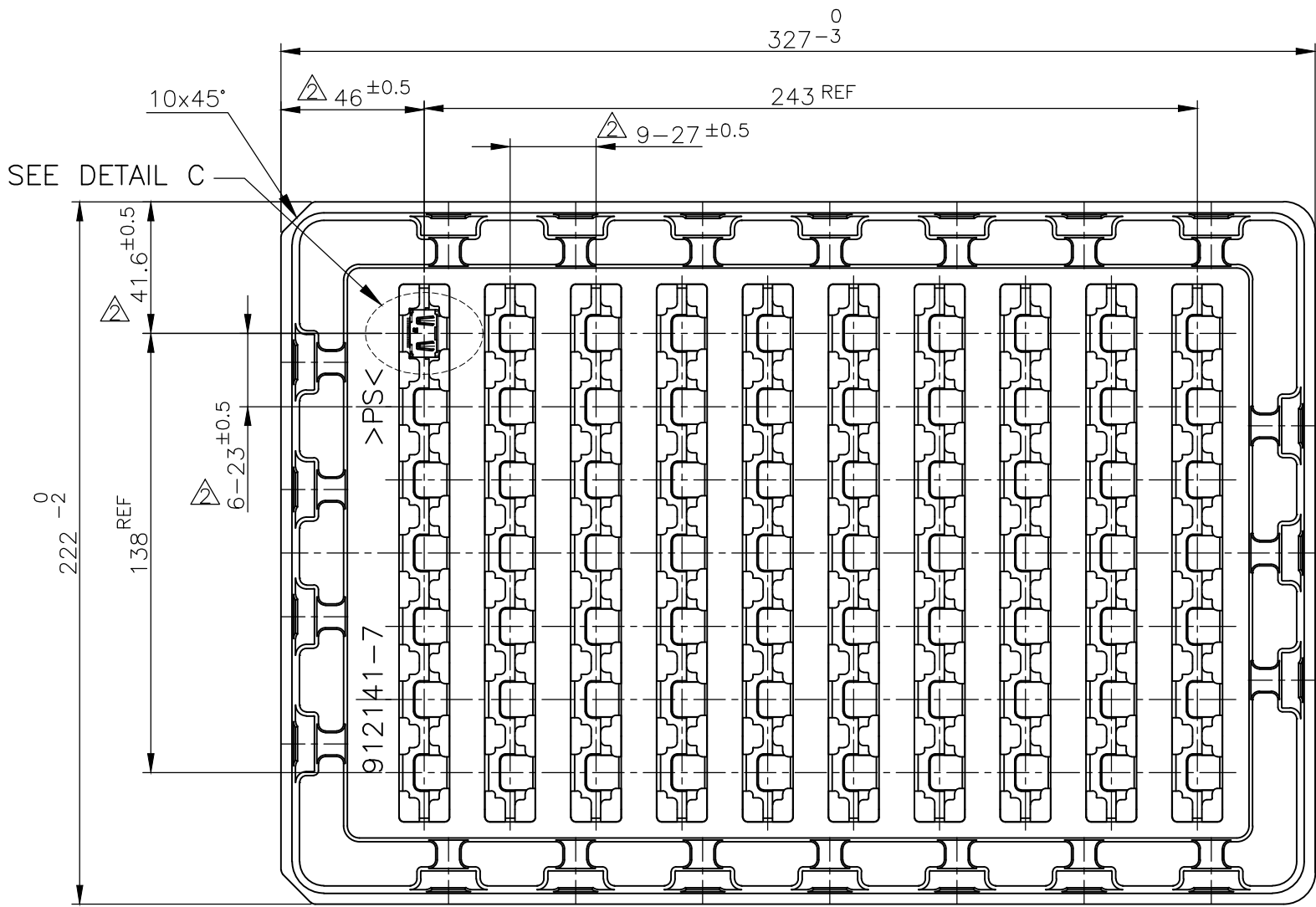
SCALE
尺度 4:1SHEET
6 OF 12REV
SWEEDING THE COVER TAPE: 300 MIN
(NOT INCLUDE EMPTINESS POCKET)PELLING ANGLE: 165°~180°
PEELING STRENGTH:
0.1~0.7N (300mm/min.)



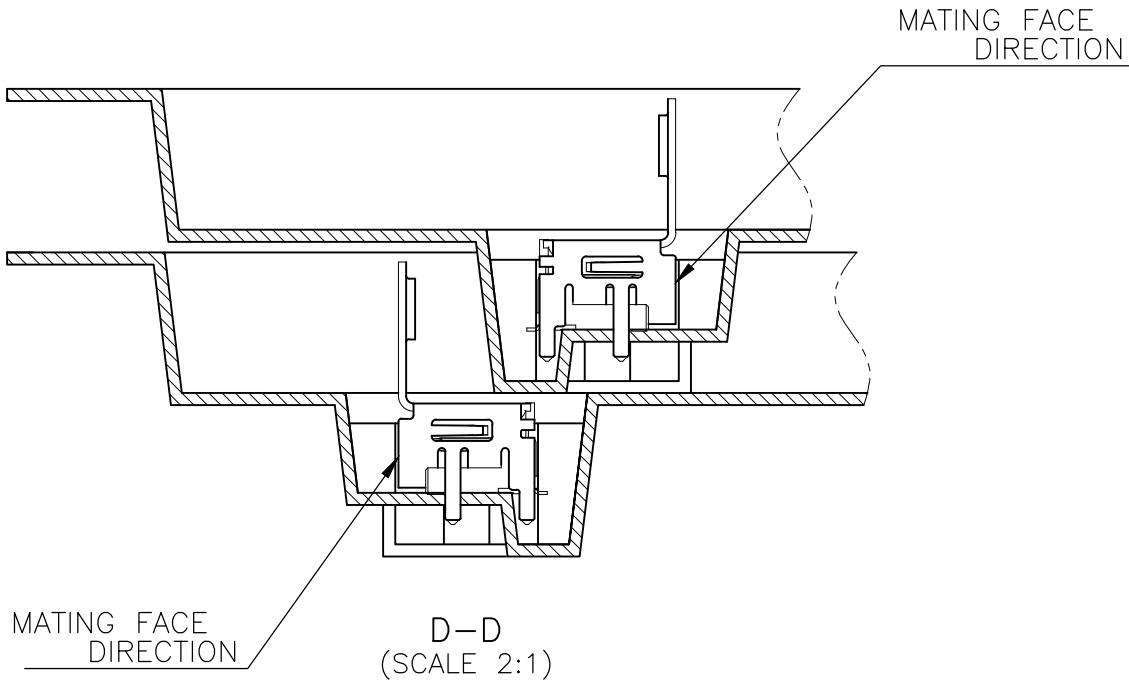



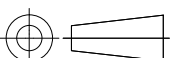
1903015-7, 1903015-8; AS SHOWN

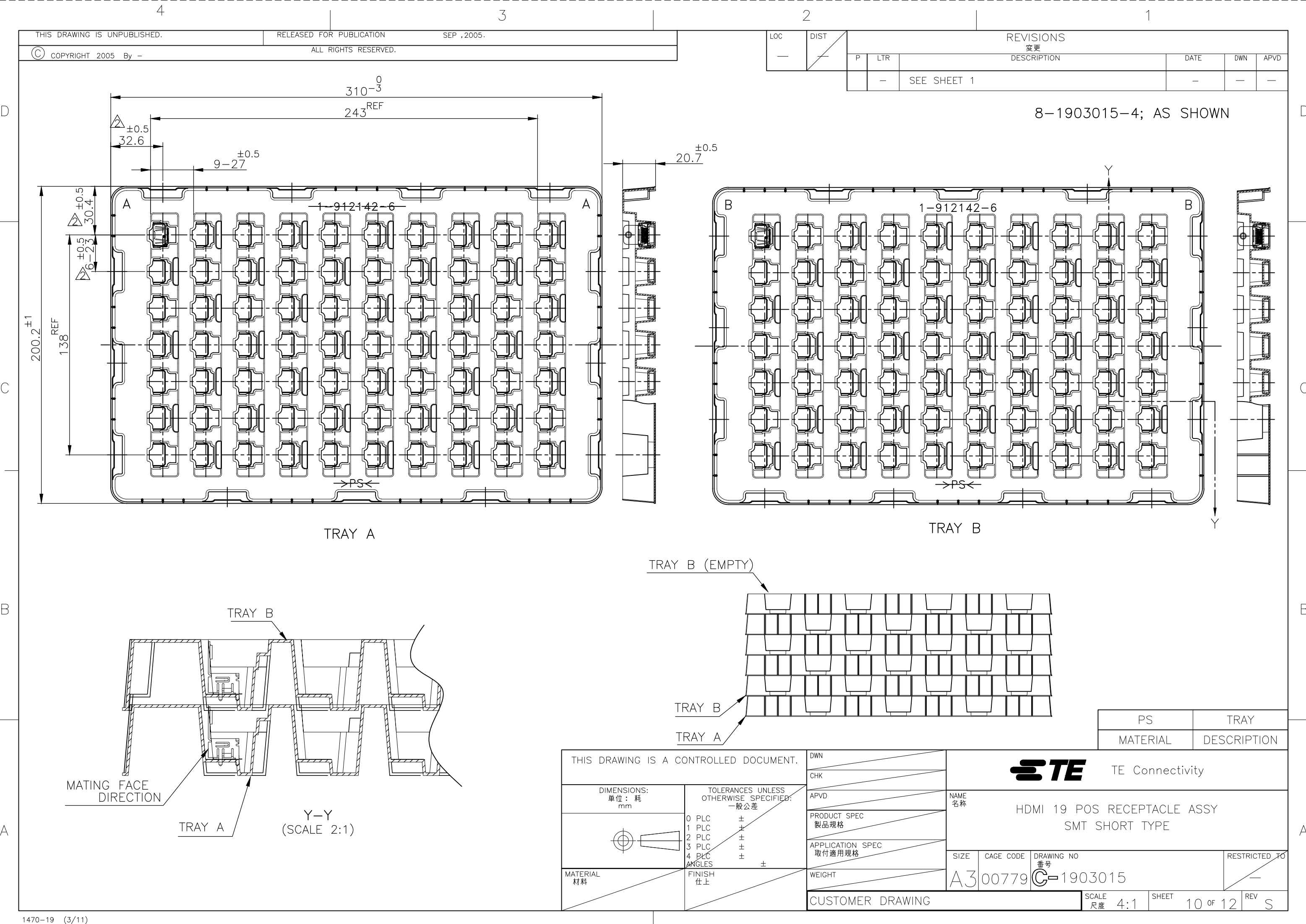
LOC	DIST	REVISIONS				
		P	LTR	DESCRIPTION	DATE	APVD
-	-	-	-	SEE SHEET 1	-	-



DETAIL C
(SCALE 2:1)



THIS DRAWING IS A CONTROLLED DOCUMENT.		DWN		<div> TE Connectivity</div>															
		CHK																	
DIMENSIONS: 単位： 耗 mm		<div>TOLERANCES UNLESS OTHERWISE SPECIFIED: 一般公差</div> <table><tr><td>0 PLC</td><td>±</td></tr><tr><td>1 PLC</td><td>±</td></tr><tr><td>2 PLC</td><td>±</td></tr><tr><td>3 PLC</td><td>±</td></tr><tr><td>4 PLC</td><td>±</td></tr><tr><td>ANGLES</td><td>±</td></tr></table>		0 PLC	±	1 PLC	±	2 PLC	±	3 PLC	±	4 PLC	±	ANGLES	±	NAME 名称		HDMI 19 POS RECEPTACLE ASSY SMT SHORT TYPE	
0 PLC	±																		
1 PLC	±																		
2 PLC	±																		
3 PLC	±																		
4 PLC	±																		
ANGLES	±																		
		APVD																	
		PRODUCT SPEC 製品規格																	
		APPLICATION SPEC 取付適用規格																	
MATERIAL 材料		FINISH 仕上		SIZE		CAGE CODE	DRAWING NO 番号	RESTRICTED TO —											
				A3		00779	C-1903015												
CUSTOMER DRAWING						SCALE 尺度 4:1	SHEET 9 OF 12	REV S											



LOC	DIST	REVISIONS			
		P	LTR	DESCRIPTION	DATE
—	—	—	—	SEE SHEET 1	—

8-1903015-4; AS SHOWN

THIS DRAWING IS A CONTROLLED DOCUMENT.

DIMENSIONS:
単位: 耗
mm

MATERIAL
材料

TOLERANCES UNLESS
OTHERWISE SPECIFIED:
一般公差

0 PLC	±
1 PLC	±
2 PLC	±
3 PLC	±
4 PLC	±
ANGLES	±
FINISH 仕上	

DWN

CHK

APVD

PRODUCT SPEC
製品規格

APPLICATION SPEC
取付適用規格

WEIGHT

CUSTOMER DRAWING

NAME
名称

HDMI 19 POS RECEPTACLE ASSY
SMT SHORT TYPE

SIZE

CAGE CODE

DRAWING NO
番号

RESTRICTED TO

SCALE
尺度

4:1

SHEET

10 OF 12

REV

S

PS

TRAY

MATERIAL

DESCRIPTION

TE Connectivity

A300779

C-1903015

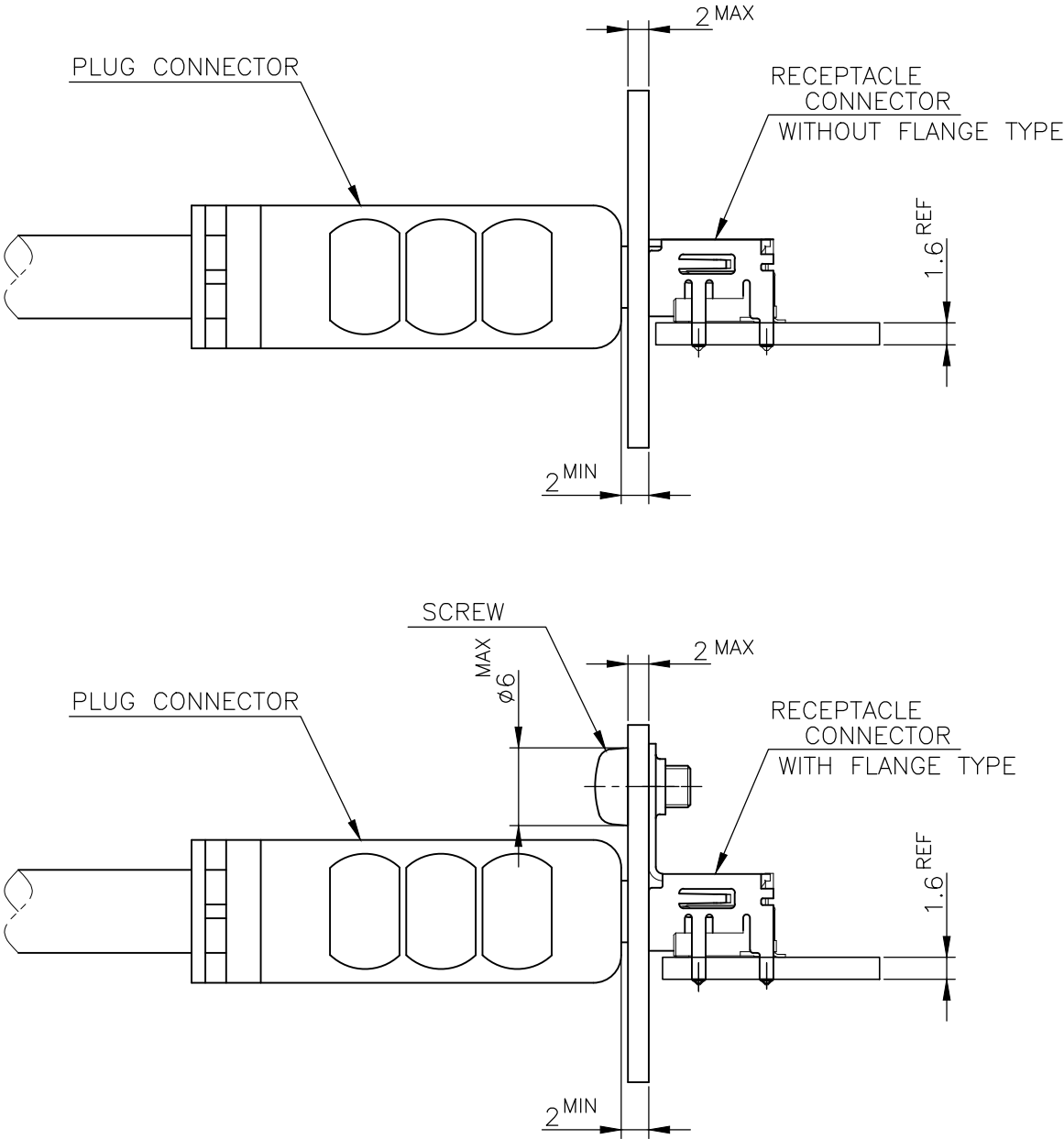
4

3


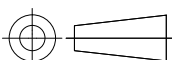
2

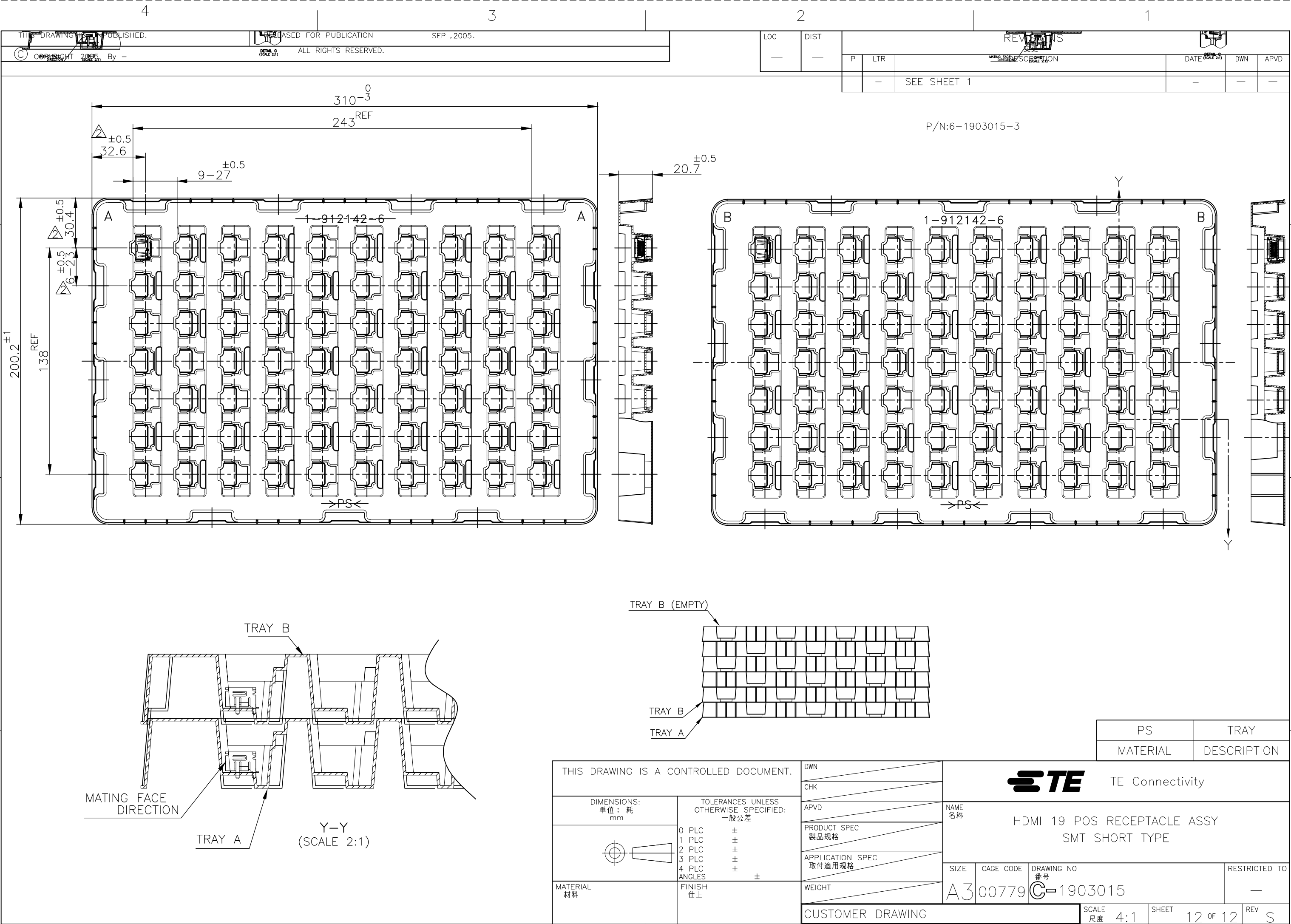
1

LOC	DIST	REVISIONS				
		P	LTR	DESCRIPTION	DATE	APVD
—	—		—	SEE SHEET 1	—	—



MATING CONDITION (REFERENCE)
(SCALE 2:1)

THIS DRAWING IS A CONTROLLED DOCUMENT.		DWN		<div>TE Connectivity</div>			
		CHK					
DIMENSIONS: 単位： 耗 mm		TOLERANCES UNLESS OTHERWISE SPECIFIED: 一般公差		APVD		NAME 名称	
		0 PLC ±		PRODUCT SPEC 製品規格		HDMI 19 POS RECEPTACLE ASSY SMT SHORT TYPE	
		1 PLC ±		APPLICATION SPEC 取付適用規格			
		2 PLC ±					
		3 PLC ±					
		4 PLC ±					
		ANGLES ±					
MATERIAL 材料		FINISH 仕上		WEIGHT		RESTRICTED TO —	
				SIZE		CAGE CODE	
				A3		00779	
				DRAWING NO 番号		C-1903015	
				CUSTOMER DRAWING		SCALE 尺度 4:1	
						SHEET 11 OF 12	
						REV S	



Mouser Electronics

Authorized Distributor

Click to View Pricing, Inventory, Delivery & Lifecycle Information:

[TE Connectivity:](#)

[1903015-7](#)