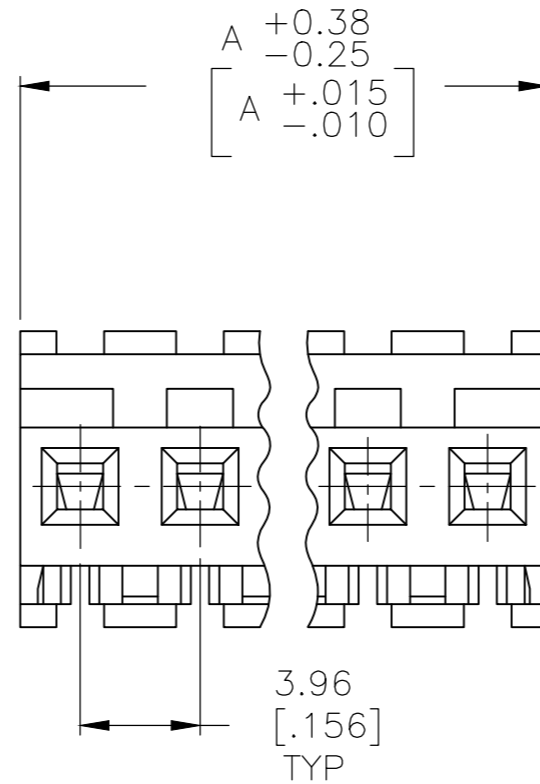
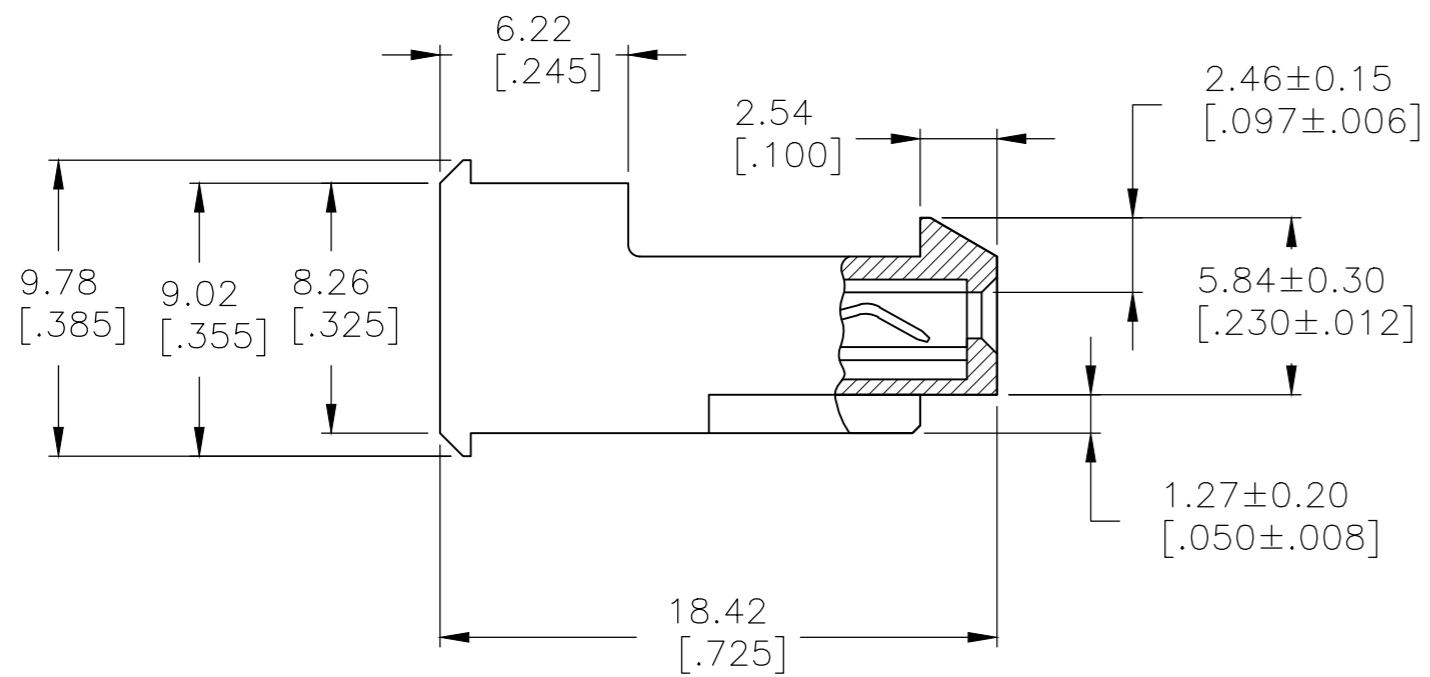
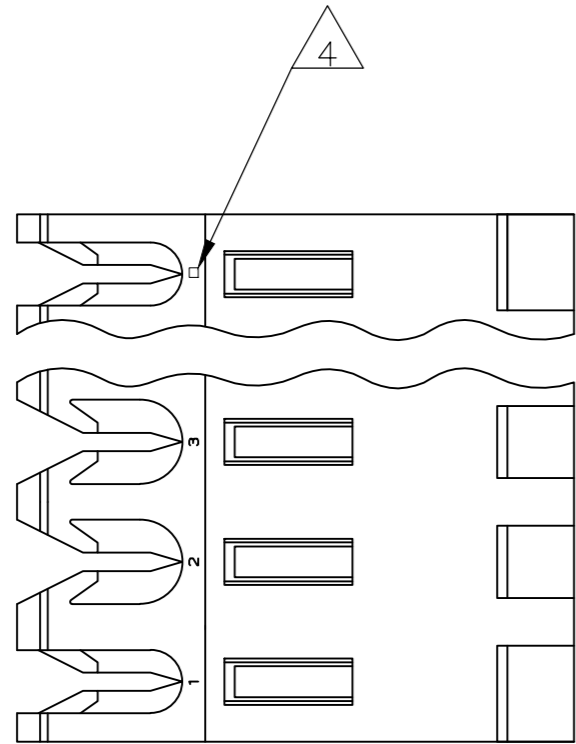


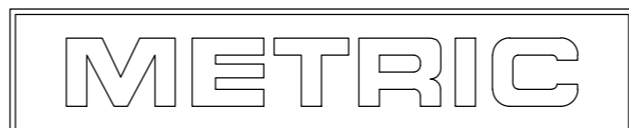
THIS DRAWING IS UNPUBLISHED. RELEASED FOR PUBLICATION  
 © COPYRIGHT - By - TE CONNECTIVITY ALL RIGHTS RESERVED.

LOC	DIST	REVISIONS					
		P	LTR	DESCRIPTION	DATE	DWN	APVD
CM	54	U1		ECO-14-012257	30OCT2014	KR	OC



DIM A	NO OF CIRCUITS	PART NO
95.10 [3.744]	24	5-640601-4
91.14 [3.588]	23	5-640601-3
87.17 [3.432]	22	5-640601-2
83.21 [3.276]	21	5-640601-1
79.25 [3.120]	20	5-640601-0
75.29 [2.964]	19	4-640601-9
71.32 [2.808]	18	4-640601-8
67.36 [2.652]	17	4-640601-7
63.40 [2.496]	16	4-640601-6
59.44 [2.340]	15	4-640601-5
55.47 [2.184]	14	4-640601-4
51.51 [2.028]	13	4-640601-3
47.55 [1.872]	12	4-640601-2
43.59 [1.716]	11	4-640601-1
39.62 [1.560]	10	4-640601-0
35.66 [1.404]	9	3-640601-9
31.70 [1.248]	8	3-640601-8
27.74 [1.092]	7	3-640601-7
23.77 [.936]	6	3-640601-6
19.81 [.780]	5	3-640601-5
15.85 [.624]	4	3-640601-4
11.89 [.468]	3	3-640601-3
7.92 [.312]	2	3-640601-2
<del>95.10 [3.744]</del>	<del>24</del>	<del>2-640601-4</del>
<del>91.14 [3.588]</del>	<del>23</del>	<del>2-640601-3</del>
<del>87.17 [3.432]</del>	<del>22</del>	<del>2-640601-2</del>
<del>83.21 [3.276]</del>	<del>21</del>	<del>2-640601-1</del>
<del>79.25 [3.120]</del>	<del>20</del>	<del>2-640601-0</del>
<del>75.29 [2.964]</del>	<del>19</del>	<del>1-640601-9</del>
<del>71.32 [2.808]</del>	<del>18</del>	<del>1-640601-8</del>
<del>67.36 [2.652]</del>	<del>17</del>	<del>1-640601-7</del>
<del>63.40 [2.496]</del>	<del>16</del>	<del>1-640601-6</del>
<del>59.44 [2.340]</del>	<del>15</del>	<del>1-640601-5</del>
<del>55.47 [2.184]</del>	<del>14</del>	<del>1-640601-4</del>
<del>51.51 [2.028]</del>	<del>13</del>	<del>1-640601-3</del>
<del>47.55 [1.872]</del>	<del>12</del>	<del>1-640601-2</del>
<del>43.59 [1.716]</del>	<del>11</del>	<del>1-640601-1</del>
39.62 [1.560]	10	1-640601-0
35.66 [1.404]	9	640601-9
31.70 [1.248]	8	640601-8
27.74 [1.092]	7	640601-7
23.77 [.936]	6	640601-6
19.81 [.780]	5	640601-5
15.85 [.624]	4	640601-4
11.89 [.468]	3	640601-3
7.92 [.312]	2	640601-2

- 1 MATERIAL: CONNECTOR - NYLON UL94V-2 (RED).  
CONTACTS - 0.30[.012] THICK COPPER ALLOY  
(BRIGHT TIN-LEAD 0.00203[.000080] MIN. THICK FOR CONTACTS 640601-2 THRU 2-640601-4)  
(MATTE WHISKER MITIGATED TIN 0.00203[.000080] MIN THICKNESS OVER NICKEL UNDERPLATE FOR 3-640601-2 THRU 5-640601-4).
- 2 CONTACTS ACCEPT 22 AWG WIRE WITH 2.41[.095] MAX INSULATION DIAMETER.
- 3 CONTACTS MUST ACCEPT 1.14±0.03[.045±.001] SQUARE POST AND REMAIN LOCKED IN POSITION.
- 4 IDENTIFICATION NUMBER FOR LAST CIRCUIT MAY NOT APPEAR ON ALL ASSEMBLIES.
- 5 DIMENSIONS IN BRACKETS ARE IN INCHES.
- 6 HOUSING FEATURES ARE: FEED-THRU WITH LOCKING RAMP.
- 7 OBSOLETE PARTS: OBSOLETE CIS STREAMLINING PER D.RENAUD/D.SINISI



THIS DRAWING IS A CONTROLLED DOCUMENT.

DIMENSIONS: mm [INCHES]	TOLERANCES UNLESS OTHERWISE SPECIFIED: 0 PLC ± - 1 PLC ± - 2 PLC ± - 3 PLC ± - 4 PLC ± - ANGLES ± -	DWN B. LEWIS 12 FEB 91 CHK R. SWING 12 FEB 91 APVD D. CLARK 19 FEB 91	NAME MTA-156 CONNECTOR ASSEMBLY, 22 AWG, STANDARD
MATERIAL 1	FINISH 1	PRODUCT SPEC 108-1051 APPLICATION SPEC 114-1020	SIZE A2 CAGE CODE 00779 DRAWING NO C-640601 RESTRICTED TO -
CUSTOMER DRAWING		WEIGHT -	SCALE 4:1 SHEET 1 OF 1 REV U1

# Mouser Electronics

Authorized Distributor

Click to View Pricing, Inventory, Delivery & Lifecycle Information:

[TE Connectivity:](#)

[3-640601-4](#)