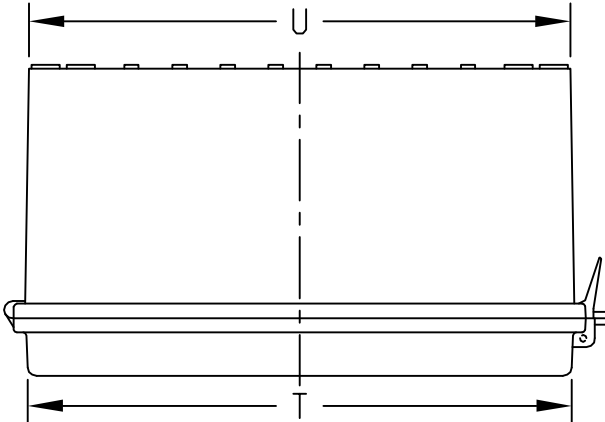
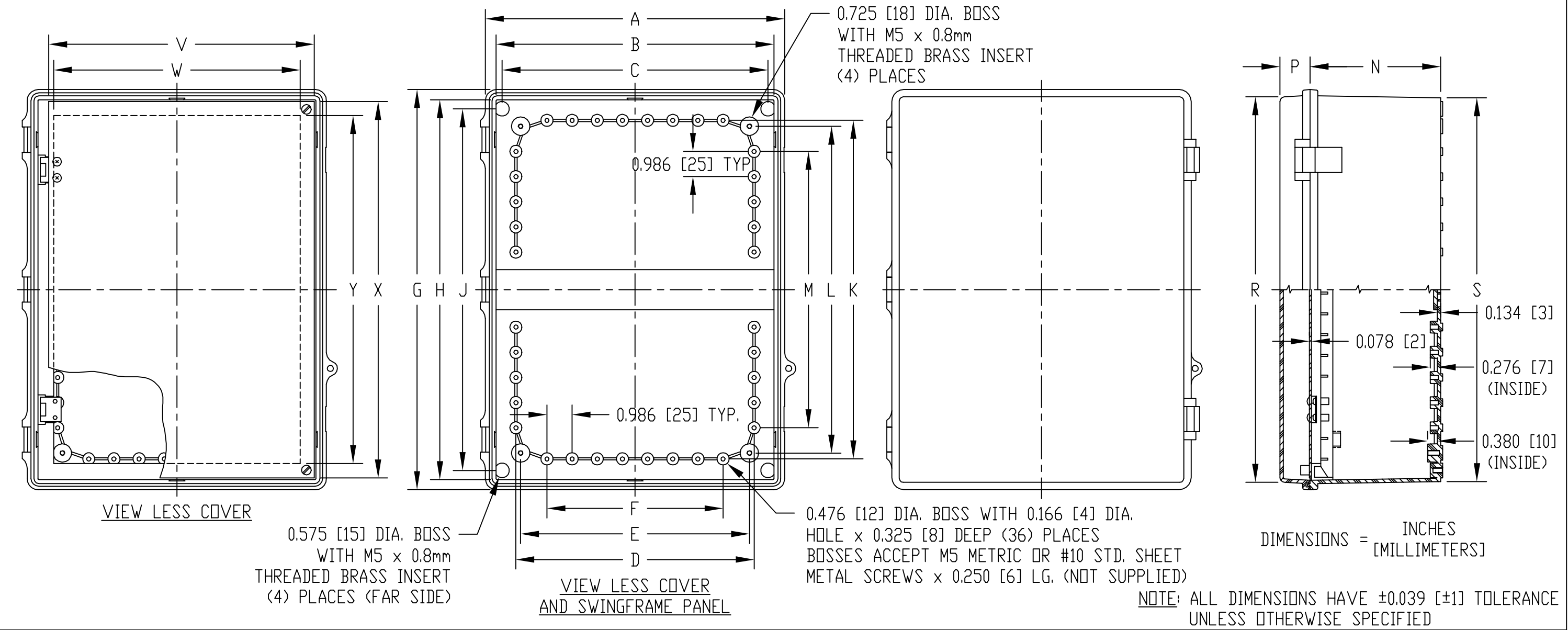


PART NAME	NON-METALLIC ENCLOSURE (STYLE E)	PART No.	NBE-10547 AND NBE-10567
------------------	---	-----------------	--------------------------------

<p>MATERIAL:</p> <p>SOLID BODY & COVER _____ ABS/PC BLENDED PLASTIC UL94-5VB FLAMMABILITY RATING</p> <p>CLEAR COVER _____ POLYCARBONATE PLASTIC UL94V-0 FLAMMABILITY RATING UV STABILIZED</p> <p>PANEL _____ 0.078 THICK ALUMINUM</p> <p>LATCHES & HINGES _____ NON-METALLIC</p> <p>WALL MOUNTING BRACKETS _____ STAINLESS STEEL</p>	<p>FINISH:</p> <p>BODY _____ LIGHT GRAY</p> <p>COVER _____ LIGHT GRAY OR CLEAR</p> <p>PANEL _____ ANODIZED</p> <p>COVER INCLUDES GRAY POLY-URETHANE GASKET.</p> <p>UNIT COMES COMPLETE WITH (4) WALL MOUNTING BRKTS. & (4) M5 x 10mm LG. TRUSS HD. MACHINE SCREWS (NOT SHOWN)</p>		<p>INDUSTRY STANDARDS:</p> <p>UL508 TYPE 1, 2, 4, 4X INDOOR, 12 & 13</p> <p>NEMA TYPE 1, 2, 4, 4X, 12 & 13</p> <p>IEC529-IP65</p> <p>AIR AND MOISTURE VENTS, GALVANIZED STEEL INTERNAL PANEL AND STAINLESS STEEL LOCKING HASP ARE NOT INCLUDED, BUT CAN BE PURCHASED SEPARATELY.</p>
---	--	---	---



PART NO.		DIMENSIONS																					
SOLID COVER	CLEAR COVER	A	B	C	D	E	F	G	H	J	K	L	M	N	P	R	S	T	U	V	W	X	Y
NBE-10547	NBE-10567	11.727	10.894	10.424	9.335	8.969	6.902	15.680	14.877	14.167	13.265	12.801	10.828	5.110	1.185	15.105	15.035	11.147	11.090	10.400	9.659	14.740	13.635
		[298]	[277]	[265]	[237]	[228]	[175]	[398]	[378]	[360]	[337]	[325]	[275]	[130]	[30]	[384]	[382]	[283]	[282]	[264]	[245]	[374]	[346]

Mouser Electronics

Authorized Distributor

Click to View Pricing, Inventory, Delivery & Lifecycle Information:

[Bud Industries:](#)

[NBE-10567](#) [NBE-10547](#)