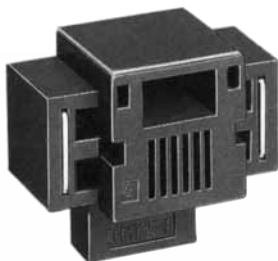
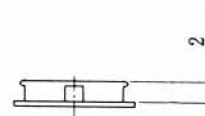
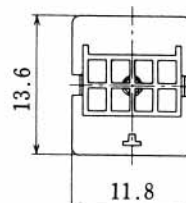
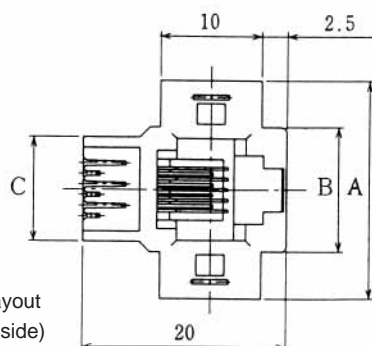
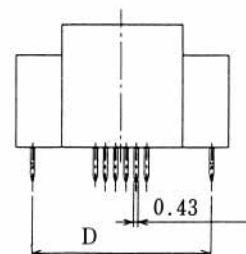
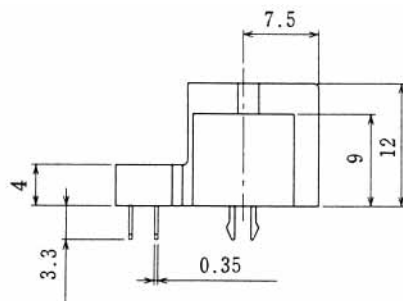


## CL 222 TM

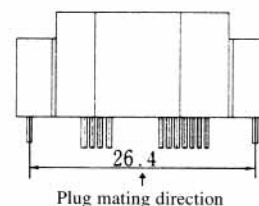
## TM13R- \* \*( 50 )

[illegible]

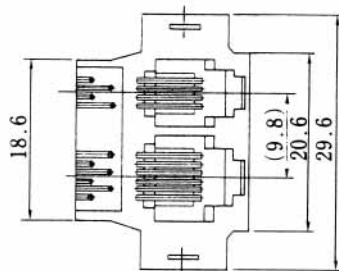
PCB mounting hole layout  
(Connector mounting side)



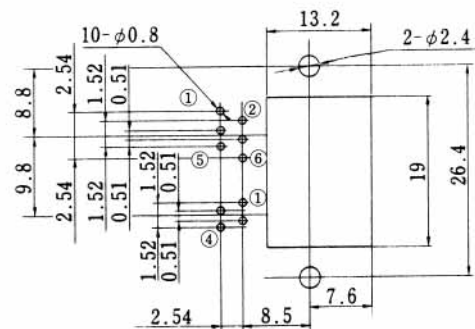
Technical drawing of the plug and housing assembly. The drawing shows a cross-section of the plug (left) and housing (right) with various dimensions. The plug has a diameter of 20 mm and a length of 13 mm. The housing has an outer diameter of 12 mm and an inner diameter of 9 mm. The plug is inserted into the housing, and the mating direction is indicated by an arrow pointing to the right. Dimensions include 4, 3, 3, 20, 13, 12, 9, 10, 3, and a hole diameter of 0.45 mm.



Plug mating direction



PCB mounting hole layout  
(Connector mounting side)



TM13R-10 \* \*(50)

# Mouser Electronics

Authorized Distributor

Click to View Pricing, Inventory, Delivery & Lifecycle Information:

[Hirose Electric:](#)

[TM13R-1006\(50\)](#) [TM13RA-1006\(50\)](#) [TM13R-64\(50\)](#) [TM13R-44\(50\)](#) [TM13R-62\(50\)](#) [TM13R-66\(50\)](#)