

FLEX STACK

(2.54 mm) .100"

HW-14-08-G-S-300-100

ZW-06-13-L-D-787-118

DW-11-20-T-D-825

DW, EW, ZW, HW-TH SERIES

FLEXIBLE .025" SQ BOARD STACKERS

Mates with:

SSW, SSQ, ESW, ESQ,
CES, SLW, BSW, BCS,
SSM, HLE, PHF

Cable Mates:

IDSS, IDSD

SPECIFICATIONS

For complete specifications
see www.samtec.com?DW,
www.samtec.com?EW,
www.samtec.com?ZW or
www.samtec.com?HW-TH

Insulator Material:

DW, EW, ZW: Black Glass
Filled Polyester

HW: Natural Liquid

Crystal Polymer

Terminal Material:

Phosphor Bronze

Plating:

Au or Sn over

50 μ " (1.27 μ m) Ni

Operating Temp Range:

-55 °C to +125 °C with Gold

-55 °C to +105 °C with Tin

RoHS Compliant:

Yes

Lead-Free Solderable:

DW, EW, ZW:

No, Lead Wave Only

HW: Yes

RECOGNITIONS

For complete scope of
recognitions see
www.samtec.com/quality



ALSO AVAILABLE (MOQ Required)

- Other platings

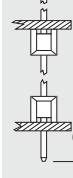
Notes:

For added mechanical stability,
Samtec recommends
mechanical board spacers be
used in applications with gold or
selective gold plated connectors.
Contact ipg@samtec.com for
more information.

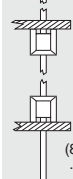
This Series is non-standard,
non-returnable.

TYPE STRIP

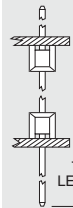
DW
= (2.79 mm)
.110" Tail



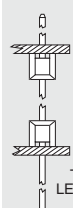
EW
= (8.38 mm)
.330" Tail



ZW
= Custom Tail



HW
= High Temp
Custom Tail



NO. PINS PER ROW

LEAD STYLE

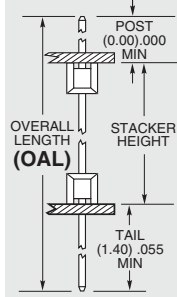
PLATING OPTION

ROW OPTION

STACKER HEIGHT

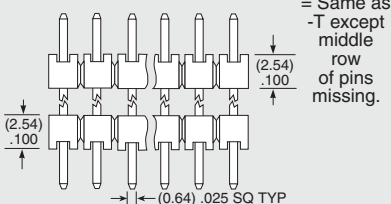
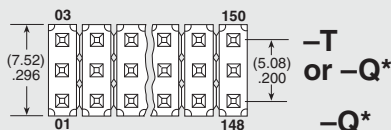
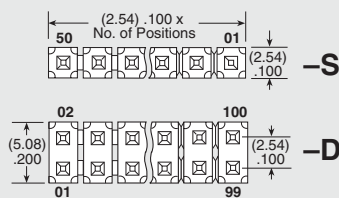
OTHER OPTIONS

Specify LEAD STYLE from chart



LEAD STYLE	OAL
-07	(10.92) .430
-08	(13.46) .530
-09	(18.54) .730
-10	(21.08) .830
-11	(23.62) .930
-12	(26.16) 1.030
-13	(31.24) 1.230
-14	(36.32) 1.430
-15	(16.00) .630
-16	(11.30) .445
-17	(12.19) .480
-19	(33.78) 1.330
-20	(28.70) 1.130

01 thru 50



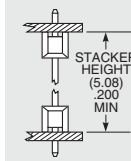
-S
= Single
Row

-D
= Double
Row

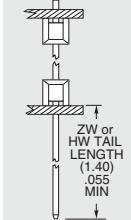
-T
= Triple
Row

-Q
= Double
Row .200"
(5.08 mm)
row space

-“XXX”
= Stacker
Height
(in inches)
(5.08 mm)
.200"
minimum
Example:
-250
= (6.35 mm)
.250"



-“XXX”
= ZW or HW
Tail Length
(in inches)
(1.40 mm)
.055"
minimum
Example:
-250
= (6.35 mm)
.250"



-F
= Gold flash on contact,
Matte Tin on tail

-L
= 10 μ " (0.25 μ m)
Gold on contact area
of longer tail,
Matte Tin on tail

-G
= 10 μ " (0.25 μ m)
Gold on contact area
of longer tail,
Gold flash on balance

-T
= Matte Tin

-LL
= Locking
Lead
(Shortest
dimension
between the
tail and the
post is the
end that will
be crimped.
Available
on tails from
(2.29 mm)
.090" to
(7.87 mm)
.310" only.)
Single row, 01
& 02 positions
& -Q row not
available

-“XXX”
= Polarized
Specify omitted
pin position

Due to technical progress, all designs, specifications and components are subject to change without notice.

WWW.SAMTEC.COM

All parts within this catalog are built to Samtec's specifications.

Customer specific requirements must be approved by Samtec and identified in a Samtec customer-specific drawing to apply.

Mouser Electronics

Authorized Distributor

Click to View Pricing, Inventory, Delivery & Lifecycle Information:

[Samtec:](#)

[ZW-02-11-T-S-541-200](#)